

INSTALLATION INSTRUCTIONS

Ram 2500 Pre Runner Bull Bar Installation Procedure

NOTE: FAILURE TO INSTALL THIS PRODUCT AS SPECIFIED IN THE INSTALLATION PROCEDURE WILL VOID ALL WARRANTY. IF ANY PARTS HAVE ARRIVED DAMAGED OR WERE NOT SUPPLIED IN THE KIT, PLEASE TAKE PHOTOS AND THEN PROCEED TO CONTACT YOUR SUPPLIER.

IN THE BOX

- Ram 2500 Pre Runner Bull Bar
- Chassis mounted winch cradle
- 2 x Inner guard mounting brackets
- 1 x Bolt kit
- 2 x Indicator/parker lights
- 2 x Spotlights
- 2 x Floodlights
- 2 x Sensor patch harness looms
- 1 x Spotlight loom (still in production)
- 2 x Headlight patch harness looms (still in production)

TOOLS REQUIRED

- Ratchet/electric ratchet
- Breaker bar/rattle gun
- Various sized sockets
- Various sized spanners
- Drill/drill bits
- Air Saw
- Stanley Knife
- Clip removal tool
- Ruler and marker pen
- Qualified auto electrician recommended
- Second person to help install the bar



**OVERLANDING
THE AUSSIE WAY**



NOTE: FAILURE TO INSTALL THIS PRODUCT AS SPECIFIED IN THE INSTALLATION PROCEDURE WILL VOID ALL WARRANTY. IF ANY PARTS HAVE ARRIVED DAMAGED OR WERE NOT SUPPLIED IN THE KIT, PLEASE TAKE PHOTOS AND THEN PROCEED TO CONTACT YOUR SUPPLIER.

NOTE: A QUALIFIED AUTO ELECTRICIAN IS NEEDED TO WIRE THE INDICATOR/PARKER LIGHTS AS WELL AS THE SPOT/FLOOD BEAM LIGHTS.

1

1.1

Start by parking the car on flat level ground with the handbrake on, then remove the number plate and set aside for later fitment.

Refer Image 1.



Image 1

1.2

Remove the bolts securing the inner guard to the bumper on both sides of the vehicle.

Refer Image 2.



Image 2

2

2.1

Identify the front tow hooks and where they bolt to behind the bumper.

Refer Image 3.



Image 3

2.2

Line up the edge of the fuse panel bracket with the line marked in the previous step and mark out the mounting holes.

Refer Image 4 and 5.



Image 4

2.3

Discard the tow hooks removed in the previous step as they are not used.



Image 5

NOTE: FAILURE TO INSTALL THIS PRODUCT AS SPECIFIED IN THE INSTALLATION PROCEDURE WILL VOID ALL WARRANTY. IF ANY PARTS HAVE ARRIVED DAMAGED OR WERE NOT SUPPLIED IN THE KIT, PLEASE TAKE PHOTOS AND THEN PROCEED TO CONTACT YOUR SUPPLIER.

3

3.1

Remove the 2 black bolts securing the bumper to the chassis on both sides of the vehicle (keep these bolts and nuts for later fitment)

Refer Image 6 and 7.



Image 6



Image 7

3.2

Disconnect the sensor harness plug on the LHS and start pulling the bumper forward slowly, as it's being removed to unclip the wiring harness which is attached, set the bumper aside.

Refer Image 8 and 9.



Image 8

3.3.

Once the harness is fully removed from the bumper, cable tie it up and out of the way as it does not get used (it's an engine pre-heater used in the USA for winter).



Image 9

NOTE: FAILURE TO INSTALL THIS PRODUCT AS SPECIFIED IN THE INSTALLATION PROCEDURE WILL VOID ALL WARRANTY. IF ANY PARTS HAVE ARRIVED DAMAGED OR WERE NOT SUPPLIED IN THE KIT, PLEASE TAKE PHOTOS AND THEN PROCEED TO CONTACT YOUR SUPPLIER.

4

Remove and discard the snow plough brackets (if the vehicle has them) and keep the bolts and nuts for later fitment.

Refer Image 10 and 11.



Image 10



Image 11

5

5.1

Remove the 4 bolts securing the intercooler wind deflector (2 each side).

Refer Image 12 and 13.



Image 12



Image 13

NOTE: FAILURE TO INSTALL THIS PRODUCT AS SPECIFIED IN THE INSTALLATION PROCEDURE WILL VOID ALL WARRANTY. IF ANY PARTS HAVE ARRIVED DAMAGED OR WERE NOT SUPPLIED IN THE KIT, PLEASE TAKE PHOTOS AND THEN PROCEED TO CONTACT YOUR SUPPLIER.

5.2

Next remove all the clips securing the wind deflector on the bottom of the intercooler, remove the wind deflector and discard.

Refer Image 14 and 15.



Image 14



Image 15

6.1

Next remove all the clips securing the wind deflector on the bottom of the intercooler, remove the wind deflector and discard.

Refer Image 16.



Image 16

6.2

With the help of a friend, lift the cradle into place and secure the front 2 chassis holes with the black bumper bolts removed in step 3.

Refer Image 17.



Image 17

6

NOTE: FAILURE TO INSTALL THIS PRODUCT AS SPECIFIED IN THE INSTALLATION PROCEDURE WILL VOID ALL WARRANTY. IF ANY PARTS HAVE ARRIVED DAMAGED OR WERE NOT SUPPLIED IN THE KIT, PLEASE TAKE PHOTOS AND THEN PROCEED TO CONTACT YOUR SUPPLIER.

6.3

Secure the rear 3 chassis holes with the 2 grey bolts removed in step 3 and 1 of the black snow plough bolts from step 4 (2 grey bolts in the bottom holes and black bolt in the top). Tighten all bolts and mark with a paint pen.

Refer Image 18.



Image 18

7.1

Using a clip removal tool, proceed to remove the OEM wiring loom from the OEM bumper removed in step 3, take note of orientation .

Refer Image 19 and 20.



Image 19



Image 20



7.2

Carefully unclip and remove each sensor from the sensor bezels and take note of the order and orientation for installation on the bar.

Refer Image 21 and 22.

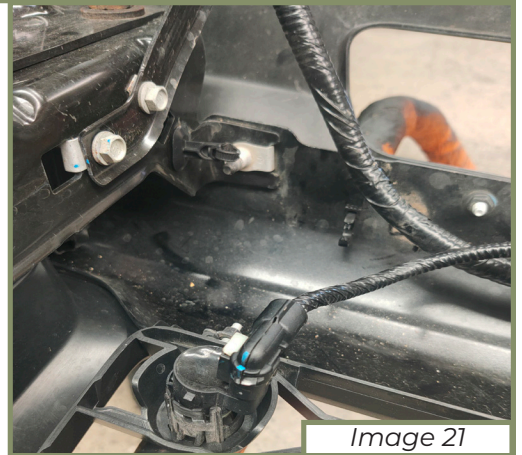


Image 21



Image 22

7.3

Carefully unclip and remove the sensor bezels from the bumper and take note of the order and orientation for installation on the bar.

Refer Image 23 and 24.



Image 23



Image 24

NOTE: FAILURE TO INSTALL THIS PRODUCT AS SPECIFIED IN THE INSTALLATION PROCEDURE WILL VOID ALL WARRANTY. IF ANY PARTS HAVE ARRIVED DAMAGED OR WERE NOT SUPPLIED IN THE KIT, PLEASE TAKE PHOTOS AND THEN PROCEED TO CONTACT YOUR SUPPLIER.

8

8.1

Install all the sensor mounting clips into the bar in the same order and orientation as they were in the bumper. *Refer Image 25.*

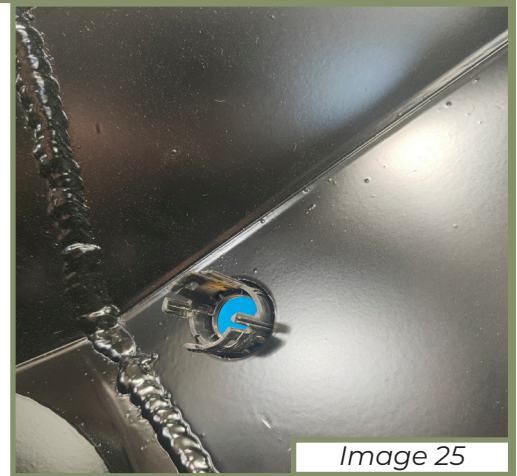


Image 25

8.2

Install all the sensor mounting clips into the bar in the same order and orientation as they were in the bumper. *Refer Image 25.*

Image 26

9

9.1

Install the factory wiring loom removed from the bumper into the bar by feeding it through the cutout section in the bar in the same orientation it was removed. *Refer Image 27.*

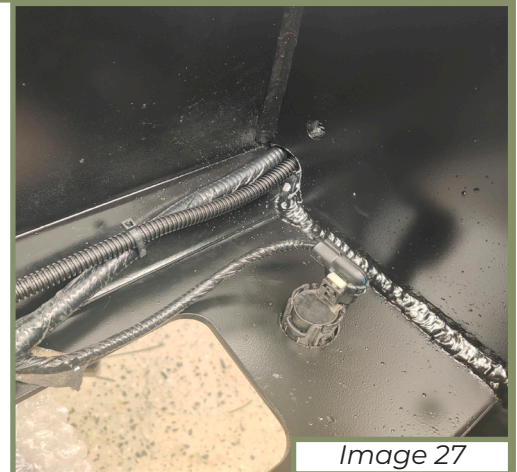


Image 27

9.2

Clip the wiring harness plugs back into all the sensors, use the 2 supplied sensor patch harnesses to extend sensors 2 and 5

NOTE: FAILURE TO INSTALL THIS PRODUCT AS SPECIFIED IN THE INSTALLATION PROCEDURE WILL VOID ALL WARRANTY. IF ANY PARTS HAVE ARRIVED DAMAGED OR WERE NOT SUPPLIED IN THE KIT, PLEASE TAKE PHOTOS AND THEN PROCEED TO CONTACT YOUR SUPPLIER.

10

10.1

Install the Indicator/parker lights to the outermost hole on each side of the bar.

Refer Image 29.



Image 29

10.2

Install the flood beam lights in the middle hole on each side of the bar.

Refer Image 30.

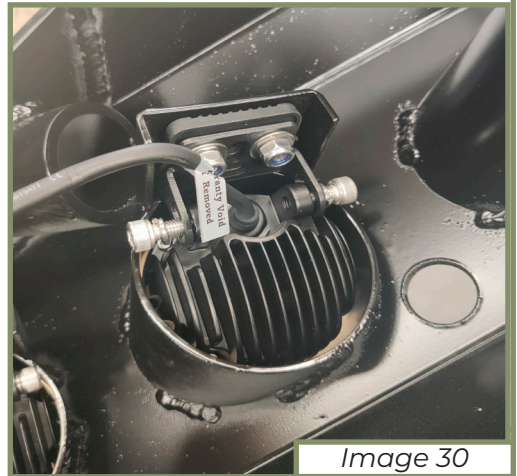


Image 30

10.3

Install the spot beam lights in the innermost hole on each side of the bar.

Refer Image 31.



Image 30

11

11.1

Before the bar is put on, it is recommended to get a qualified auto electrician to wire into the headlights for the indicator/parker

11.2

Before the bar is put on, it is also recommended to get a qualified auto electrician to install the wiring harness and switch for the flood/spot lights.

11.3

Before the bar is installed, you will also have to cut and extend the sensor wires to reach the new sensor locations.

NOTE: FAILURE TO INSTALL THIS PRODUCT AS SPECIFIED IN THE INSTALLATION PROCEDURE WILL VOID ALL WARRANTY. IF ANY PARTS HAVE ARRIVED DAMAGED OR WERE NOT SUPPLIED IN THE KIT, PLEASE TAKE PHOTOS AND THEN PROCEED TO CONTACT YOUR SUPPLIER.

12

12.1

With the help of a friend or friends, carefully guide the bar onto the cradle and loosely install the supplied M12 bolts into the mounting holes with M12 washers and lock nuts from the bolt kit.

Refer Image 32.



Image 32

12.2

Make sure the bar is aligned properly and measure your gaps, if everything looks good, proceed to tighten all the mounting bolts.

Refer Image 33.



Image 33

13

13.1

Measure 220mm up from the bottom of the inner guard and mark a line square across the inner guard repeat on the other side.

Refer Image 34 and 35.

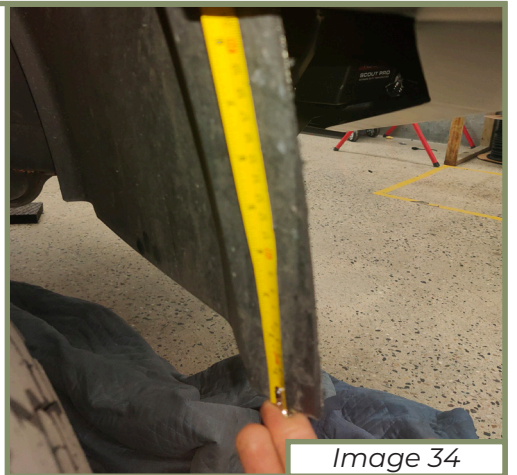


Image 34

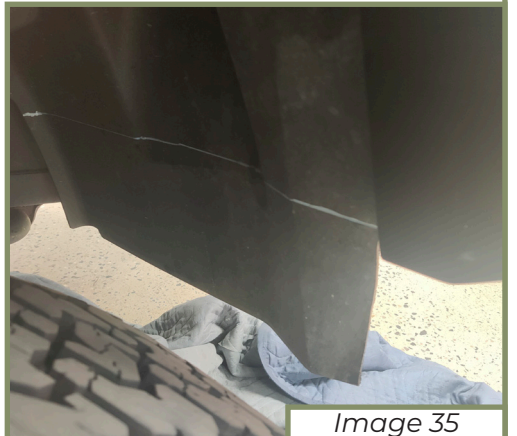


Image 35

NOTE: FAILURE TO INSTALL THIS PRODUCT AS SPECIFIED IN THE INSTALLATION PROCEDURE WILL VOID ALL WARRANTY. IF ANY PARTS HAVE ARRIVED DAMAGED OR WERE NOT SUPPLIED IN THE KIT, PLEASE TAKE PHOTOS AND THEN PROCEED TO CONTACT YOUR SUPPLIER.

13.2

Cut along the line using an air saw and then clean up the edge with a stanley knife, repeat on the other side.

Refer Image 36.

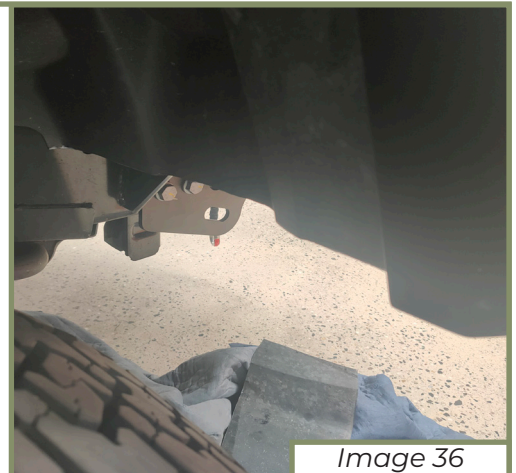


Image 36

14.1

Using the supplied inner guard mounting bracket, line up the bracket with the pre drilled hole on the bull bar and mark the hole on the inner guard. Proceed to drill the hole out to 6mm, repeat on the other side.

Refer Image 37.



Image 37

14.2

Secure the bracket to the inner guard and the bull bar using the M6 bolts, washers and lock nuts from the bolt kit, repeat on the other side.

Refer Image 38.

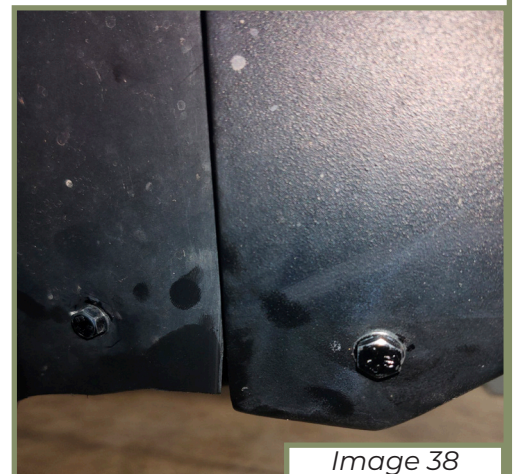


Image 38

14

15**15.1**

Line up the number plate central on the front face of the bar, mark the mounting holes and drill out to 6mm

15.2

Attach the number plate to the bar using the supplied M6 bolts washers and lock nuts.

16**16.1**

Connect all electrical plugs and cable tie up all wiring.

16.2

Check all fasteners are tightened and paint marked.

16.3

Test the function of all lights (and winch if installed)

16.4

Wipe down and clean all marks off the vehicle and bar.

Installation of the Ram 2500 Pre Runner Bull Bar is now complete.

NOTE: FAILURE TO INSTALL THIS PRODUCT AS SPECIFIED IN THE INSTALLATION PROCEDURE WILL VOID ALL WARRANTY. IF ANY PARTS HAVE ARRIVED DAMAGED OR WERE NOT SUPPLIED IN THE KIT, PLEASE TAKE PHOTOS AND THEN PROCEED TO CONTACT YOUR SUPPLIER.