

INSTALLATION INSTRUCTIONS

Ram 2500/3500 Winch Isolator Bracket Installation Procedure

NOTE: FAILURE TO INSTALL THIS PRODUCT AS SPECIFIED IN THE INSTALLATION PROCEDURE WILL VOID ALL WARRANTY. IF ANY PARTS HAVE ARRIVED DAMAGED OR WERE NOT SUPPLIED IN THE KIT, PLEASE TAKE PHOTOS AND THEN PROCEED TO CONTACT YOUR SUPPLIER.

IN THE BOX

- 1 x Fuse Panel Bracket
- 1 x Bolt kit
- 2 x Isolator terminal insulators

TOOLS REQUIRED

- Ratchet/electric ratchet
- Various sized sockets
- Various sized spanners
- Drill
- Drill bits
- Black Paint/Rust Preventative
- Marking Pen
- Masking Tape
- Vice
- Measuring Tape
- Rags



OVERLANDING
THE AUSSIE WAY



NOTE: FAILURE TO INSTALL THIS PRODUCT AS SPECIFIED IN THE INSTALLATION PROCEDURE WILL VOID ALL WARRANTY. IF ANY PARTS HAVE ARRIVED DAMAGED OR WERE NOT SUPPLIED IN THE KIT, PLEASE TAKE PHOTOS AND THEN PROCEED TO CONTACT YOUR SUPPLIER.

1

Locate the support beam on the RHS of the vehicle above the battery and apply some masking tape.

Refer Image 1.

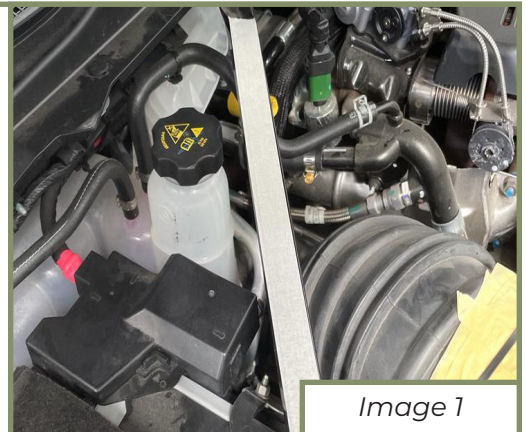


Image 1

2

2.1

Measure 120mm from the mounting stud on the wiper scuttle and mark a line.

Refer Image 2.

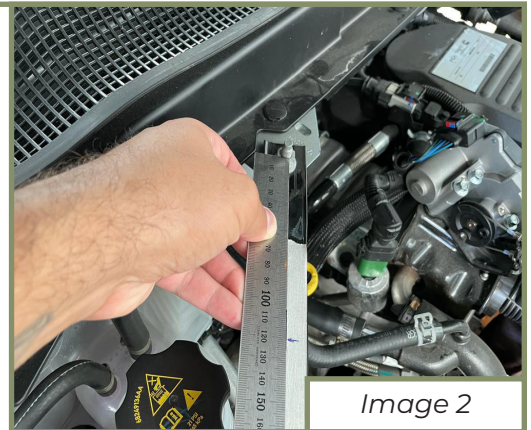


Image 2

2.2

Line up the edge of the bracket with the line marked in the previous step and mark out the mounting holes.

Refer Image 3 and 4.

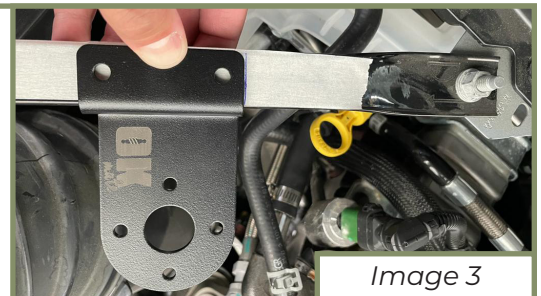


Image 3

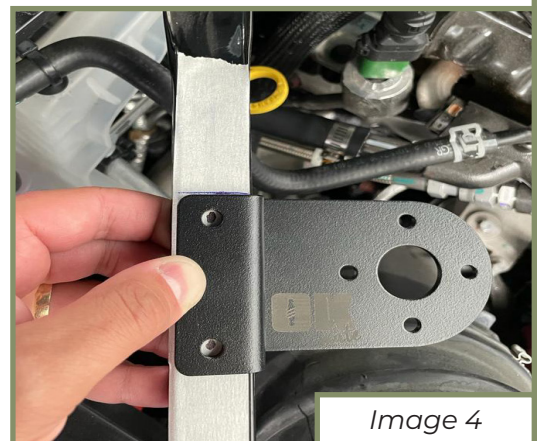


Image 4

NOTE: FAILURE TO INSTALL THIS PRODUCT AS SPECIFIED IN THE INSTALLATION PROCEDURE WILL VOID ALL WARRANTY. IF ANY PARTS HAVE ARRIVED DAMAGED OR WERE NOT SUPPLIED IN THE KIT, PLEASE TAKE PHOTOS AND THEN PROCEED TO CONTACT YOUR SUPPLIER.

3

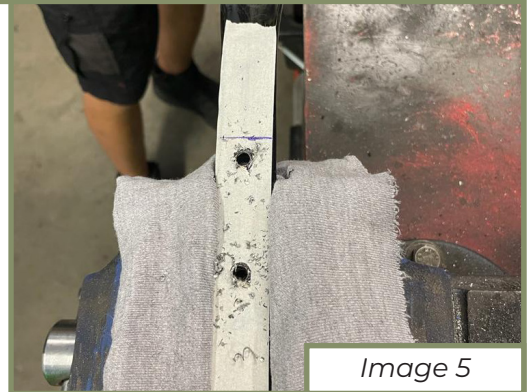
Remove both fasteners holding the support beam in place and remove the support beam from the vehicle, set aside the fasteners for later fitment.

4

4.1

Secure the support beam into a vice using some rags to avoid scratching the beam.

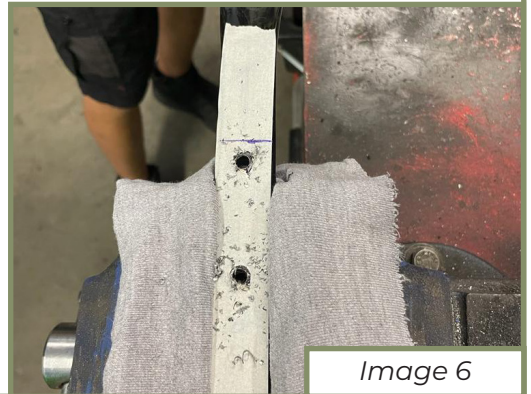
Refer Image 5.



4.2

Drill out the previously marked holes to 6.5mm.

Refer Image 6.



4.3

Remove the tape from the support beam and paint the hole with black paint or rust preventative.

Refer Image 7.



NOTE: FAILURE TO INSTALL THIS PRODUCT AS SPECIFIED IN THE INSTALLATION PROCEDURE WILL VOID ALL WARRANTY. IF ANY PARTS HAVE ARRIVED DAMAGED OR WERE NOT SUPPLIED IN THE KIT, PLEASE TAKE PHOTOS AND THEN PROCEED TO CONTACT YOUR SUPPLIER.

5

Reinstall the support beam with the fasteners previously set aside and tighten.

Refer Image 9.



6

6.1

Secure the switch module bracket to the support beam using the supplied M6 hex head bolts, washers and lock nuts.

Refer Image 9.

6.2

Tighten both bolts.

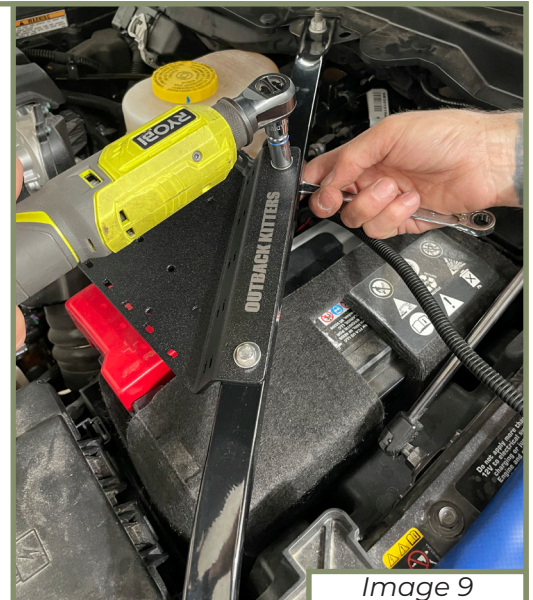


Image 9

Installation of the Outback Kitters Ram 2500/3500 Winch Isolator Bracket is now complete.

NOTE: FAILURE TO INSTALL THIS PRODUCT AS SPECIFIED IN THE INSTALLATION PROCEDURE WILL VOID ALL WARRANTY. IF ANY PARTS HAVE ARRIVED DAMAGED OR WERE NOT SUPPLIED IN THE KIT, PLEASE TAKE PHOTOS AND THEN PROCEED TO CONTACT YOUR SUPPLIER.