

## INSTRUCTIONS FOR USE

### SAFETY REQUIREMENTS

- KEEP OUT OF REACH OF CHILDREN.
- DO NOT use this tool with acidic, flammable or combustible products. Use only with TORNADOR® approved products or neutral pH cleaners.
- Do not point cleaning tool at face or body.
- Avoid breathing in dust or handling debris that can be harmful to your health.
- Should you notice a tool malfunction, discontinue use and contact your supplier.
- Use caution when other people are in your surroundings and work area.
- Always disconnect the tool from the air supply when not in use and before changing accessories or when performing routine maintenance.
- Always check the tool for leaking hoses, loose fittings or damaged parts.
- The TORNADOR® VELOCITY VAC can cause noise from air pressure. Always wear hearing protection in order to avoid noise which can be damaging to your health.
- When using the TORNADOR® VELOCITY VAC, small pieces of debris can be whirled into the air. Always wear protective goggles or glasses to prevent eye contact.
- The TORNADOR® VELOCITY VAC nebulizes the cleaning liquid. Wear appropriate respiratory protection to prevent health hazards from inhalation.
- We recommend that you use caution cleaning safety relation components such as seat belts as well as other areas like headliners, electrical or electronic modules.



**ZV-200**  
**TORNADOR®**  
**VELOCITY-VAC**  
**ATTACHMENT**

### AIR REQUIREMENTS

The TORNADOR® VELOCITY VAC requires a constant air pressure between 5.5 and 6.3 CFM at 78 to 90 psi, for optimum performance. DO NOT EXCEED 90 psi.

**CAUTION:** Constant air supply rates vary depending on the size and power of the compressor. Always make sure tank and air lines are free from impurities, oil and water contamination.

## INSTRUCTIONS FOR USE

Check all contents and read instructions carefully.

First you must have a Z-020 Tornador® Black in good working condition to use the ZV-200 Tornador® Velocity Vac.

### Installing the Flexible Tube (part # VT-120)

**Step 1:** Remove cone from Z-020 TORNADOR® BLACK. *fig. #1*

Take supplied small flexible tube (part # VT-120) and press onto the rotation set as shown in *fig. #2 and 3* on the right.

**NOTE:** In order for the rotation set to rotate properly and obtain full function, be sure the flexible tube duplicates the finished step shown in *fig. #4*.

### Installing the ZV-200 Velocity Vacuum Attachment

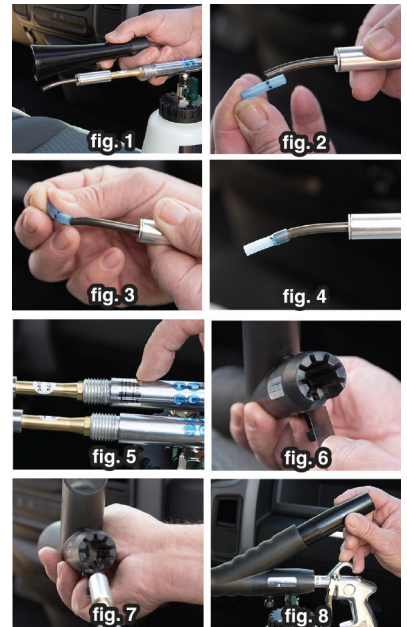
**Fig 5.** Before place the vacuum attachment onto the TORNADOR® Z-020 BLACK, be sure the valve body is free of labels or dirt that may interfere with the attachment. **DO NOT FORCE** the attachment. The part should install easily if the valve body is clean and free of labels.

**Fig 6.** Inside the parts bag you will find a Flat Plastic Key used to seat the attachment to the valve body. Place the Flat Plastic Key into place.

**Fig 7.** Once the Flat Plastic Key is in place, slide the Vacuum Attachment onto the gun assembly furthest back meeting the gun handle. Next tighten Screw (part # VS-023) firmly to gun assembly. **DO NOT OVER TIGHTEN!**

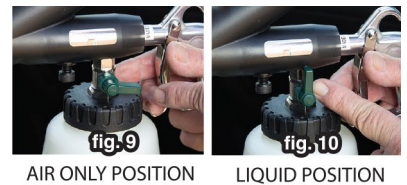
**Fig 8.** Place the Reducer (part # VR-200) into Vacuum Attachment then attach your Flexible Wet/Dry Vacuum Hose onto the Reducer. Connect to WET DRY VACUUM ONLY!

For best results and control, use two hands during operation. Grasp the attachment with one hand and use the other hand to control the gun assembly; depressing the trigger to begin use.



## CLEANING STEPS & TIPS

1. Remove large debris first. Start by turning on your wet-dry vacuum.
2. Connect air source and then with tool in hand, turn the Green Air Reverse Switch downwards to the "Air Only" position. **See fig. #9.**
3. With vacuum on and air connected, depress trigger and begin initial vacuuming. This will assure that any loose dirt and debris will not interfere with the liquid stage and avoid mixing unwanted liquid and dirt during the process.
4. Next, USING APPROVED AND PROPERLY DILUTED CLEANING SOLUTION, turn the Green Air Reverse Switch upright to "Liquid Position". **See fig. #10.** With the vacuum on and air connected, begin cleaning process. Repeat if necessary. **NOTE:** For heavy stains, pre-spot the area to be cleaned, then follow with the ZV-200 Tornador® Velocity Vac.



## CARE & MAINTENANCE

- Maintain proper air pressure. **DO NOT EXCEED 90 psi.**
- **DO NOT USE ACIDIC OR HIGH ALKALINE CLEANERS.** Use only neutral pH cleaners to avoid damage to rotation set.
- As for many tools, common maintenance procedures will ensure optimal performance and tool life. **Keep It Clean!**
- **NOTE:** Be sure the tool has been disconnected from the air source and vacuum hose has been removed before performing any maintenance.
- Depending on the time and type of use, always take time to remove the attachment and inspect for dirt build up or trapped debris. Rinse attachment, then using pneumatic oil or a thick lubricant, oil rotation set often. **See fig. #11.** Reinstall attachment for next use.
- When using the Velocity Vac, you will notice a substantial amount of dirt and debris that will be disrupted by the rotation set. This happens after waking up the fabric or carpet fibers when loosening the dirt. Keeping the attachment free of dirt build-up will ensure longer run times.
- To prolong the life of the rotation set and maintain peak performance, be sure no dirt build up has formed around the rotation set. **See fig. #12.**

