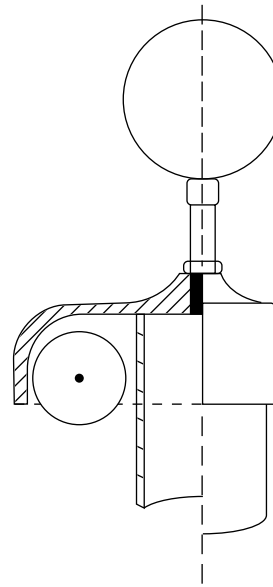
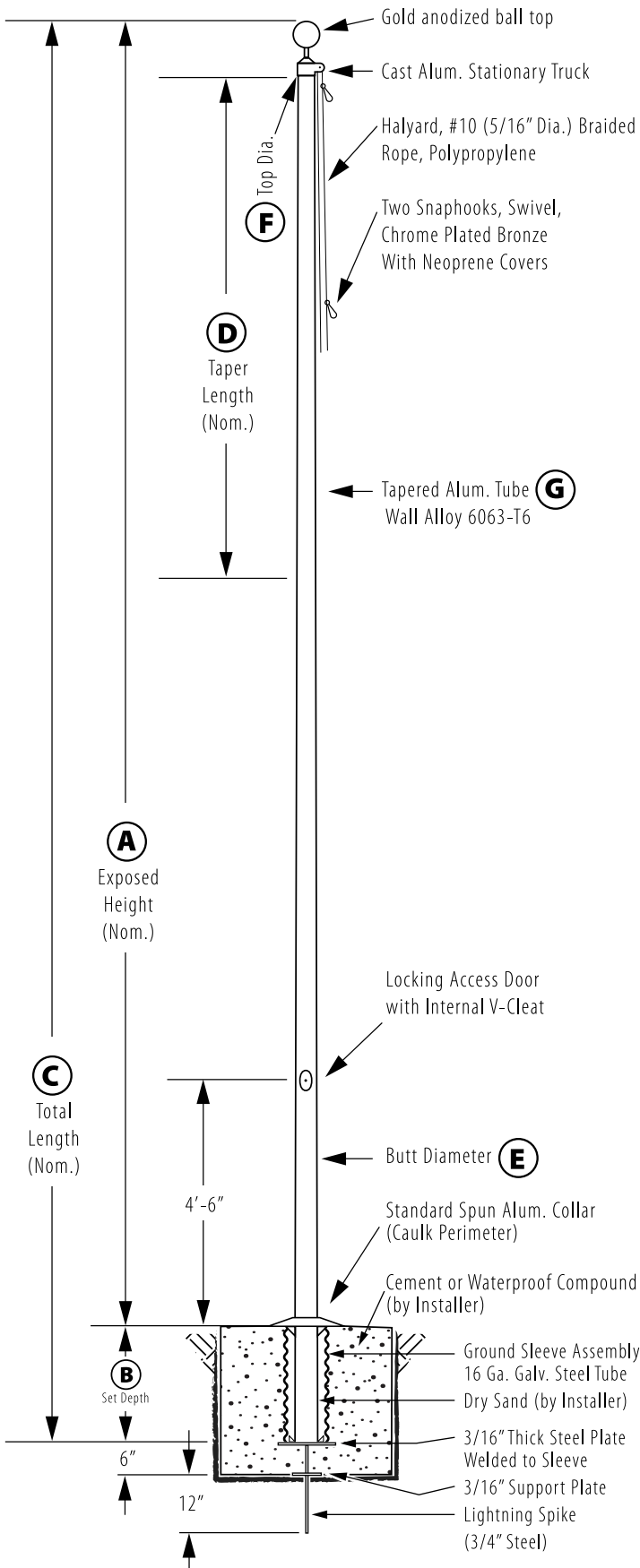
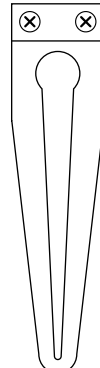


Internal V-Cleat - Ground Set

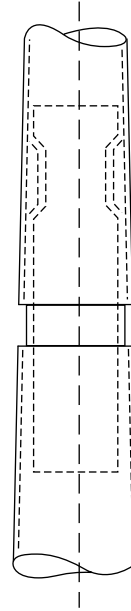
Model # IVC25C51-AD



Stationary Truck Detail
Cast Aluminum Body



V-Cleat



All shafts with overall length of 33' or more are shipped in **two sections**

1-1/2" maximum shop gap allowed for field fitting (ram for tight joint)

Joint occurs on 2 or more piece flagpoles.

Customer Name:

Rep Name:

Architect Name:

Project:

Location:

PO Number:

Quantity:

Notes:

A - Exposed Height	25 ft.
B - Set Depth	2 ft. 6 in.
C - Total Length	27 ft. 6 in.
D - Taper	11 ft.
E - Butt Diameter	5 in.
F - Top Diameter	3 in.
G - Wall Thickness	0.156 in.

Finish:
Anodized, Dark Bronze

Piece: 1

Accessories:
Gold anodized ball top, standard collar