



WILDTRAK
LEISURE AUSTRALIA

Multi-function Car Jump Starter

USER MANUAL

Model: S4000



What's in the box

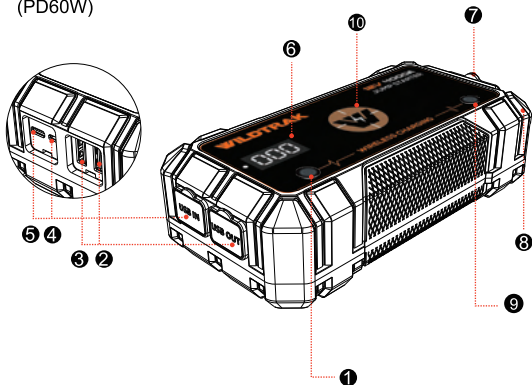
- Wildtrak S4000
- Digital smart jumper clamps with starter cable
- 1x Multi-charging cable
- 1x 12V Female cig socket
- 1x 12V Car charger
- 1x AC Wall charger
- 1x User-friendly manual
- 1x Zipper case
- 1x Storage bag

SPECIFICATIONS

Capacity	99.16Wh/28800mAh
EC5 Output	12V/2000A (STARTING) 12V/4000A (MAX)
USB1 Output	5V/3A, 9V/2A, 12V/1.5A (QC3.0)
USB2 Output	5V/3A, 9V/2A, 12V/1.5A (QC3.0)
Type-C In/Output	5V/3A, 9V/3A, 12V/3A, 15V/3A, 20V/3A Max (PD60W)
Micro Input	5V/2A
Wireless Charging Output	15W MAX
Charging Time	PD60W: 2 Hours Type-C: 4.5 Hours Micro: 8 Hours
LED Light Power	White: 1W
Working Temp	-20°C~+60°C / -4°F ~ +140°F
Dimensions	209 x 107 x 56.4mm

Product diagrams

- 1 Power button
- 2 USB1: 5V/3A, 9V/2A, 12V/1.5A
- 3 USB2: 5V/3A, 9V/2A, 12V/1.5A
- 4 Micro input: 5V/2A
- 5 Type-C In/Output: 5V/3A ; 9V/3A ; 12V/3A ; 15V/3A ; 20V/3A Max (PD60W)
- 6 LED display
- 7 EC5 jump start output
- 8 LED light
- 9 Light button
- 10 Wireless charging



Accessories

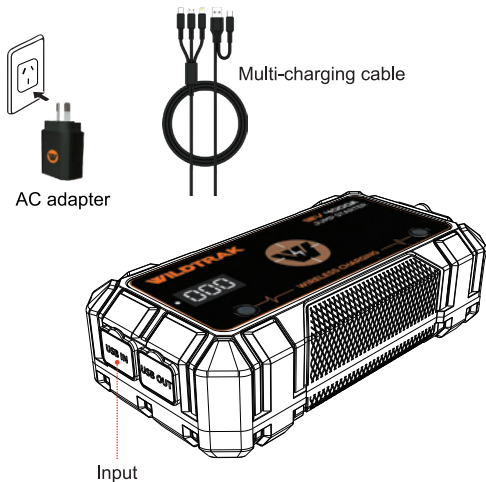
- Digital smart jumper clamps with starter cable
- 12V Female cig socket
- 12V Car charger
- AC wall charger
- Multi-charging cable
- Accessory storage bag



Charge the Jump Starter battery

Charging with an AC adapter

1. Connect the battery input with Type-C cable.
2. Connect the Type-C cable to AC adapter.
3. Plug the AC adapter into a power source.



LED display

Press the power button, the LED display shows as follows:

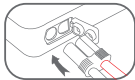


How to Jump Start Your Vehicle



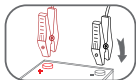
This unit is designed for jump starting 12V car batteries only and rated for all gas and up to 10 litres diesel. Do not attempt to jump start vehicles with a higher battery rating, or different voltage. If the vehicle isn't started immediately, please wait for 1 minute to allow the device to cool down. Do not try to restart the vehicle after three consecutive attempts as this may damage the unit. Check your vehicle for other possible reasons why it can't be restarted.

Operating instructions



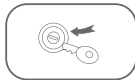
First step:

Press the power button to turn it on. Check the battery shown on the LED display, then plug jumper cable into battery pack outlet.



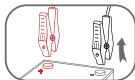
Second step:

Connect the jumper to the car battery - red clamp to positive, black clamp to negative pole of car battery.



Third step:


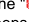

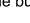

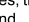


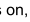
Turn on the car engine to start car.



Fourth step:

Pull the plug of battery terminal from jump starter and remove clamps from auto battery.

Digital Smart Jumper Clamp Indicator Instruction

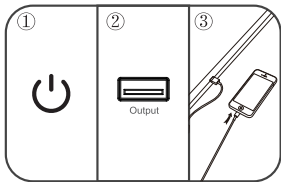
Item	Technical parameters	Instruction
Input low voltage protection	14.0V±0.5V	When the power of the jump starter is too low, after connecting the starter and the car, the "  " symbol is on, the buzzer sounds once every 1 second, and the current voltage of the starter power is displayed.
Input high voltage protection	17.5V±0.5V	When the car voltage is too high, after connecting the starter and the car, the "  " character flashes and the buzzer beeps for a long time.
Reverse connection protection	Support	When the red/black clips of the wire clip is reversely connected to the car battery (battery voltage ≥0.8V), the "  " symbol is on, the "  " symbol flashes, the buzzer sounds once every 1 second.
Short circuit protection	Support	When the red and black clips are short-circuited in the standby state, the "  " symbol is on, the "  " symbol flashes, the buzzer sounds once every 1 second.
Multi-frequency protection	8 times	When start up to 8 times continuously, the "  " symbol flashes.
Work instruction	Support	When working normally, display the voltage of the current jump starter.
Standby instruction	Support	The "  " symbol circulate instructions from left to right.
Car battery voltage detection	Support	When the wire clip is only connected to the car battery (the car battery voltage needs to be ≥8V), the "  " symbol is on, and the current car battery voltage is displayed.

How to charge a mobile phone or digital products?

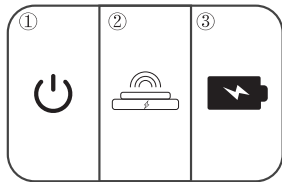


With powerful capacity and three USB output ports (one is USB Quick Charge PD60W, it can full charge your smart phones and tablets up to 75% faster than a standard charger. You can charge three devices at the same time.

Operating instructions:



Press the power button—>connect the phone and power bank output port—>charging

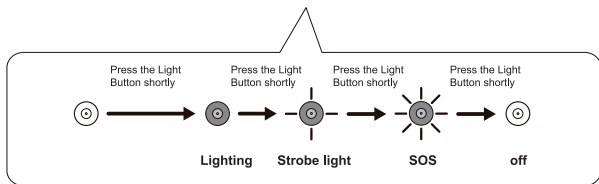


Press the power button—>put the phone on wireless charging area-->charging

LED flashlight



Short press the Light Button to turn on the flashlight. The battery capacity indicator lights up. Short press the light button again to scroll through the lighting, Strobe, SOS. Short press again to turn off the flashlight. The flashlight offers more than 40 hours of continuous use when fully charged.



Safety Warning

1. Do not connect the red and black clamps, this will cause the unit to short circuit.
2. Do not disassemble the unit.
3. Stop using immediately if the item is leaking or has an odor.
4. Do not use in extreme temperatures, high humidity, or in/around water.
5. Wait 1 minute between attempting two starts.
6. Do not use if the battery power is under 10%, it is recommended not to use the unit under 50%
7. Charge for at least 3 hours and ensure the battery is full charged before first use, and every 3 months after.

Warranty Exemption

1. The 12 months manufacturer's warranty will be void if:
The unit has been incorrectly used or operated outside of the safety warning guidelines.
2. The unit has been repaired, disassembled or modified by persons not authorized to do so by the manufacturer.
3. The unit has been charged using a non-compliant charger.