



**WILDTRAK**  
LEISURE AUSTRALIA

# Multi-function Car Jump Starter

## USER MANUAL

Model: S2000



---

## What's in the box

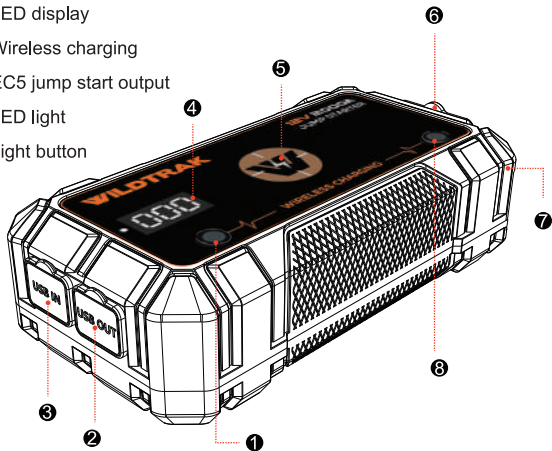
- Wildtrak S2000
- Smart battery clamps with starter cable
- 1x Multi-charging cable
- 1x 12V Female cig socket
- 1x 12V Car charger
- 1x AC Wall charger
- 1x User-friendly manual
- 1x Zipper case
- 1x Storage bag

## Specifications

Model number	S2000
Capacity	62.16Wh/16800mAh
EC5 output	12V/2000A maximum starting power (max.)
USB output	5V/3A, 9V/2A, 12V/1.5A
Wireless charging output	5W/7.5W/10W MAX
Type-C input	5V/2A, 9V/2A
Charging time	3.5-6 hours
LED light power	White: 1W
Working temperature	-20 °C ~+60 °C / -4°F ~+140°F
Dimension (LxWxH)	180*92*48.5mm

## Product diagrams

- 1 Power button
- 2 Output: 5V/3A, 9V/2A, 12V/1.5A
- 3 Type-C input: 5V/2A, 9V/2A
- 4 LED display
- 5 Wireless charging
- 6 EC5 jump start output
- 7 LED light
- 8 Light button



## Accessories

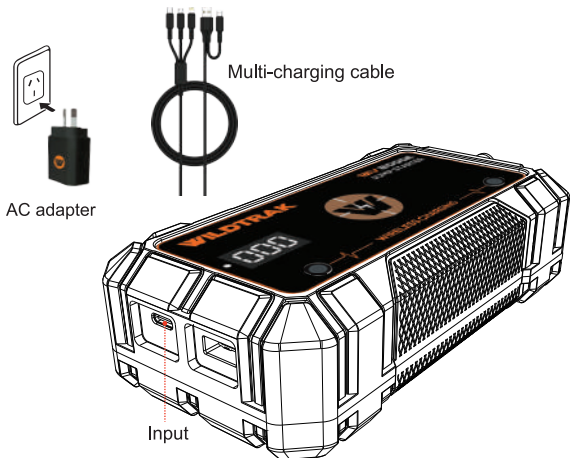
- Smart battery clamps with cable
- 12V Female cig socket
- 12V Car charger
- AC Wall charger
- Multi-charging cable
- Accessory storage bag



## Charge the Jump Starter battery

### Charging with an AC adapter

1. Connect the battery input with Type-C cable.
2. Connect the Type-C cable to AC adapter.
3. Plug the AC adapter into a power source.



### LED Display

Press the power button, the LED display shows as follows:

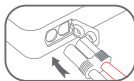


# How to Jump Start Your Vehicle



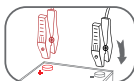
This unit is designed for jump starting 12V car batteries only and rated for gasoline engines up to 8 litres and diesel engines up to 6 litres. Do not attempt to jump start vehicles with a higher battery rating, or different voltage. If the vehicle isn't started immediately, please wait for 1 minute to allow the device to cool down. Do not try to restart the vehicle after three consecutive attempts as this may damage the unit. Check your vehicle for other possible reasons why it can't be restarted.

## Operating instructions



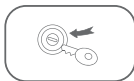
### First step:

Press the power button to turn it on. Check the battery shown on the LED display, then plug jumper cable into battery pack outlet.



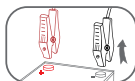
### Second step:

Connect the jumper to the car battery - red clamp to positive, black clamp to negative pole of car battery.



### Third step:

Turn on the car engine to start car.



### Fourth step:

Pull the plug of battery terminal from jump starter and remove clamps from auto battery.

# Smart Jumper Clamp Indicator Instructions

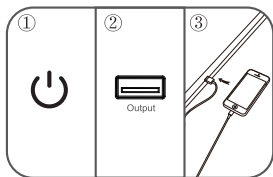
Item	Technical parameters	Instruction
Input low voltage protection	13.0V±0.3V	The red light is always on, the green light is off, and the buzzer does not sound.
Input high voltage protection	18.0V±0.5V	The red light is always on, the green light is off, and the buzzer does not sound.
Reverse connection protection	Support	The red/black clip of the wire clip is reversely connected to the car battery(battery voltage 20.8V), the red light is always on, the green light is off, and the buzzer sounds at short intervals
Start timeout	90S±10%	The red light is always on, the green light is always on, and the buzzer does not sound.
Protection	Support	When working normally,the green light is always on, the red light is off, and the buzzer beeps once.
Connect to the high voltage alarm	Support	The clip is mistakenly connected to battery that is >16V, the red light is always on, the green light is off, and the buzzer sounds slowly and shortly
Automatic anti-virtual electricity function		When the car battery voltage is higher than the Starter battery voltage, the output is automatically turned off and the green light is on, at this time, it can be ignited normally.If the car battery voltage drops and is lower than the starter battery voltage during the ignition process, the smart clip will automatically turn on the output to complete the startup process
Short circuit protection	Support	When the red and black clips are short-circuited, no sparks, no damage, the red light is always on, the green light is off and the buzzer 1 long and 2 short beeps.

## How to charge a mobile phone or digital products?

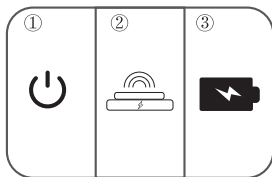


With powerful capacity and USB Quick Charger(5V/3A,9V/2A,12V/1.5A), it can full charge your smart phones and tablets up to 75% faster than a standard charger. It also provides wireless charging function(5W/7.5W/10W MAX), making it's more convenient to charge your wireless charging phones! You can charge two devices at the same time.

### Operating instructions



Press the power button-->connect the phone and power bank output port-->charging

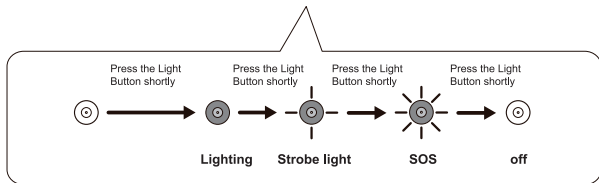


Press the power button-->put the phone on wireless charging area-->charging

## LED flashlight



Short press the Light Button to turn on the flashlight. The battery capacity indicator lights up. Short press the light button again to scroll through the lighting, Strobe, SOS. Short press again to turn off the flashlight. The flashlight offers more than 35 hours of continuous use when fully charged.





## Safety Warning

1. Do not connect the red and black clamps, this will cause the unit to short circuit.
2. Do not disassemble the unit.
3. Stop using immediately if the item is leaking or has an odor.
4. Do not use in extreme temperatures, high humidity, or in/around water.
5. Wait 1 minute between attempting two starts.
6. Do not use if the battery power is under 10%, it is recommended not to use the unit under 50%
7. Charge for at least 3 hours and ensure the battery is full charged before first use, and every 3 months after.

## Warranty Exemption

1. The 12 months manufacturer's warranty will be void if:  
The unit has been incorrectly used or operated outside of the safety warning guidelines.
2. The unit has been repaired, disassembled or modified by persons not authorized to do so by the manufacturer.
3. The unit has been charged using a non-compliant charger.