



[WWW.BACKUPBATTERYPOWER.COM](http://WWW.BACKUPBATTERYPOWER.COM)

**(855) 330-7799**

# **Battery Bank Installation User's MANUAL**

**Table of Contents**

Chapter 1. Important Safety Instructions ..... 2

Chapter 2. Introduction to the Rear Panel ..... 2

    2.1. Rear Panel Descriptions ..... 3

Chapter 3. Installation and Operation ..... 4

    3.1. Unpacking ..... 4

    3.2. Selecting Installation Position ..... 5

    3.3. Installation of Accesories ..... 5

    3.4. Battery Replacement..... 6

    3.5. Wiring of UPS and Battery Bank 4P..... 7

    3.6. Wiring of UPS and Battery Bank 6P..... 8

    3.7. Storage Instruction ..... 9

    3.8. Specification ..... 10

# Chapter 1. Important Safety Instructions

## ***SAVE THESE INSTRUCTIONS***

This manual contains important safety instructions. Read all safety, installation and operating instructions before operating the system.

This manual contains important instructions that should be followed during installation and maintenance of the battery bank and batteries.

### ***An Important Notice***

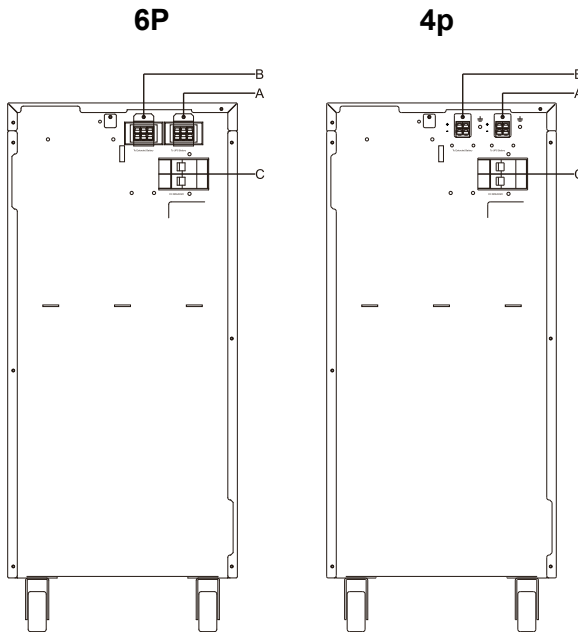
- Make sure the battery bank is installed within the proper environment as specified. (0-40° C and 30-90% non-condensing humidity)
- Do not install the battery bank under direct sunlight. Your warranty will be void if the batteries fail due to overheating.
- This battery bank is designed for indoor use only.
- This battery bank is not designed for use in dusty, corrosive and salty environment .
- The warranty for this battery bank will be void if water or other liquid is spilt or poured directly onto the battery bank. Similarly we do not warrant any damage to the battery bank if foreign objects are deliberately or accidentally inserted into the battery bank enclosure.
- The battery will discharge naturally if the system is unused for a period of time. It should be recharged every 2-3 months if unused. If this is not done, then the warranty will be null and void. During normal operation, the batteries will be automatically remained in charged condition
- External battery cabinets supplied with the UPS shall have adequate installation instructions to define cable sizes for connection to the UPS. Installation instructions for the battery shall be provided by the UPS battery manufacturer.
- To avoid electrical shock, turn off the unit and unplug it from the AC power source before servicing the battery.
- Do not disconnect battery connectors under load.” or equivalent.
- Battery replacement and external battery cabinet installation shall be handled by SERVICE PERSONNEL only.
- Connection to External Battery shall be installed by SERVICE PERSONNEL only
- Installation or replacement of batteries located in a SERVICE ACCESS AREA:  
The service manual shall include the following instructions for battery replacement and disposal:
  - A) Servicing of batteries should be performed or supervised by personnel knowledgeable about batteries and the required precautions.
  - B) When replacing batteries, replace with the same type and number of batteries or battery packs.
  - C) CAUTION: Do not dispose of batteries in a fire. The batteries may explode.
  - D) CAUTION: Do not open or mutilate batteries. Released electrolyte is harmful to the skin and eyes. It may be toxic.
  - E) CAUTION: A battery can present a risk of electrical shock and high short-circuit current. Contact with any part of a grounded battery can result in electrical shock.

The following precautions should be observed when working on batteries:

- a) Remove watches, rings, or other metal objects.
- b) Use tools with insulated handles.
- c) Wear rubber gloves and boots.
- d) Do not lay tools or metal parts on top of batteries.
- e) Disconnect charging source and load prior to installing or maintaining the battery.
- f) Remove battery grounds during installation and maintenance to reduce likelihood of shock. Remove the connection from ground if any part of the battery is determined to be grounded.

## Chapter 2. Introduction to the Rear Panel

### 2.1. Rear Panel Descriptions



- A. To UPS Battery Connector**  
**B. To Extended Battery Connector**  
**C. DC Breaker**

# Chapter 3. Installation and Operation

Note: The packing condition and the external outlook of the unit should be inspected carefully before installation. Retain the packing material for future use.

## 3.1. Unpacking

3.1.1. Take the battery bank out of the PE foam.

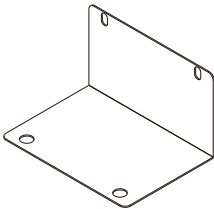
3.1.2. Remove the packing materials.

Note: The battery bank module is approx. 170 kgs, be cautious when unpacking and lifting the unit to avoid injury.

3.1.3. Standard Package includes:

- **User Manual**
- **Metal Accessories Kit as below:**

A1



X1

A2



X2

FOR 6P

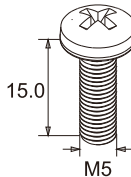
A3



X2

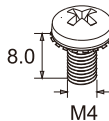
FOR 4P

S1



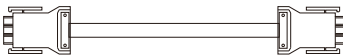
X2

S2



X2

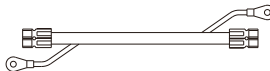
C1



X1

FOR 6P

C2



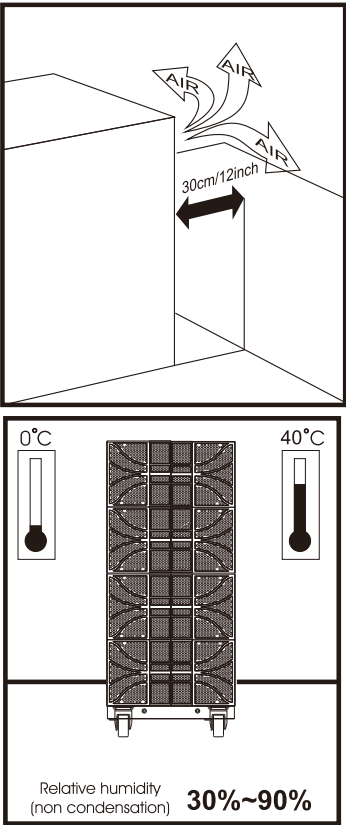
X1

FOR 4P

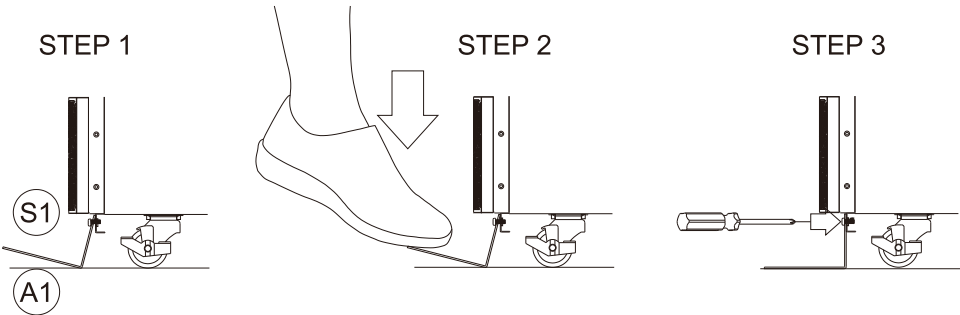
### 3.2. Selecting Installation Position

It is necessary to select a proper environment to install the unit, in order to minimize the possibility of damage to the battery bank and extend the life of the batteries. Please follow the instructions below:

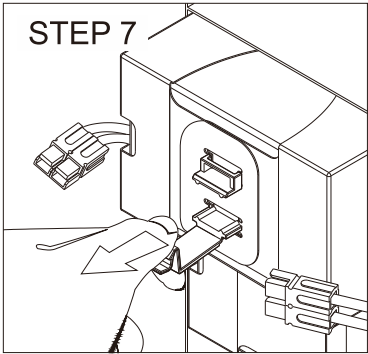
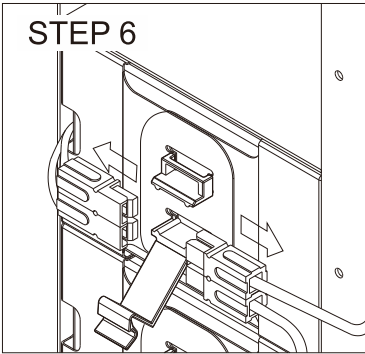
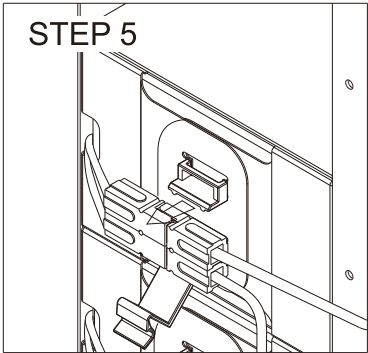
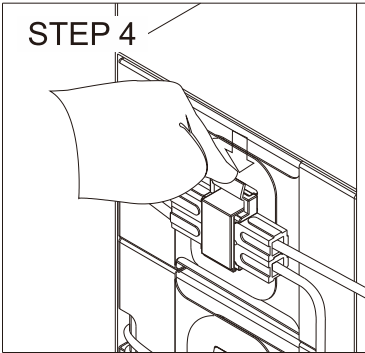
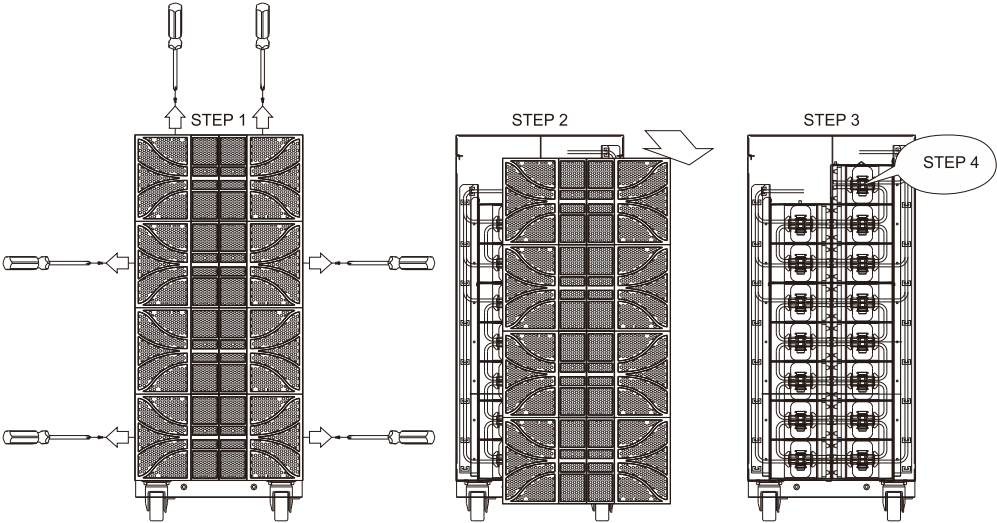
- 3.2.1. Keep at least 20cm(8 inches) clearance from the rear panel of the battery bank from the wall or other obstructions.
- 3.2.2. Do not block the air-flow to the ventilation openings of the unit.
- 3.2.3. Please ensure the installation site environmental conditions are in accordance with the battery bank working specifications to avoid overheat and excessive moisture.
- 3.2.4. Do not place the battery bank in a dusty or corrosive environment or near any flammable objects.
- 3.2.5. This battery bank is not designed for outdoor use.



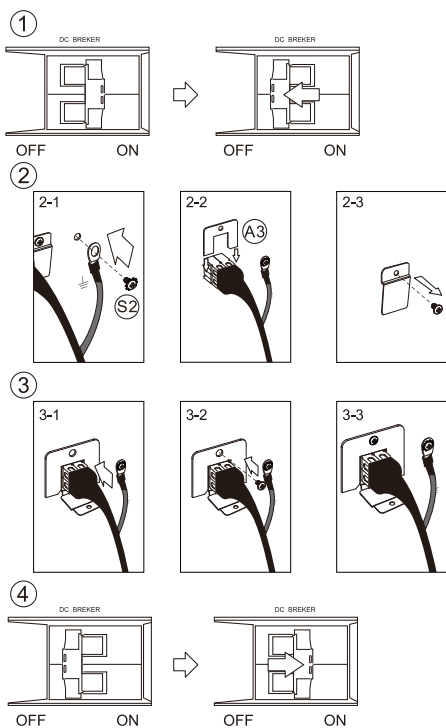
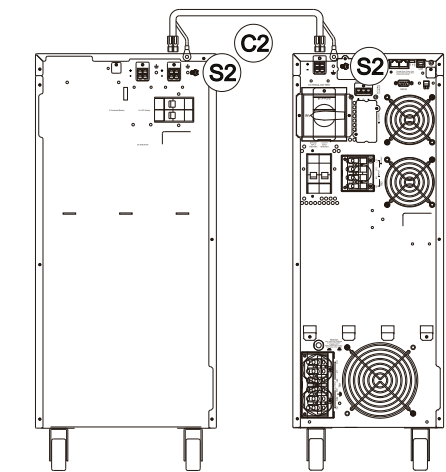
### 3.3. Installation of Accesories



3.4. Battery Replacement

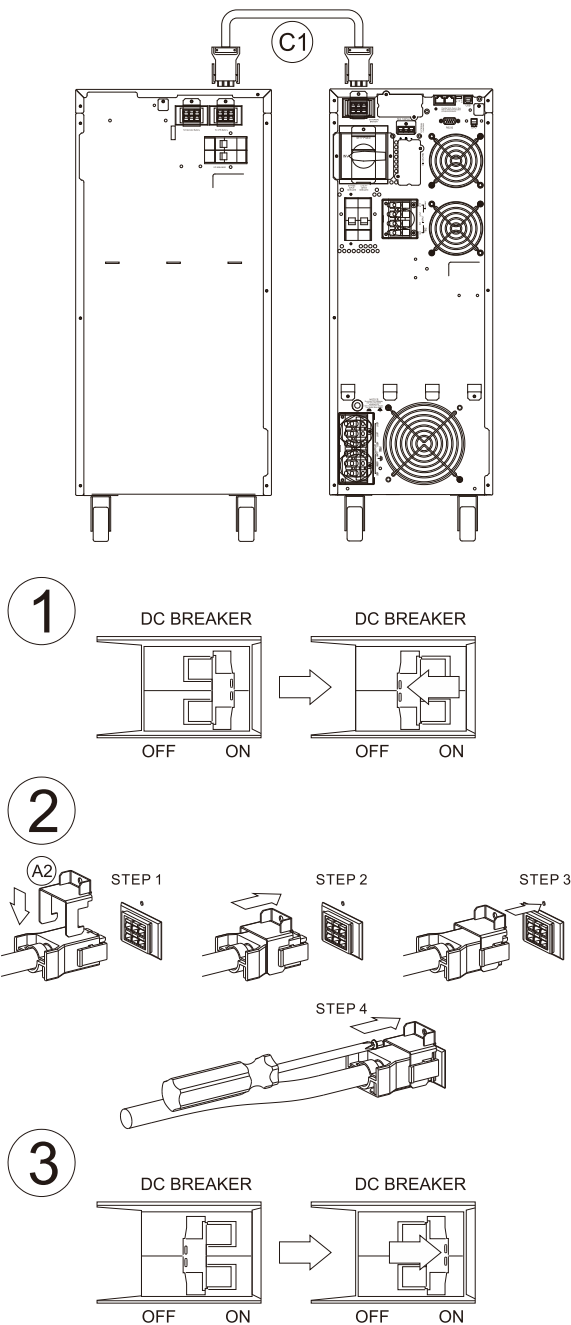


### 3.5. Wiring of UPS and Battery Bank 4P





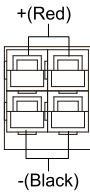
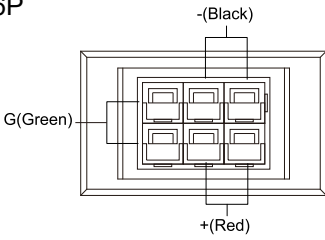
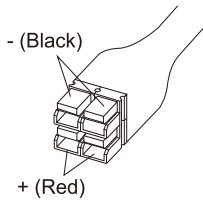
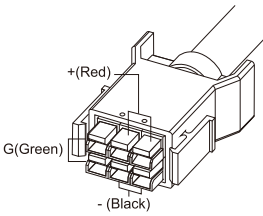
### 3.6. Wiring of UPS and Battery Bank 6P



### **3.7. Storage Instruction**

For extended storage through moderate climate(-15 to +30 °C / +5 to +86 °F), the batteries should be charged for 12 hours every 6 months by plugging the UPS power cord into the wall receptacle. Repeat this every 3 months under high temperature (+30 to +45 °C / +86 to +113 °F) environment.

### 3.8. Specification

Battery bank						
Voltage Rating	144Vdc	168Vdc	192Vdc	216Vdc	240Vdc	
Capacity x Unit x Strings	7Ah/9Ah					
	2x12+4x3	2 x 9 + 4 x 6	2x6+4x9	2x3+4x12	4 x 1 5	
DC Sockets	<div><div>4P</div><div></div></div> <div><div>6P</div><div></div></div>					
DC Plugs	<div><div>4P</div><div></div></div> <div><div>6P</div><div></div></div>					
Dimensions (WxHxD, mm/inch)		288x661x663 mm 11.3x26.0x26.1 inch				
Weight (kg/lb)	W/O	22kg 48.5 lb				
	7Ah 2.15 kg 4.74 lb	99.4 kg 219.1 lb	112.3 kg 247.6 lb	125.2 kg 276 lb	138.1 kg 304.5 lb	151 kg 332.9 lb
	9Ah 2.6 kg 5.73 lb	115.6 kg 254.9 lb	131.2 kg 289.2 lb	146.8 kg 323.6 lb	162.4 kg 358 lb	178 kg 392.4 lb
Operation Environment		0~40℃ / 32~104℉, 30-90%RH non-condensing				
Compliance		CE / cULus				



192321752061005