

Bloom planter

by Eugeni Quitllet

Bloom lamp-planter collection, designed by Eugeni Quitllet for Vondom.
Metaphorically, this collection **captures the flowering stage found in nature.**

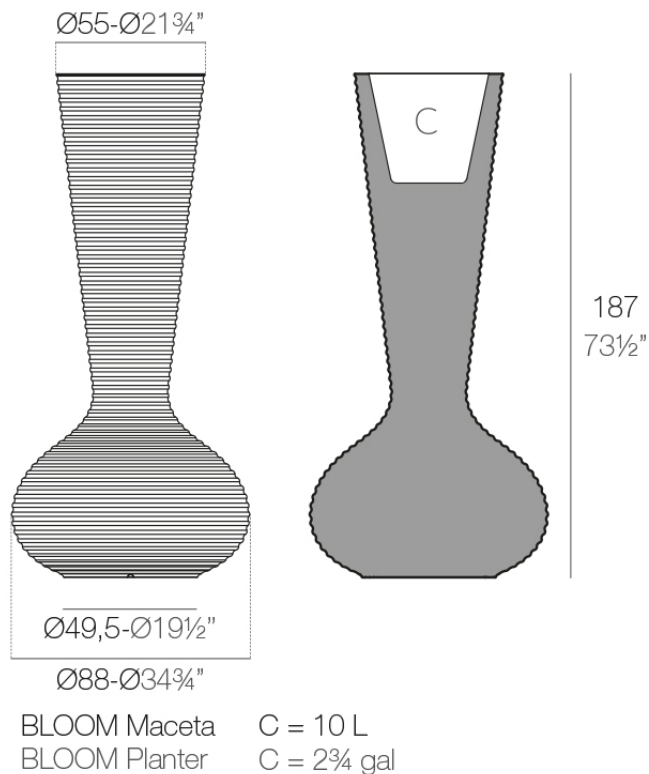


Info

Description

Made of polyethylene resin by rotational moulding. 100% Recyclable. Item suitable for indoor and outdoor use. Available in different finishes.

Weight: 35.06 Kg



Finishes

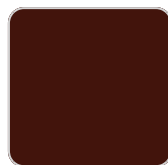
finishes

BASIC

Ref. 65019A



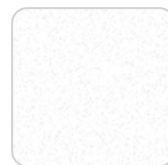
green



purjai red



orange



ice



notte blue



crema



white



black



bronze



steel



anthracite



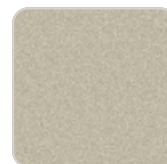
red



khaki



taupe



ecru



VONDOM

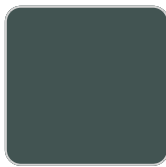
beige



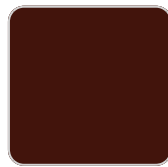
Matt Polyethylene

SELF-WATERING

Ref. 65019R



green



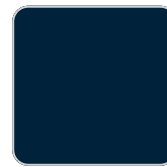
purjai red



orange



ice



notte blue



crema



white



black



bronze



steel



anthracite



red



khaki



taupe



ecru



VONDOM

beige



Self-watering system included in all planters except those with basic finish

LACQUERED

Ref. 65019F



purjai red



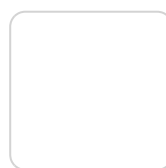
orange



notte blue



crema



white



black



bronze



steel



anthracite



red



khaki



taupe



ecru



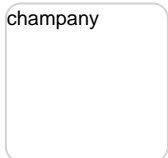
beige



modo green



champany



Lacquered Polyethylene

lighting

WHITE LED
Ref. 65019W

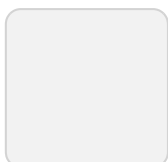


ice



White internally lit unit with LED technology. Available only in matte ice white finish.

RGBW LED
Ref. 65019L



ice



Unit with internal lighting with RGBW LED technology and remote control unit for switching colors. Available only in matte ice white finish. Remote control included.

RGBW LED DMX Ref. 65019D



Unit with internal lighting with RGBW LED technology and remote control unit for switching colors. Also controlled by DMX-1024 (wireless), enabling communication between one or more products simultaneously via the DMX transmitter (not included). There are two options to choose from: Professional XLR DMX and Home WIFI DMX. (Remote control included).
Optional battery

RGBW LED BATTERY Ref. 65019Y



Unit with internal lighting with battery-powered RGBW LED technology. Includes charger and remote control for switching colors and charger. Available only in matte ice white finish.

RGBW LED DMX BATTERY Ref. 65019DY

VONDOM



Unit with internal lighting with RGBW LED technology and remote control unit for switching colors. Also controlled by DMX-1024 (wireless), enabling communication between one or more products simultaneously via the DMX transmitter (not included). There are two options to choose from: Professional XLR DMX and Home WIFI DMX. (Remote control included).

Ambients

