

# CAP INSTALL GUIDE FOR NEXT GEN RANGER











Un-bolt and remove the sports bar. This will leave the mounting brackets still attached to the tub.



Create an access hole to unbolt the brackets. This method does not require the tub-liner to be removed.



Using the access hole remove the bolts from the brackets.



Using a lever or flat screw driver unclip the plastic tub rail exposing the bracket and bolts. Take care not to scratch the paint. Use a cloth as a buffer.



Use a (T-40) torque key to remove the bolts from the brackets. Remove the bracket. These parts are not required



Re-fit the plastic tub rails by clipping them back into position. Pack the space with a rubber spacer.



Unclip the plastic tab.



Pack the plastic tub rails with the rubber blocks as pictured. There are 4 per side. Once Complete refit the caps.



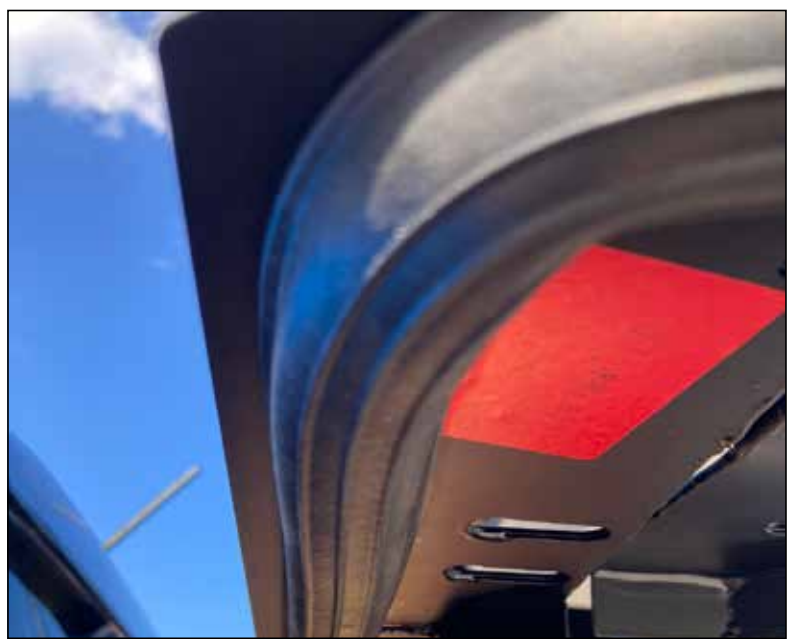
Position the foam waterproofing strip along the front edge of the tub. Next silicone & seal any gaps, holes or seams.



Install the 4 Mounting brackets. These will fit over the factory tub-liner. The Front bolt hole on the front brackets might need to be elongated upwards to gain sufficient sealing pressure



Use tape to seal factory holes in the tub.



Position the rubber 10mm from the front edge of the canopy. This will align it with the foam seal positioned across the tub.



Reference photo for positioning of the canopy



Reference photo for positioning of the canopy



Reference photo for positioning of the canopy



Power supply for rear brake light can be gained via the connection in the tailgate. No T harness supplied must be hardwired in.

## J-BRACE INFORMATION

The information below is from page 108 from the Ford Manual.

This part is installed under the tub and is designed to brace the load bin.

The J-brace does not connect to the canopy.

Part Number: AMN1WJ27726AA Ford Licensed Accessory Part

Cost \$160 + GST

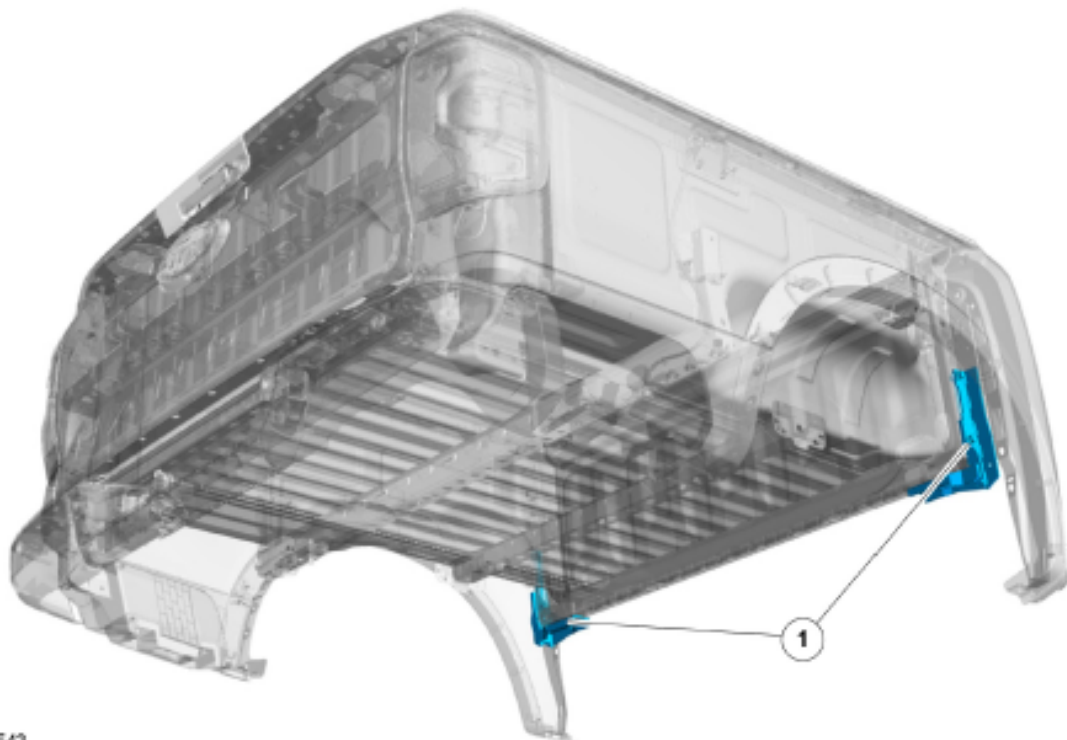
Please request your car dealer or the customers car dealer to install the J-Brace.

### Load Box Reinforcement Brackets

**WARNING: Make sure that all cargo loads are properly balanced and secured.**

**CAUTION: To support the structural integrity of the load box when a canopy is fitted, Ford recommends the installation of load box reinforcement brackets. Load box reinforcement brackets are available as a Ford Licensed Accessory.**

### Load Box Reinforcement Bracket Location



E390543

These brackets have been developed by Ford to brace the floor to the wall of the load box to ensure durability performance of the load box is maintained with the installation of a Ford Licenced Accessory canopy.

Ford also makes available these load box reinforcement brackets as a Ford Licensed Accessory (part number AMN1WJ27726AA) that can be purchased from any authorised Ford Dealer. Please note that these reinforcement brackets have been specifically designed for certain Ford Licenced Accessory Canopies and their suitability for use with any aftermarket (non Ford Licenced Accessory) canopy will need to be determined by the aftermarket canopy manufacturer or supplier.

Responsibility for the appropriate use of these brackets in a vehicle which is modified by a body builder or with an alternate accessory manufacturer's products, remains with that party. It is the vehicle modifier's responsibility to ensure that the modification is carried out in such a way as to ensure that durability of the load box is maintained.

Contact your National Sales Agent or your local Ford Dealer for information on the supply and installation of the reinforcement brackets.