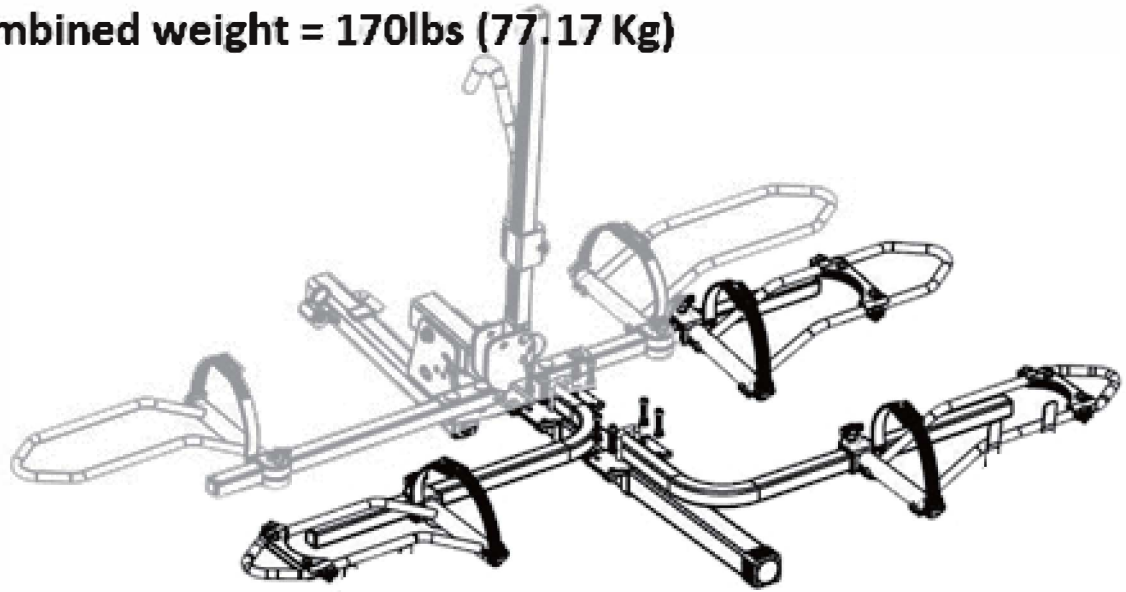


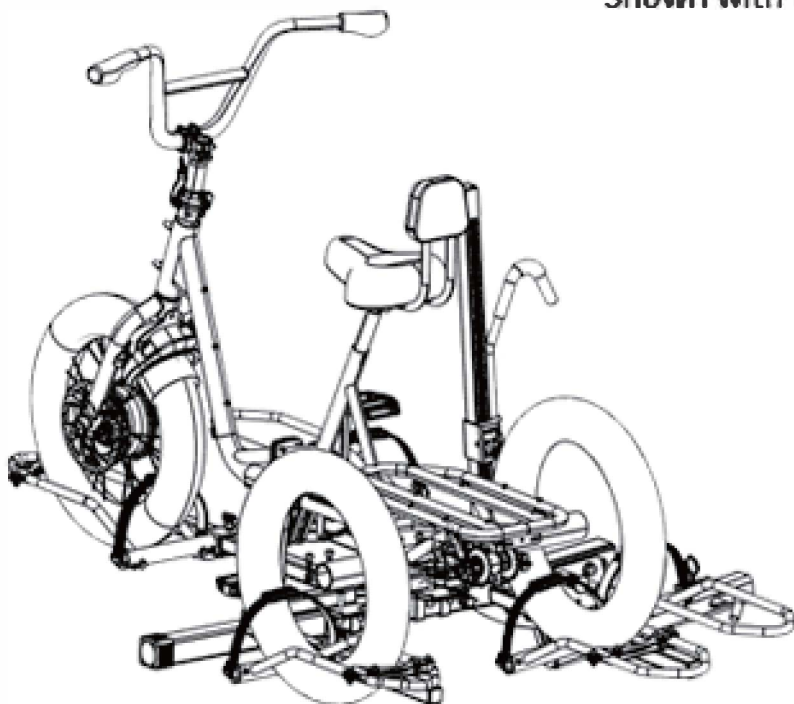
Hollywood Racks TRK-E20 Trike Adapter Instructions

For use with Hollywood Racks Sportrider Model HR1500 ONLY

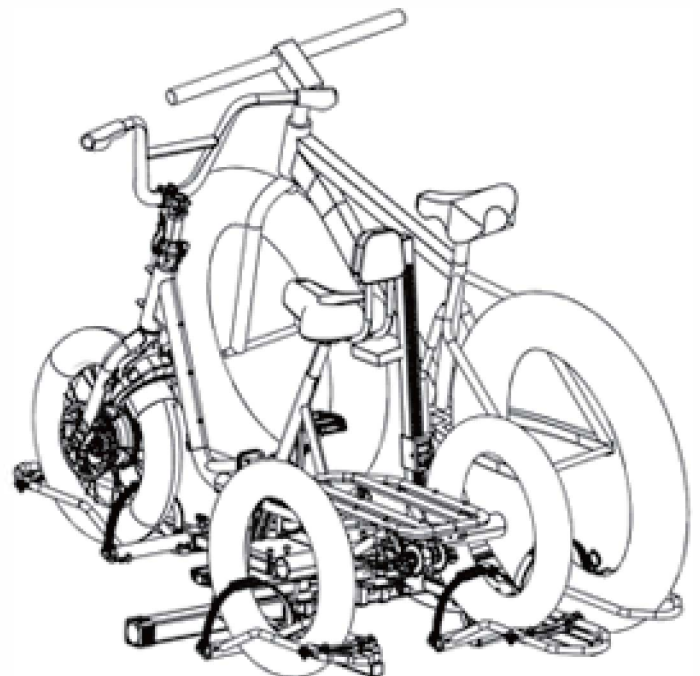
- For use on 2" (Class III) hitches only. Do not use a 1-1/4" - 2" Adapter
- Not to be used on any RV, travel trailer, 5th wheel or towed vehicle
- Not to be used with any hitch extender
- Maximum weight capacity for E-Trike = 90 lbs (40.80 Kg)
- Maximum weight capacity for E-Bike = 80 lbs (36.37 Kg)
- Maximum combined weight = 170lbs (77.17 Kg)



Shown with Model HR1500

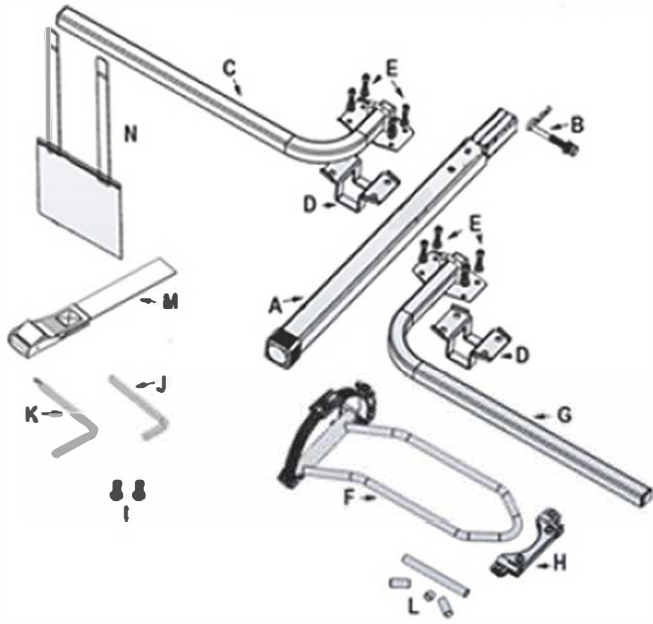


Shown with E-Trike only



Shown with E-Trike plus E-Bike

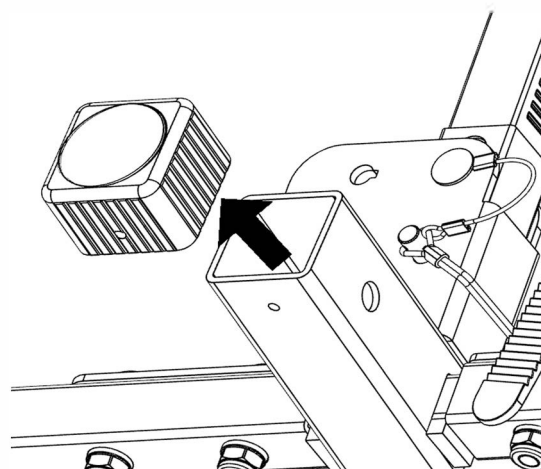
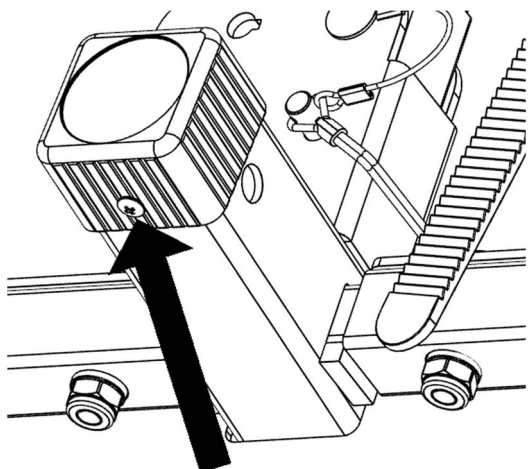
Parts List



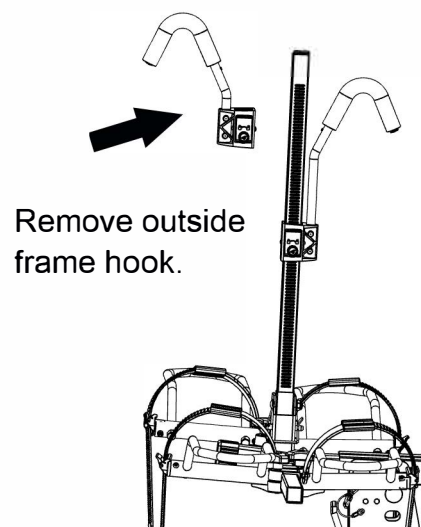
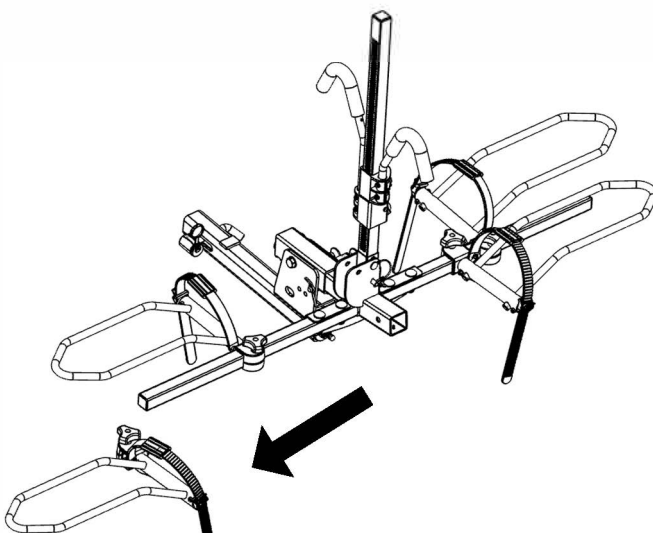
ID	IMAGE	NAME	QTY
F		REAR WHEEL HOLDER	1
G		REAR WHEEL SUPPORT TUBE	1
H		SMALL WHEEL ADAPTER	3
I		6mm SCREWS & WASHERS	2
J		6mm HEX KEY	1

ID	IMAGE	NAME	QTY				
A		MAIN BEAM	1	K		PHILLIPS AND 5mm HEX KEY COMBO TOOL	1
B		1/2-13 BOLT, WASHERS, & CLIP	1	L		REFLECTIVE STICKER SET	2
C		FRONT WHEEL SUPPORT TUBE	1	M		TIE DOWN SAFETY STRAP	2
D		MAIN BEAM CLAMP	2	N		RED SAFETY FLAG	2
E		8 X 25mm BOLT & WASHERS	8				

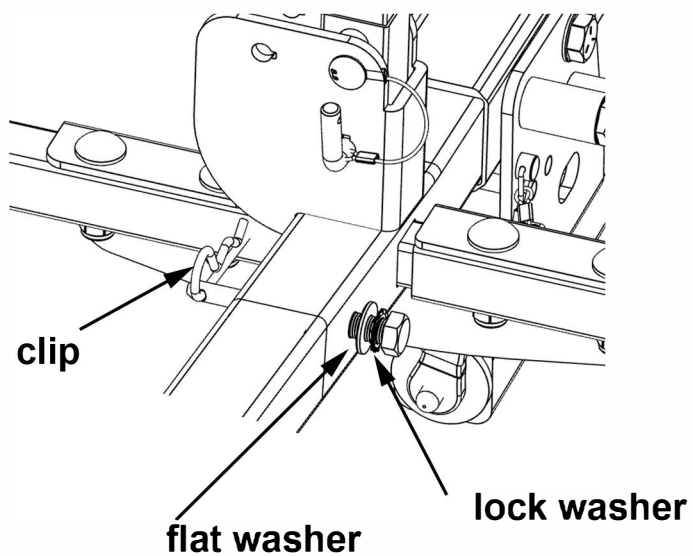
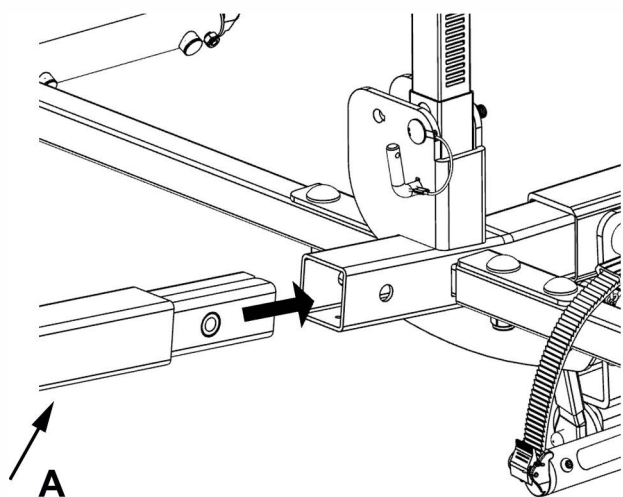
Step 1: Unscrew the screw at the bottom of the reflective end cap on the HR1500 and pull off the cap.



Remove the left side wheel holder (outside wheel holder from the driver's side of the rack).



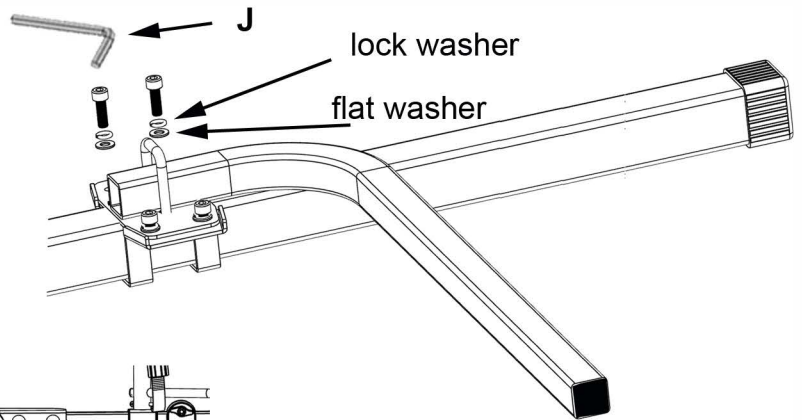
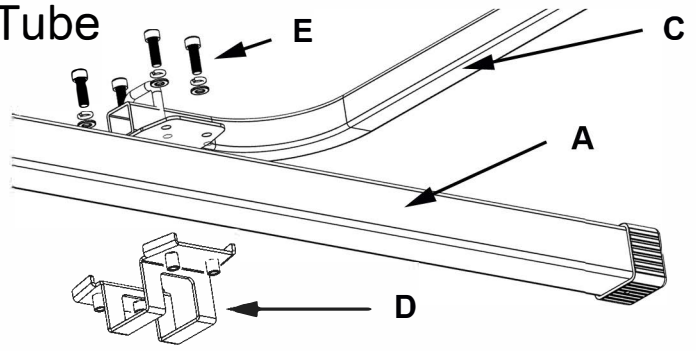
Step 2: Insert Main beam (part A) into the end of the HR1500 where the reflective end cap was removed. Install the 1/2-13 bolt (part B) with washers using a 19mm or 3/4" wrench. Secure with included clip



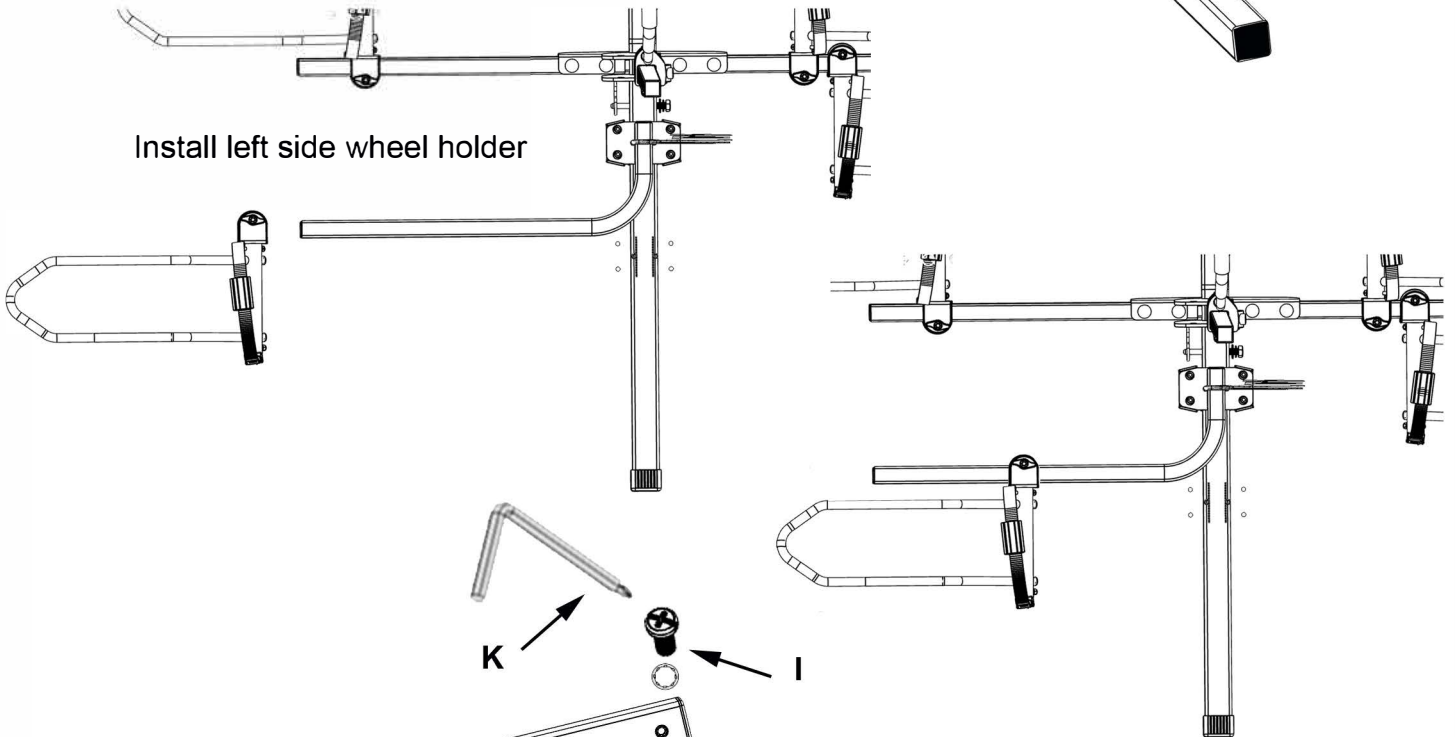
Step 3: Front Wheel Support Tube

Press clamp (D) to the underside of the main beam. Align the front wheel support tube (c) with the clamp. The holes should be aligned, forming a "clam shell".

Insert the bolts and washers (E) into the threaded fasteners of the clamp until they are snug. Do not tighten the bolts as the final location of the front wheel support needs to be determined prior to tightening.

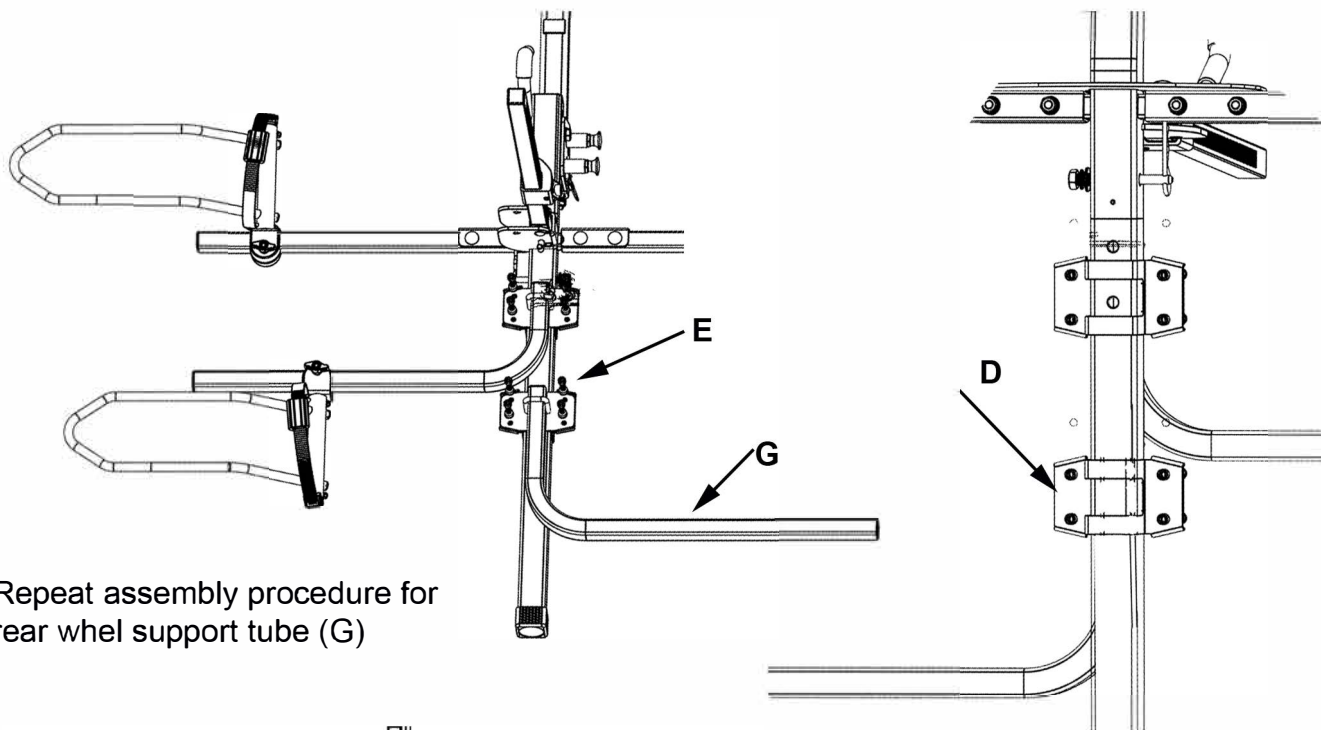


Install left side wheel holder

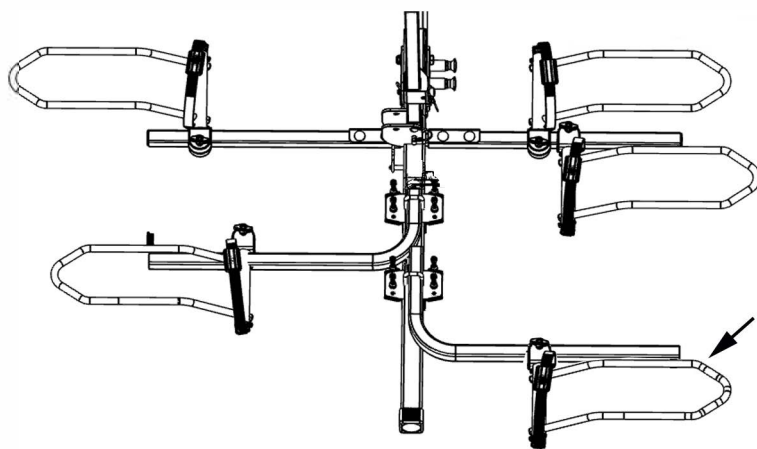


Install the 6mm screw and washer (I) to the bottom of the front wheel support tube using tool (K)

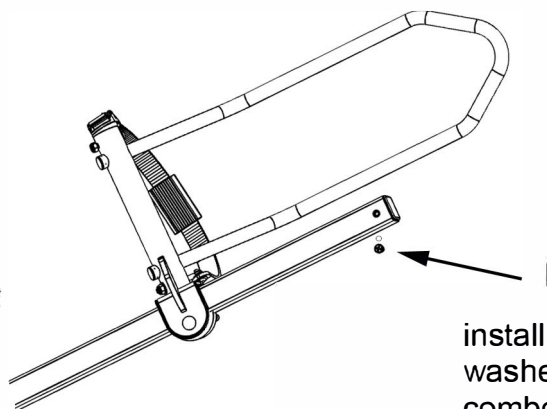
Step 4: Install Rear Wheel Support Tube



Repeat assembly procedure for rear wheel support tube (G)

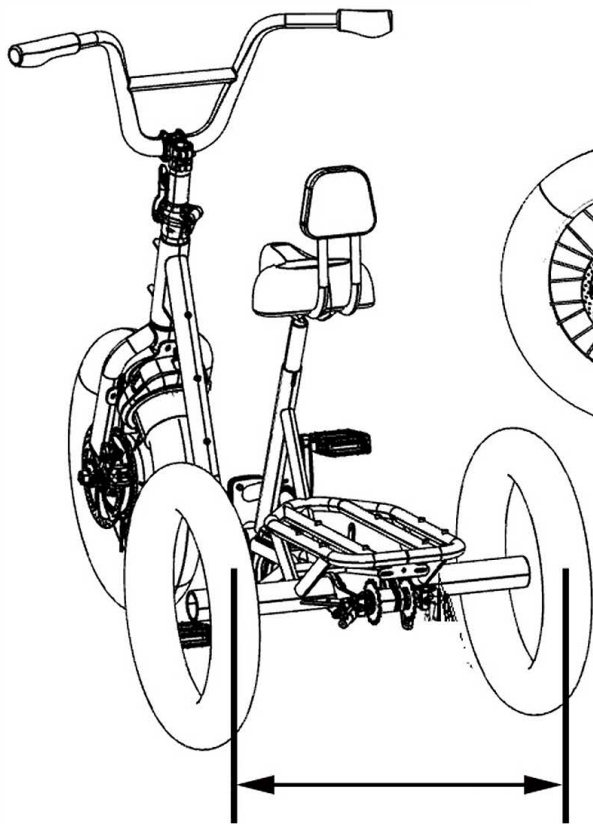


install additional rear wheel holder (F)

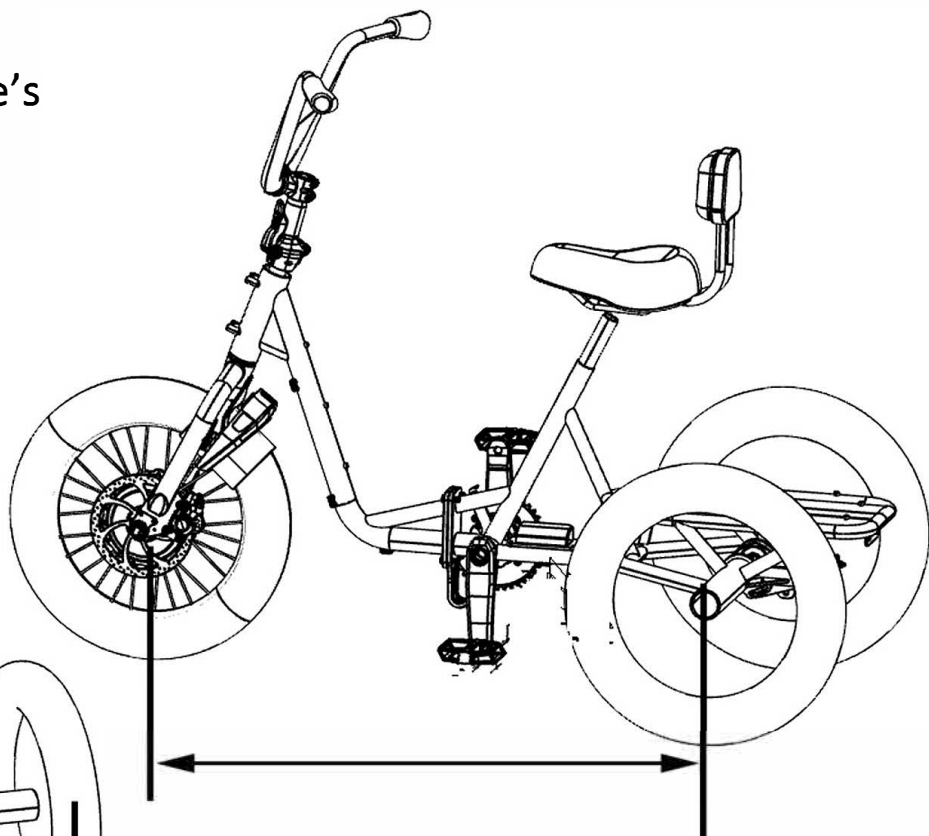


install 6mm screw and washer (I). Use Phillips combo tool (K)

Step 5: Measure the trike's wheel base and width



The Trike's width is the distance between the **center** of the rear tires (NOT the outside of the tires)

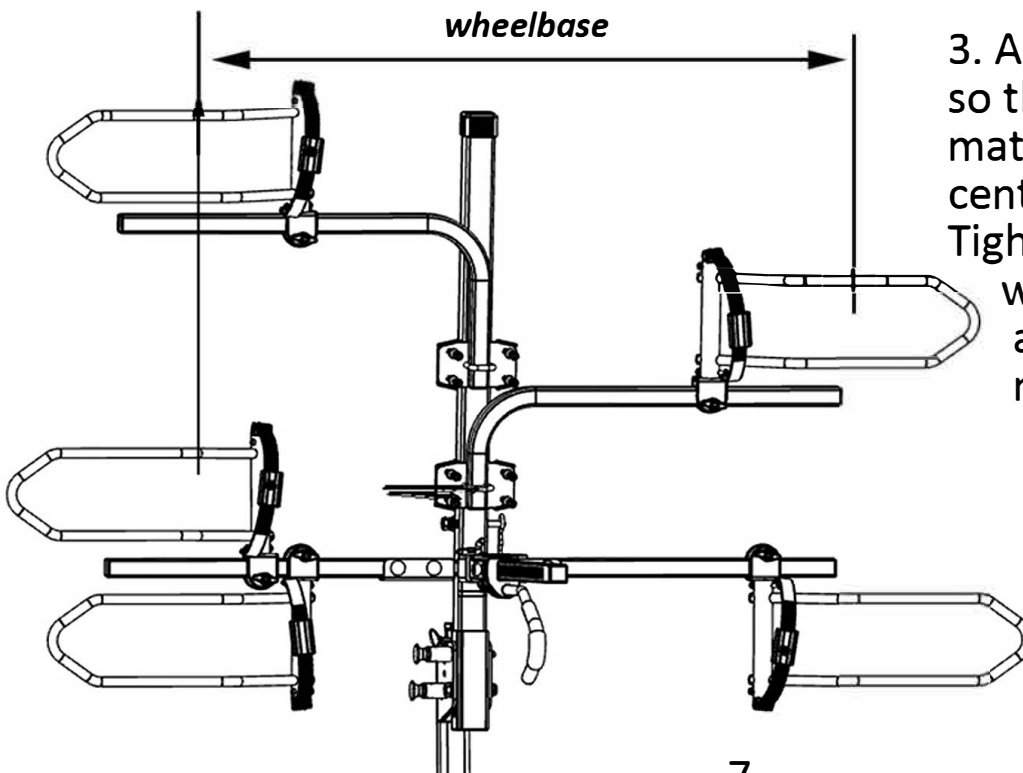
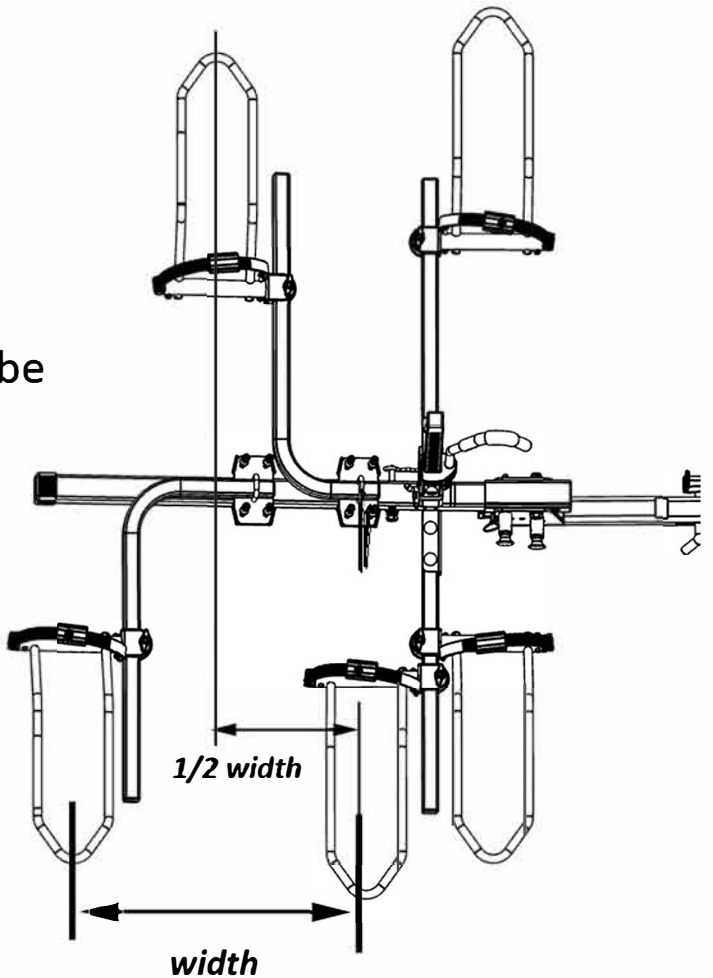
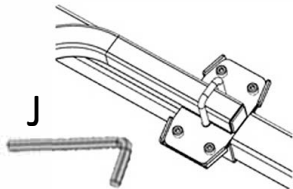


The Trike's wheelbase is the distance between the center of the front and rear wheel hubs

Step 6: Adjust and tighten trike's wheel holder positions

Tip: *If carrying an E-Bike and trike, install the E-bike first to determine the E-bike's best wheel holder positions*

1. Adjust the rear wheel support tube as shown. Tighten with hex key (J.)
2. Adjust the front wheel support tube so that the center line of the wheel holder is halfway between the rear wheel holders. Tighten with hex key (J.)

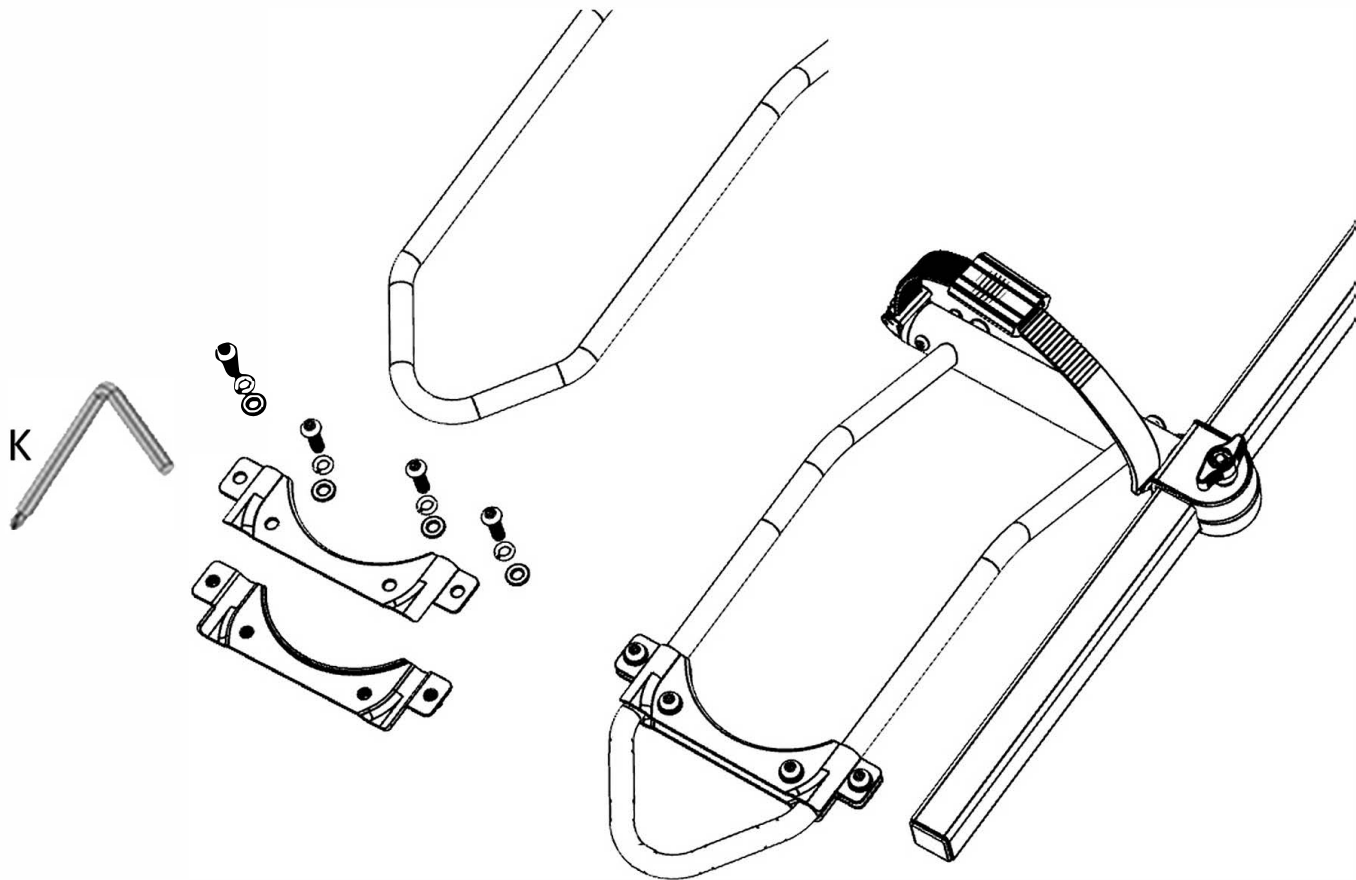


3. Adjust wheel holders so that the wheel base matches the approximate center of the wheel holders. Tighten with knob on the wheel holder. Final adjustments should be made after installing the trike.

Step 7: Small wheel adapters

Check the tire size on your trike. If the diameter is less than 20", you will need to install the small wheel adapters. If the tire is 20" diameter and the width is less than 2", it is recommended to use the small wheel adapters.

After installing the small wheel adapter to the wheel holder, tighten securely using tool K.

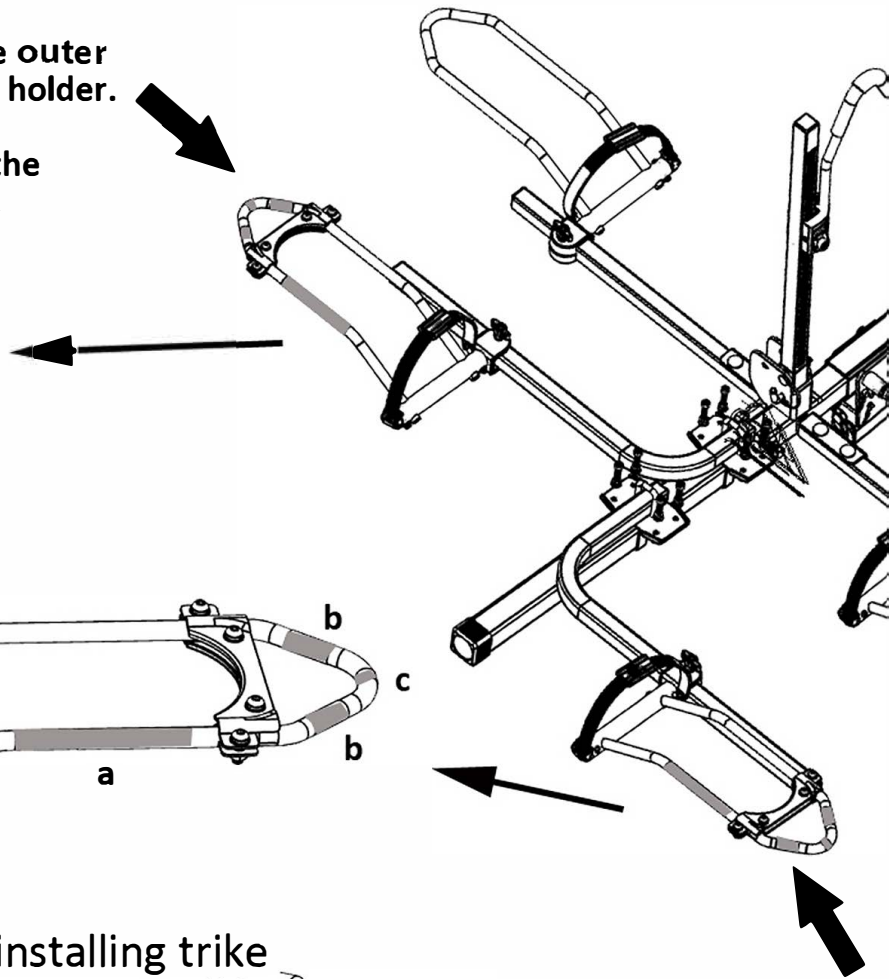
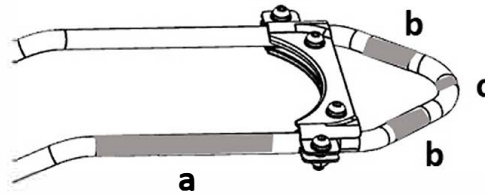
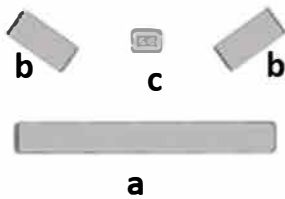
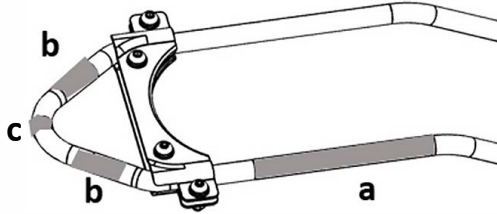


Position the small wheel adapter as shown above, on the "pointed" end of the wheel holder. Install the bolt and washers and tighten securely.

Step 8: Install self adhesive reflectors on wheel holders

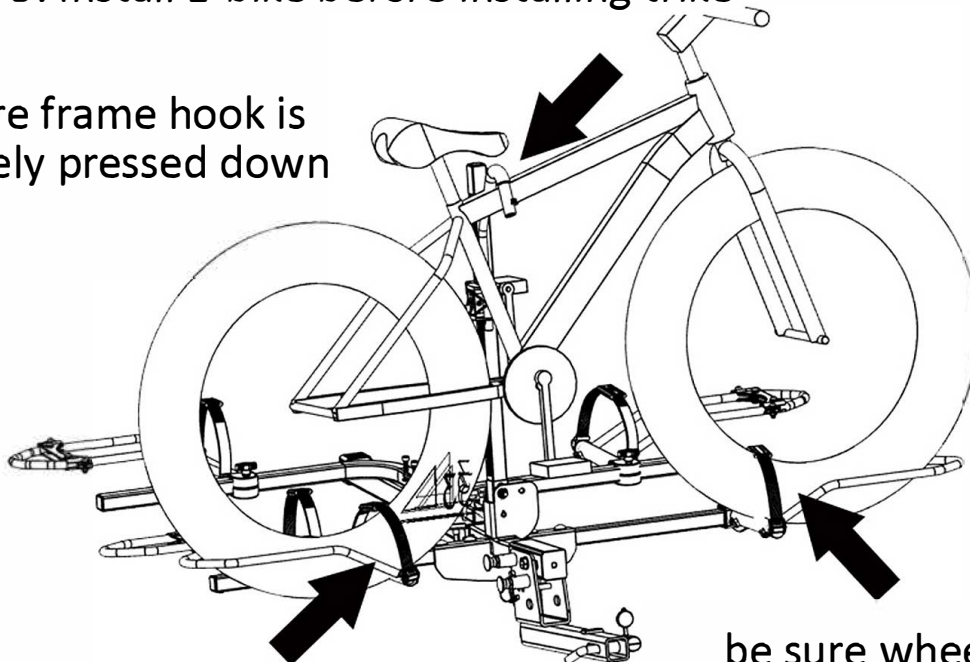
1. Install the reflective tape on the outer rear wheel holder and front wheel holder.

2. Peel back the paper side of the reflector tape and apply as shown.



Step 9: Install E-bike before installing trike

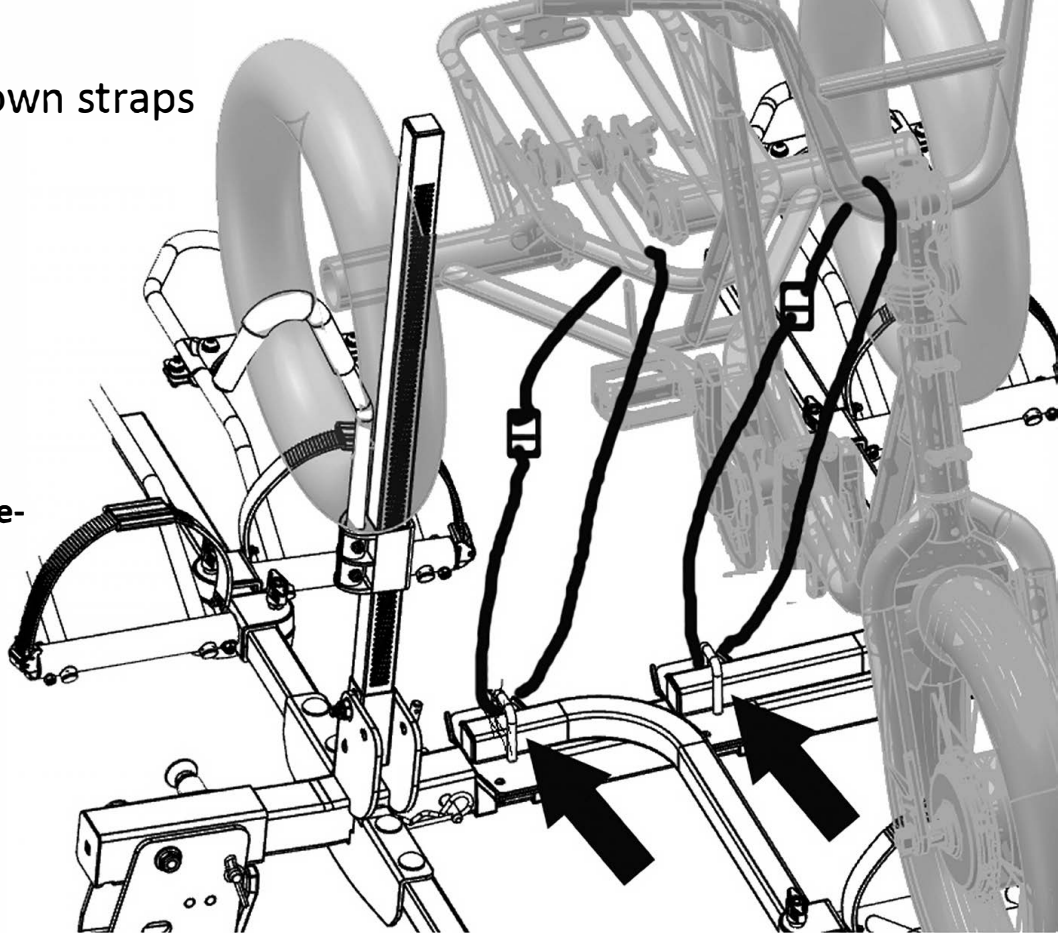
Be sure frame hook is securely pressed down



be sure wheel holder ratchet straps are fastened and tight

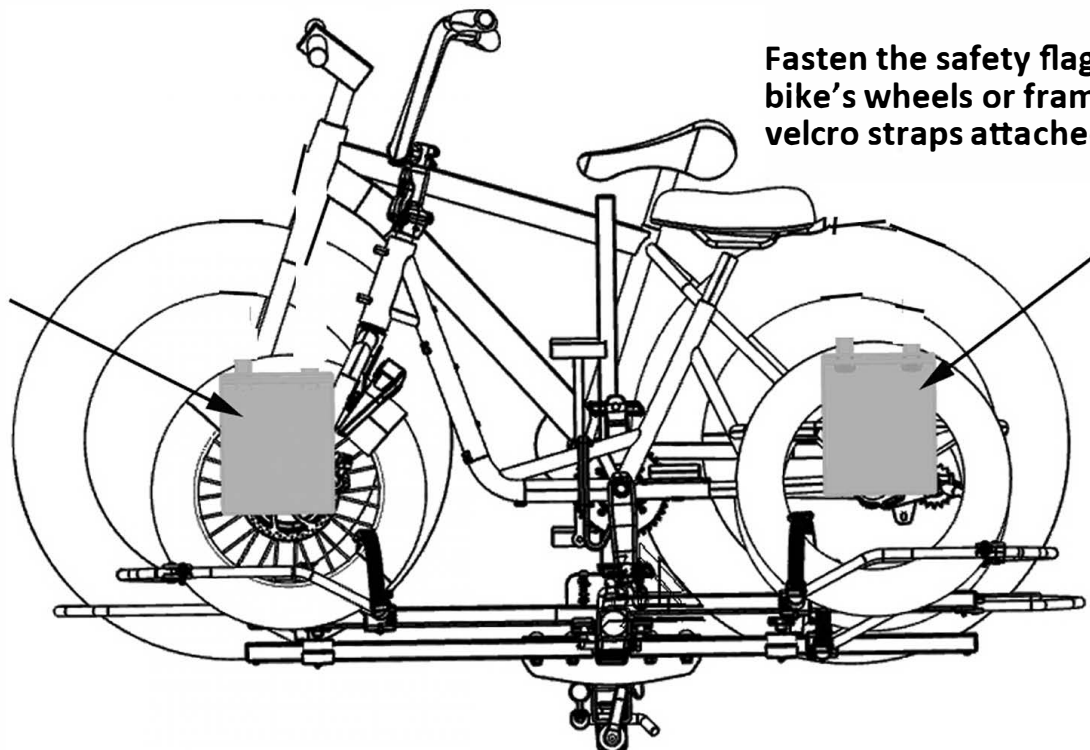
Step 11: Install tie down straps

1. Locate the safety tie-down straps (M)
2. Locate the welded tie-down loops on the wheel support tubes
3. Route and secure the tie-down straps from the E-trike's frame and handle-bars to the weld loops.

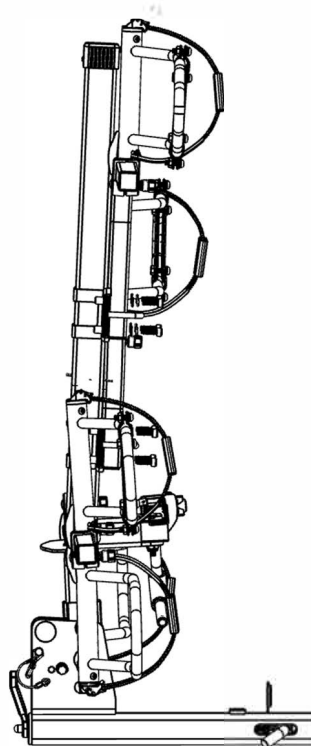


Step 12: Attach safety flags

Fasten the safety flags (N) to the bike's wheels or frame with the velcro straps attached to the flags



The HR1500 with trike adapter will fold flat against the back of the vehicle. Please refer to the HR1500 instructions



Limited Lifetime Warranty (effective January 1, 2008):

Hollywood Racks will warrant its car racks and accessories during the time that an original retail purchaser owns the product subject to the exclusions and limitations of this warranty. Hollywood Racks will remedy defects in materials and workmanship by repairing or replacing (at its option) a defective part without charge for labor or parts. Hollywood Racks may elect (at its option) to issue a refund equal to the purchase price paid for the product. This warranty does not cover problems caused by normal wear and tear including (but not limited to) weather, scratches, dents, rust, accidents, unlawful vehicle operation, misuse, abuse, neglect, theft, unauthorized modifications, or unauthorized repair. No warranty is given for defects resulting in incorrect assembly, incorrect installation onto the vehicle, installation on a “no fit” vehicle, incorrect attachment of bicycles onto the rack, or overloading of the rack’s weight restrictions. This warranty terminates if the original retail purchaser transfers the product to any other person. If a product is believed to be defective, the original retail purchaser should contact either the original retailer or Hollywood Racks directly at 800-747-4085 or at info@hollywoodracks.com

Disclaimer of Liability:

Repair or replacement of a defective product or the issuance of a refund or credit (as determined by Hollywood Racks) is a purchaser’s exclusive remedy under this warranty. Damage to a purchaser’s vehicle, cargo, bicycles and or to any other person is excluded. This warranty is expressly made in lieu of any and all other express warranties, whether oral or written. Hollywood Racks shall not be liable for any direct, indirect, consequential, incidental, special, punitive or any other damages in connection with the purchase, use or handling of this product. Some states do not allow the exclusion or limitation of consequential or incidental damages and the above limitation may not apply to you. This warranty gives you specific legal rights and you have other rights, which vary from state to state.

Hollywood Racks

12812 South Spring Street Los Angeles, CA 90061 (800) 747-4085 (310) 516-8600 Fax (310) 516-8955
Customer Service Hours: 8:00 AM- 3:00 PM PST www.hollywoodracks.com info@hollywoodracks.com
Made in China

Model TRK-E20 May 2023 V1