

Tools Required: Adjustable wrench or 7/8" wrench

Contents:

U-Bolt for 2" hitches (qty = one)

U-Bolt for 1 1/4" hitches (qty = one)

Clamp Bar (qty = one)

Split Washers (qty = two)

Flat Washers (qty = two)

1/2-13 Hex Nuts (qty = four)

7/16-14 Hex Nuts (qty= four)

Note: This product requires a flange on your hitch

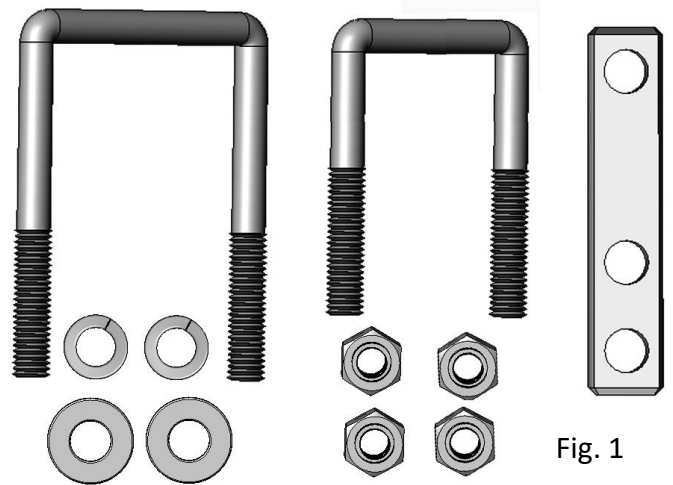


Fig. 1

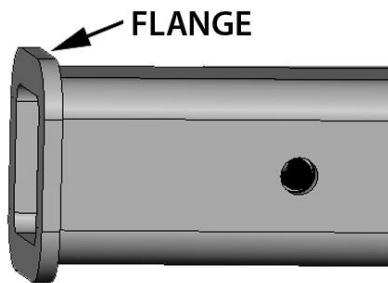


Fig. 2

1. Check the package contents per Fig. 1.
2. Per Fig. 2, please note that this product requires that your hitch has a flange.

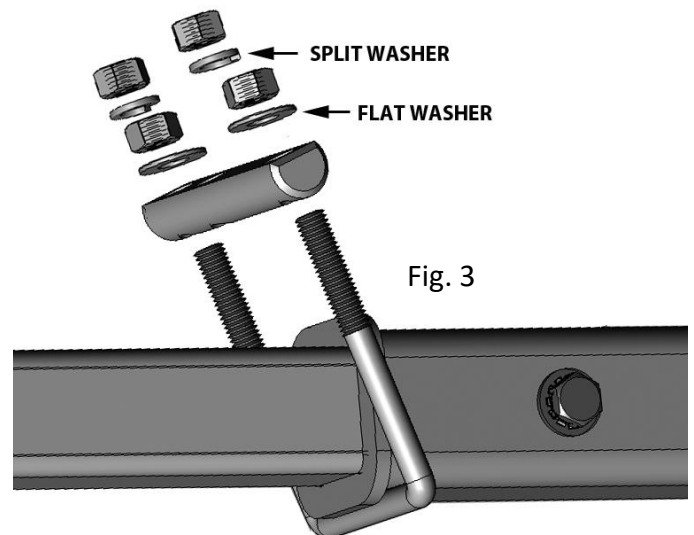


Fig. 3

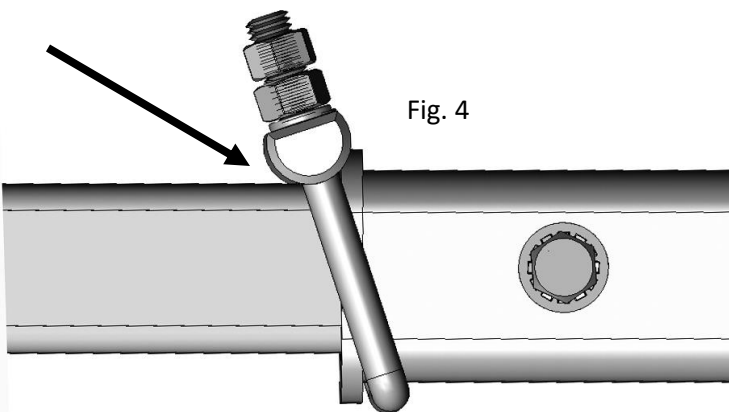


Fig. 4

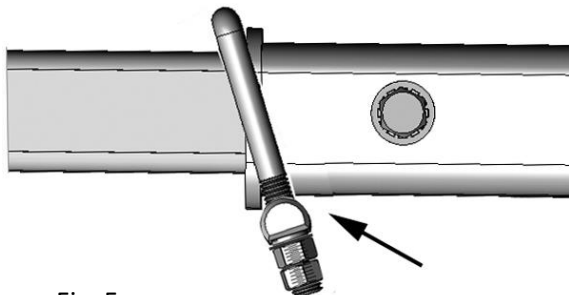


Fig. 5

Note: The hitch tightener can be installed with the clamp bar below the hitch and behind the flange per Fig. 5.

3. Place the U-bolt below the receiver hitch and behind the flange per Fig. 3.

4. Slide the clamp bar onto the legs of the U-bolt. Rounded surface of the clamp bar must be in contact with the flange and accessory tube per Fig. 4.

5. Install the flat washers and thread a nut onto both legs of the U-bolt. Tighten the nuts securely so there is equal pressure on the clamp bar.

6. Install the split washers and thread the second set of nuts onto the legs of the U-bolt. Tighten securely, max. torque 25 ft-lbs.