

JOET

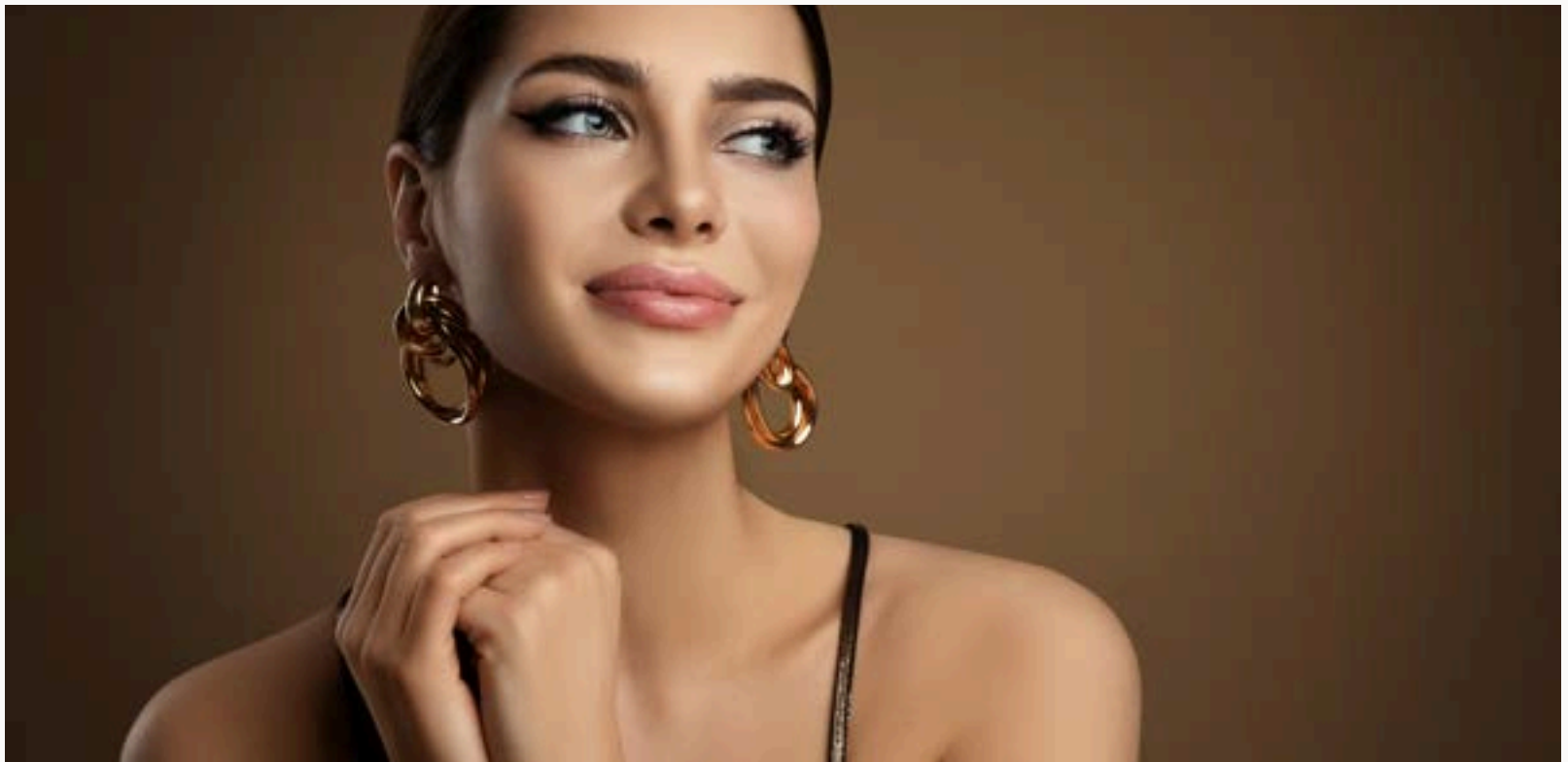
JOY IN EVERY PIECE

Jewelry for Everyday Luxury



www.joetjewelry.com

Welcome to JOET



JOET Jewelry was founded with the vision of creating quality jewelry that delivers elegance and sophistication for everyday wear. We celebrate the understated elegance in jewelry; crafting timeless pieces designed for lasting beauty and effortless wear. We believe that beautiful, high-quality jewelry should be affordable. We are proud to support breast cancer research and awareness through our dedicated Crusader collection.



Our Materials

We carefully select each material for both beauty and durability, so you can cherish your pieces for years to come. Our main materials are:

Gold Vermeil

This is a high-quality plating process where a thick layer (2.5 microns) of 18k gold is electroplated onto sterling silver. This creates a luxurious and long-lasting finish that closely resembles solid gold.

Sterling Silver 925

Sterling silver is a classic and timeless choice for jewelry. It's known for its lustrous shine and versatility, making it perfect for everyday wear.

Stainless Steel

Stainless steel is an incredibly strong and durable metal alloy, known for its resistance to corrosion. It is tarnish-resistant, hypoallergenic, water-resistant, and long-lasting.

www.joetjewelry.com



Contents

1
Necklaces



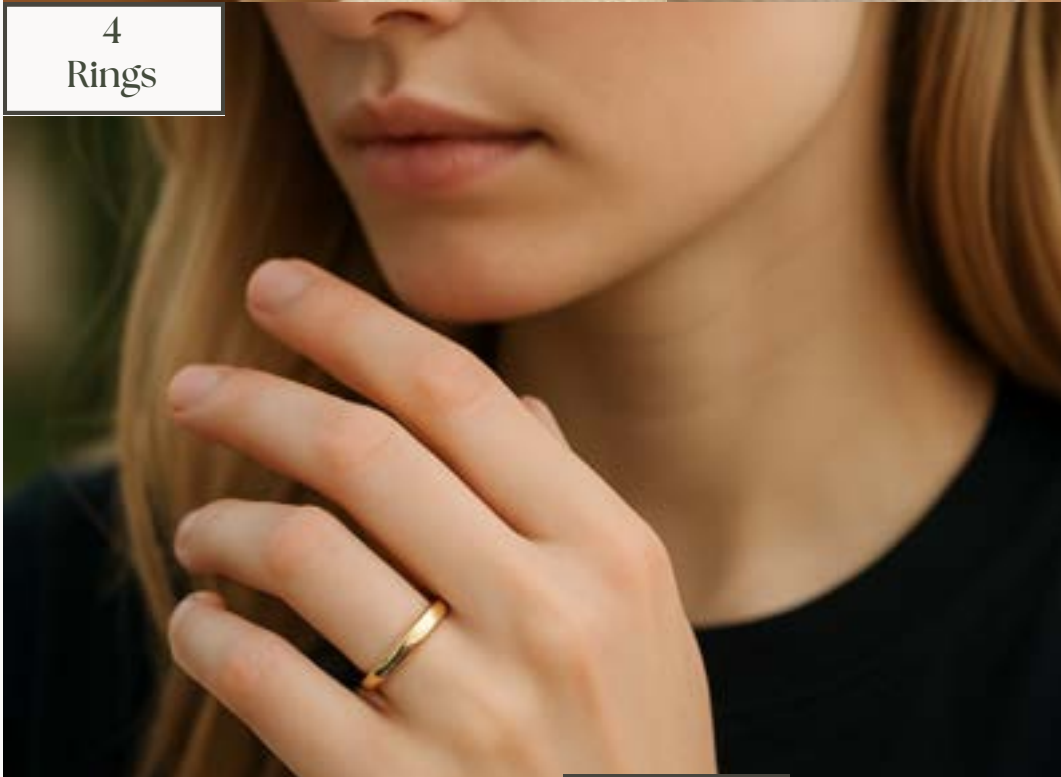
2
Bracelets



3
Earrings



4
Rings



5
Men's



6
Bridal



7
BOLD



8
Crusader



Necklaces

Robin Pave Cluster Charm Necklace

This elegant necklace boasts five high-quality clusters, adorned with stunning zircon stones in a pave setting. L: 20" (18+2). Available in sterling silver (#0-120; \$69) and gold vermeil (#0-138; \$79).



A



A - **Darci Lariat Pave Necklace.** Experience effortless style adorned with seven high-grade simulated diamonds meticulously set on a dainty link chain. L: 20" (18 + 2).
Available in sterling silver (#0-119; \$59) and gold vermeil (#0-118; \$69).

B



C



Ella Star Pendant Necklace.

Illuminate your day with this elegant and bright star necklace, featuring a premium central simulated pave diamond. L: 20".

B - #0-121, gold vermeil; \$79

C - #0-122, sterling silver; \$69

www.joetjewelry.com





JOET Box Chain Necklace

#O-125, gold vermeil

This elegant and dainty box chain is perfect for stacking or wearing solo or dressed up with a stunning pendant charm. L: 17.5".
\$49 gold vermeil, \$44 sterling silver

JOET Box Chain Necklace

#O-126, sterling silver



JOET Cable Chain Necklace

#O-130, gold vermeil

Experience simple luxury and sophistication with our dainty cable chain. Ideal for layering or wearing alone. L: 19.5".
\$49 gold vermeil, \$44 sterling silver

JOET Cable Chain Necklace

#O-129, sterling silver



www.joetjewelry.com



A



A - **JOET Paperclip Necklace** . Elevate your look with our fine Italian handcrafted paperclip necklace. Perfect for layering or wearing alone.
L: 18".

B



C



JOET Paperclip Necklace

B - #0-123, gold vermeil; \$139

C- #0-124, sterling silver; \$109

www.joetjewelry.com





A - **Amara Infinity Necklace.**

#0-134, sterling silver; L: 19"; \$69

B- **Rienne Lucky Horseshoe Necklace**

##0-136, sterling silver; L: 18"; \$59

C - **Diyanna Lariat Pendant Necklace**

#0-143, sterling silver; L: 18"(16+2); \$64

D - **Mona Simulated Diamond Curved Bar Necklace**

#0-142, sterling silver; L: 18"; \$59

www.joetjewelry.com





Leah Bezel Pendant Necklace

#O-144, gold vermeil

Elegant bezel-set necklace showcasing a sparkling simulated diamond. L: 18". \$84

Azure Simulated Sapphire Necklace

#O-127, sterling silver

Elegant lab-created blue sapphire pendant with high-quality zircon stones. L: 17.5" (15.5+ 2). \$69



Evil Eye Pendant Necklace

#O-137, gold vermeil

Premium simulated pave diamond, incorporating the ancient tradition of warding off negative energy. L: 17.7". \$84

Elodie Lavender Heart Pendant Necklace

#O-141, sterling silver

Featuring a heart pendant with lavender and simulated pave diamonds. L: 18" (16+ 2). \$59



www.joetjewelry.com



A



A - Italian Herringbone Chain Necklace, 20"

Italian crafted herringbone necklace. You can wear it alone or layer it for a bold statement. Lays flat.

Available in gold vermeil (#0-135; \$129).

B



B - Maya Tennis Choker Necklace, 16"

This classic design sparkles with premium simulated diamonds, creating a stunning piece.

#0-133, sterling silver; \$99

www.joetjewelry.com



A



A - JOET Figaro Diamond-Cut Chain Necklace, 16"

Refined diamond-cut Figaro choker chain, perfect for layering or wearing solo.

Available in gold vermeil (#0-139; \$69).



www.joetjewelry.com





A - Anita Shell Necklace.

#0-115, shell and 18K gold-plated;
L: 19". \$34*

B- Gracie Glass Pearl Necklace

#0-111, glass + 18K gold-plated; \$39*
#0-112, glass + silver-plated; \$39*
L: 18" (15.5 + 2.5)

C - Scarlet Coral Necklace

#0-114, Bamboo + 18K gold-plated; \$39*
L: 19" (16+3)

*Handmade in the USA. Made to Order.

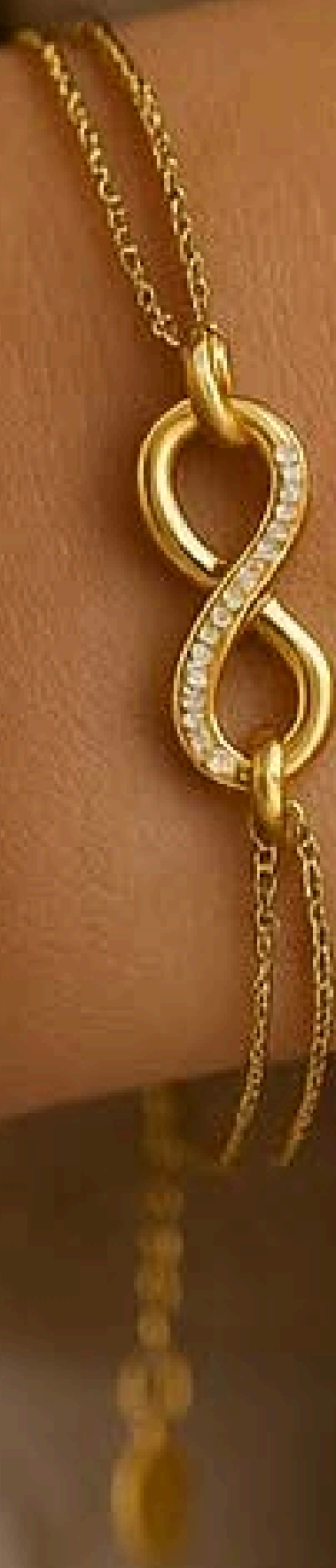
www.joetjewelry.com



Bracelets

Amara Infinity Bracelet

This elegant pave bracelet centers around an infinity symbol made with high-quality zircon stones. L: 8" (6.5+ 1.5). Available in sterling silver (#1-123; \$59) and gold vermeil (#1-124; \$69).





Aurelia 4mm Gold Bead Bracelet

#1-120, gold vermeil

A versatile and effortless chic gold bracelet. Pairs well in a stack or shines just as bright alone. Available in 2 sizes: 7" (\$74) and 7.5" (\$74).



Margot Shell and Gold Bracelet

#1-113, 18K gold-plated

Make a statement with this natural shell bead bracelet accentuated by gold-filled beads.

L: 8.5" (7+ 1.5).

Handmade in the USA. Made to Order. \$29

Scarlet Coral Bamboo Bracelet

#1-111, 18K gold-plated

Make a statement with this striking genuine red coral bamboo bead bracelet. L: 8.5" (7+ 1.5).

Handmade in the USA. Made to Order. \$29



www.joetjewelry.com



A



A - Maya Tennis Bracelet

This timeless tennis design shimmers with premium simulated diamonds, making this delicate 2mm bracelet a beauty. L: 8.5" (6.5+ 2)

B



Great for solo wear or add to an elegant stack.

A - #1-116, gold vermeil; \$99

B- #1-117, sterling silver; \$89

www.joetjewelry.com





A - Demi Tennis Bracelet, Paperclip chain

#1-114, gold vermeil, L: 8.5" (7 + 1.5); \$69

#1-115, sterling silver; \$59

B- Freshwater Pearl Slider Bracelet

#1-125, pearl + 18K-gold plated stainless steel, L: 7.87"; \$44

C - Caia Blue Infinity Bracelet

#1-122, sterling silver; L: 8" (6+ 2); \$59

D - Layna Evil Eye Charm Bracelet

#1-118, gold vermeil; L: 8.5" (6.5 + 2); \$69

#1-119, sterling silver; \$59

E - Quinn 3mm Tennis Bracelet

#1-126, sterling silver; \$99 (7" or 7.5")

www.joetjewelry.com



A



A - Anabelle Freshwater Pearl Bracelet Necklace

This classic bracelet features genuine freshwater pearls and gold in a timeless design. L: 9.5" (7.5 + 2" slider).

Available in gold vermeil #1-121; \$69.

B



C



Stainless Steel Cuff

Crafted with durable polished stainless steel, this cuff adds a touch of sophistication to any attire. Hypoallergenic and tarnish-resistant.

Medium size width is 59mm, adjustable.

B - #1-128, stainless steel (silver); \$44

C - #1-127, 18K gold-plated stainless steel; \$49

www.joetjewelry.com





A - Mera **Simulated Diamond Bow Bracelet**

This simple and dainty bracelet shimmers with premium simulated diamonds interlocking at the center. L: 8.5" (6.5+ 2).

#1-129, sterling silver; \$59

www.joetjewelry.com





Earrings

Jenna Freshwater Pearl Drop Earrings

Elegance, simplicity, and sophistication meet in these genuine freshwater pearl drop earrings. L: 2.6 cm.

Available in gold vermeil (#2-125; \$69).

A



A - Aliza U-shaped Huggies

Simply elegant. These U-shaped huggies are adorned with exquisite zircon stones in a stunning pave setting. L: 1.4 cm
Available in sterling silver (#2-114; \$54) and gold vermeil (#2-113; \$59).

B



C



Darci Tennis Tassel Earrings

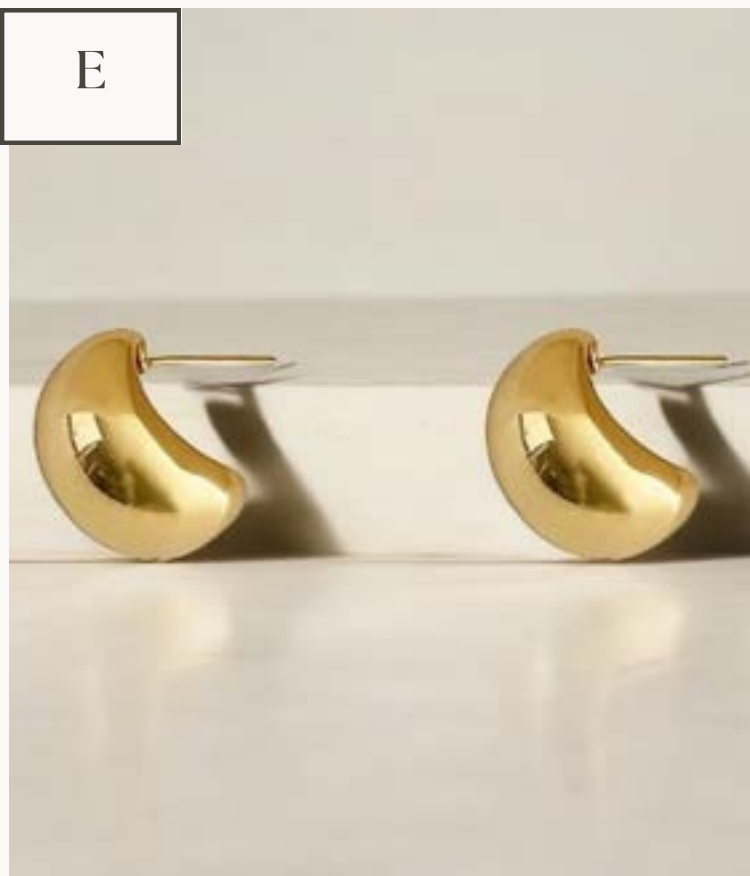
These elegant earrings feature five expertly cut pave simulated diamonds in a tassel formation. L: 1.5 cm

B - #2-111, gold vermeil; \$59

C- #2-112, sterling silver; \$54

www.joetjewelry.com





A - **Stella Star Stud Earrings**

#2-115, gold vermeil, L: 0.7 cm; \$54

#2-116, sterling silver; \$49

B- **Dalia Bow Earring Studs**

#2-129, gold vermeil, L: 0.9 cm; \$54

#2-130, sterling silver; \$49

C - **Keira Knot Dangle Earrings**

#2-133, gold vermeil, L: 2.1 cm; \$69

#2-134, sterling silver; \$59

D - **Daphne Classic Stud Earrings**

#2-126, gold vermeil; L: 0.6 cm; \$49

#2-127, sterling silver; \$44

E - **Farah Chunky Huggie Earrings**

#2-121, gold vermeil, L: 1.4 cm; \$79

#2-122, sterling silver; \$64



Leah Bezel Stud Earrings

These elegant bezel-set stud earrings showcase a sparkling simulated diamond that shines with perfection. L: 0.5 cm

#2-131, gold vermeil; \$59

#2-132, sterling silver; \$49



Daya Hammered Leaf Earrings

Create a bold and sophisticated look with these hammered leaf earrings with a unique and organic design. L: 2.5 cm

#2-123, gold vermeil; \$79

#2-124, sterling silver; \$69



A



B



C



D



E



A - **Dillon Bolt Drop Earrings**

#2-144, sterling silver; L: 2.6 cm; \$54

B- **Zinnia Simulated Diamond Earrings**

#2-142, sterling silver; L: 2.2 cm; \$54

C - **Ada Cartilage Earring Cuff Clip**

#2-119, gold vermeil; L: 1.2 cm; \$39

#2-120, sterling silver; \$36

D - **Lissa Heartbeat Stud Earrings**

#2-141, sterling silver; L: 1.6 cm; \$49

E - **Edith Rainbow Huggie Tri-Hoop Earrings**

#2-143, sterling silver; L: 1.3 cm; \$54

Rings



A



B



C



D



E



A - **Chloe Rectangular Statement Ring**

#3-120, sterling silver; S: 6-9; \$44

B- **Rienne Horseshoe Ring**

#3-118, sterling silver; S: 6-9; \$44

C - **Ines Eternity Band Ring**

#3-113, sterling silver; adjustable; \$44

D - **Jaime Round Pave Ring**

#3-119, sterling silver; S: 6-9; \$44

E - **Lissa Heartbeat Ring**

#3-121, sterling silver; S: 5-9; \$44

www.joetjewelry.com





C chunky Dome Ring

#3-123, stainless steel

This bold chunky dome ring is a statement piece perfect for any finger. Its ability to be stacked makes it the ultimate minimalist accessory.

Available in sizes 6-9; \$39.



C chunky Dome Ring

#3-122, 18K gold-plated stainless steel

Crafted with gold plated stainless steel, this ring is both beautiful and durable.

Available in sizes 6-9; \$39.



A



B



C



D



E



A - Cora Band Ring

#3-116, sterling silver; S: 5-9; \$44

B - Cora Band Ring

#3-117, gold vermeil; S: 5-9; \$49

C- Matilda Simulated Emerald Ring

#3-124, sterling silver; S: 5,7,9; \$44

D - Zo Open Eternity Ring

#3-111, gold vermeil; adjustable; \$49

#3-112, sterling silver; adjustable; \$44

E - Jana Eternity Band

#3-114, sterling silver; S: 6-9; \$44

#3-115, gold vermeil; S: 6-9; \$49

Men's

Leather and Steel Bracelet

This brown genuine leather bracelet features a unique multi-layer design and secure golden stainless steel magnetic closure. Available in brown leather and 18K gold-plated stainless steel.

#4-122; \$49

A



Stainless Steel Cuff

Elevate your style with this luxurious and versatile polished stainless steel cuff. Its sleek design effortlessly transitions from day to night and adds a touch of sophistication to any attire.

B



C



Stainless Steel Cuff

Available in 3 stylish finishes.

Large size width is 64 mm, adjustable.

A - #4-115, 18K gold-plated stainless steel; \$49

B- #4-116, stainless steel (silver); \$44

C- #4-121, black stainless steel; \$49

www.joetjewelry.com





Tiger Eye Bracelet

Handcrafted and made with genuine 4mm tiger eye beads, this versatile bracelet features natural earthy tones and unique patterns. L: 8.25"

#4-111; \$44

Handmade in the USA. Made to Order



Cuban Link Curb Chain, 20"

Crafted with Italian 925 sterling silver, this micro Cuban link curb chain necklace is a versatile and timeless accessory. L: 20"

#4-117, sterling silver; \$44

#4-118, gold vermeil; \$49



www.joetjewelry.com



A



A - **Diamond-Cut Cuban Link Chain Necklace**

Elegance and confidence intertwine in this Italian-made necklace, featuring impeccably diamond-cut 3mm links. L: 20"

B



Match it with the coordinating diamond-cut bracelet for a luxurious and polished look. Handcrafted in Italy.

A - #4-119, gold vermeil; \$149

B- #4-120, sterling silver; \$99

www.joetjewelry.com



A



Diamond-Cut Cuban Link Bracelet

Simple, elegant, and bold diamond cut Cuban link bracelet with 3mm links. Available in 2 sizes: 8" and 8.5'

B



Handcrafted with Italian 925 silver.

A - #4-114, gold vermeil; \$79

B- #4-113, sterling silver; \$69

www.joetjewelry.com



Bridal

Beautiful wedding and bridal jewelry for treasured memories.

Bulk orders available.

We can customize a piece of jewelry to a certain color.

Contact us today to discuss.

www.joetjewelry.com

A



A - Viola Lab-Created Blue Sapphire Pendant Necklace

Stunning simulated sapphire pendant necklace, adorned with high-quality simulated diamonds for a touch of luxury. L: 18"

#5-119, sterling silver; \$74

B



B - Viola Lab-Created Blue Sapphire Drop Earrings

Beautiful simulated sapphire pendant earrings adorned with premium simulated diamonds. L: 2.8cm.

#5-120, sterling silver; \$69

www.joetjewelry.com



A



A - Mirabel Drop Pendant Earrings

This stunning statement piece is perfect for any special occasion featuring premium simulated diamonds. L: 3.7cm

#5-113, sterling silver; \$69

B



B - Mirabel Drop Pendant Necklace

Elegant statement necklace with premium zircon stones.

#5-114, sterling silver; \$74

www.joetjewelry.com





Lani Simulated Diamond Stud Earrings

#5-122, sterling silver

An elegant and refined pair of studs with premium quality simulated diamonds.

L: 0.9 cm; \$49

Lani Simulated Diamond Pendant Necklace

#5-121, sterling silver

Crafted from genuine sterling silver into an intricate design.

L: 18"; \$59



Eleni Oval Stud Earrings

#5-111 sterling silver

Gorgeous stud earrings, embellished with a dazzling zircon stone that glimmers and dazzles.

L: 0.6cm; \$49

Eleni Pendant Necklace

#5-112, sterling silver

Elegant statement necklace adds a touch of luxury with a central premium simulated diamond.

L: 18" (16+2); \$59





A - Andra Lab-created Emerald Earrings

#5-123, sterling silver; L: 3.6 cm; \$74

B- Lorelai Drop Sapphire Earrings

#5-115, sterling silver; L: 4.5cm; \$74

C - Juliette Pave Pendant Necklace

#5-117, sterling silver; L: 18"; \$69

D - Lucia Teardrop Pendant Necklace

#5-118, sterling silver; L: 18"; \$69



Big and Bold

Our Big and Bold collection features gold-plated stainless steel.
The pieces are resistant to wear and tear at affordable prices.

A



Chunky Water Drop Earrings

These chunky earrings offer a bold, unique, and striking way to express your personal style. L: 3.1cm.



B



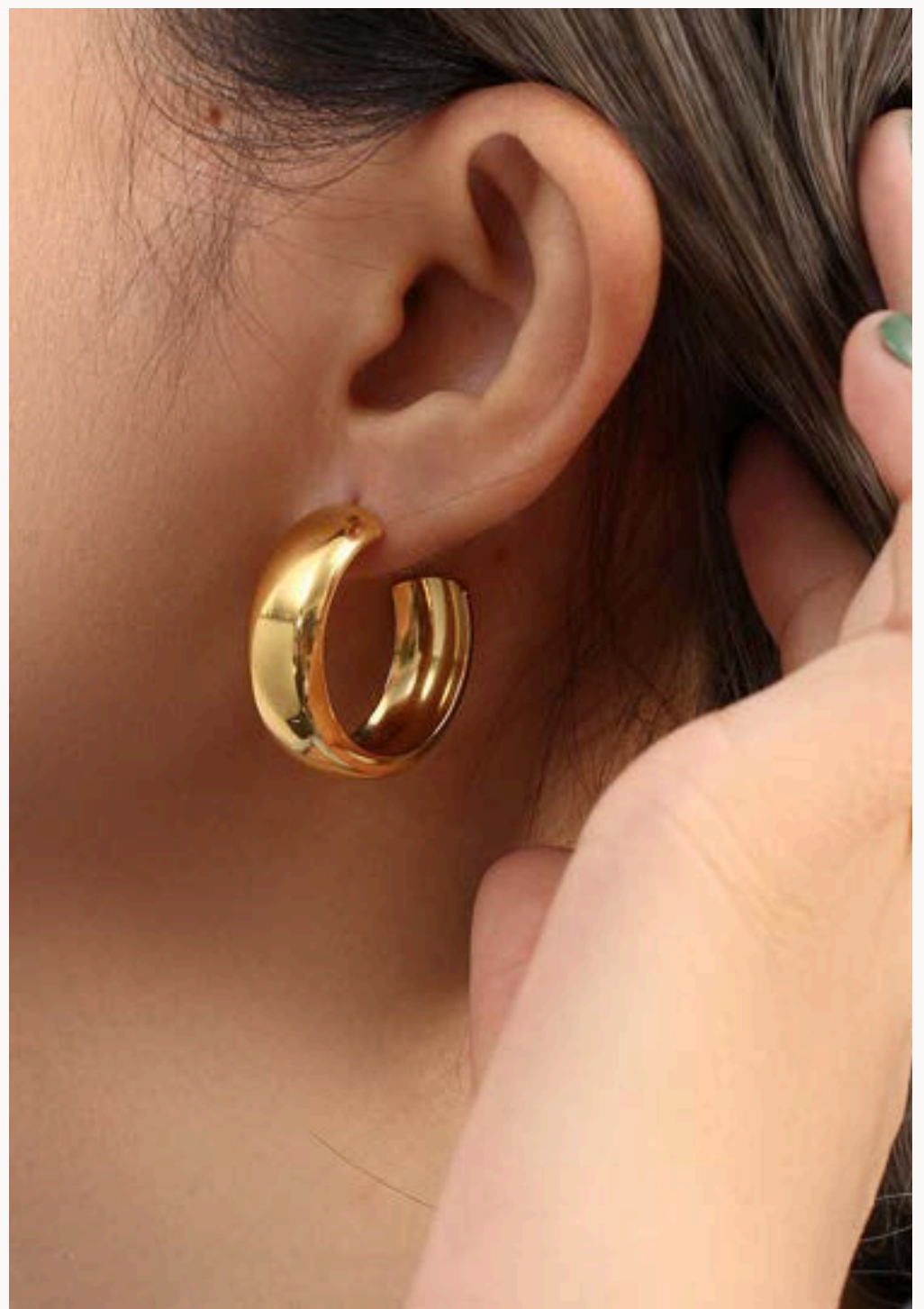
Resistant to water and tarnishing and are exceptionally durable.

A- #2-137 18K gold-plated stainless steel; \$39

B- #2-138, stainless steel (silver); \$39

www.joetjewelry.com





- A - Chunky Gold Flat Hoop Earrings**
#2-128, 18K gold-plated stainless steel;
L: 2.8 cm; \$39
- B- Big and Bold Pebble Earrings (g)**
#2-139, 18K gold-plated stainless steel;
L: 3.3 cm; \$39
- C - Big and Bold Pebble Earrings (s)**
#2-140, stainless steel (silver);
L: 3.3 cm; \$39



- A -Chunky Open Hoop Earrings (g)**
#2-135, 18K gold-plated stainless steel;
L: 3.6 cm; \$39
- B- Chunky Open Hoop Earrings (s)**
#2-136, stainless steel (silver) steel;
L: 3.6 cm; \$39
- C - Bold Paperclip Chain Necklace**
#0-140, 18K gold-plated stainless steel;
L: 18"; \$39

Crusader

The Joy of Caring

At JOET, we are committed to supporting breast cancer research. A portion of the proceeds from our Crusader collection will go directly towards benefiting breast cancer research and raising awareness.

A



Celia Pink Heart Ribbon Studs

With a stunning central pink heart in premium zircon and a simulated diamond lining. L: 2.0 cm.

B



These Celia earring studs are small with a mighty purpose.
#6-111, sterling silver; \$49

www.joetjewelry.com





Saraya Light Pink Oval Earring Studs

#6-112, sterling silver

These light pink studs feature a premium zircon stone and a simulated diamond lining.

L: 0.6 cm; \$49



Tyler Pink Oval Pendant Necklace

#6-113, sterling silver

Featuring a premium pink zircon stone and a simulated diamond on the necklace bail.

L: 18"; \$59



www.joetjewelry.com

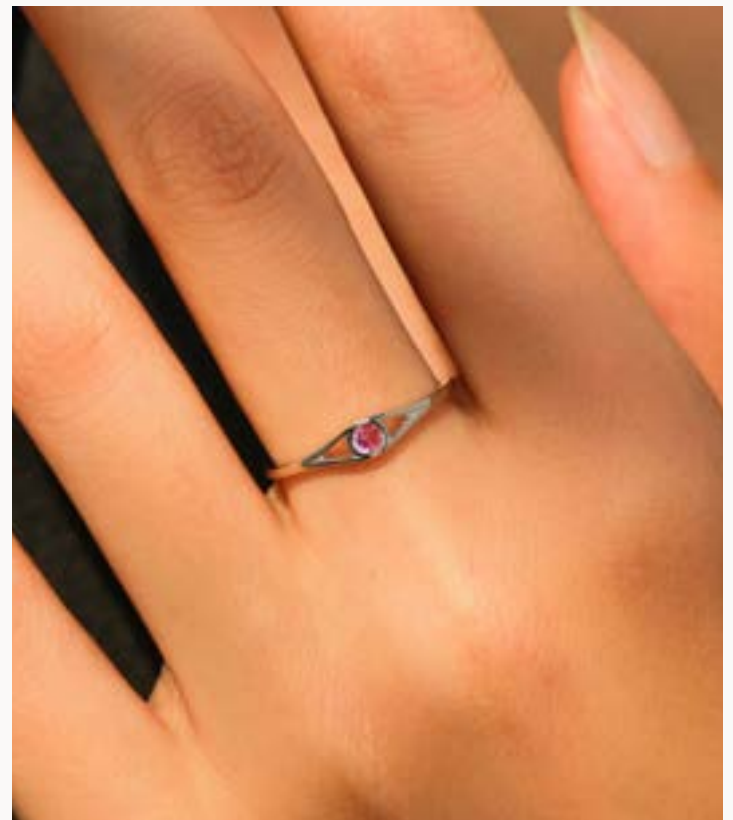




Symone Rose Bud Ring

#6-114, sterling silver

This ring offers a combination of simplicity and versatility with a pink zircon stone on an elegant band. Available in sizes 6 - 9; \$44



Sheena Pink Ribbon Tail Earring Studs

#6-115, 18K sterling silver

Features a luxurious pink zircon stone and a stunning simulated diamond edge with two 'tails'. L: 1 cm; \$49



Let's Connect

Email: joetjewelry@gmail.com

Website: www.joetjewelry.com

Instagram: [@joetjewelry](https://www.instagram.com/joetjewelry)

Facebook: [@joetjewelry](https://www.facebook.com/joetjewelry)



www.joetjewelry.com

