

Photo Records



During the initial consultation, certain records are required for effective treatment. It is recommended that you take pictures to both document treatment and to use as case studies - assuming patient consent: tracking progress in this way throughout treatment is a great way to showcase what Smilelign aligners are capable of.

Extra-oral

Front face at rest

Front face in smile

Profile

¾ profile



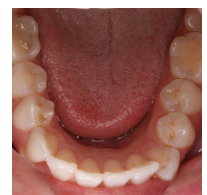
Intra-oral

Front view - teeth in occlusion

Front view - teeth opened

Right side & left side, molars in occlusion

Upper & lower occlusal



If you have any questions, please do get in touch - our technicians are here to help. Call us on 0114 250 0176 or email us at info@smilelign.com.