

PERSPECTIVE

BAY AREA ARTISTS' ASSOCIATION APRIL 2017, Volume 27 Issue IV

President's Letter

BY Judy Caldwell



The Bay Area Artists' Association has been serving the Oregon Coast Bay Area Fine Arts Community since 1991.

Meetings are held the 3rd Thursday of the month, at the Coos Art Museum. Meetings start at 6 p.m. Artists and arts patrons are welcome to join BAAA. "Perspective" is published monthly. The newsletter, monthly programs featuring artists and topics of interest to artists, and networking opportunities with other artists are benefits of BAAA membership. Annual membership is \$25 individual and \$37 family. For membership application, please contact: Wendy Burger 415-272-1894



As the spring growing season approaches, I am also looking forward to the membership of BAAA growing. So far my "perspective" of this organization and its artists has been very prom-

ising and positive. At the present time we have 64 members but many of these artists do not regularly attend our monthly meetings. Often we look to magazines, books, or the internet for inspiration. I would like to suggest that our monthly meetings at CAM are one of our best resources for inspiration with many inspiring programs for us to experience and learn from, in the year ahead.

There is so much to look forward to and enjoy. The Show and Tell at the April meeting will be fun and informative, as we can all participate with an item of our own work.

There is much more to look forward to. Soon the Plein Air excursions will begin as our weather improves. As a newbie to the area I love the idea of painting on location with a group of dedicated painters. The student art show at the Artist Loft Gallery in May will be exciting, and we should all be proud to be part of being able to offer this venue and the prizes to these deserving students. Should BAAA officially become a non-profit organization some time in the future, we will endeavor to get more funding and the result could be many more opportunities for education and assistance for younger or

newer artists at the beginning of their artistic careers.

Your board will soon be working with the survey results and will bring you our recommendations to improve the membership experience for everyone. The survey committee, Jean Adamson and Pete Giambalvo, did a wonderful job presenting the results of the survey. Many thanks to both of them.

In order to grow our membership, I would like to share with you my vision for BAAA. First, I invite those of you who have been inactive to join us again. You may find a spark of inspiration, even if you have laid down your brushes, knives, carving tools, etc. A new or returning member can bring fresh work and new ideas and new eyes. We will also have a chance to meet and enjoy each other's company. The weather may have been a factor in lack of attendance in this past cold season, but now we can come out and play!

If each member can take the responsibility to bring a new or inactive member to a meeting, as Betty Bangs did for me, we could fill the shows and venues that are available to us. It seems to me that often our artists have to wait until one show is over before moving their art work to another show, and often there is not enough work available for the venues. I was a little concerned about the lack of space in our meeting room for our monthly meetings at CAM, but I was informed that we could always fold up the tables to bring in more chairs. All of this is just my way of inviting more of you to come socialize, learn something new, and just **have some fun!**

YOUR PONY VILLAGE MALL SHOW ENTRY BLANK IS ON PAGES 6,7



WHAT'S COMING TO OUR MONTHLY GENERAL MEETING?

April 20 - "MONSTER SHOW AND TELL"

ALL MEMBERS are invited to a mass Show and Tell, showing and discussing recent, or not so recent, works sharing with all of us thoughts about your artwork. Optional Q and A can follow each presentation.

May 18 - "LEARNING SCRATCHBOARD"

GREGG STENDER will do a workshop for all present, to try their hand at scratchboard. Some materials will be supplied.

June 15 - "WHAT A SHOW JUDGE SEES"

DONNA WRIGHT, our gracious 2017 PVM show judge, will be here to invite any artist who had work in the show to ask how she judges in general, and what comments she might offer on member's and non-member's show entries. Entrants should bring their PVM show entries to the meeting.

APRIL MEETING PREVIEW

Some may have gotten confused about our April meeting and the Show and Tell. The monster thing was a gag, really. It was just a way of saying it would be a BIG, FULL, meeting-long Show and Tell, come one, come all, on April 20. All members are asked to bring a work they want to share with everyone present. It can be something old, something new, something borrowed (maybe from a past buyer?) or something blue... or red, green etc. The choice is up to you! It can even be a picture of a monster. It can be jewelry, woodwork, sculpture, whatever it is that you do for art.

We encourage each member to tell us whatever you want to about your particular work and, if you

feel like it, be willing to answer a question or two after you share. We will have all our work on display during our meeting and at the end, when everyone can mingle and talk.

We hope it is a fun and exciting event for us all. If you feel shy, come anyway and just decline to talk about your work, but please bring something. It will be like a mini exhibit. Since our group is founded on sharing and camaraderie among fellow artists, this is a great opportunity to take part in both. If it works, we will do it again next year.

The
Artist LOFT
GALLERY

367 ANDERSON ST COOS BAY, OREGON
(2 DOORS WEST OF THE COOS ART MUSEUM)
HOURS: TUES - SATURDAY 10 - 5
(541) 756-4088
THE ONLY CO-OP ART GALLERY IN THE BAY AREA



ARTIST OF THE MONTH - DARLENE DIHEL

Darlene is an artist of SUMI-E, Japanese Ink Brush Painting, and had studied sumi painting without formal instruction until moving to Gig Harbor, Washington, about 20 years ago. Following a brief visit to Japan, the ancient art captured Darlene's heart and spirit over four decades ago. The culture and the arts, especially sumi painting, caught her attention. She began studying and practicing this ancient style of painting for many years on her own, as there were no sumi artists where she lived.

Darlene considers herself a humble student in this simplistic, spiritual style of painting.

Before Darlene discovered sumi, she attended Central Washington College in Washington to study education and there discovered a talent for art. The abstract expressionist era dominated the arts at that time. She experimented with different media, favoring the spontaneity of water-based paints including acrylics and watercolors, but eventually returned to her passion – sumi-e.

Darlene had a great career of teaching grades two through six as well as art, K-12. She and her hus-



continued from previous page
band, Merle, raised two children. Teaching on Kwajalein in the South Pacific for 17 years was the highlight of her career, although she ventured to other schools in Florida, Nevada, Oregon, and Guam.

Upon moving to Gig Harbor, Darlene discovered a prestigious sumi group, the Puget Sound Sumi Artists whose mission is to promote an awareness and understanding of Sumi-e and calligraphy. She has taken many classes from the group's master sumi artists, and now she teaches sumi painting to students of all ages. Participating in festivals and group shows, having solo shows, and giving demonstrations are many of Darlene's art activities.

Darlene still studies the traditional Japanese sumi painting and also adds watercolors. Recently, she has added collage to her work, as well as approaching her paintings in an abstract style, as she did in earlier years. Studying and painting are a constant in Darlene's life, and her journey as a sumi artist is passionate. She will always consider herself a humble student in this simplistic, spiritual style of painting.

at the end of May. (The entry blank is in this issue.) Also, Graham announced that the BAAA sponsored Student Scholarship Show which will be held at the Artist Loft Gallery from May 2 – 27 was fully underway, letters having gone out to each of the 12 invited students. He also said a reception will be held at the gallery for the students, their parents and teachers, and all BAAA members on Saturday May 13 between 1 and 4.

In another announcement, Graham said that since BAAA would have only had two shows this year (The Mall show and the SWOCC show in the fall,) that he had volunteered to reinstate, and chair the Evergreen Court Show and that it would be January and February, 2018. (In a later development, Jean Boynton graciously volunteered to be co-chair.

Judy reminded us of the special Show and Tell for the April meeting encouraging everyone to bring a piece of their artwork to share with all present.

Moving on to our program, presenter Susanne Weston took front and center. Susanne uses a variety of low relief materials to make nature patterns on a variety of background materials – mostly flat polished lapidary blanks, and slabs of wood, often fir or myrtle. Then, using a variety of pourable, drippable, or meltable materials (various glue-like materials and solders) she makes images of trees (mostly) but other things, like dragonflies. After the materials have hardened she then covers the relief material with paint, metal leaf, or other finishes. The end result is a multidimensional and multicolored artwork. (See last month's issue for a photo image.)

For the first item in her demonstration, a flat piece of polished stone, Susanne melted some "Modpodge ModMelts" (yes, from the all star decoupage 1970's company,) and on another piece of stone she dripped a product called "Marabu Relief Paste" (a tube of black squeezable material used in stained glass work.)

As she dripped the materials on in the shapes she wanted, she would use a very small tool to work in the tree's foliage and branch indentations before the material completely hardened. The materials set very quickly and so she moved on to using acrylic paint on the black Maribu item, and metal leaf on the ModPodge tree. The end result was striking.

Not only was she sharing her particular style of artwork, she was encouraging us all to experiment and use various other materials in our artwork for different effects and to widen our artistic view. Her openness to a variety of materials and experimentation was a great idea for all of us.



**GALLERY
BY THE
BAY**

2100 Union St. NORTH BEND
Hours: Wednesday – Sunday 10 – 2

541-808-3404 541-870-6389

OUR MARCH MEETING

23 showed up for our March meeting with regular members, visitors, new members, and occasional attenders on the scene. President Judy Caldwell called the meeting to order and, being a quarterly business meeting, she invited Sam Greer to read the financial report. All is well. Our current operating balance is \$3869.29, and total funds on hand are \$5626.09. Expenses included \$50 for reservation of a site for our July picnic. Sam said the picnic was now slated for July 9 at 3 pm. (For full information see the article later in this issue.)

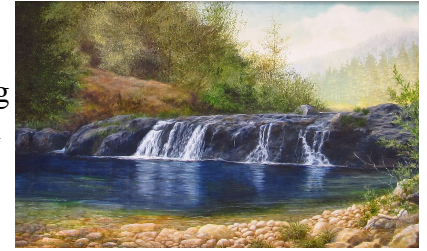
Judy reminded us of the upcoming PVM show

WHAT INSPIRES - YOU ?? - by Carol Turner

(Here is the latest chapter in this new feature. The idea is to invite you, as member artists, to submit a short article sharing with us what inspires you in your work. It may be another artist, it may be music, it may be dreams...but we all have things that spark our creativity. Please send me YOUR inspiration. Your editor.)

DRAWING INSPIRATION FROM NATURE'S STORIES

As far back as I can remember I have been drawn to the Oregon forests and farmlands. As a child my happiest hours were spent in the woods surrounding our farm located nine miles up a winding, gravel road out of North Plains; a small hamlet near Portland. Then, after living in California for 25 years, I returned to Oregon, which I consider my home state, and I revel in the ability to roam at will through the mountains again.



Wandering through a deep wilderness forest or standing in the cool mist of a glorious waterfall has always been an inspiring and thrilling place to find motivation to paint. The pristine rivers and laughing, sparkling streams of the Northwest are like a magnet to my soul, prodding me to try to capture their colors and atmosphere. If I could capture the sounds and smells of them in my paintings, I would be ultimately satisfied.



I am also inspired to paint pictures of old farms and historic old homes, preserving their personalities on canvas before they fall to ruin and disappear. And, although I find immense peace and contemplation watching the waves roll in at the beaches of our beautiful Pacific Ocean, I am more inclined to paint the grassy dunes, rugged cliffs, and lighthouses found there. In these I draw inspiration from like minded 19th century Hudson River School painters:

Thomas Moran, Albert Bierstadt, Thomas Cole, and Hermann Herzog.

Every magnificent tree, each old house, or weathered barn, every storm beaten cliff, and lighthouse beckons me to tell its story before it's gone. Many frustrations are wrought from failing to make my paintings speak those silent stories...yet, if I can relay even a small portion of them, I find reward and fulfillment in my art.

(Painting above right "Respite for the Soul," by Carol Turner. Lower left by Hermann Herzog.)

TURNER
Art Studio
& GALLERY

CAROL TURNER
541-396-5373
541-297-8703

• FINE ART
• OIL PAINTING
CLASSES

Open Friday 12:30 - 6

Pony Village Mall, West Wing, (entrance across from Safeway)
Mail: 63618 Fairview RD, Coquille, OR 97423
www.carolturnerart.com

A WHOLE TROOP OF BAAA MEMBERS IN NEW CAM SHOW

Just got back the acceptance roster for the upcoming Expressions West 2017 show at the Coos Art Museum. It is very exciting to report that the work of the following BAAA members has been juried into the show:

Pat Snyder, Sarita Southgate
Becky Phillips, Susan Lehman
Victoria Tierney, Carol D. Howald, and
Sharon Jensen

WAY TO GO BAAA MEMBERS!!!

Any other arts group that can claim this many entrants in Expressions West 2017 ? !!

SET YOUR SIGHTS ON NEXT WINTER - WAIT... WHAT ???

BAAA has another "new" members-only show to add to our list. We had 3 shows in 2016, but that included the Black Market Gourmet show, which was a one time event, though it may happen again sometime in the future. Down to only 2 shows for the coming 12 months, Barbara Maisch, of Evergreen Court, had an opening for January and February, 2018. The Board stepped in to volunteer BAAA to fill that spot. So in the next 12 months we will be back to 3 annual shows for members.

Please put it on your calendar now so you will be thinking of it as the months roll by. Details will appear in the *Perspective* next fall.

Art Supplies and Picture Framing
Paint, paper and drawing supplies
Art instruction books, sketchbooks & journals
Children's department
Ask about
FREQUENT BUYER DISCOUNT CARD !

245 S 4th St, Coos Bay
www.coosartconnection.com
541-267-1086

Art connection

BANDON DISCOVERY CENTER
UNLEASH YOUR IMAGINATION



OPEN WED – FRI 11-4

(FIND us at SAGE PLACE)
525 11th St SE, Bandon
(541) 329-0303



JULY PICNIC DATE CHANGE

by Sam Greer

BAAA members will have their annual summer picnic on a new date, Sunday, July 9th at the Bastendorff Park large, ocean view shelter in the day-use area by the campground. We will start to gather at 3:00 PM around the fire-pit, where the roasting of hotdogs and toasting of buns will commence; franks and buns being provided, as will be coffee, water and juice. Plan to spend some quality time with other BAAA members as your schedule permits on July 9.

Your assignment, should you choose to accept it, will be to bring; a picnic pot-luck dish to share, your table service, a serving spoon, and a lawn chair. The shelter has power, so main dishes or sides can be kept warm; for sure we will need a crock-pot of chili for “chili dogs!” There are an electric stove, eight counter-top outlets, a cold-water sink, and five picnic tables in the shelter, with three tables outside. An ice tray buffet will be available for salads and desserts; and there may be room for ‘adult beverages’ as well.

Minor athletic events will be held if members bring lawn games or contests to share, and if we have a sunny, warm day. Otherwise, bring a favorite board game or cards if we have to entertain ourselves at tables inside the shelter. If someone has horseshoes, there is a handy pit nearby. Please RSVP Sam Greer at 541-294-4143 or email at sam2coast@live.com in order for us to get a count for the food and drink items BAAA will be providing, and to get some idea of the dishes that are being planned for sharing.

Remember our pic-a-nic motto, “Bay artists just want to have fun!” See you there!

BAAA ARTIST EXHIBITS

PACIFIC PARK GALLERY
CHRISTY SANDERS -
Through April

HIGH TIDE CAFE

Liz Coke - through April

COOS BAY LIBRARY

Darlene Dihel – April - (Walls and Lobby)

Victoria Tierney – Watercolors -- May (Walls)

COOS ART MUSEUM

CAM – EXPRESSIONS WEST

Pat Snyder, Sarita Southgate, Becky Phillips,

Susan Lehman Victoria Tierney,

Carol D. Howald, and Sharon Jensen

April 14 – June 30

ARTIST LOFT PARK GALLERY

Wendy Burger - through April

CALLS TO ARTISTS

PACIFIC PARK GALLERY – OPEN CALL

Pacific Park Gallery has a continuing call for innovative artists. They are inviting local artists to submit their work for jurying, in order to select exhibitors. Contact Janne LaValle, PO Box 635, Lakeside, Or. 97449.

ARTISTS: 2018 ODFW ART COMPETITIONS

Artists are invited to compete in the Oregon Department of Fish and Wildlife’s 2018 art competitions. Entries are accepted between August 25 - September 29, 2017. For more information see the ODFW website.

24TH ANNUAL MARITIME ART EXHIBITION

Coos Art Museum July 8-September 23, 2017

Deadline; postmarked by Saturday, April 29, 2017

Coos Art Museum continues its tradition of hosting an annual Maritime Art Exhibition on the scenic southern Oregon Coast.

ALSO Plein-Air/Paint out event for maritime painters.

July 8, 2017 A day of painting outdoors on the Coos Bay; city docks, shipyards, sandy beaches, etc. within 10 miles of the Museum. The prospectus is online at

www.coosart.org or 541 267-3901 for paper or email copy.

CLASSES

ART BY THE SEA - BANDON

541-347- 5355

April 12 – Printing with Botanicals with Carol Jones
 11:30-2:00 \$30 (Maximum of 5 students)

April 19 – Watercolor, Pen & Ink with Kathleen Morey Bailey & Robin Hanna
 11:30-3:00 \$30

April 20 – Pastel, Pastel! with Jean Stephenson
 11:30-3:00 \$30

April 26 – Collage Group 1-3:00 \$5 (There is no specific instruction. Bring a project.)

Bay Area Artists' Association 2017 PONY VILLAGE MALL OPEN SHOW

ENTRY FORM

DATES May 31 - June 3, 2017 (Artwork to be submitted on **Wednesday May 31**)

ELIGIBILITY All artists (BAAA members **AND** non-members) age 18 and older. There will be two levels- **Beginner /Intermediate** and **Advanced /Professional** (you decide which you are more comfortable with.)

CATEGORIES Each level will have the following categories:

OIL
ACRYLIC
WATERCOLOR
MIXED MEDIA (Includes COLLAGE)

PASTEL (Traditional or oil)
DRAWING
(Any drawing medium or combination of drawing media)
PHOTOGRAPHY

ENTERING AND AWARDS (PLEASE – Do not enter any work previously entered in past PVM Shows)

Entries are NOT juried in and up to a total of 3 submissions by each artist will be accepted. Ribbons will be awarded for 1st, 2nd, 3rd place and Honorable Mention in each category listed above for each level. There will also be “Best of Show” and “People’s Choice” ribbons awarded.

SUBMISSION GUIDELINES & REQUIREMENTS Entry fee is \$7.00 for the first entry and \$5.00 each for the second and third entries. (please make checks payable to **BAAA**.) Entries will be accepted between 11 am. and 1 pm. on May 31. (See **DEADLINE FOR ENTRY**... below) All artwork must be ready to hang with **PICTURE HANGING WIRE** (NO HOOKS OR OTHER HANGERS). All artwork must be *original* work created by the submitting artist - No reproductions or any work shown in a previous PVM Show. Also no work in violation of copyright will be accepted. Please label the back **and front** of your work with the labels on the next page. (**Additional copies of labels will be available on entry day.**) Show Chair, Carol Hanlin, reserves the right to reject any work(s) deemed unacceptable at the time of arrival.

JUDGE - We are honored to have well known local artist and teacher Donna Wright as our juror this year.

DEADLINE FOR ENTRY & PICKUP OF ARTWORK Deliver artwork and pay entry fees on Wednesday May 31 at the show location **next to Sears** in the PV Mall from 11:00 until 1:00. (If you can't be there that day and time, and can't find someone else to bring in your artwork and fees for you, we can try to make other arrangements.) **Artwork must be picked up at show closing, Saturday June 3rd between 4 and 5 pm.** Please bring your receipt (for your protection) to collect your art. Failure to collect artwork by 5:00 on Saturday will result in a \$10 handling and storage fee.

SALES In the event we have an interested buyer, we will make every attempt to contact you by phone so you can directly make arrangements for delivery or pickup of the item with the buyer. If we cannot reach you we will sell the item for the listed price and hold the item pending your instructions. Payment for sold artwork will be made at closing on Saturday June 3 at 5 pm. **There will be a 20% commission fee on sold artwork, to benefit BAAA.** However, if at all possible, we prefer that all sold artwork remain on exhibit until the end of the show.

THE LEGAL STUFF All representatives and agents of Bay Area Artists' Association (BAAA), as well as the display venue, assume no liability for damage, loss, or injury to persons or property. Every precaution will be taken in handling and exhibiting artwork. Artists are encouraged to have insurance on their artwork.

QUESTIONS? Contact Show Chair: Carol Hanlin (541) 808-7426

PLEASE BRING ATTACHED ARTIST'S AGREEMENT & SIGN UP FORM and ALL LABELS, ON 5/31/17

ARTIST'S AGREEMENT & SIGN UP

I have read and understand the “Call To Artists” and agree to abide by the content therein.

LEVEL (circle one)

BEGINNER/INTERMEDIATE

ADVANCED /PROFESSIONAL

Artist's Name (print) _____

Address _____ (Save time! Use address labels)

City, State, Zip _____

Phone (preferably Cell, if you have one) _____ Email _____

Artist's Signature _____

To simplify the hanging at our Pony Village Show, we request you use these labels for your art work. They come in sets of two, one for the back of your painting, and one for the front. Both will need to have "Exhibit #" entered by the staff worker at the sign in table, so please be sure to leave "Exhibit #" blank. Thanks for helping us have an easy entry day and a great show. (Again, use address labels and save time!)

LABELS FOR BACK OF ART
PLEASE PRINT

LABELS FOR FRONT OF ART
PLEASE PRINT

ENTRY #1 (Back) *Exhibit No.* _____

ENTRY #1 (Front) *Exhibit No.* _____

Name: _____

Name: _____

Address: _____

Address: _____

_____ **Phone:** _____

_____ **Phone:** _____

Title: _____

Title: _____

Level: (circle one) Beginner/Intermediate Advanced/Professional

Level: (circle one) Beginner/Intermediate Advanced/Professional

Medium: _____

Medium: _____

Price: _____ **or : NFS (circle)**

Price: _____ **or : NFS (circle)**

ENTRY #2 (Back) *Exhibit No.* _____

ENTRY #2 (Front) *Exhibit No.* _____

Name: _____

Name: _____

Address: _____

Address: _____

_____ **Phone:** _____

_____ **Phone:** _____

Title: _____

Title: _____

Level: (circle one) Beginner/Intermediate Advanced/Professional

Level: (circle one) Beginner/Intermediate Advanced/Professional

Medium: _____

Medium: _____

Price: _____ **or : NFS (circle)**

Price: _____ **or : NFS (circle)**

ENTRY #3 (Back) *Exhibit No.* _____

ENTRY #3 (Front) *Exhibit No.* _____

Name: _____

Name: _____

Address: _____

Address: _____

_____ **Phone:** _____

_____ **Phone:** _____

Title: _____

Title: _____

Level: (circle one) Beginner/Intermediate Advanced/Professional

Level: (circle one) Beginner/Intermediate Advanced/Professional

Medium: _____

Medium: _____

Price: _____ **or : NFS (circle)**

Price: _____ **or : NFS (circle)**

**Bay Area Artists' Association
Officers**

President
Judy Caldwell
judycaldwell16@gmail.com
Vice President
Sally Rolicheck
srolicheck@gmail.com
Secretary
Graham Wickham
grwick@gmail.com
Treasurer
Sam Greer
sam2coast@live.com

COMMITTEES

ARTIST OF THE MONTH
Jean Boynton
jeanboynton1@gmail.com

EDUCATION
Charles Edmunds
541-297-8099

HISTORIAN
Veneita Stender
541-756-3642

LIBRARIAN
Georgia Martin
541-267-6181

MEMBERSHIP
Wendy Burger
415-272-1894

NEWSLETTER
Graham Wickham
grwick@gmail

**NEWSLETTER DEADLINE IS THE
25TH OF EACH MONTH**

PROGRAMS
Graham Wickham
grwick@gmail

PUBLICITY
Paulette Landers
PauletteGLanders@aol.com

SHOW CHAIRS
Pony Village Mall Show, (May)
Carol Hanlin
Eden Hall Show, (Sept-Oct)
Beth Wegner
Evergreen Court Show, (Jan - Feb)
Graham Wickham – Chair;
Jean Boynton - Co-Chair

SUNSHINE COMMITTEE
Veneita Stender
541-756-3642

WEBSITE
Charles Edmunds
541-297-8099

BAAA
P.O. Box 907
Coos Bay, OR 97420
www.BayAreaArtists
Association.com

BAY AREA ARTISTS ASSOCIATION
PO BOX 907
COOS BAY, OR 97420

www.bayareaartistsassociation.com

NEXT
MEETING
THURSDAY
APRIL 20
6 PM
@ COOS ART MUSEUM