

# THE ULTIMATE

# LSAT

## WORKBOOK



**LSAT  
Q-BANK**



**TARGETED  
DRILLS**



**VIDEO  
SOLUTIONS**



DESIGNED TO **SIMPLIFY** THE LSAT AND SCORE A **170+**



# TABLE OF CONTENTS

## LSAT WORKBOOK VOL. 1:

Table of Contents.....	1
Guide Breakdown.....	2
<b>Logic Translation Drills:</b>	
Logic Translations 1.....	3
Logic Translations 2.....	4
<b>Logic Chain Drills:</b>	
Logic Chains 1.....	5
Logic Chains 2.....	6
<b>Argument Structure Drills:</b>	
Argument Structure 1.....	7
Argument Structure 2.....	8
Argument Structure 3.....	9
Argument Structure 4.....	10
<b>Argument Flaw Drills:</b>	
Argument Flaws 1.....	11-12
Argument Flaws 2.....	13-14
<b>LSAT Sections:</b>	
Practicing with LSAT Sections.....	15
Logical Reasoning 1.....	16-26
Logical Reasoning 2 .....	27-36
Reading Comprehension 1.....	37-48
Reading Comprehension 2.....	49-61
<b>Answers</b> .....	62-72



# WORKBOOK BREAKDOWN

This book is designed to provide an array of practice drills and questions to prepare you to ace the LSAT. There are multiple drills that target specific skill sets necessary for LSAT success, followed by four full LSAT sections.

The following provides a breakdown of the drills included in this book:

## Drills

**Logic Translations:** These drills are designed to test your ability to transform sentences into simple “If X, then Y” statements. While some individuals may instinctively be able to do this, many struggle to understand complex statements on the LSAT. Being able to transform these statements quickly can help simplify and speed up a given LSAT question.

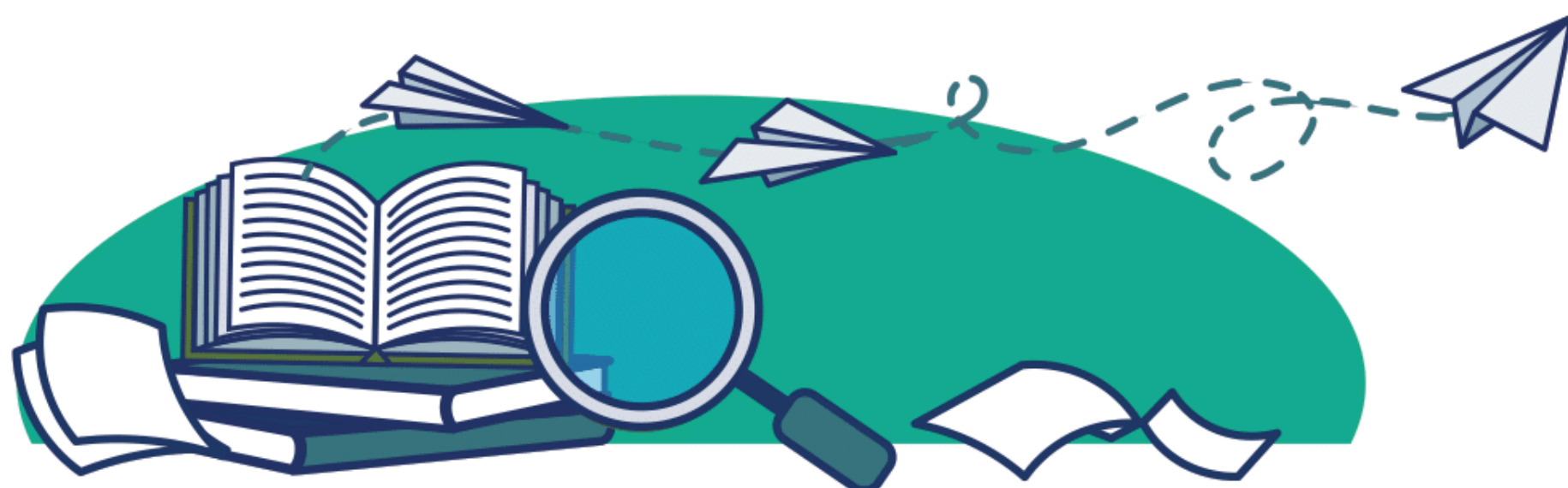
**Logic Chains:** The logic chain drills test your ability to understand and comprehend complicated and interactive logical relationships. While this skill is less commonly tested on the LSAT, it is nevertheless an important one to practice and ensure you can competently put to use.

**Argument Structure:** The argument structure drills test your ability to identify the different argument parts within an argument. This is absolutely essential for Logical Reasoning, as nearly every single LR question involves an argument. Understanding how to break down these arguments quickly helps you solve almost every question.

**Argument Flaws:** These drills test your skills in identifying the flaw within a given argument. Similar to identifying argument parts, most Logical Reasoning questions involve a flawed argument. Thus, being able to identify these flaws is essential to success.

## LSAT Sections

Finally, there are four full LSAT sections included, totalling 103 questions from previously administered official LSAT tests. While the above drills are useful, these questions test your ability far better than any drill as they are the exact form of questions you will face on your official LSAT. When completing them, stick to the correct timing of 35 minutes per section. Additionally, always apply the Blind Review method (see page 4 of **The Complete LSAT Bundle** for a review of the Blind Review method).





Click or Scan to  
get the **Ultimate  
LSAT Workbook**

# LOGIC CHAIN 1

Given the following paragraphs, determine whether or not the statements made after are logically valid based on the logic chains within the paragraph. Mark each statement as either valid or not valid. To solve these effectively, try drawing out logic chains to link all related conditions. Remember that to create the chain, you may need to find the contrapositives for some statements. To review logic chains, see page 11 of **The Complete LSAT Bundle**.

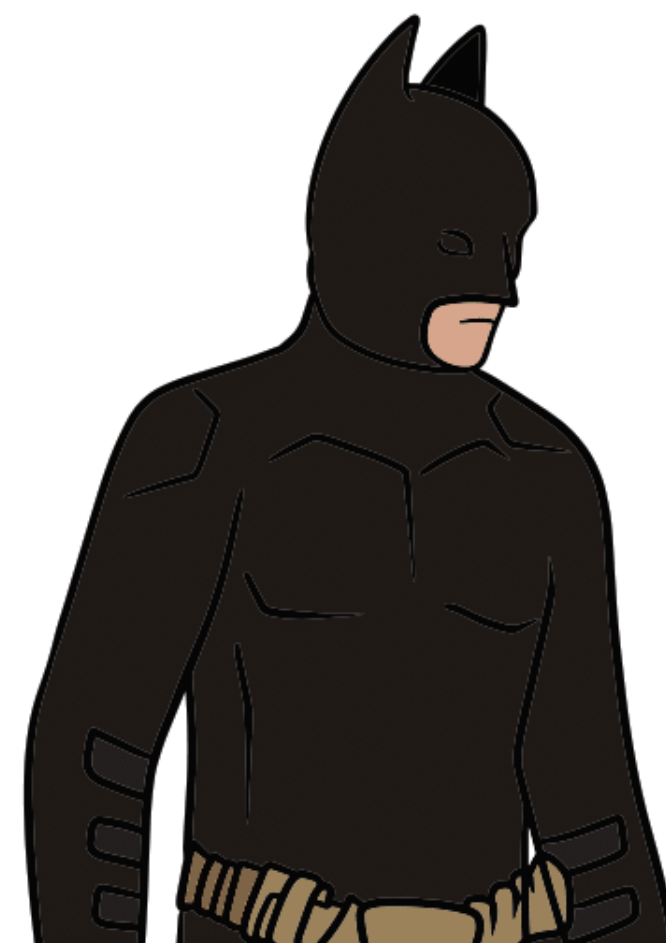
## Paragraph 1:

If Bane escapes from Arkham, then Gotham is in danger. If Gotham is in danger, then Catwoman will help. If Catwoman helps, then Batman is not undercover. If Batman is not undercover, then Commissioner Gordon has contacted him. If Commissioner Gordon has contacted Batman, then the Joker is planning something. And if the Joker is planning something, then Batman must be in Gotham.

## Statements:

1. If Bane escapes from Arkham, then Batman is in Gotham
2. If Gotham is not in danger, then Bane did not escape from Arkham.
3. If the Joker is planning something, then Bane escaped from Arkham.
4. Catwoman does not help, then Gotham is not in danger.
5. If the Joker is not planning something, then Batman is not in Gotham.
6. If Batman is not in Gotham, then Bane did not escape from Arkham.
7. If Bane escapes, then Catwoman will not help.
8. If Commissioner Gordon has not contacted Batman, then Batman is undercover.
9. If Batman is undercover, then the Joker is not planning something.
10. If Batman is in Gotham, then Bane might have escaped from Arkham.

1. \_\_\_\_\_
2. \_\_\_\_\_
3. \_\_\_\_\_
4. \_\_\_\_\_
5. \_\_\_\_\_
6. \_\_\_\_\_
7. \_\_\_\_\_
8. \_\_\_\_\_
9. \_\_\_\_\_
10. \_\_\_\_\_





# ARGUMENT STRUCTURE 1

Given the following arguments, identify the context, premises and conclusion of each argument. It should be noted that many of these arguments contained flawed reasoning, however, you will learn about that in the following lesson. **Highlight the context in purple, premises in green, and conclusions in yellow.** To review argument structure, see page 14 of **The Complete LSAT Bundle**.

**1:** Superhero movies have dominated the box office in recent years, largely due to strong fan loyalty and high-quality special effects. However, when a superhero movie receives overwhelmingly negative reviews from critics, fans tend to stay away. The latest Spider-Man movie received overwhelmingly negative reviews, so it will perform poorly at the box office.



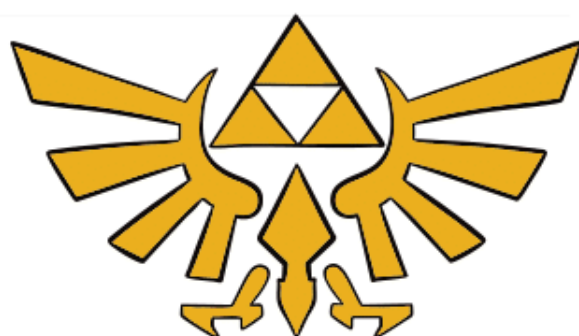
**2:** Many companies use remote work policies to attract top talent and reduce overhead costs. A recent analysis showed that companies offering remote work options filled job openings 30% faster. Those companies also reported reduced office expenses. So offering remote work options helps companies attract talent more quickly and lower operational costs.

**3:** Schools may choose to welcome incoming high-achieving applicants with various rewards. Law schools often award scholarships to applicants who score above 170 on the LSAT and have a high GPA, as high scores indicate strong academic potential. Sarah scored 172 on the LSAT and has a 4.0 GPA, so she is likely to receive a scholarship.

**4:** “Game of Thrones” became a cultural phenomenon because of its complex characters and unpredictable plot twists. However, after the final season received mixed reviews, many fans stopped watching related spin-offs. Since the new spin-off has been poorly reviewed, it will probably not attract many viewers.



**5:** In the video game world, “The Legend of Zelda” series is praised for its innovative gameplay and storytelling, attracting a loyal fan base. New releases that do not introduce significant innovations tend to receive less enthusiasm from fans. The latest Zelda game did not introduce new and innovative gameplay mechanics, so it will likely be less successful than previous titles.



**6:** The leaders of Stonefield Township have been concerned about public health and are looking for ways to promote healthier dietary choices. High taxation on sugary drinks is intended to reduce consumption and improve public health. In one city where such a tax was introduced, sales of sugary beverages dropped by 30%. Therefore, if the leaders of Stonefield implement the sugary drink tax, they will effectively reduce the consumption of sugary drinks.

**7:** All successful technology companies innovate continuously. Company X is a successful technology company. Therefore, Company X innovates continuously.

**8:** Either the book was written by Author A or Author B. It was not written by Author B. Therefore, it was written by Author A.





Click or Scan to  
get the **Ultimate  
LSAT Workbook**

# ARGUMENT FLAWS 1

Given the following arguments, identify whether or not there is a flaw (or multiple flaws) present in the arguments below. If a flaw exists, describe how the argument can be fixed. This will likely require the use of additional premises to bridge the gap between the premises and conclusion. To review argument flaws, see page 16 of **The Complete LSAT Bundle**.

**1:** Michael Scott manages his office with unconventional management styles. Nevertheless, his branch was the most profitable this quarter. Therefore, his unorthodox management style is the best for all workplaces.



**2:** A seed needs water and sunlight to grow, and students need textbooks and teachers to expand their minds. Since sunlight is natural and free, teachers should also work for free.

**1:** If we don't raise tuition, we won't be able to maintain our facilities. So, we have no choice but to raise tuition.

**4:** Slytherins are untrustworthy because they belong to Slytherin House, and everyone knows that Slytherin House is where all the untrustworthy students are sorted.



**5:** Taylor Swift writes emotionally complex songs. Therefore, all successful artists must have high emotional intelligence.



**6:** Every time I wear my lucky socks, my favorite team wins. Therefore, my lucky socks must cause my team to win.



Click or Scan to  
get the Ultimate  
LSAT Workbook

# PRACTICING WITH LSAT SECTIONS

®

**The following pages include four full LSAT sections.**

Each page includes scannable and clickable QR codes to take you to the video solutions for each question:



**EITHER:**

**Scan QR Code using a smartphone's built-in camera  
or a QR Code scanning app**

**OR**

**Click on the QR Code to be redirected**

While these solutions are readily available while completing the sections, complete each section prior to reviewing the answers.

Finally, remember to blind review before checking your answers!  
The following provides a reminder on how to blind review your questions:

*Reminder to complete  
each following section in  
35 minutes in accordance  
with real LSAT timing.*



## Steps to Blind Review:

- 1.** Keep track of every question that you are unsure of when writing a section.
- 2.** Once you've completed the practice test, **but before looking at the correct answers**, review every question you marked during step 1. Give yourself as much time as you need and change any answer that you believe to be incorrect.
- 3.** Submit your practice test and review both your original score and Blind Review score. If you want to improve on the LSAT, simply use the Blind Review method.

Can it be annoying and time-consuming? Absolutely... but Blind Review will allow you to gain a much deeper understanding of LSAT questions, and help you to understand why you fell for a wrong answer. There is nothing worse than spending an additional 2 hours reviewing a Practice Test after just finishing one, but it is worth the effort. Blind Review will undoubtedly help you improve.





Q6



Q7



Q8



### PT109, Section 3, Q6

The recent cleaning of frescoes in the Sistine Chapel has raised important aesthetic issues. Art historians are now acutely aware that the colors of the works they study may differ from the works' original colors. Art historians have concluded from this that interpretations of the frescoes that seemed appropriate before the frescoes' restoration may no longer be appropriate.

Which one of the following principles, if valid, most helps to justify the art historians' reasoning?

- (A) The appropriateness of an interpretation of an artwork is relative to the general history of the period in which the interpretation is made.
- (B) The restoration of an artwork may alter it such that it will have colors that the artist did not intend for it to have.
- (C) The colors of an artwork are relevant to an appropriate interpretation of that work.
- (D) Art historians are the best judges of the value of an artwork.
- (E) Interpretations of an artwork are appropriate if they originated during the period when the work was created.

### PT109, Section 3, Q7

Unlike newspapers in the old days, today's newspapers and televised news programs are full of stories about murders and assaults in our city. One can only conclude from this change that violent crime is now out of control, and, to be safe from personal attack, one should not leave one's home except for absolute necessities.

Which one of the following, if true, would cast the most serious doubt on the conclusion?

- (A) Newspapers and televised news programs have more comprehensive coverage of violent crime than newspapers did in the old days.
- (B) National data show that violent crime is out of control everywhere, not just in the author's city.
- (C) Police records show that people experience more violent crimes in their own neighborhoods than they do outside their neighborhoods.
- (D) Murders comprised a larger proportion of violent crimes in the old days than it does today.
- (E) News magazines play a more important role today in informing the public about crime than they did in the old days.

### PT109, Section 3, Q8

Most people invest in the stock market without doing any research of their own. Some of these people rely solely on their broker's advice, whereas some others make decisions based merely on hunches. Other people do some research of their own, but just as often rely only on their broker or on hunches. Only a few always do their own research before investing. Nonetheless, a majority of investors in the stock market make a profit.

If the statements in the passage are true, which one of the following must also be true?

- (A) Some people who make a profit on their investments in the stock market do so without doing any research of their own.
- (B) Most people who invest in the stock market either rely solely on their broker or make decisions based merely on hunches.
- (C) Some people who do investment research on their own, while just as often relying on their broker or on hunches, make a profit in the stock market.
- (D) Most people who invest in the stock market without doing any research of their own make a profit.
- (E) Most people who rely solely on their broker rather than on hunches make a profit in the stock market.



Q18



Q19



Q20



**PT111, Section 2, P3, Q18**

It can be inferred from the passage that philosophers of science view the laws of physics as

- (A) analogous to the laws of history
- (B) difficult to apply because of their uncertainty
- (C) applicable to possible as well as actual situations
- (D) interesting because of their particularity
- (E) illustrative of the problem of historical contingency

**PT111, Section 2, P3, Q19**

It can be inferred from the passage that determinist biologists have tried to emulate physicists because these biologists believe that

- (A) the methods of physicists are more easily understood by nonscientists
- (B) physicists have been awarded more respect by their fellow scientists than have biologists
- (C) biology can only be considered a true science if universal laws can be constructed to explain its phenomena
- (D) the specific laws that have helped to explain the behavior of particles can be applied to biological phenomena
- (E) all scientific endeavors benefit from intellectual exchange between various scientific disciplines

**PT111, Section 2, P3, Q20**

The passage suggests that the preference of many philosophers of science for the field of physics depends primarily upon

- (A) belief that biological laws are more difficult to discover than physical laws
- (B) greater attention given to recent discoveries in physics as opposed to those in biology
- (C) bias toward the physical sciences in the research programs of many scientific institutions
- (D) teaching experiences of most philosophers of science
- (E) nature of the phenomena that physicists study



## IMPORTANT INFORMATION AND DISCLAIMERS

All actual LSAT® content reproduced within this work is used with the permission of Law School Admission Council, Inc., (LSAC®) Box 40, Newtown, PA 18940, the copyright owner. LSAC does not review or endorse specific test-preparation materials, companies, or services, and inclusion of licensed LSAT Content within this work does not imply the review or endorsement of LSAC. LSAT (including variations) and LSAC are registered trademarks of LSAC.

By downloading this material, you acknowledge and agree to the following terms and conditions: you recognize that the material and all other media produced by LSATwithJack.com, owned by PBNJ PARTNERS LTD., are intended solely as guides and should not supersede your college/university/law school course material and teacher instruction. In the event of any discrepancies between the information provided in these guides and other media and your school's instruction, you will defer to the guidance provided by your school's faculty and staff.

All content included in this digital PDF, such as text, graphics, logos, images, and software, is the property of LSATwithJack.com and protected by international copyright laws. The compilation of all content in this PDF is also the exclusive property of LSATwithJack.com and protected by international copyright laws. Any reproduction, modification, distribution, or republication of the content in this PDF is strictly prohibited. All rights reserved.

The guides and other media created by LSATwithJack.com are strictly intended for educational use only. They are designed to supplement your learning and knowledge. While every effort has been made to ensure the accuracy of the information provided, LSATwithJack.com makes no representations or warranties of any kind, express or implied, about the completeness, accuracy, reliability, suitability, or availability with respect to the information contained in this study guide. The information in this guide is not intended to be a substitute for legal advice.

You further agree not to distribute or share these materials under any circumstances. They are strictly for personal use only and may not be reproduced, replicated, distributed, or shared in any form, including digital products such as PDF files, ebooks, resources, and all online content, without explicit permission.

Copyright © 2024 LSATwithJack.com

All content is the exclusive property of LSATwithJack.com and PBNJ PARTNERS LTD. Replication and distribution of this material is strictly prohibited by law. **Each product sold is licensed to an individual user, and customers are prohibited from distributing, copying, sharing, or transferring the products to any other individual or entity. Violation of these terms may result in fines of up to \$10,000, and individuals found in violation will be reported to their respective colleges/universities/schools of law.**

LSATwithJack.com assumes no liability or responsibility for any errors or omissions in the content of this study guide. Any reliance you place on such information is therefore strictly at your own risk. In no event will LSATwithJack.com be liable for any loss or damage, including without limitation, indirect or consequential loss or damage, or any loss or damage whatsoever arising from loss of data or profits arising out of, or in connection with, the use of this study guide. Every effort has been made to accurately represent the concepts and terminology used in this study guide. However, legal terminology and exam concepts are constantly evolving and may have different interpretations in different contexts. LSATwithJack.com assumes no responsibility for any misunderstandings or misinterpretations of the content of this study guide.

Published: July 2025

Author: Jack Newby, Samantha Durbin, et.al

Title: LSAT Workbook Vol. 1