



Dolce Dew

SKIN COMPANY



DOLCE BLUE

Antioxidant Cleansing Oil

LUMINOUS COMPLEXION

Enriched with moisturizing argan, sunflower, and jojoba oils, along with balancing blue tansy, Dolce Blue brings a radiant glow to your complexion after every use.

REMOVES IMPURITIES

Removes excess dirt, makeup, and impurities. The combination of Moroccan argan oil, sunflower, jojoba oil, and antibacterial blue tansy works together to deeply cleanse.



HYDRATING

Packed with antioxidants, this cleansing oil not only removes impurities but also nourishes your skin, delivering a dewier and softer appearance. Use alone or as part of a two-step cleansing process.

CREAM CLEANSER

Hydrating Cleanser

HYDRATION + RESTORATION

Enriched with apricot and evening primrose oils, this cleanser is specially formulated for aging skin. It hydrates and restores, leaving your skin feeling replenished and nourished.

GENTLE EXFOLIATION

Cylinder root extract and papaya enzymes join forces in this cleanser to provide gentle exfoliation. Experience visibly younger-looking complexion with improved resilience and reduced inflammation.

CLEANSING FOR SOFT FINISH

Tailored for dry/mature skin types, this cleanser ensures a soft and smooth finish, making it an essential part of your daily skincare routine. Use in the morning or evening as a cleanser or makeup remover, and enjoy the option to use on dry or damp skin for a revitalizing massage that enhances circulation.

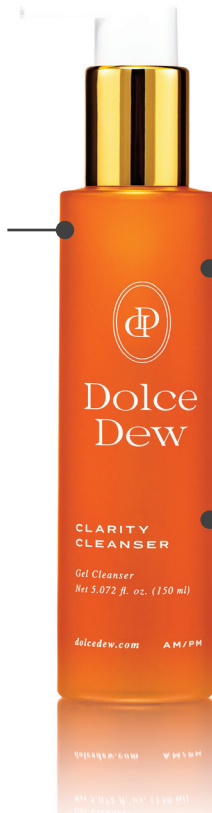


CLARITY CLEANSER

Gel Cleanser

IDEAL FOR NORMAL TO OILY SKIN

Formulated for normal to oily skin types, this cleanser is designed to address the unique needs of all skin types. Can be used AM or PM. It is recommended to use before applying serums and moisturizers.



LUXURIOUS CLEANSING

The combination of papain papaya extract and salicylic acid works to exfoliate and rejuvenate the skin, resulting in a radiant complexion.

KEY INGREDIENTS

Key ingredients such as salicylic acid (2%) for effective cleansing, papain (papaya extract) for exfoliation, and vitamin C for targeting problematic skin.

GENTLE EXFOLIATING AHA/BHA *Foaming Cleanser*



FOR ACNE-PRONE SKIN

Tailored to benefit those prone to acne. The specialized formula addresses common issues like excess oil, redness, and refined pores.

GENTLE CLEANSING

Salicylic acid addresses excess oils, redness, and pore unclogging, while glycolic acid promotes skin renewal by exfoliating dead cells. Our foaming cleanser also includes green tea for skin brightening and cucumber extract for hydration and soothing effects.

GRADUAL USAGE

Gently massage one pump of the cleanser onto your skin for 30 seconds, followed by rinsing with warm water. Pat dry for best results. Start with once-a-day application, gradually increasing as your skin adapts. Ease into your skincare routine to gauge individual tolerance.

Dolce Dew
GENTLE EXFOLIATING
AHA/BHA
Foam Cleanser
Salicylic Acid 0.5%, 2%
Net 6.7 fl. oz. (200 ml)
www.dolcedew.com AM/PM

ENZYME GLAZE + GLOW

Advanced Exfoliating Treatment

GENTLE EXFOLIATION

Formulated with a tropical fruit blend, this exfoliator is free of spheres and particles, making it gentle enough for regular exfoliation of sensitive skin.

INCREASES ELASTICITY

Featuring a dual hydration combination of sodium hyaluronate & glycosaminoglycans, this face polish supports the production of collagen and elastin and plumps the skin.



LEAVES YOU GLOWING

Papaya, pineapple, and grapefruit enzymes help to remove dead skin to reveal a fresher, glowing complexion.

BRIGHTENING EXFOLIATING PADS

Skin Renewing and Resurfacing

REVITALIZE DULL, HYPER-PIGMENTED SKIN

Visibly brightens using a blend of skin-loving acids and natural ingredients. Improve discoloration, texture, and smoothness while reducing the appearance of fine lines and wrinkles.

EASY FOR AM USE

Use in AM after cleansing and before serums and SPF. Gently swipe the pad across the skin, pressing in any excess liquid.



BRIGHTENING INGREDIENTS

Kojic acid brightens, arbutin evens and brightens skin tone while phytic acid reduces pigment. Green tea extract fights free radicals and inhibits melanin production.

CLEAR EXFOLIATING PADS

For Congested + Oily Skin

ACNE FIGHTING

Designed for those with dull and congested skin. These pads have both AHAs and BHA blend to bring out skins brightness while helping to fight and keep stubborn acne away.

GLOWING INGREDIENTS

Glycolic acid delicately exfoliates dead skin cells, salicylic acid purifies the skin by removing excess oil and unclogging pores, while lactic acid resurfaces the skin, unveiling a radiant glow.



RECOMMENDED USE

Use in the morning after cleansing and before serums and SPF. Can customize usage to your skin's needs. If excess drying occurs, drop to every other day or you may gradually increase usage if needed by following the directions of your skin therapist.

POWER PEEL PADS

For Resurfacing + Renewing

LET'S GET GLOWING

Our peel pads use multitude of acids (including medical TCA) to gently exfoliate the top layer of skin to reveal a healthier, more radiant skin that leaves you glowing.

NO MORE DULL SKIN

Adynamic solution for dull skin that brings forth a fresh, glowing new layer, leaving you radiant and confident.



EASY USAGE

Use once or twice a week in the evening after cleansing swipe and leave on for 5-10 min and removes before serums and moisturizers. The gentle exfoliation, that reveals a fresh, glowing new layer of skin, will allow your serums and moisturizers to be absorbed deeper into the skin.

**For an elevated skincare experience, our peel pads are designed to be used under the supervision of an esthetician.*

DAILY DOSE

Vitamin C Serum

POWERFUL ANTIOXIDANT FORMULA

Tetrahexyldecyl Ascorbate, lactic acid, and extracts of strawberry and skullcap act as powerful antioxidants, combating free radicals and supporting skin vitality. Achieve radiant, healthy-looking skin with this serum.

ENHANCED PROTECTION + RENEWAL

Infused with stable vitamin C, lactic acid, strawberry, and skullcap extract, this serum provides increased protection from the sun's harmful rays while resurfacing and renewing the skin. Enjoy powerful antioxidant benefits that fight free radicals, promoting overall skin health.



DAILY GLOW ENHANCER

This serum is designed to make your skin daily while tightening skin, improving uneven skin tone, softening fine lines and wrinkles, and strengthening the skin's barrier. Apply in the morning after cleansing, exfoliating pads, and other serums if using, followed by moisturizer and SPF for enhanced protection and renewal.

BE STILL

Peptide Serum

TARGETED WRINKLE REDUCTION

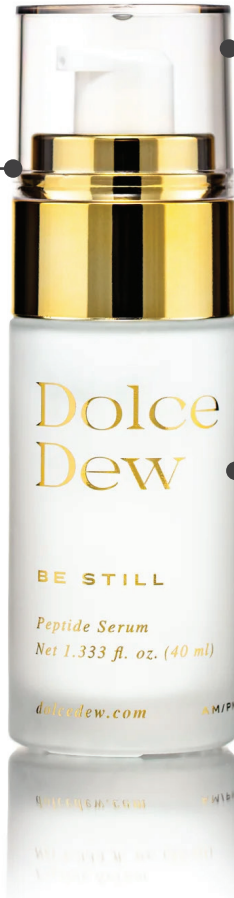
A custom peptide combination, including Argireline and Matrixyl 3000, which work together to smooth fine lines and wrinkles.

HYDRATION + PLUMPING

Multi-dimensional benefits and ingredients that deeply hydrate and plump the skin, give it a refreshed and rejuvenated appearance.

VERSATILE USAGE

Simply use two pumps after cleansing, before your moisturizer, and you can incorporate it into your skincare routine either in the morning or evening. It's gentle enough for twice-daily use if desired.



GOOD GREENS AR

Corrective Serum

PROVEN RESULTS POST- PROCEDURES

Clients show immediate relief post-procedures and, after two weeks of morning and night use, witness visible improvements in hydration and skin tone.



BOTANICAL BLEND

Harnessing the power of botanicals like cucumber extract, green tea polyphenols, chlorophyll, willow bark extract, pure hyaluronic acid, and vitamin C for comprehensive skincare benefits.

SKINCARE TRANSFORMATION

This serum does it all—calms, purifies, hydrates, protects, renews, and illuminates, delivering visible and tangible results.

GLASS SKIN

Niacinamide Serum

POWERFUL NIACINAMIDE

With key ingredients like niacinamide, this serum evens the skin's texture and tone while reducing inflammation. N-acetyl glucosamine aids in moisture retention and gently exfoliates, suitable even for sensitive skin.



BREAKOUT PREVENTION

An acne-fighting blend that works on outbreaks but also visibly minimizes pores, tightens them, and strengthens the skin's barrier, giving you bright and clear skin.

VISIBLE PORE MINIMIZATION + TIGHTENING

Experience the reduction in the appearance of enlarged pores and the tightening of lax or stretched-out pores. Our serum targets uneven skin tone, softens fine lines, and wrinkles, and diminishes dullness, leaving you with brighter, more youthful skin.

CLEAR SKIN SERUM

Salicylic Acid Serum

NOURISHING BOTANICALS

By absorbing excess oils and balancing skin's oil production, it prevents dryness and irritation. The inclusion of botanical antioxidants not only soothes inflammation but also supports overall skin health, providing a comprehensive solution for a clear and healthy complexion.



VERSATILE APPLICATION

Apply post-cleansing and exfoliation, before moisturizer, once or twice daily based on your skin's needs. Distribute evenly on your face or use as a targeted spot treatment. For morning use, remember to follow up with SPF for comprehensive skin protection.

ACNE-FIGHTING DUO

Provides a double dose of acne-fighting ingredients that work synergistically to clear existing blemishes and prevent new ones. Salicylic acid removes excess oil and unclogs pores, while niacinamide evens skin texture, reduces inflammation, and supports a balanced oil production.

RADIANT REFRESH

Illuminating Serum



ANTI-AGING FORMULA

Niacinamide repairs DNA, tranexamic acid brightens, and lactobionic acid and mandelic acid exfoliate gently.

EFFECTIVE + LIGHT TEXTURE

Rivals hydroquinone with tranexamic acid, repairs with niacinamide, and exfoliates gently with lactobionic acid and mandelic acid. Ideal for morning and evening use. Apply a few drops before SPF in the morning and before moisturizer at night.

BRIGHTENS + EVENS SKIN TONE

Brightens, diminishes dullness, and promotes a more radiant, even skin tone. Also, reduces the appearance of dark spots and melasma while leaving your skin with a firm dewy finish.

DREAM CREAM

Vitamin A Retinoid

ANTI-AGING TREATMENT

Use to achieve improved texture, increased cellular turnover, collagen production, tightened skin, reduced hyperpigmentation, and softened fine lines and wrinkles.

ANTIBACTERIAL BENEFITS

Provides antibacterial properties with the inclusion of HPR, making it an excellent choice for those with acneic skin. The ester form of retinoic acid ensures higher potency without increasing the risk of irritation, making it suitable for even sensitive skin.



NIGHTLY RENEWAL+ FIRMNESS

Infused with snow mushroom, skullcap, and bakuchiol, our formula calms and renews with antioxidants and anti-inflammatory properties. Apply 1-2 pumps to dry skin after cleansing and before moisturizer. Remember your morning SPF, as retinoids may heighten sun sensitivity. This is for PM only.

DREAM DEW

Vitamin A Serum



WORKS WHILE YOU SLEEP

Apply 3-4 drops to dry skin after cleansing during the serum portion of your nightly regimen, followed by your moisturizer. Even for nighttime use, include SPF in your morning routine.

Use as a booster serum by adding a couple of drops to the Dream Cream twice a week.

MEDICAL-STRENGTH ANTI-AGING SERUM

With double the retinoid strength of most retail versions, retinol and hydroxypinacolone retinoate (HPR) work synergistically to minimize fine lines and wrinkles with minimal irritation.

COMPREHENSIVE BENEFITS

This antioxidant-rich serum not only enhances texture and tone but also boosts cellular turnover, collagen production, and tightens the skin. Experience a reduction in hyper-pigmentation and softened fine lines and wrinkles, perfect for a comprehensive anti-blemish regimen.

GLASS SKIN

Energizing Mask

INSTANT RADIANCE

Utilizing fruit-based antioxidant exfoliants and natural AHAs, it leaves your skin visibly brighter and more radiant, embodying the classic Dolce Dew glow.



SIMPLE APPLICATION

After cleansing and exfoliating, apply 2 quarter-sized dollops directly onto the face. Gently massage into the skin, let it sit for 20 minutes, and rinse. Follow with serums and moisturizer to maintain your radiant and refreshed look.

NATURAL INGREDIENTS

With key ingredients like Sugar Cane Extract (natural AHA), Citrus and fruit extracts (enzymes for collagen boost and free radical defense), and Willow Bark Extract (calming and oiliness reduction), this mask offers a powerful blend for a refined, even complexion.

DOLCE BLUE

Hydrating Mask/Moisturizer

SOOTHING RELIEF

The perfect choice to calm and alleviate irritated skin. It reduces puffiness (inflammation), providing much-needed relief.

CLEAR AND BALANCED COMPLEXION

This versatile product clears congested pores, reduces bacteria for acne-prone skin, and adds hydration.



FLEXIBLE APPLICATION

Use it as a 20-minute mask or as a moisturizer after serums, following the directions of your skin therapist.

CITRA SILK HYDRATOR

Lipid Brightening Moisturizer

LIPID CORE

A lightweight moisturizer using lipid core technology with vitamins, peptides, and illuminating ingredients. Targeting your complexion, it delivers smoother, brighter skin.

COMPLEXION ENHANCER

A lightweight moisturizer using lipid core technology with vitamins, peptides, and illuminating ingredients. Targeting your complexion, it delivers smoother, brighter skin.

PEPTIDE-POWERED REPAIR + PROTECTION

Infused with potent peptides, this hydrator actively repairs and protects skin, going beyond basic moisturizing to promote resilience against damage.

VERSATILE FOR ALL SKIN TYPES

Suitable for all skin types, apply after serums for a radiant complexion. Extend its benefits to your neck and chest for revitalized, glowing skin.



ADVANCED BRIGHTENING CREAM

*For Dull + Sun-Damaged Skin
and Hyper Pigmentation*

IMPROVES SKIN TONE

Infused with kojic acid, lactic acid, phytic acid, and rumex occidentalis extract, this formulation works together to inhibit melanin production. Tetrahydrocurcumin brightens and corrects uneven skin tone, providing a solution for skin discoloration.

CLARIFYING

Enhanced with tetrahexyldecyl ascorbate, this cream also stimulates collagen and helps to clarify while brightening.



USE DAILY

Include in your daily routine for a healthier, more radiant complexion.

ENRICHED CREAM + GF

For Dry + Aging Skin

POWERFUL ANTI-AGING FORMULA

Actively reverses and prevents signs of aging with growth factors and stem cells, ensuring a healthy, moisturized, and youthful complexion.



IMPROVE SKIN ELASTICITY

Key ingredients like ceramides, orchid stem cells, growth factors, peptides, and red marine algae work together for improved elasticity, noticeable lift, and vibrant complexion.

GOOD GREENS

Antioxidant Facial Oil

ANTIOXIDANT ARMOR

Guard your skin against environmental stressors with the protective shield of antioxidants. Let your skin breathe freely, knowing it's shielded from the daily hustle and bustle.

NATURE'S BEST INGREDIENTS

With a blend of cherry, blackberry, apricot, cranberry, and rose hips, our hydrator harnesses the power of nature to provide your skin with a revitalizing experience.



BALANCED RADIANCE

Our hydrator transforms your skincare routine, leaving you with a radiant complexion.

DEWY LIPS

Nourishing Lip Balm

**PLUMP,
HYDRATE,
+ SOFTEN**

Experience the perfect lip treatment with our product that plumps, hydrates, and leaves your lips ultra-soft.

**HYALURONIC
ACID BOOST**

Infused with hyaluronic acid, this formulation ensures plumping and intense hydration for your lips.



**VERSATILE
USAGE**

Use it as a glossy lip enhancer during the day and apply a thicker layer at night for an overnight lip mask. The compact 0.5 ml size is perfect for on-the-go pampering.