



Iron-A-Way®
Managing space with style®

NE-46

Specifications | March 2019



NE-46

Clearance Check List

Important questions to consider prior to the purchase of an NE-46.

- ☐ Do you have 46 1/4" in front of the unit for the board to drop down completely?

Ensure that you have a full 46 1/4" in front of the desired installation location for the board to drop down fully for a level ironing surface.

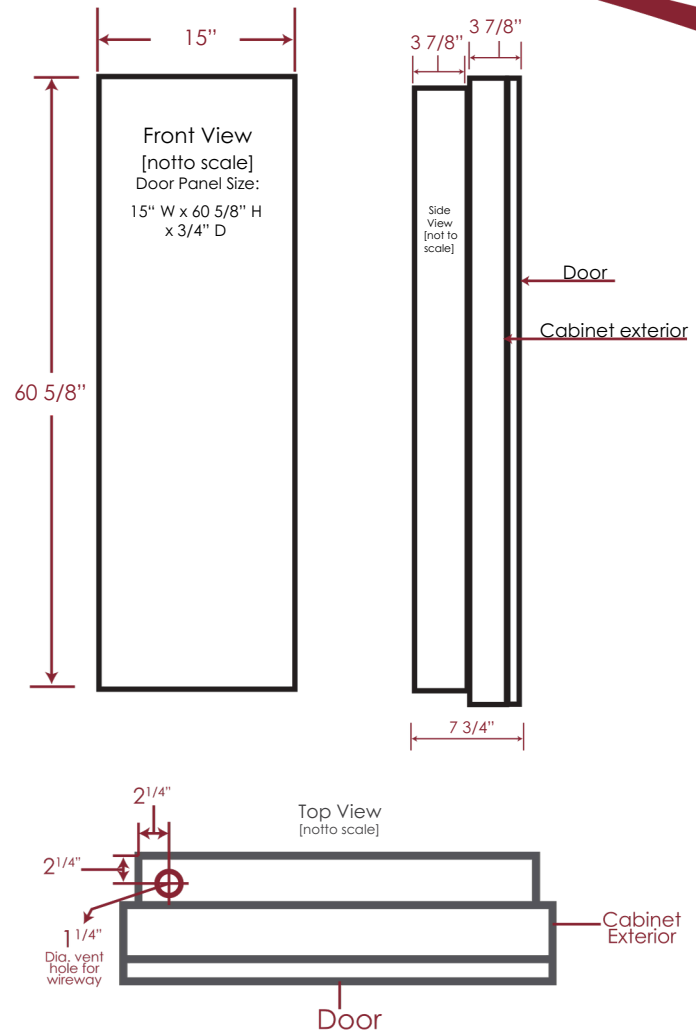
[When surface mounting, please ensure there is 50" clearance]

- ☐ Do you have 16" on the hinge side in order for the door to fully open?

The door is designed to open flush against the wall to allow proper ironing standing area next to the board, requiring 16" on the hinge side.

- ☐ Do you have at least 24" on ironing side for standing room?

Be sure to check that you have adequate standing space (at least 24") to stand beside the unit to iron.



Product Dimensions

Overall Size: Height 60 5/8" Width 15" Depth 7 3/4"

Rough-In Opening:
Height 59 7/8"
Width 14 3/8"
Depth 3 7/8"

Unit Depth Extending

Into Room*:
Recessed

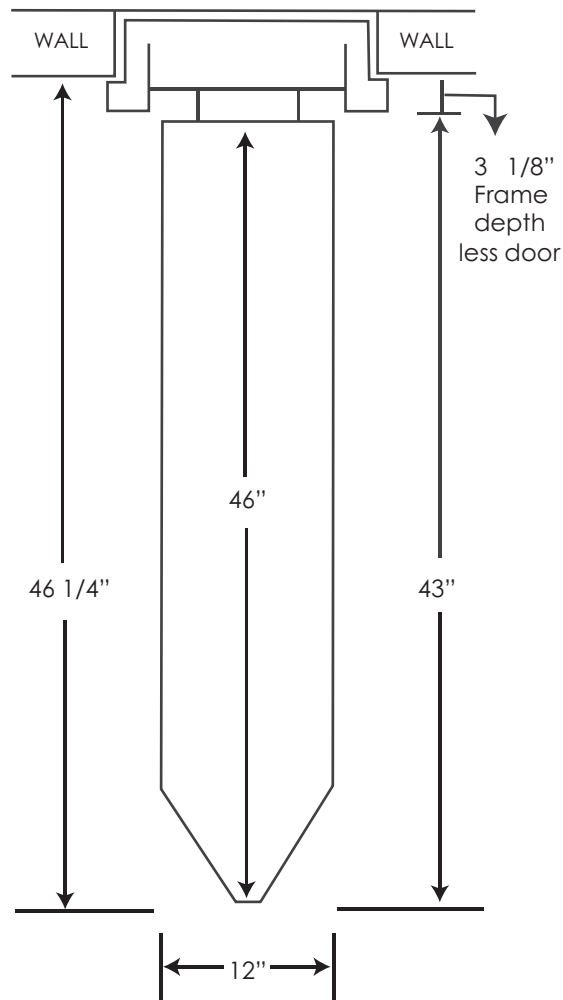
Surface Mount 7 3/4"

Unit Overlap Distance
when Recessing: 3/8"

Installation Heights

Mounting Height Above Floor	Desired Ironing Height
25"	38"
24"	37"
23"	36"
22"	35"
21"	34"
20"	33"
19"	32"

*Depth includes door



Items to Note:

Electrical Requirements for E-46: Unit requires 115/120v, 15 amp. supply line. Pigtails are provided in the bottom of wire raceway for hookup to supply line. Make entrance into knockout provided in top of raceway through left-hand vent hole.

Please note: The NE-46 is a non-electric unit and requires a nearby outlet.

Installation Height:

Use the provided Installation Height Chart on the previous page to determine your desired ironing board height.

Installation types:

Recessed: Placed into the wall, between 16" on center studs, protruding 3 7/8" into the room. It is recommended to attach a 2" x 4" cleat to studs, level with bottom of the opening to support cabinet when installing.

Surface Mount: Installed directly onto the wall, with no cutout, centered and anchored on secure stud. Will protrude 7 3/4" into room. Optional surface mount kit is available to finish sides of unit and recommended for complete installation. When surface mounting Electrical Models, use the knockout on the back of the electrical raceway rather than the top, to run the conduit into the unit. This will also require drilling a hole through the backboard for access.

Door:

Ironing center comes standard with a flat maple veneer door and a variety of additional door options. Door opens approximately 180°, flush against the wall. Please be sure to allow 16" to the side of unit for the door to open fully open.

Hinge Side:

Unit comes standard with the hinge on the right. A left side hinge can be requested when placing order.