

CFVAPE

USER MANUAL





CF VAPORIZER

An ergonomically designed, portable vaporizer with a retractable mouthpiece and a rugged hand-grip combined with a patented Enclosed Air-flow System. CF Vape represents the next generation in vaporizer technology. Compact in size and boasts 1,300 MAH power to provide you with 5 different temperature levels (355°F, 370°F, 385°F, 400°F, 415°F) of various options for different herbal blends. Enjoy an exceptional vaping experience with our CF Vape!

(EAS) VAPORIZER TECHNOLOGY



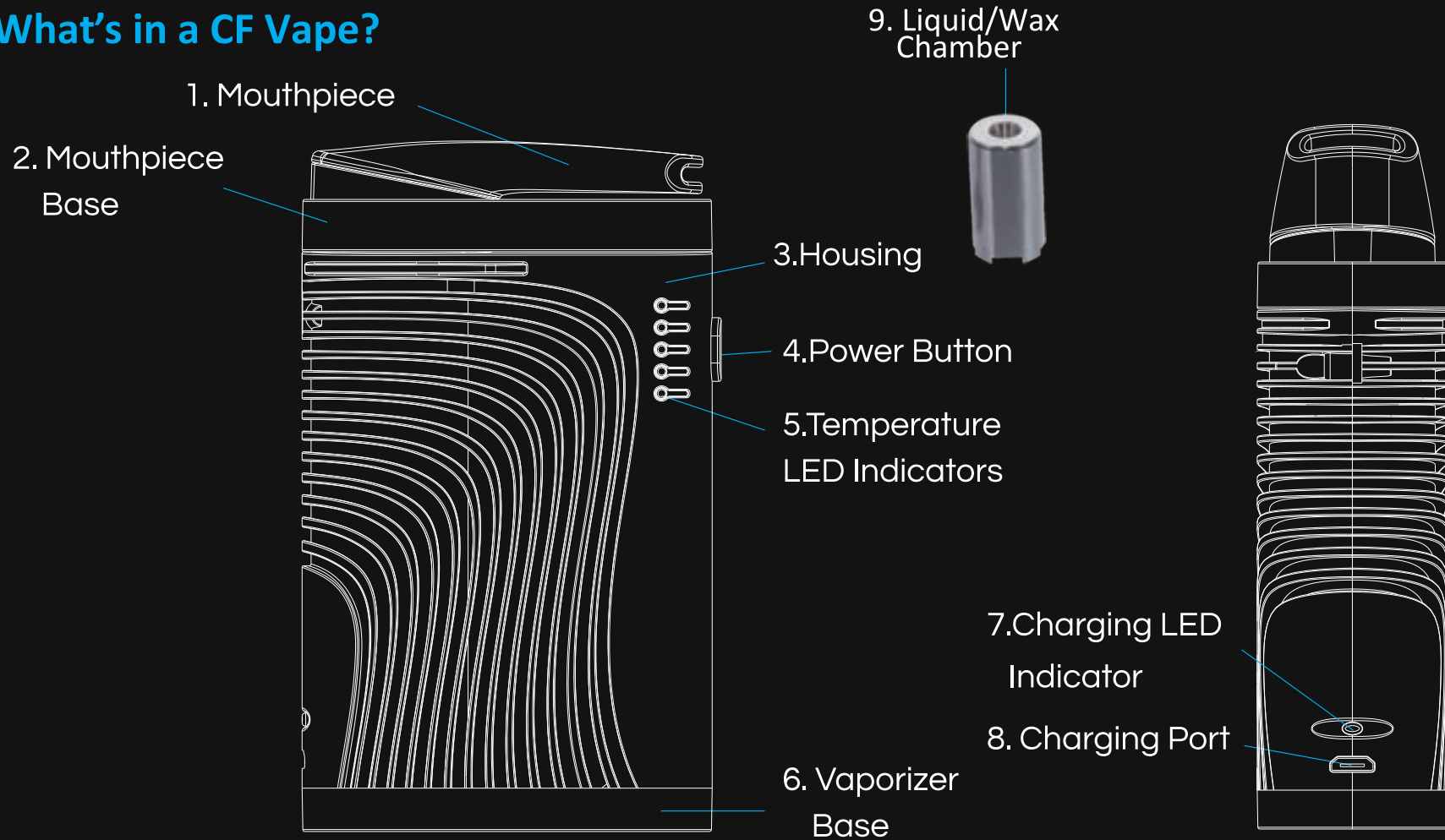
What's in the Box :

- 1 CF Dry Herb Vaporizer
- 1 Liquid/Wax Chamber (Organic Cotton)
- 3 Stainless Steel Screens
- 1 Packing Tool and Dabber
- 1 Cleaning Brush
- 1 USB Charger
- 1 User Manual

Key Features

- Next Generation Patented Enclosed-Airflow-System (EAS) Technology.
- Portable Vaporizer that is Ergonomically Designed and Easy to Hold and Operate.
- LED Indicators Stands for 5 Levels of Temperature setting: 355°F, 370°F, 385°F, 400°F, 415°F.
- Non Combustion Vaporizer.
- Fully Isolated Air Path allows for Clean and Pure Vaping.
- Compact, Rugged Design.
- Built with Medical and Food Grade Material.
- Micro 5-Pin Convenient Charging.

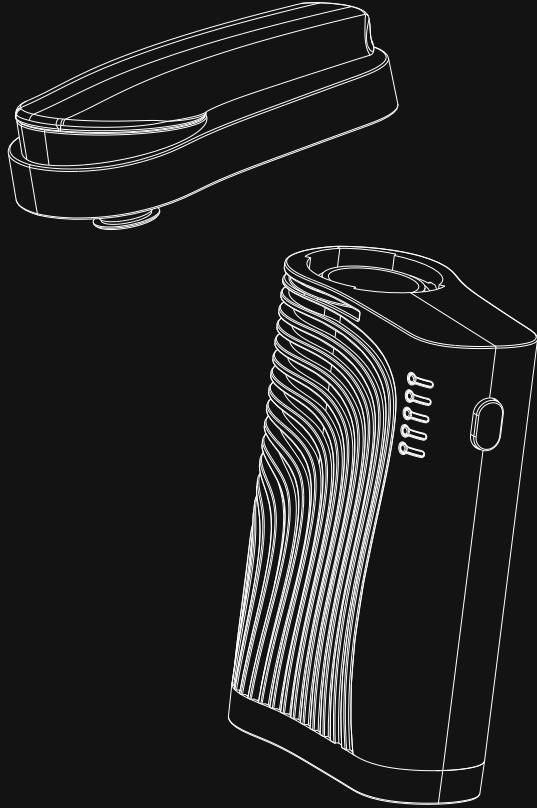
What's in a CF Vape?



Product Configuration

1. Mouthpiece - Safety and Healthy Insurance. Rotary 360°, Vape from any directions.
2. Mouthpiece Base - Made with different easy disassembled components.
3. Housing - Rugged and Ergonomically Design, Hot-Dissipation Design.
4. Power Button - One Button to Control All.
5. Temperature LED Indicators - 5 Different Temperature Levels: 355°F, 370°F, 385°F, 400°F, 415°F.
6. Vaporizer Base - Air Inflow.
7. Charging LED Indicator - Charging is Red, Fully Charged is Green.
8. Charging Port - Micro 5-Pin Port, 5V 2A is best suggested.
9. Liquid/Wax Chamber - Fill your choice of oil/wax (not at the same time).

How to Use CF with Dry Herbs?



LOAD

- Get the CF and remove mouthpiece from the device. Insert Screen into ceramic heating chamber.

Note: Screens (3 included) in the housing unit and heating chamber can be changed periodically to ensure clean vaping. Additional screens sold separately.

- Load choice blend loosely into the ceramic heating chamber. Tamp down with the dabber tool. Do not over fill. (note: do not turn on device while loading blend).
- Attach CF mouthpiece.

How to Use continued

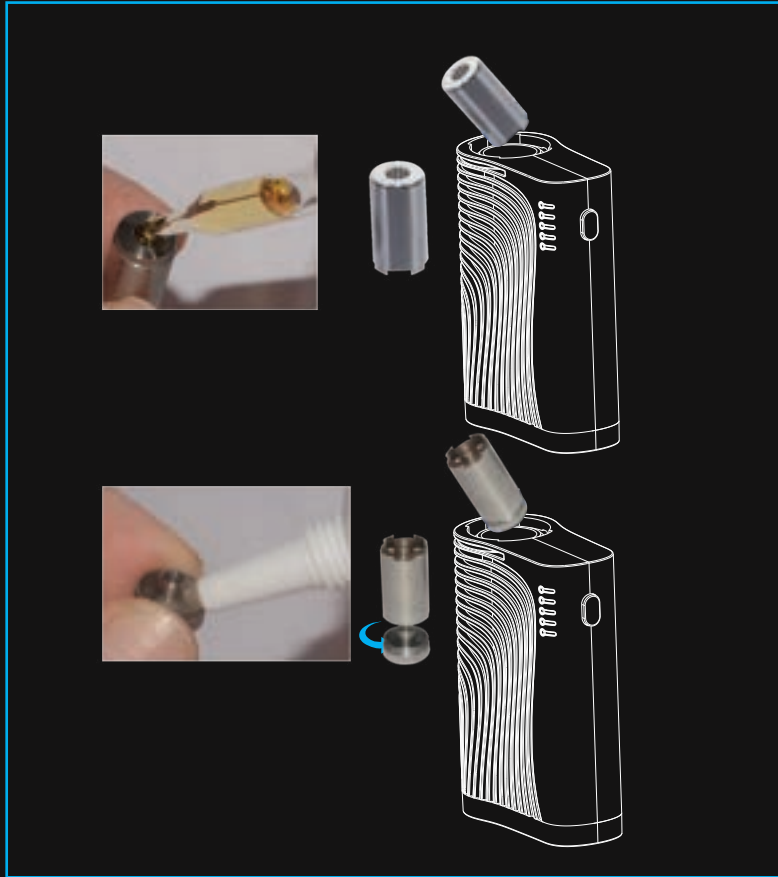
ACTIVATE

- Rapidly press Power button five times within 2 seconds to power on CF. The LED light will flash BLUE to indicate power on. The Default Setting is Level 1 the first operation.
- The LED light will flash to indicate the CF is heating.
- Let CF sit as it heats to desired temperature setting. The LED light will stop flashing and become solid BLUE, indicating that the device is ready to use. Press and hold power button for 2 seconds to advance to the next temperature level (see temperature levels guide below), 5 levels changes in a round.
- To Power Off CF, rapidly press power button 5 times within 2 seconds.

Temperature Levels Indicators:

- Level 1: 355°F (213°C)
- Level 2: 370°F (204°C)
- Level 3: 385°F (196°C)
- Level 4: 400°F (188°C)
- Level 5: 415°F (179°C)

How to Use CF with oil/wax LOAD

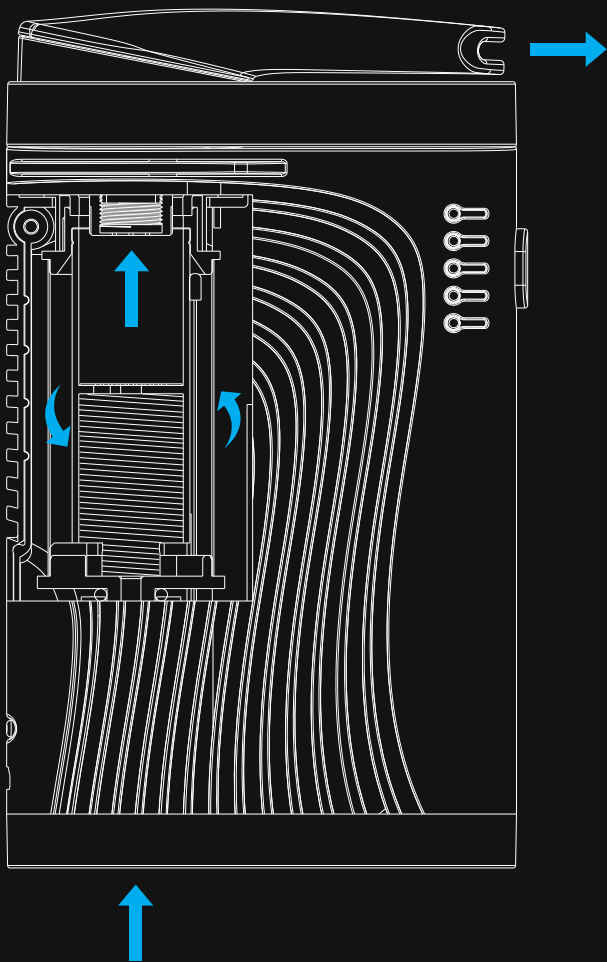


Oil

- Fill oil/wax chamber with at least 5 drops of (0.2 - 0.3ml) oil. Let oil settle for a few seconds.
- Insert oil/wax chamber into ceramic heating chamber
(note: do not turn on device while loading oil/wax chamber).

Wax

- Place concentrated oil around the recess of the lid. Screw lid on to oil/wax chamber.
- Insert oil/wax chamber with lid facing down towards ceramic heating chamber (note: do not turn on device while loading oil/wax chamber).



Fully Isolated Air Path for Clean Vaping

Air is fully directed to the heating chamber, isolating its path from the electronics. Ensuring a clean and pure vaping experience each time.

Technical Specifications

CF Vape

- Dimension: 4.07"H x 1.24"D x 2.42"W (103.5mmH x 31.5mmD x 61.5mmW)
- Temperature Levels: 5 Levels (355°F, 370°F, 385°F, 400°F, 415°F)
- Capacity: 1,300 mAh
- Output Voltage: 7.4V
- Power On/Off: Press power button 5 times consecutively
- Safety Power Duration: 5 minutes
- Safeguard: Dual PCBA/IC Protection

Cleaning and Maintenance

The mouthpiece of the CF may become clogged when used for an extended amount of time; resulting in difficult draw resistance or less vapor being released. Use the following guidelines to clean and maintain your device:

- Ceramic Heating Chamber: Use the brush tool to gently clean the walls of the heating chamber.
- Ceramic Filter: Use a fine paperclip or pin and gently insert between the holes. Push through thoroughly to clear the airway then wipe clean with a lint free cloth.
- Mouthpiece: carefully rotate and remove the mouthpiece base from device, dis-assemble the mouthpiece base as indicated in next pages, wash gently with warm water, rinse and air dry. For stubborn stains, rub gently with a damp cotton swab.

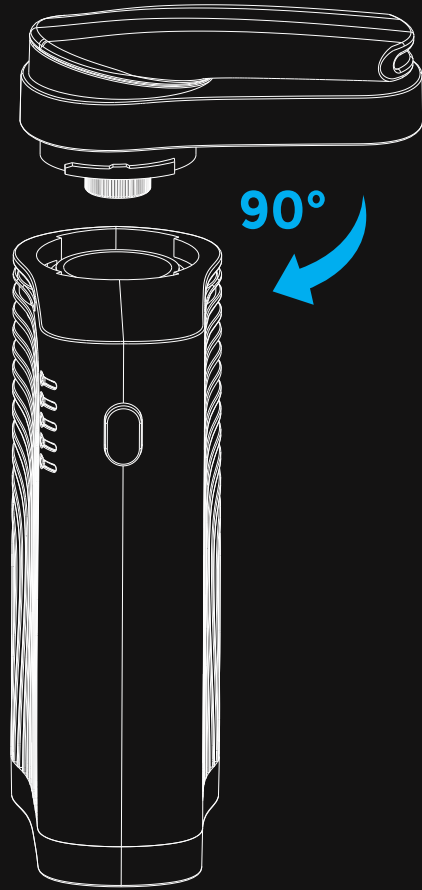
Tips

For best results, do not over-pack the ceramic heating chamber with your product. Over-packing will cause constricted air flow and uneven vaping.

After filling, use the packing tool to gently stir and aerate the product to ensure vapor is released.

Always properly prepare the device before use to reduce blockage of the mouthpiece.

How to Remove and Load Mouthpiece Components



How to Load the Mouthpiece Components:

1. Make the Mouthpiece Components and the Device in 90° Angle.
2. Press the Mouthpiece Components into the device downward as showed.
3. Then rotate the Mouthpiece Component clockwise.

How to remove the Mouthpiece Components is the above steps in reverse.

How to Disassemble the Mouthpiece Components

1. Use the Opener to pry the gap part as showed, to dis-assemble the Mouthpiece Components into two parts.

(Mouthpiece Components)

2. Use the Opener again to pry the gap part as showed, to dis-assemble the Silicone Ring.

3. Unscrew the Filter components from the Mouthpiece Base Bottom, to dis-assemble the Filter into Filter Top and Filter Base.

(Mouthpiece Base Top) (Mouthpiece)

4. Unscrew the Mouthpiece from the Mouthpiece Base Top.

(Silicone Ring)



(Mouthpiece Base Bottom)

(Filter Base) (Filter Top)

(Mouthpiece Base Bottom)

Battery and Charging

CHARGING

- Initially charge the CF for 2 to 2.5 hours. The battery will stop charging when the side LED is green. When the battery level is low, charge battery with included Micro 5-Pin USB Charger. Low battery level will be indicated with all 5 LEDs flashing 6 times repeatedly.
- Charging the CF while powered on, the side LED stay red,  when it is fully charged, it turns to green. 
- Do not use CF while charging. This will cause damage to the device.
- To prevent the device from overheating, do not leave the charger plugged in overnight.
- Do not leave charger plugged in or unattended without the device. Do not charge unit on bare carpet or rug.

BATTERY

The device contains a Lithium-Ion battery. Take caution and dispose in the correct receptacle. Do not discard in trash. Do not over charge. Do not short circuit the battery at over 200°F

Notice: Lithium Batteries are subject to degradation and reduced run time over the course of regular use while Boundless took great care in selecting premium quality long life Lithium batteries due to their non-memory features and ability to cycle 300 times preceding degradation, battery life will gradually diminish with extended use.

Safety

WARNING

Failure to follow these safety instructions could result in personal injury or damage. Users of this device do so at their own risk. Neither Boundless Technology, LLC nor its retailers assume any responsibility or liability associated with the use/misuse of the device. Boundless Technology branded products are intended for adult use and consumption only. Keep this booklet in a safe place for future reference.

DISCLAIMER

This device is designed as a mobile solution for the practitioners of aromatherapy and should be used for dry herbal blends as indicated. This device is not intended for use with illegal substances.

CHOKING HAZARD

The CF contains small parts which may be a choking hazard to small children. Keep device away from children.

Safety continued

HANDLING

- Do not drop, deform, bend, crush, puncture, incinerate, microwave, shred, paint or insert foreign objects into a Boundless Technology, LLC CF Vape.
- Do not clean CF other than instructed by Boundless Technology, LLC.
- Do not attempt to repair or modify the CF Vape yourself.
- Do not use a damaged CF Vape charger or non Boundless Technology charger. Incompatible chargers may carry different voltage, which may be a fire hazard. Only use the charger provided. Failure to do so will void the limited warranty offered on Boundless Technology products.
- Use caution when handling CF, the heating chamber area is hot when the device is powered on. Refrain from direct contact with the main heating chamber when hot. Do not leave the device unattended when it is powered on or while the device is still hot.

Safety Features

SLEEP PROTECTION

The device is equipped with a safety sleep mode. When the device is powered on and after 6 minutes vaping, it will go into sleep mode to avoid over-use. Press and Hold the power button for 3 seconds to resume vaping.

MEMORY FUNCTION

The device features a smart memory function. It will memorize the data of current use before powering off. When powered on for next use, the last setting will be displayed.

SMART TEMPERATURE LEVELS

The CF is equipped with 5 temperature levels (355°F, 370°F, 385°F, 400°F, 415°F)





BOUNDLESS
VAPE TECHNOLOGY