

m o o o i

Nut Dining Chair

MARCEL WANDERS STUDIO



Sitting in the warm embrace of the Nut dining chair by will make you feel protected and as precious as the most beautiful pearl in the sea. The exquisite flavour of its design and the rich pattern of its textiles distinguish it from the mass.

Detailing



The Nut Dining Chair is made of solid oak. Go nuts and place the chair wherever you want, the Nut Dining Chair fits in every interior.

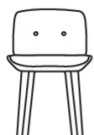
Nut Dining Chair

Dimensions

49cm | 19,3"



52cm | 20,5"



48cm | 18,9"



76cm | 29,9"

Product

WIDTH 49cm | 19.3"

HEIGHT 76cm | 29.9"

DEPTH 52cm | 20.5"

Packaging

WIDTH 57cm | 22.4"

HEIGHT 82cm | 32.3"

CUBAGE 0.25m³ | 9ft³

LENGTH 54.5cm | 21.5"

WEIGHT 15.3kg | 33.73lbs

Technical

MATERIAL

Bent plywood with oak veneer, solid oak legs, CMHR Foam.

SEAT DEPTH

47cm | 18.5"

SEAT DEPTH 2

35cm | 13.8"

SEAT HEIGHT

47cm | 18.5"

SEAT HEIGHT 2

44cm | 17.3"

SEAT WIDTH

49cm | 19.3"

SEAT WIDTH 2

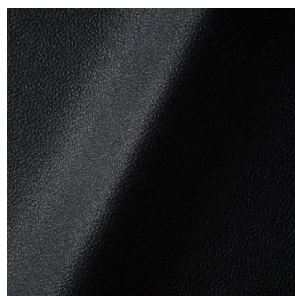
44cm | 17.3"

SEATING CAPACITY

1

Upholstery

ABBRACCI (available in 5 colours)



COMPOSITION

100% PES

ABRASION

30000 martindale
lightfastness 3 - 4
pilling 5

FIRE RESISTANCE

BS 5852 - Ignition source
0 (Cigarette)
BS 5852 - Ignition source
1 (Match flame equivalent)
EN 1021-1 (Cigarette)
EN 1021-2 (Match)
TB 117-2013

CANVAS 2 (available in 45 colours)



COMPOSITION

90% WO, 10% PA

ABRASION

100000 martindale
lightfastness 6
pilling 4

FIRE RESISTANCE

BS 5852 - Ignition source
1 (Match flame equivalent)
BS 5852 - Ignition source
0 (Cigarette)
TB 117-2013
EU Ecolabel

DENIM (available in 3 colours)



COMPOSITION

100% CO

ABRASION

70000 martindale
lightfastness 4
pilling 3 - 4

FIRE RESISTANCE

BS5852 part 1 on request
US. Cal. Bull. 117-2013

DIVINA 3 (available in 56 colours)



COMPOSITION

100% WO

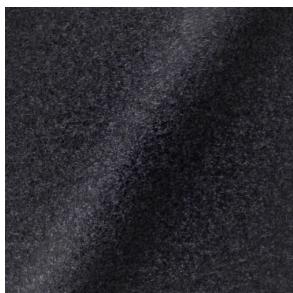
ABRASION

45000 martindale
lightfastness 7
pilling 3

FIRE RESISTANCE

BS 5852 - Ignition source
0 (Cigarette)
BS 5852 - Ignition source
5 (Crib 5)
BS 5852 - Ignition source
1 (Match flame equivalent)
EN 1021-1 (Cigarette)
EN 1021-2 (Match)
TB 117-2013
EU Ecolabel

DIVINA MD (available in 27 colours)



COMPOSITION

100% WO

ABRASION

45000 martindale
lightfastness 6
pilling 3

FIRE RESISTANCE

BS 5852 - Ignition source
0 (Cigarette)
BS 5852 - Ignition source
5 (Crib 5)
BS 5852 - Ignition source
1 (Match flame equivalent)
EN 1021-1 (Cigarette)
EN 1021-2 (Match)
EU Ecolabel

DIVINA MELANGE 3 (available in 60 colours)



COMPOSITION

100% WO

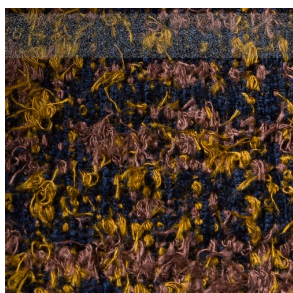
ABRASION

45000 martindale
lightfastness 6 - 7
pilling 3

FIRE RESISTANCE

BS 5852 - Ignition source
0 (Cigarette)
BS 5852 - Ignition source
5 (Crib 5)
BS 5852 - Ignition source
1 (Match flame equivalent)
EN 1021-1 (Cigarette)
EN 1021-2 (Match)
TB 117-2013
EU Ecolabel

Bearded Leopard (available in 3 colours)



COMPOSITION

77% CV, 15% PES, 7% CO,
1% PA

ABRASION

15000 martindale
lightfastness 4 - 6
pilling 4

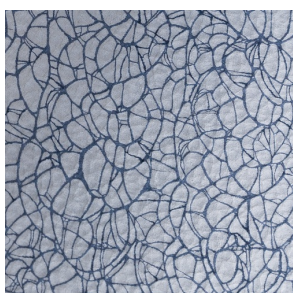
FIRE RESISTANCE

BS5852 part 1 on request
US. Cal. Bull. 117-2013

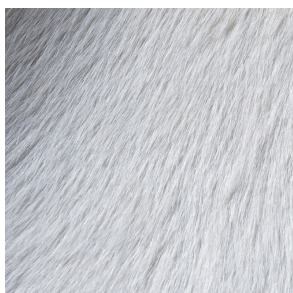
Bison (available in 1 colours)



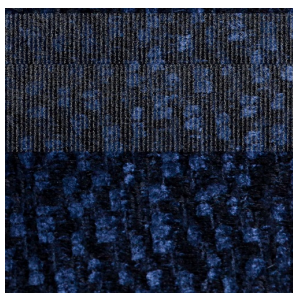
Armoured Boar, Crackle (available in 1 colours)



Armoured Boar, Hairy (available in 1 colours)



Calligraphy Bird (available in 4 colours)



COMPOSITION

64% CV, 21% PES, 15%
CO

ABRASION

50000 martindale
lightfastness 4 - 6
pilling 5

FIRE RESISTANCE

BS5852 part 1 on request
US. Cal. Bull. 117-2013

Dodo Pavone (available in 3 colours)



COMPOSITION
12% CO, 88% PES

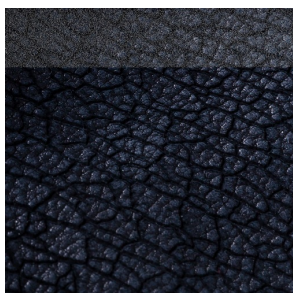
ABRASION
40000 martindale
lightfastness 5
pilling 4 - 5

FIRE RESISTANCE
BS5852 part 1 on request
US. Cal. Bull. 117-2013

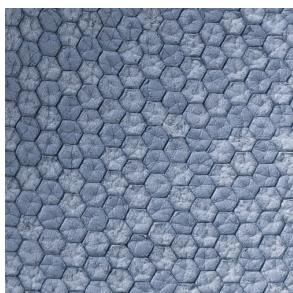
Dwarf Rhino Buffed (available in 1 colours)



Dwarf Rhino, Crackle (available in 1 colours)



Flying Coral Fish (available in 1 colours)



Menagerie of Extinct Animals (available in 2 colours)



COMPOSITION
100% PES

ABRASION
50000 martindale
lightfastness 4 - 6
pilling 5

FIRE RESISTANCE
BS5852 part 1 on request
US. Cal. Bull. 117-2013

Rendezvous Tokyo Blue (available in 1 colours)



COMPOSITION
100% PES

ABRASION
50000 martindale
lightfastness 4 - 6
pilling 5

FIRE RESISTANCE
BS5852 part 1 on request
US. Cal. Bull. 117-2013

Blushing Sloth Melange Mohair (available in 1 colours)



COMPOSITION
85% WV, 15% WM

ABRASION
15000 martindale
lightfastness 4 - 6
pilling 2 - 3

FIRE RESISTANCE
BS5852 part 1 on request
US. Cal. Bull. 117-2013

Blushing Sloth Woolly Mohair (available in 1 colours)



COMPOSITION
24% PES, 15% PA, 8% CO,
24% WM, 29% WV

ABRASION
40000 martindale
lightfastness 4 - 6
pilling 3 - 4

FIRE RESISTANCE
BS5852 part 1 on request
US. Cal. Bull. 117-2013

FIORD (available in 27 colours)



COMPOSITION

92% WV, 8% PA

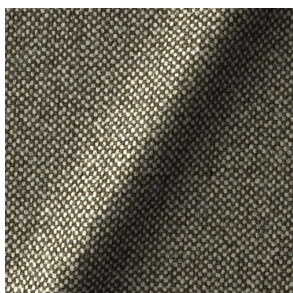
ABRASION

60000 martindale
lightfastness 6
pilling 4 - 5

FIRE RESISTANCE

EN 1021-1 (Cigarette)
EN 1021-2 (Match)
BS 5852 - Ignition source
0 (Cigarette)
BS 5852 - Ignition source
1 (Match flame equivalent)

HALLINGDAL 65 (available in 58 colours)



COMPOSITION

30% CV, 70% WV

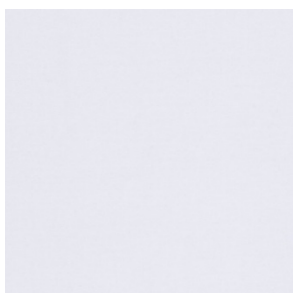
ABRASION

100000 martindale
lightfastness 7
pilling 3 - 4

FIRE RESISTANCE

BS 5852 - Ignition source
0 (Cigarette)
BS 5852 - Ignition source
5 (Crib 5)
BS 5852 - Ignition source
1 (Match flame equivalent)
EN 1021-1 (Cigarette)
EN 1021-2 (Match)
TB 117-2013
EU Ecolabel

HARALD 3 (available in 30 colours)



COMPOSITION

100% CO

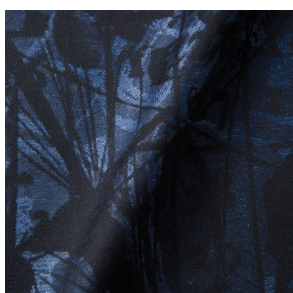
ABRASION

100000 martindale
lightfastness 5
pilling 4 - 5

FIRE RESISTANCE

EN 1021-1 (Cigarette)

JACQUARD, ANDAZ (available in 1 colours)



COMPOSITION

34% CO, 30% CV, 24%
LI, 12% PA

ABRASION

25000 martindale
lightfastness 4 - 6
pilling 4 - 5

FIRE RESISTANCE

BS 5852 - Ignition source
0 (Cigarette)
BS 5852 - Ignition source
1 (Match flame equivalent)
EN 1021-1 (Cigarette)
EN 1021-2 (Match)

JACQUARD, FRESC (available in 1 colours)



COMPOSITION

52% CV, 38% CO, 10% LI

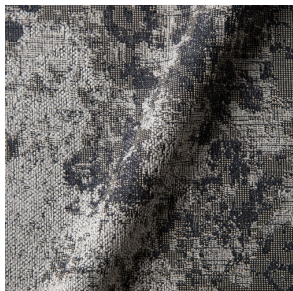
ABRASION

15000 martindale
lightfastness 3 - 4
pilling 2 - 3

FIRE RESISTANCE

BS 5852 - Ignition source
0 (Cigarette)
EN 1021-1 (Cigarette)
EN 1021-2 (Match)

JACQUARD, OLD (available in 2 colours)



COMPOSITION

52% CV, 38% CO, 10% LI

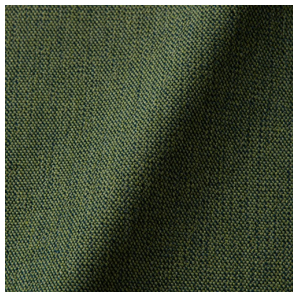
ABRASION

15000 martindale
lightfastness 3 - 4
pilling 2 - 3

FIRE RESISTANCE

BS 5852 - Ignition source
0 (Cigarette)
EN 1021-1 (Cigarette)
EN 1021-2 (Match)

JUSTO (available in 10 colours)



COMPOSITION

15% CO, 35% PC, 10% PA,
40% CV

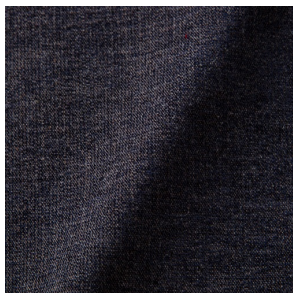
ABRASION

50000 martindale
lightfastness 5
pilling 4

FIRE RESISTANCE

EN 1021-1 (Cigarette)
EN 1021-2 (Match)
TB 117-2013

LISCIO (available in 11 colours)



COMPOSITION

35% WO, 35% CV, 21%
CO, 9% PA

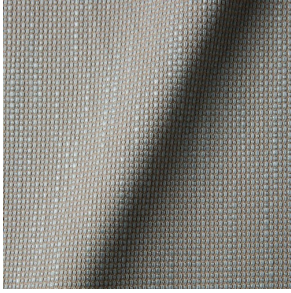
ABRASION

30000 martindale
lightfastness 4 - 6
pilling 4

FIRE RESISTANCE

TB 117-2013

MACCHEDIL GREZZO (available in 10 colours)



COMPOSITION

47% CO, 20% CV, 18%
PA, 8% LI, 5% PC

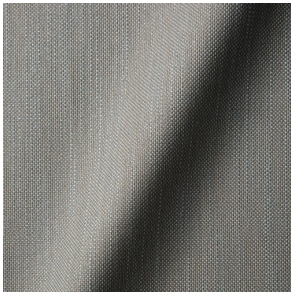
ABRASION

15000 martindale
lightfastness 3 - 5
pilling 4 - 5

FIRE RESISTANCE

BS5852 part 1 on request

MACCHEDIL SOTTILE (available in 10 colours)



COMPOSITION

49% CV, 24% PES, 21% LI,
6% CO

ABRASION

20000 martindale
lightfastness 3 - 5
pilling 2 - 3

FIRE RESISTANCE

BS5852 part 1 on request

MANGA (available in 4 colours)



COMPOSITION

29% PES, 71% CO

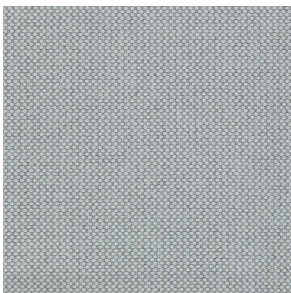
ABRASION

40000 martindale
lightfastness 4 - 5

FIRE RESISTANCE

BS 5852 - Ignition source
0 (Cigarette)
BS 5852 - Ignition source
1 (Match flame equivalent)

MERIT (available in 43 colours)



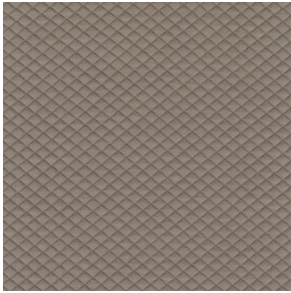
COMPOSITION

24% PES, 76%

ABRASION

85000 martindale
lightfastness 7
pilling 4

MOSAIC 2 (available in 15 colours)



COMPOSITION

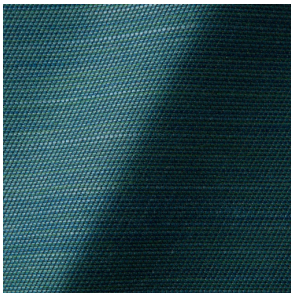
58% PES, 27% WV, 9% PA,
6% EA

ABRASION

100000 martindale
lightfastness 6 - 7
pilling 4 - 5

OIL WOVEN (available in 1 colours)

ORAY RAY (available in 15 colours)



COMPOSITION

39% LI, 38% CV, 15% PE,
8% CO

ABRASION

30000 martindale
pilling 4 - 5

FIRE RESISTANCE

BS 5852 - Ignition source
0 (Cigarette)
BS 5852 - Ignition source
1 (Match flame equivalent)
TB 117-2013

ORAY RONAN (available in 5 colours)



COMPOSITION

39% LI, 38% CV, 15% PE,
8% CO

ABRASION

30000 martindale
pilling 4 - 5

FIRE RESISTANCE

BS 5852 - Ignition source
0 (Cigarette)
BS 5852 - Ignition source
1 (Match flame equivalent)
TB 117-2013

REMIX 3 (available in 53 colours)



COMPOSITION

10% PA, 90% WV

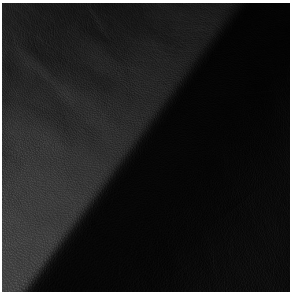
ABRASION

100000 martindale
lightfastness 5
pilling 4

FIRE RESISTANCE

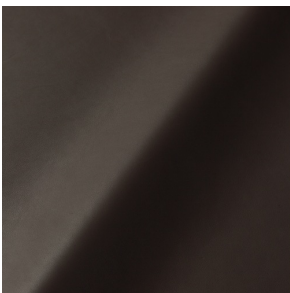
BS5852 part 1
US. Cal. Bull. 117-2013

SAVANNE (available in 3 colours)



FIRE RESISTANCE
EN 1021-1 (Cigarette)
EN 1021-2 (Match)
TB 117-2013
OEKO-TEX

SHADE (available in 6 colours)



ABRASION
lightfastness 3 - 4

FIRE RESISTANCE
EN 1021-1 (Cigarette)
EN 1021-2 (Match)
TB 117-2013

SOLIS (available in 9 colours)

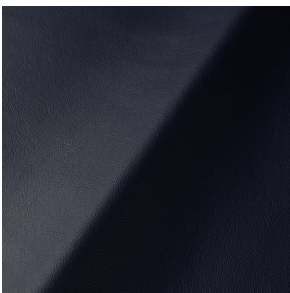


COMPOSITION
60% WO, 30% PES, 2%
PA, 3% PC

ABRASION
40000 martindale
lightfastness 5
pilling 3 - 4

FIRE RESISTANCE
EN 1021-1 (Cigarette)
EN 1021-2 (Match)
TB 117-2013

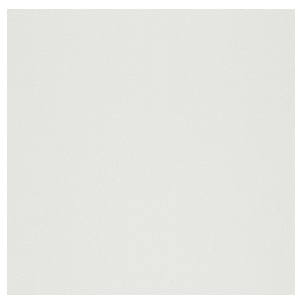
SPECTRUM (available in 11 colours)



ABRASION
lightfastness 6 - 6

FIRE RESISTANCE
EN 1021-1 (Cigarette)
EN 1021-2 (Match)
TB 117-2013
OEKO-TEX

STEELCUT 2 (available in 37 colours)



COMPOSITION

90% WV, 10% PA

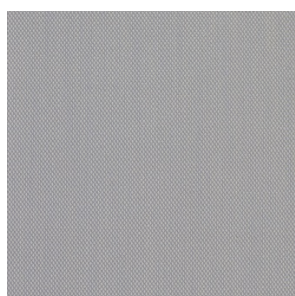
ABRASION

100000 martindale
lightfastness 6
pilling 3 - 4

FIRE RESISTANCE

BS 5852 - Ignition source
0 (Cigarette)
BS 5852 - Ignition source
1 (Match flame equivalent)
EN 1021-1 (Cigarette)
EN 1021-2 (Match)
TB 117-2013
EU Ecolabel

STEELCUT TRIO 3 (available in 54 colours)



COMPOSITION

90% WV, 10% PA

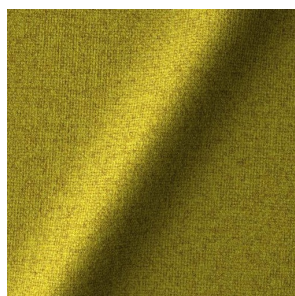
ABRASION

100000 martindale
lightfastness 5
pilling 4

FIRE RESISTANCE

BS 5852 - Ignition source
0 (Cigarette)
BS 5852 - Ignition source
1 (Match flame equivalent)
EN 1021-1 (Cigarette)
EN 1021-2 (Match)
EU Ecolabel

TONICA 2 (available in 39 colours)



COMPOSITION

100% WV

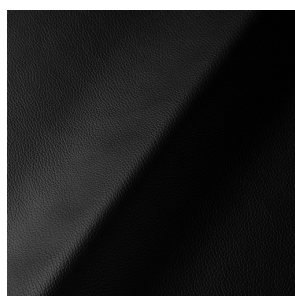
ABRASION

45000 martindale
lightfastness 6 - 7
pilling 4 - 5

FIRE RESISTANCE

EN 1021-1 (Cigarette)
EN 1021-2 (Match)

ULTRA (available in 6 colours)



ABRASION

lightfastness 6 - 7

FIRE RESISTANCE

EN 1021-1 (Cigarette)
EN 1021-2 (Match)
TB 117-2013
ANSI/BIFMA M7.1 (Total
Volatile Organic
Compounds)

VESPER (available in 8 colours)



COMPOSITION

10% CO, 40% LI, 10% PA,
10% PES, 30% CV

ABRASION

40000 martindale
lightfastness 5
pilling 4

FIRE RESISTANCE

EN 1021-1 (Cigarette)
EN 1021-2 (Match)
TB 117-2013
