

m o o o i[®]



Lolita

by Nika Zupanc

Who is afraid of pink? My imagination chases female archetypes intentionally. Frivolous, even naive objects are my favorite victims. And when, during such a process, I manage to be creative in an evidently reserved way, I then touch the purest meaning of my work and frivolity becomes timeless elegance.

Designer

Nika Zupanc

Year of design

2008

m o o o i[®]

Material

Injection moulded ABS shade, polyurethane base

m o o o i[®]

detailing

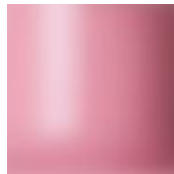


The Lolita shade is characterized by a dainty polka dot edge.
Inside the Lolita shade lies a warm white glow.

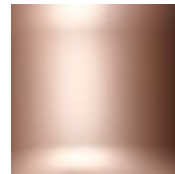
colours



white
RAL 9016



pink
RAL 3015



London Rosé

technical CE



E27 x I
20 W MAX type A
Cable length 4M (transparent)
Cable length 10M on request



CE version comes with a steel
canopy, same color as the shade

m o o o i[®]

technical usa canada mexico



E26 x I
25 W MAX type A
Cable length 4M (black)
Cable length 10M on request



cULus version comes with a steel chrome canopy

packaging

H 46 cm | 18.1"
W 46 cm | 18.1"
D 58 cm | 22.8"

Colli 1/1
Product weight:
1,4 KG | 3,1 lb
With packaging:
3,3 KG | 7,3 lb

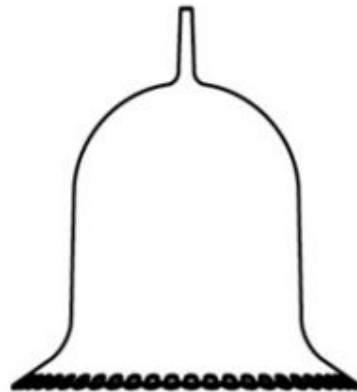
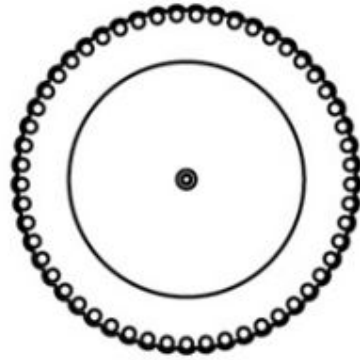
cleaning instructions

Can be effectively cleaned using a regular household dust cloth or feather duster. Lightly dust inbetween each component when the lamps are not in use. Mooui recommends always reading the label of any cleaning products you wish to use on or near any item from the Mooui collection. For further information on how to clean this product please contact your nearest Mooui agent or dealer which can be located through our website.

m o o o i[®]

dimensions

37cm | 14.6"



40cm | 15.7"