

m o o o i

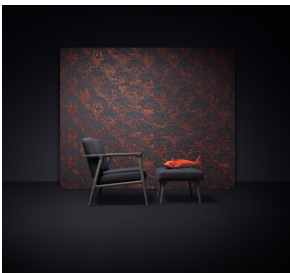
Zio Lounge Chair

MARCEL WANDERS STUDIO



Lean back, close your eyes, relax your arms on the smooth armrests and grant yourself the time to drift your imagination away, beyond your surroundings, into the street, beyond the starry night. Living your fantasies is easy while cosily sitting in the solid softness of Marcel Wanders' Zio lounge chair!

Detailing



The Zio Lounge Chair unites the strong, yet light look of stained oak with the beauty of organic shapes, finished off with straight modern cuts.

Zio Lounge Chair

Dimensions

77cm | 30.3"



Product

WIDTH 77cm | 30.3"

HEIGHT 76cm | 29.9"

DEPTH 85cm | 33.5"

Packaging

WIDTH 84.5cm | 33.3"

HEIGHT 90cm | 35.4"

CUBAGE 0.64m³ | 22.69ft³

LENGTH 84.5cm | 33.3"

WEIGHT 20.8kg | 45.86lbs

Technical

ADDITIONAL

Frame available in different stain colours.

MATERIAL

Solid Oak frame, CMHR foam

HEIGHT ARMREST

61cm | 24"

SEAT DEPTH 2

51cm | 20.1"

SEAT HEIGHT 2

36cm | 14.2"

SEAT WIDTH 2

63cm | 24.8"

SEAT DEPTH

58cm | 22.8"

SEAT HEIGHT

41cm | 16.1"

SEAT WIDTH

67cm | 26.4"

Upholstery

ABBRACCI (available in 5 colours)



COMPOSITION
100% PES

ABRASION
30000 martindale
lightfastness 3 - 4
pilling 5

FIRE RESISTANCE
BS 5852 - Ignition source
0 (Cigarette)
BS 5852 - Ignition source
1 (Match flame equivalent)
EN 1021-1 (Cigarette)
EN 1021-2 (Match)
TB 117-2013

CANVAS 2 (available in 45 colours)

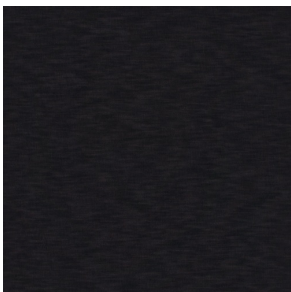


COMPOSITION
90% WO, 10% PA

ABRASION
100000 martindale
lightfastness 6
pilling 4

FIRE RESISTANCE
BS 5852 - Ignition source
1 (Match flame equivalent)
BS 5852 - Ignition source
0 (Cigarette)
TB 117-2013
EU Ecolabel

DENIM (available in 3 colours)

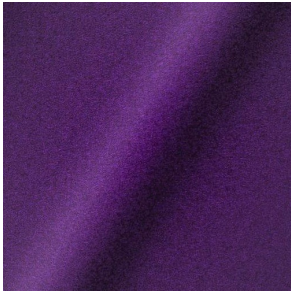


COMPOSITION
100% CO

ABRASION
70000 martindale
lightfastness 4
pilling 3 - 4

FIRE RESISTANCE
BS5852 part 1 on request
US. Cal. Bull. 117-2013

DIVINA 3 (available in 56 colours)



COMPOSITION
100% WO

ABRASION
45000 martindale
lightfastness 7
pilling 3

FIRE RESISTANCE
BS 5852 - Ignition source
0 (Cigarette)
BS 5852 - Ignition source
5 (Crib 5)
BS 5852 - Ignition source
1 (Match flame equivalent)
EN 1021-1 (Cigarette)
EN 1021-2 (Match)
TB 117-2013
EU Ecolabel

DIVINA MD (available in 27 colours)



COMPOSITION
100% WO

ABRASION
45000 martindale
lightfastness 6
pilling 3

FIRE RESISTANCE
BS 5852 - Ignition source
0 (Cigarette)
BS 5852 - Ignition source
5 (Crib 5)
BS 5852 - Ignition source
1 (Match flame equivalent)
EN 1021-1 (Cigarette)
EN 1021-2 (Match)
EU Ecolabel

DIVINA MELANGE 3 (available in 60 colours)

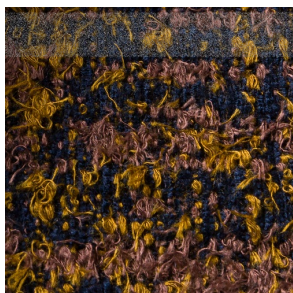


COMPOSITION
100% WO

ABRASION
45000 martindale
lightfastness 6 - 7
pilling 3

FIRE RESISTANCE
BS 5852 - Ignition source
0 (Cigarette)
BS 5852 - Ignition source
5 (Crib 5)
BS 5852 - Ignition source
1 (Match flame equivalent)
EN 1021-1 (Cigarette)
EN 1021-2 (Match)
TB 117-2013
EU Ecolabel

Bearded Leopard (available in 3 colours)



COMPOSITION

77% CV, 15% PES, 7% CO,
1% PA

ABRASION

15000 martindale
lightfastness 4 - 6
pilling 4

FIRE RESISTANCE

BS5852 part 1 on request
US. Cal. Bull. 117-2013

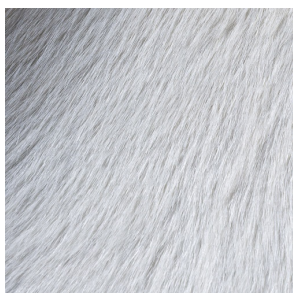
Bison (available in 1 colours)



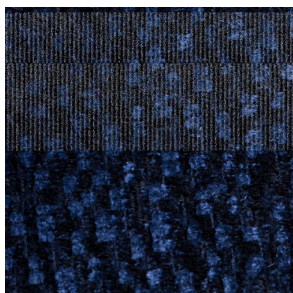
Armoured Boar, Crackle (available in 1 colours)



Armoured Boar, Hairy (available in 1 colours)



Calligraphy Bird (available in 4 colours)



COMPOSITION

64% CV, 21% PES, 15%
CO

ABRASION

50000 martindale
lightfastness 4 - 6
pilling 5

FIRE RESISTANCE

BS5852 part 1 on request
US. Cal. Bull. 117-2013

Dodo Pavone (available in 3 colours)



COMPOSITION

12% CO, 88% PES

ABRASION

40000 martindale
lightfastness 5
pilling 4 - 5

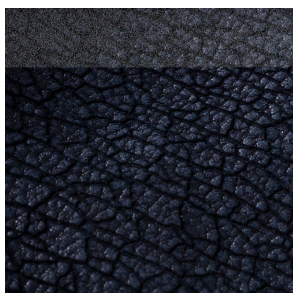
FIRE RESISTANCE

BS5852 part 1 on request
US. Cal. Bull. 117-2013

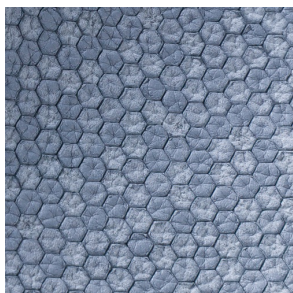
Dwarf Rhino Buffed (available in 1 colours)



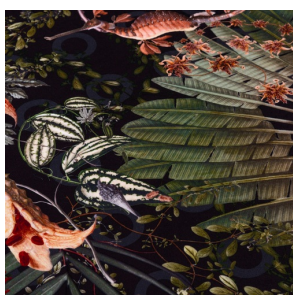
Dwarf Rhino, Crackle (available in 1 colours)



Flying Coral Fish (available in 1 colours)



Menagerie of Extinct Animals (available in 2 colours)



COMPOSITION

100% PES

ABRASION

50000 martindale
lightfastness 4 - 6
pilling 5

FIRE RESISTANCE

BS5852 part 1 on request
US. Cal. Bull. 117-2013

Rendezvous Tokyo Blue (available in 1 colours)



COMPOSITION

100% PES

ABRASION

50000 martindale
lightfastness 4 - 6
pilling 5

FIRE RESISTANCE

BS5852 part 1 on request
US. Cal. Bull. 117-2013

Blushing Sloth Melange Mohair (available in 1 colours)



COMPOSITION

85% WV, 15% WM

ABRASION

15000 martindale
lightfastness 4 - 6
pilling 2 - 3

FIRE RESISTANCE

BS5852 part 1 on request
US. Cal. Bull. 117-2013

Blushing Sloth Woolly Mohair (available in 1 colours)



COMPOSITION

24% PES, 15% PA, 8% CO,
24% WM, 29% WV

ABRASION

40000 martindale
lightfastness 4 - 6
pilling 3 - 4

FIRE RESISTANCE

BS5852 part 1 on request
US. Cal. Bull. 117-2013

FIORD (available in 27 colours)



COMPOSITION

92% WV, 8% PA

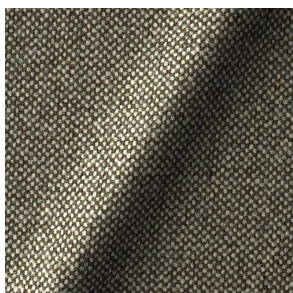
ABRASION

60000 martindale
lightfastness 6
pilling 4 - 5

FIRE RESISTANCE

EN 1021-1 (Cigarette)
EN 1021-2 (Match)
BS 5852 - Ignition source
0 (Cigarette)
BS 5852 - Ignition source
1 (Match flame equivalent)

HALLINGDAL 65 (available in 58 colours)



COMPOSITION

30% CV, 70% WV

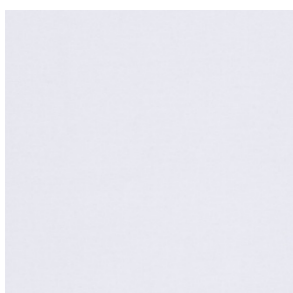
ABRASION

100000 martindale
lightfastness 7
pilling 3 - 4

FIRE RESISTANCE

BS 5852 - Ignition source
0 (Cigarette)
BS 5852 - Ignition source
5 (Crib 5)
BS 5852 - Ignition source
1 (Match flame equivalent)
EN 1021-1 (Cigarette)
EN 1021-2 (Match)
TB 117-2013
EU Ecolabel

HARALD 3 (available in 30 colours)



COMPOSITION

100% CO

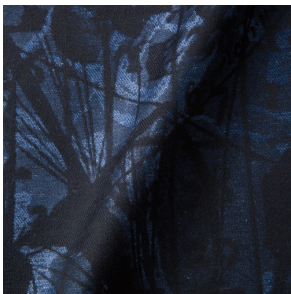
ABRASION

100000 martindale
lightfastness 5
pilling 4 - 5

FIRE RESISTANCE

EN 1021-1 (Cigarette)

JACQUARD, ANDAZ (available in 1 colours)



COMPOSITION

34% CO, 30% CV, 24%
LI, 12% PA

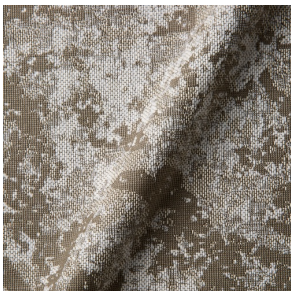
ABRASION

25000 martindale
lightfastness 4 - 6
pilling 4 - 5

FIRE RESISTANCE

BS 5852 - Ignition source
0 (Cigarette)
BS 5852 - Ignition source
1 (Match flame equivalent)
EN 1021-1 (Cigarette)
EN 1021-2 (Match)

JACQUARD, FRESC (available in 1 colours)



COMPOSITION

52% CV, 38% CO, 10% LI

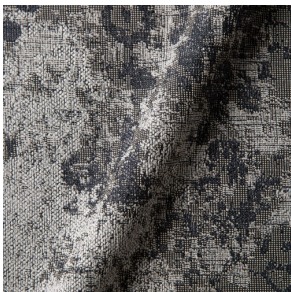
ABRASION

15000 martindale
lightfastness 3 - 4
pilling 2 - 3

FIRE RESISTANCE

BS 5852 - Ignition source
0 (Cigarette)
EN 1021-1 (Cigarette)
EN 1021-2 (Match)

JACQUARD, OLD (available in 2 colours)



COMPOSITION

52% CV, 38% CO, 10% LI

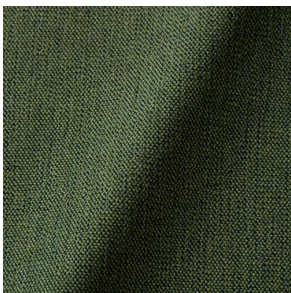
ABRASION

15000 martindale
lightfastness 3 - 4
pilling 2 - 3

FIRE RESISTANCE

BS 5852 - Ignition source
0 (Cigarette)
EN 1021-1 (Cigarette)
EN 1021-2 (Match)

JUSTO (available in 10 colours)



COMPOSITION

15% CO, 35% PC, 10% PA,
40% CV

ABRASION

50000 martindale
lightfastness 5
pilling 4

FIRE RESISTANCE

EN 1021-1 (Cigarette)
EN 1021-2 (Match)
TB 117-2013

LISCIO (available in 11 colours)



COMPOSITION

35% WO, 35% CV, 21%
CO, 9% PA

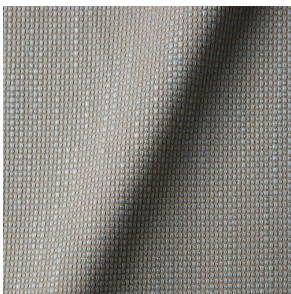
ABRASION

30000 martindale
lightfastness 4 - 6
pilling 4

FIRE RESISTANCE

TB 117-2013

MACCHEDIL GREZZO (available in 10 colours)



COMPOSITION

47% CO, 20% CV, 18%
PA, 8% LI, 5% PC

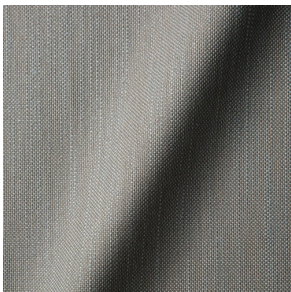
ABRASION

15000 martindale
lightfastness 3 - 5
pilling 4 - 5

FIRE RESISTANCE

BS5852 part 1 on request

MACCHEDIL SOTTILE (available in 10 colours)



COMPOSITION

49% CV, 24% PES, 21% LI,
6% CO

ABRASION

20000 martindale
lightfastness 3 - 5
pilling 2 - 3

FIRE RESISTANCE

BS5852 part 1 on request

MANGA (available in 4 colours)



COMPOSITION

29% PES, 71% CO

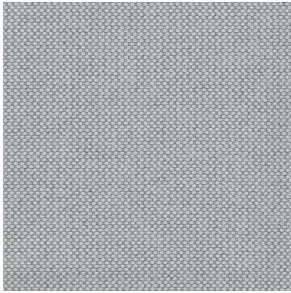
ABRASION

40000 martindale
lightfastness 4 - 5

FIRE RESISTANCE

BS 5852 - Ignition source
0 (Cigarette)
BS 5852 - Ignition source
1 (Match flame equivalent)

MERIT (available in 43 colours)



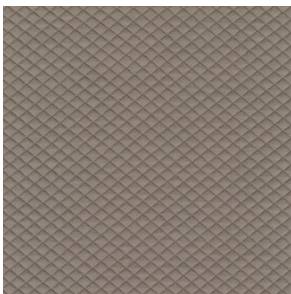
COMPOSITION

24% PES, 76%

ABRASION

85000 martindale
lightfastness 7
pilling 4

MOSAIC 2 (available in 15 colours)



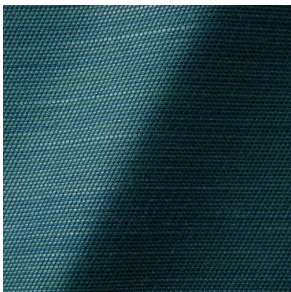
COMPOSITION

58% PES, 27% WV, 9% PA,
6% EA

ABRASION

100000 martindale
lightfastness 6 - 7
pilling 4 - 5

ORAY RAY (available in 15 colours)



COMPOSITION

39% LI, 38% CV, 15% PE,
8% CO

ABRASION

30000 martindale
pilling 4 - 5

FIRE RESISTANCE

BS 5852 - Ignition source
0 (Cigarette)
BS 5852 - Ignition source
1 (Match flame equivalent)
TB 117-2013

ORAY RONAN (available in 5 colours)



COMPOSITION

39% LI, 38% CV, 15% PE,
8% CO

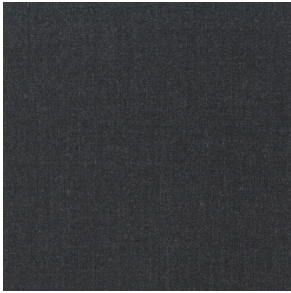
ABRASION

30000 martindale
pilling 4 - 5

FIRE RESISTANCE

BS 5852 - Ignition source
0 (Cigarette)
BS 5852 - Ignition source
1 (Match flame equivalent)
TB 117-2013

REMIX 3 (available in 53 colours)



COMPOSITION

10% PA, 90% WV

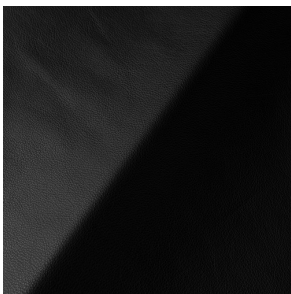
ABRASION

100000 martindale
lightfastness 5
pilling 4

FIRE RESISTANCE

BS5852 part 1
US. Cal. Bull. 117-2013

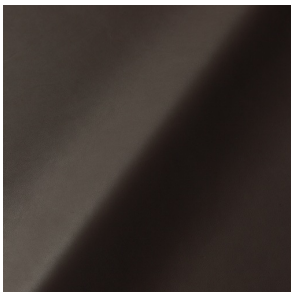
SAVANNE (available in 3 colours)



FIRE RESISTANCE

EN 1021-1 (Cigarette)
EN 1021-2 (Match)
TB 117-2013
OEKO-TEX

SHADE (available in 6 colours)



ABRASION

lightfastness 3 - 4

FIRE RESISTANCE

EN 1021-1 (Cigarette)
EN 1021-2 (Match)
TB 117-2013

SOLIS (available in 9 colours)



COMPOSITION

60% WO, 30% PES, 2%
PA, 3% PC

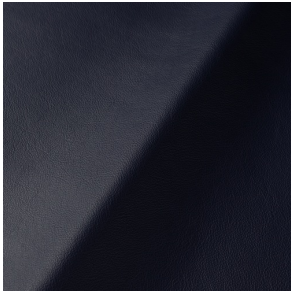
ABRASION

40000 martindale
lightfastness 5
pilling 3 - 4

FIRE RESISTANCE

EN 1021-1 (Cigarette)
EN 1021-2 (Match)
TB 117-2013

SPECTRUM (available in 11 colours)



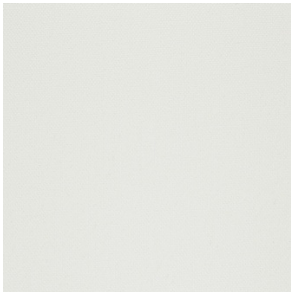
ABRASION

lightfastness 6 - 6

FIRE RESISTANCE

EN 1021-1 (Cigarette)
EN 1021-2 (Match)
TB 117-2013
OEKO-TEX

STEELCUT 2 (available in 37 colours)



COMPOSITION

90% WV, 10% PA

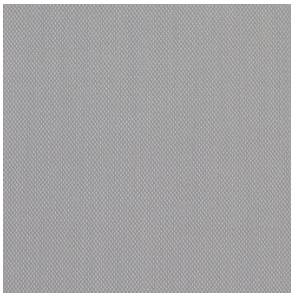
ABRASION

100000 martindale
lightfastness 6
pilling 3 - 4

FIRE RESISTANCE

BS 5852 - Ignition source
0 (Cigarette)
BS 5852 - Ignition source
1 (Match flame equivalent)
EN 1021-1 (Cigarette)
EN 1021-2 (Match)
TB 117-2013
EU Ecolabel

STEELCUT TRIO 3 (available in 54 colours)



COMPOSITION

90% WV, 10% PA

ABRASION

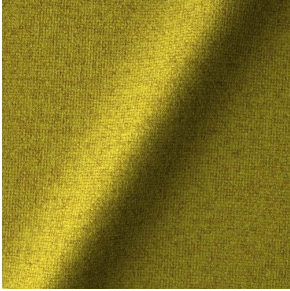
100000 martindale
lightfastness 5
pilling 4

FIRE RESISTANCE

BS 5852 - Ignition source
0 (Cigarette)
BS 5852 - Ignition source
1 (Match flame equivalent)
EN 1021-1 (Cigarette)
EN 1021-2 (Match)
EU Ecolabel

TARTANIC (available in 0 colours)

TONICA 2 (available in 39 colours)

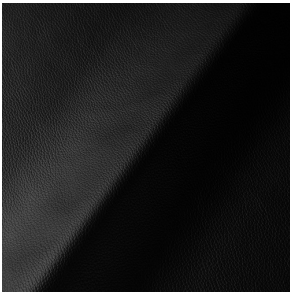


COMPOSITION
100% WV

ABRASION
45000 martindale
lightfastness 6 - 7
pilling 4 - 5

FIRE RESISTANCE
EN 1021-1 (Cigarette)
EN 1021-2 (Match)

ULTRA (available in 6 colours)



ABRASION
lightfastness 6 - 7

FIRE RESISTANCE
EN 1021-1 (Cigarette)
EN 1021-2 (Match)
TB 117-2013
ANSI/BIFMA M7.1 (Total
Volatile Organic
Compounds)

VESPER (available in 8 colours)



COMPOSITION
10% CO, 40% LI, 10% PA,
10% PES, 30% CV

ABRASION
40000 martindale
lightfastness 5
pilling 4

FIRE RESISTANCE
EN 1021-1 (Cigarette)
EN 1021-2 (Match)
TB 117-2013
