



## 30v Pendant Rust GP2001-N

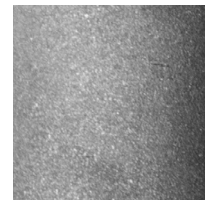
### Available colors





Rust



Rust/Zinc



Zinc

	North America	Europe
<b>Bulb</b>	Max 15W LED, GU10, 120V	Max 15W LED, GU10, 220V
<b>Color temperature</b>	2700K (recommended)	2700K (recommended)
<b>Lumen output</b>	Dependent on bulb	Dependent on bulb
<b>Cord</b>	Black, 6.5ft (16ft available)	Black fabric, 2m (5m available)
<b>Canopy</b>	Black powder coated, Ø 4.5, H 3/8 (in)	Rusted steel, Ø 10, H 2.5 (cm)
<b>Material</b>	Naturally rusted steel	Naturally rusted steel
<b>Size</b>	Ø 2.5, H 12 (in)	Ø 6, H 30 (cm)
<b>Weight</b>	3,3lbs	1,5kg
<b>Country of origin</b>	The Netherlands	The Netherlands
<b>Certification</b>		

Dry locations only. After the natural oxidation process, all items are treated to stop further rusting.

**Designed in Seattle,  
Washington, USA.**

Custom cords and canopies are available. Contact our offices for more information.