

Nest Sofa

MARCEL WANDERS STUDIO



The Nest collection's linear, clear metal structure lifts the plumpest and softest cushions from the floor. It is a comfy elevated nest for one or more people. For the lovers of fresh, colourful prints Marcel Wanders has developed two signature textiles with a heart of sunshine: 'One minute', with its instant splashes of blue skies, and 'Flower bits', with a bloom of flowers and butterflies. Since this chair and sofa are all about their cushions, they are also available other prints and colours so that everyone can accessorize their personal nest with the look that most represents them.

Detailing



Bring your comfortable Nest outside, and settle wherever you want. The Nest Sofa is available with a special outdoor pillow.

Nest Sofa / Frame

Dimensions

Product

Packaging

WIDTH 177cm | 69.7"

WIDTH 170cm | 66.9"

HEIGHT 81cm | 31.9"

HEIGHT 65cm | 25.6"

DEPTH 88cm | 34.6"

CUBAGE 0.88m³ | 31.22ft³

LENGTH 80cm | 31.5"

WEIGHT 25kg | 55.12lbs

Technical

ADDITIONAL

Nest Sofa consists of a Frame and a

MATERIAL

KTL and powdercoated steel frame (suitable for outdoor use), mixed foam, feather & fiber flock filling.

HEIGHT ARMREST

81cm | 31.9"

SEAT DEPTH

55cm | 21.7"

SEAT HEIGHT

48cm | 18.9"

SEAT WIDTH

122cm | 48"

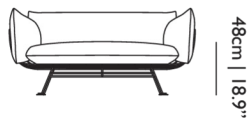
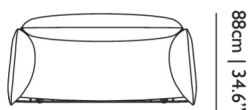
SEATING CAPACITY

2

Nest Sofa / Nest Sofa Cushions

Dimensions

177cm | 69.7"



Product

WIDTH 177cm | 69.7"

HEIGHT 81cm | 31.9"

DEPTH 88cm | 34.6"

Packaging

WIDTH 84cm | 33.1"

HEIGHT 72cm | 28.3"

CUBAGE 1.03m³ | 36.31ft³

LENGTH 170cm | 66.9"

WEIGHT 8kg | 17.64lbs

Technical

ADDITIONAL

Alfresco fabric (Cat II) is suitable for outdoor use, outdoor pillows are available on request and are subject to surcharges. Nest Chair pillows are connected by zippers. All covers can be removed for cleaning.

MATERIAL

Upholstered

HEIGHT ARMREST

81cm | 31.9"

SEAT DEPTH

55cm | 21.7"

SEAT HEIGHT

48cm | 18.9"

SEAT WIDTH

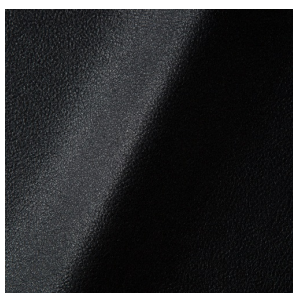
122cm | 48"

SEATING CAPACITY

2

Upholstery

ABBRACCI (available in 5 colours)

**COMPOSITION**

100% PES

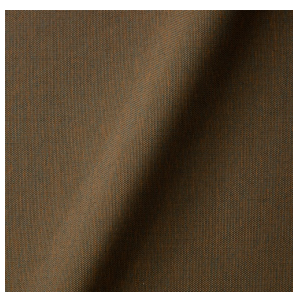
ABRASION

30000 martindale
lightfastness 3 - 4
pilling 5

FIRETEST

BS5852 part 1
US. Cal. Bull. 117-2013

ALFRESCO (available in 5 colours)

**COMPOSITION**

100% PES

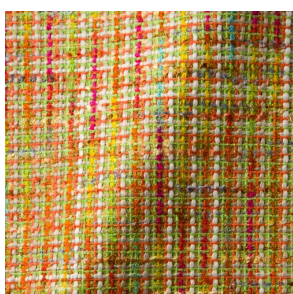
ABRASION

30000 martindale
lightfastness 3 - 4
pilling 5

FIRETEST

BS5852 part 1 on request
US. Cal. Bull. 117-2013

BOUCLE (available in 4 colours)

**COMPOSITION**

43% CO, 14% PA, 12% CV,
3% PES, 28% PAN

ABRASION

20000 martindale
lightfastness 4 - 6
pilling 4 - 5

FIRETEST

BS5852 part 1

CANVAS 2 (available in 45 colours)

**COMPOSITION**

90% WO, 10% PA

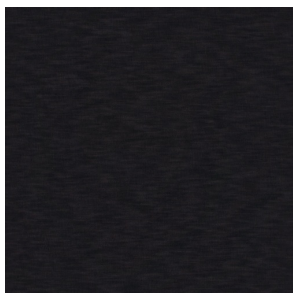
ABRASION

100000 martindale
lightfastness 6
pilling 4

FIRETEST

BS5852 part 1
US. Cal. Bull. 117-2013

DENIM (available in 3 colours)



COMPOSITION

100% CO

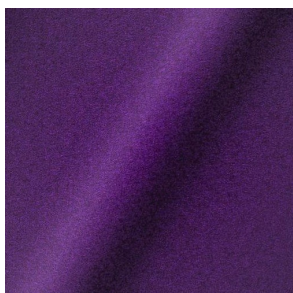
ABRASION

70000 martindale
lightfastness 4
pilling 3 - 4

FIRETEST

BS5852 part 1 on request
US. Cal. Bull. 117-2013

DIVINA 3 (available in 56 colours)



COMPOSITION

100% WO

ABRASION

45000 martindale
lightfastness 7
pilling 3

FIRETEST

BS5852 part 1
US. Cal. Bull. 117-2013

DIVINA MD (available in 27 colours)



COMPOSITION

100% WO

ABRASION

45000 martindale
lightfastness 6
pilling 3

FIRETEST

BS5852 part 1
US. Cal. Bull. 117-2013

DIVINA MELANGE 3 (available in 60 colours)



COMPOSITION

100% WO

ABRASION

45000 martindale
lightfastness 6 - 7
pilling 3

FIRETEST

BS5852 part 1
US. Cal. Bull. 117-2013

Bearded Leopard (available in 3 colours)



COMPOSITION

77% CV, 15% PES, 7% CO,
1% PA

ABRASION

15000 martindale
lightfastness 4 - 6
pilling 4

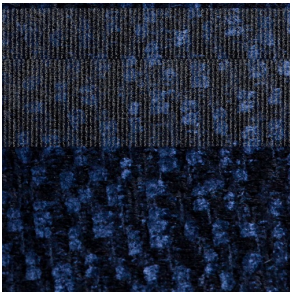
FIRETEST

BS5852 part 1 on request
US. Cal. Bull. 117-2013

Bison (available in 1 colours)



Calligraphy Bird (available in 4 colours)



COMPOSITION

64% CV, 21% PES, 15%
CO

ABRASION

50000 martindale
lightfastness 4 - 6
pilling 5

FIRETEST

BS5852 part 1 on request
US. Cal. Bull. 117-2013

Dodo Pavone (available in 3 colours)



COMPOSITION

12% CO, 88% PES

ABRASION

40000 martindale
lightfastness 5
pilling 4 - 5

FIRETEST

BS5852 part 1 on request
US. Cal. Bull. 117-2013

Menagerie of Extinct Animals (available in 2 colours)



COMPOSITION

100% PES

ABRASION

50000 martindale
lightfastness 4 - 6
pilling 5

FIRETEST

BS5852 part 1 on request
US. Cal. Bull. 117-2013

Rendezvous Tokyo Blue (available in 1 colours)



COMPOSITION

100% PES

ABRASION

50000 martindale
lightfastness 4 - 6
pilling 5

FIRETEST

BS5852 part 1 on request
US. Cal. Bull. 117-2013

Blushing Sloth Melange Mohair (available in 1 colours)



COMPOSITION

85% WV, 15% WM

ABRASION

15000 martindale
lightfastness 4 - 6
pilling 2 - 3

FIRETEST

BS5852 part 1 on request
US. Cal. Bull. 117-2013

Blushing Sloth Woolly Mohair (available in 1 colours)



COMPOSITION

24% PES, 15% PA, 8% CO,
24% WM, 29% WV

ABRASION

40000 martindale
lightfastness 4 - 6
pilling 3 - 4

FIRETEST

BS5852 part 1 on request
US. Cal. Bull. 117-2013

FIORD (available in 27 colours)



COMPOSITION

92% WV, 8% PA

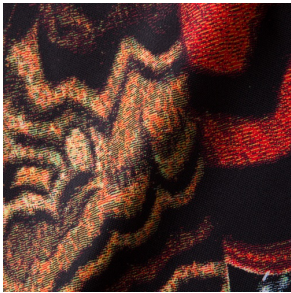
ABRASION

60000 martindale
lightfastness 6
pilling 4 - 5

FIRETEST

BS5852 part 1 on request
US. Cal. Bull. 117-2013

FLOWER BITS (available in 2 colours)



COMPOSITION

100% PES

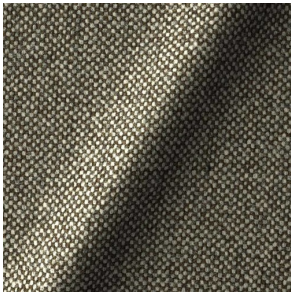
ABRASION

50000 martindale
pilling 4

FIRETEST

BS5852 part 1 on request
US. Cal. Bull. 117-2013

HALLINGDAL 65 (available in 58 colours)



COMPOSITION

30% CV, 70% WV

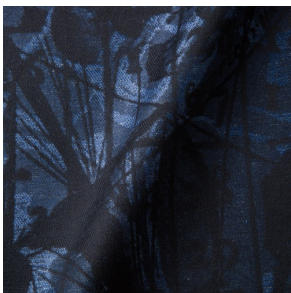
ABRASION

100000 martindale
lightfastness 7
pilling 3 - 4

FIRETEST

BS5852 part 1

JACQUARD, ANDAZ (available in 1 colours)



COMPOSITION

34% CO, 30% CV, 24%
LI, 12% PA

ABRASION

25000 martindale
lightfastness 4 - 6
pilling 4 - 5

FIRETEST

BS5852 part 1 on request
US. Cal. Bull. 117-2013

JACQUARD, FRESC (available in 1 colours)



COMPOSITION

52% CV, 38% CO, 10% LI

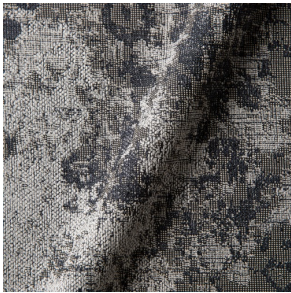
ABRASION

15000 martindale
lightfastness 3 - 4
pilling 2 - 3

FIRETEST

BS5852 part 1 on request
US. Cal. Bull. 117-2013

JACQUARD, OLD (available in 2 colours)



COMPOSITION

52% CV, 38% CO, 10% LI

ABRASION

15000 martindale
lightfastness 3 - 4
pilling 2 - 3

FIRETEST

BS5852 part 1 on request
US. Cal. Bull. 117-2013

JUSTO (available in 10 colours)



COMPOSITION

15% CO, 35% PC, 10% PA,
40% CV

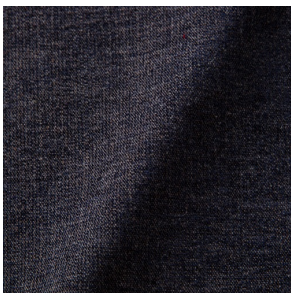
ABRASION

50000 martindale
lightfastness 5
pilling 4

FIRETEST

BS5852 part 1 on request
US. Cal. Bull. 117-2013

LISCIO (available in 11 colours)



COMPOSITION

35% WO, 35% CV, 21%
CO, 9% PA

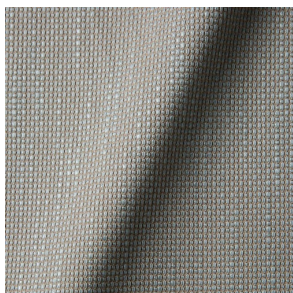
ABRASION

30000 martindale
lightfastness 4 - 6
pilling 4

FIRETEST

BS5852 part 1 on request
US. Cal. Bull. 117-2013

MACCHEDIL GREZZO (available in 10 colours)



COMPOSITION

47% CO, 20% CV, 18%
PA, 8% LI, 5% PC

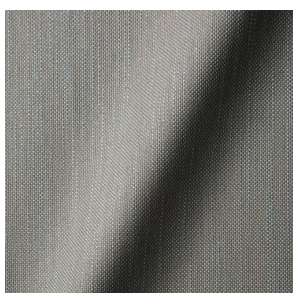
ABRASION

15000 martindale
lightfastness 3 - 5
pilling 4 - 5

FIRETEST

BS5852 part 1 on request

MACCHEDIL SOTTILE (available in 10 colours)



COMPOSITION

49% CV, 24% PES, 21% LI,
6% CO

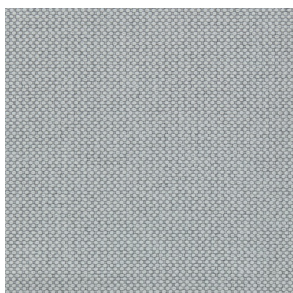
ABRASION

20000 martindale
lightfastness 3 - 5
pilling 2 - 3

FIRETEST

BS5852 part 1 on request

MERIT (available in 43 colours)



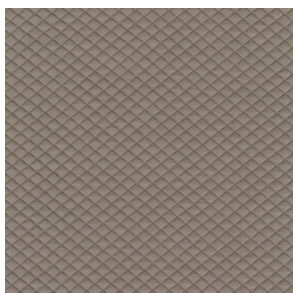
COMPOSITION

24% PES, 76%

ABRASION

85000 martindale
lightfastness 7
pilling 4

MOSAIC 2 (available in 15 colours)



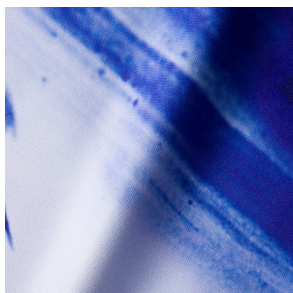
COMPOSITION

58% PES, 27% WV, 9% PA,
6% EA

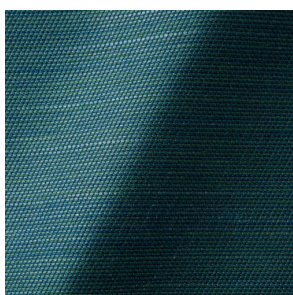
ABRASION

100000 martindale
lightfastness 6 - 7
pilling 4 - 5

ONE MINUTE (available in 0 colours)



ORAY RAY (available in 15 colours)



COMPOSITION

39% LI, 38% CV, 15% PE,
8% CO

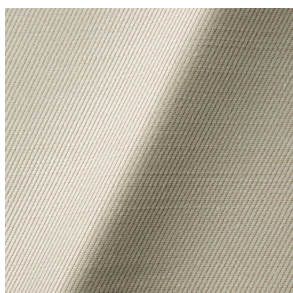
ABRASION

30000 martindale
pilling 4 - 5

FIRETEST

BS5852 part 1 on request
US. Cal. Bull. 117-2013

ORAY RONAN (available in 5 colours)



COMPOSITION

39% LI, 38% CV, 15% PE,
8% CO

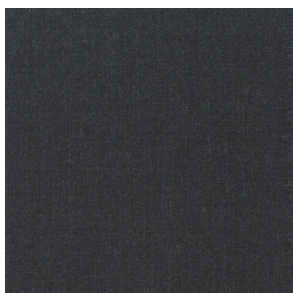
ABRASION

30000 martindale
pilling 4 - 5

FIRETEST

BS5852 part 1 on request
US. Cal. Bull. 117-2013

REMIX 3 (available in 53 colours)



COMPOSITION

10% PA, 90% WV

ABRASION

100000 martindale
lightfastness 5
pilling 4

FIRETEST

BS5852 part 1
US. Cal. Bull. 117-2013

SOFTLINEN (available in 2 colours)



COMPOSITION

100% LI

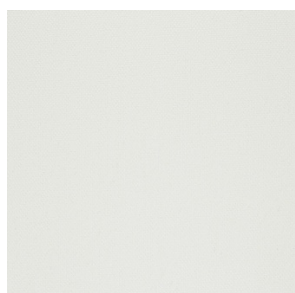
ABRASION

25000 martindale
lightfastness 4 - 6
pilling 3 - 4

FIRETEST

BS5852 part 1
US. Cal. Bull. 117-2013

STEELCUT 2 (available in 37 colours)



COMPOSITION

90% WV, 10% PA

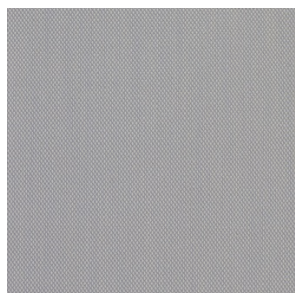
ABRASION

100000 martindale
lightfastness 6
pilling 3 - 4

FIRETEST

US. Cal. Bull. 117-2013

STEELCUT TRIO 3 (available in 54 colours)



COMPOSITION

90% WV, 10% PA

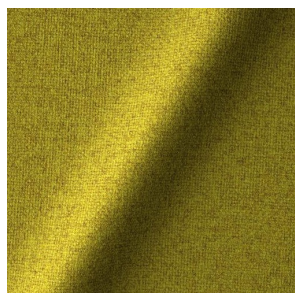
ABRASION

100000 martindale
lightfastness 5
pilling 4

FIRETEST

US. Cal. Bull. 117-2013

TONICA 2 (available in 39 colours)



COMPOSITION

100% WV

ABRASION

45000 martindale
lightfastness 6 - 7
pilling 4 - 5

FIRETEST

US. Cal. Bull. 117-2013

VESPER (available in 8 colours)



COMPOSITION

10% CO, 40% LI, 10% PA,
10% PES, 30% CV

ABRASION

40000 martindale
lightfastness 5
pilling 4

FIRETEST

BS5852 part 1 on request
US. Cal. Bull. 117-2013
