

m o o o i

Cocktail Chair

MARCEL WANDERS STUDIO



Mix the lightness of your favourite cocktail with the weight of Dutch historical heritage, while comfortably lounging in Marcel Wanders' Cocktail chair. Its straightforward design is luxuriously enveloped in a stylish signature woven textile, Heritage for cocktail. Waiting for your appointment at the bar, sitting on the Cocktail chair, is pure pleasure. Relax and enjoy your drink while taking in the vibe around you. Beware: if your date is running late you might not even notice...

Detailing



This elegant armchair, with just the right proportions, can be personalised thanks to the wide choice of the Moooi fabric collection.

Cocktail Chair / Chair

Dimensions

74cm | 29.1"



73cm | 28.7"



38cm | 15"



69cm | 27.2"

Product

WIDTH 74cm | 29.1"

HEIGHT 69cm | 27.2"

DEPTH 73cm | 28.7"

Packaging

WIDTH 65cm | 25.6"

HEIGHT 82cm | 32.3"

CUBAGE 0.32m³ | 11.29ft³

LENGTH 60cm | 23.6"

WEIGHT 15kg | 33.07lbs

Technical

ADDITIONAL

Legs available in two stain colours: Cinnamon Stained, White Wash Stained

MATERIAL

Moulded foam on steel frame with wooden legs.

SEAT DEPTH

51cm | 20.1"

SEAT HEIGHT

37cm | 14.6"

SEAT WIDTH 2

70cm | 27.6"

SEAT DEPTH 2

46cm | 18.1"

SEAT WIDTH

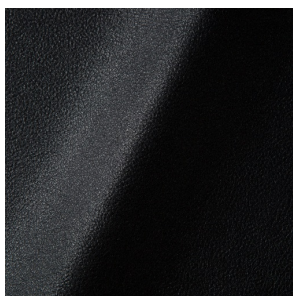
73cm | 28.7"

SEATING CAPACITY

1

Upholstery

ABBRACCI (available in 5 colours)



COMPOSITION

100% PES

ABRASION

30000 martindale
lightfastness 3 - 4
pilling 5

FIRETEST

BS5852 part 1
US. Cal. Bull. 117-2013

BOUCLE (available in 4 colours)



COMPOSITION

43% CO, 14% PA, 12% CV,
3% PES, 28% PAN

ABRASION

20000 martindale
lightfastness 4 - 6
pilling 4 - 5

FIRETEST

BS5852 part 1

CANVAS 2 (available in 45 colours)



COMPOSITION

90% WO, 10% PA

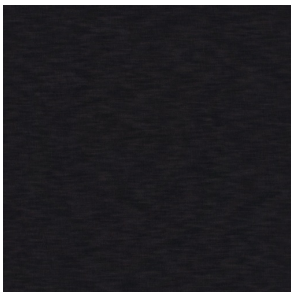
ABRASION

100000 martindale
lightfastness 6
pilling 4

FIRETEST

BS5852 part 1
US. Cal. Bull. 117-2013

DENIM (available in 3 colours)



COMPOSITION

100% CO

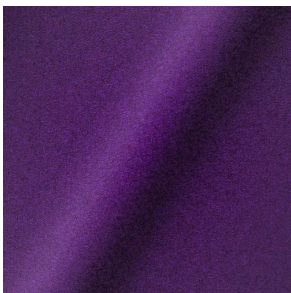
ABRASION

70000 martindale
lightfastness 4
pilling 3 - 4

FIRETEST

BS5852 part 1 on request
US. Cal. Bull. 117-2013

DIVINA 3 (available in 56 colours)



COMPOSITION

100% WO

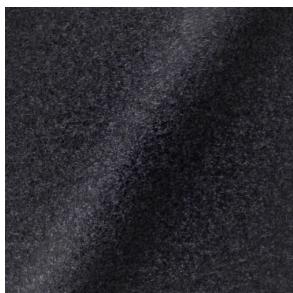
ABRASION

45000 martindale
lightfastness 7
pilling 3

FIRETEST

BS5852 part 1
US. Cal. Bull. 117-2013

DIVINA MD (available in 27 colours)



COMPOSITION

100% WO

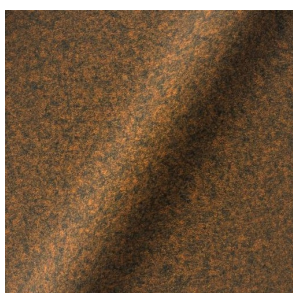
ABRASION

45000 martindale
lightfastness 6
pilling 3

FIRETEST

BS5852 part 1
US. Cal. Bull. 117-2013

DIVINA MELANGE 3 (available in 60 colours)



COMPOSITION

100% WO

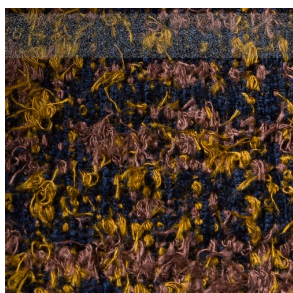
ABRASION

45000 martindale
lightfastness 6 - 7
pilling 3

FIRETEST

BS5852 part 1
US. Cal. Bull. 117-2013

Bearded Leopard (available in 3 colours)



COMPOSITION

77% CV, 15% PES, 7% CO,
1% PA

ABRASION

15000 martindale
lightfastness 4 - 6
pilling 4

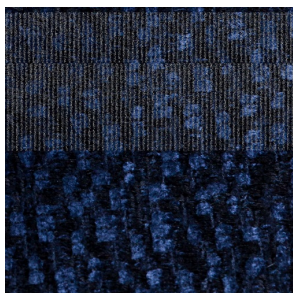
FIRETEST

BS5852 part 1 on request
US. Cal. Bull. 117-2013

Armoured Boar, Crackle (available in 1 colours)



Calligraphy Bird (available in 4 colours)



COMPOSITION

64% CV, 21% PES, 15%
CO

ABRASION

50000 martindale
lightfastness 4 - 6
pilling 5

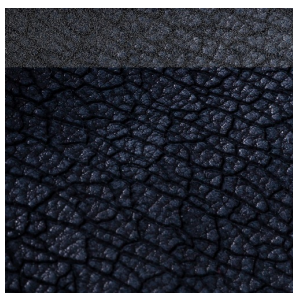
FIRETEST

BS5852 part 1 on request
US. Cal. Bull. 117-2013

Dwarf Rhino Buffed (available in 1 colours)



Dwarf Rhino, Crackle (available in 1 colours)



Menagerie of Extinct Animals (available in 2 colours)



COMPOSITION

100% PES

ABRASION

50000 martindale
lightfastness 4 - 6
pilling 5

FIRETEST

BS5852 part 1 on request
US. Cal. Bull. 117-2013

Rendezvous Tokyo Blue (available in 1 colours)



COMPOSITION

100% PES

ABRASION

50000 martindale
lightfastness 4 - 6
pilling 5

FIRETEST

BS5852 part 1 on request
US. Cal. Bull. 117-2013

Blushing Sloth Melange Mohair (available in 1 colours)



COMPOSITION

85% WV, 15% WM

ABRASION

15000 martindale
lightfastness 4 - 6
pilling 2 - 3

FIRETEST

BS5852 part 1 on request
US. Cal. Bull. 117-2013

FIORD (available in 27 colours)



COMPOSITION

92% WV, 8% PA

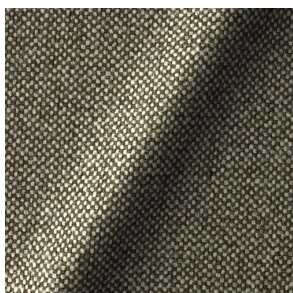
ABRASION

60000 martindale
lightfastness 6
pilling 4 - 5

FIRETEST

BS5852 part 1 on request
US. Cal. Bull. 117-2013

HALLINGDAL 65 (available in 58 colours)



COMPOSITION

30% CV, 70% WV

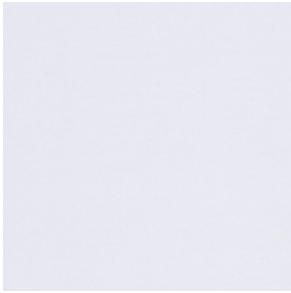
ABRASION

100000 martindale
lightfastness 7
pilling 3 - 4

FIRETEST

BS5852 part 1

HARALD 3 (available in 30 colours)



COMPOSITION
100% CO

ABRASION
100000 martindale
lightfastness 5
pilling 4 - 5

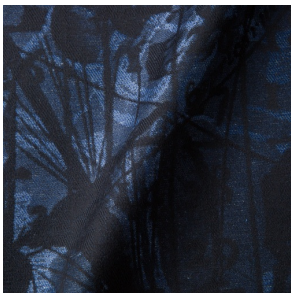
HERITAGE (available in 1 colours)

COMPOSITION
100% PES

ABRASION
50000 martindale
pilling 4

FIRETEST
BS5852 part 1 on request
US. Cal. Bull. 117-2013

JACQUARD, ANDAZ (available in 1 colours)

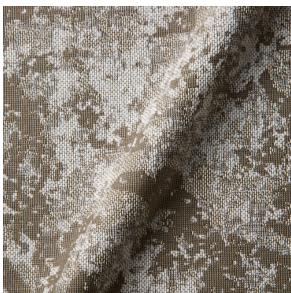


COMPOSITION
34% CO, 30% CV, 24%
LI, 12% PA

ABRASION
25000 martindale
lightfastness 4 - 6
pilling 4 - 5

FIRETEST
BS5852 part 1 on request
US. Cal. Bull. 117-2013

JACQUARD, FRESC (available in 1 colours)

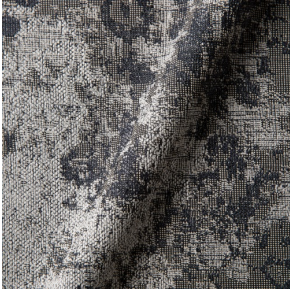


COMPOSITION
52% CV, 38% CO, 10% LI

ABRASION
15000 martindale
lightfastness 3 - 4
pilling 2 - 3

FIRETEST
BS5852 part 1 on request
US. Cal. Bull. 117-2013

JACQUARD, OLD (available in 2 colours)



COMPOSITION

52% CV, 38% CO, 10% LI

ABRASION

15000 martindale
lightfastness 3 - 4
pilling 2 - 3

FIRETEST

BS5852 part 1 on request
US. Cal. Bull. 117-2013

JUSTO (available in 10 colours)



COMPOSITION

15% CO, 35% PC, 10% PA,
40% CV

ABRASION

50000 martindale
lightfastness 5
pilling 4

FIRETEST

BS5852 part 1 on request
US. Cal. Bull. 117-2013

LISCIO (available in 11 colours)



COMPOSITION

35% WO, 35% CV, 21%
CO, 9% PA

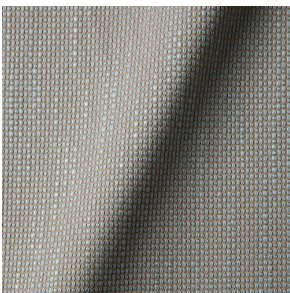
ABRASION

30000 martindale
lightfastness 4 - 6
pilling 4

FIRETEST

BS5852 part 1 on request
US. Cal. Bull. 117-2013

MACCHEDIL GREZZO (available in 10 colours)



COMPOSITION

47% CO, 20% CV, 18%
PA, 8% LI, 5% PC

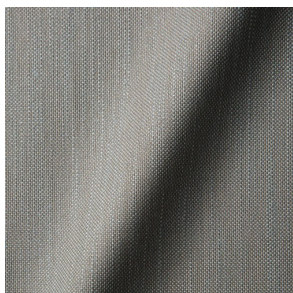
ABRASION

15000 martindale
lightfastness 3 - 5
pilling 4 - 5

FIRETEST

BS5852 part 1 on request

MACCHEDIL SOTTILE (available in 10 colours)



COMPOSITION

49% CV, 24% PES, 21% LI,
6% CO

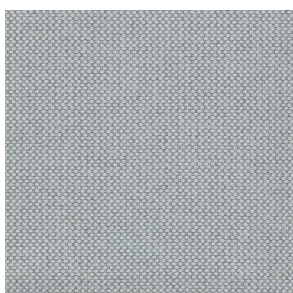
ABRASION

20000 martindale
lightfastness 3 - 5
pilling 2 - 3

FIRETEST

BS5852 part 1 on request

MERIT (available in 43 colours)



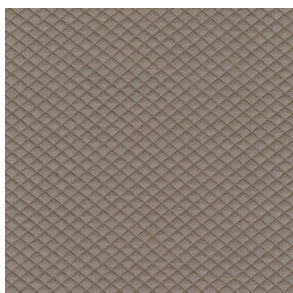
COMPOSITION

24% PES, 76%

ABRASION

85000 martindale
lightfastness 7
pilling 4

MOSAIC 2 (available in 15 colours)



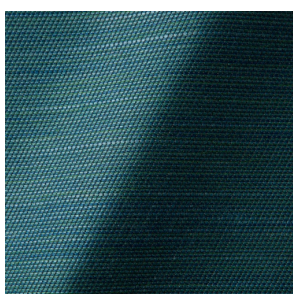
COMPOSITION

58% PES, 27% WV, 9% PA,
6% EA

ABRASION

100000 martindale
lightfastness 6 - 7
pilling 4 - 5

ORAY RAY (available in 15 colours)



COMPOSITION

39% LI, 38% CV, 15% PE,
8% CO

ABRASION

30000 martindale
pilling 4 - 5

FIRETEST

BS5852 part 1 on request
US. Cal. Bull. 117-2013

ORAY RONAN (available in 5 colours)



COMPOSITION

39% LI, 38% CV, 15% PE,
8% CO

ABRASION

30000 martindale
pilling 4 - 5

FIRETEST

BS5852 part 1 on request
US. Cal. Bull. 117-2013

REMIX 3 (available in 53 colours)



COMPOSITION

10% PA, 90% WV

ABRASION

100000 martindale
lightfastness 5
pilling 4

FIRETEST

BS5852 part 1
US. Cal. Bull. 117-2013

SOLIS (available in 9 colours)



COMPOSITION

60% WO, 30% PES, 2%
PA, 3% PC

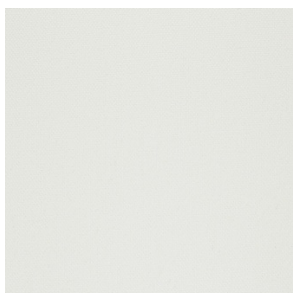
ABRASION

40000 martindale
lightfastness 5
pilling 3 - 4

FIRETEST

BS5852 part 1 on request
US. Cal. Bull. 117-2013

STEELCUT 2 (available in 37 colours)



COMPOSITION

90% WV, 10% PA

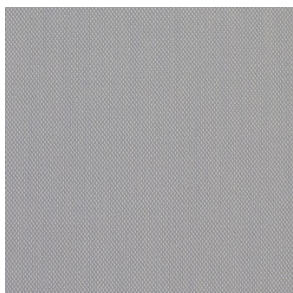
ABRASION

100000 martindale
lightfastness 6
pilling 3 - 4

FIRETEST

US. Cal. Bull. 117-2013

STEELCUT TRIO 3 (available in 54 colours)



COMPOSITION

90% WV, 10% PA

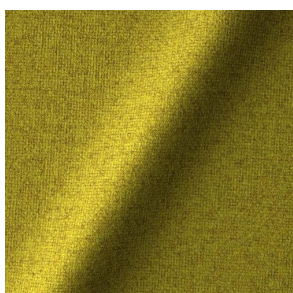
ABRASION

100000 martindale
lightfastness 5
pilling 4

FIRETEST

US. Cal. Bull. 117-2013

TONICA 2 (available in 39 colours)



COMPOSITION

100% WV

ABRASION

45000 martindale
lightfastness 6 - 7
pilling 4 - 5

FIRETEST

US. Cal. Bull. 117-2013

VESPER (available in 8 colours)



COMPOSITION

10% CO, 40% LI, 10% PA,
10% PES, 30% CV

ABRASION

40000 martindale
lightfastness 5
pilling 4

FIRETEST

BS5852 part 1 on request
US. Cal. Bull. 117-2013
