

m o o o i

## Bart Armchair

MOOOI WORKS



The Bart Armchair brings a friendly sort of grandeur to your home. This single-seater does the rounded shapes of the Bart family even more justice, especially with the optional swivel foot that makes a circular motion. Having a conversation or to inspired to sit still? Swivel your Bart Armchair around and enjoy another point of view! If you prefer a more solid setup, the Bart Armchair is available with slanted wooden legs (canape) and without.

---

### *Detailing*



The Bart Armchair is originally inspired by the rounded shapes and sumptuous glory of 18th century Rococo.

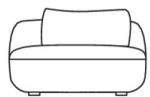
## Bart Armchair / Basic

### Dimensions

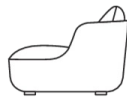
95cm | 37.4"



95cm | 37.4"



42cm | 16.5"



60cm | 23.6"

### Product

**WIDTH** 95cm | 37.4"

**HEIGHT** 60cm | 23.6"

**DEPTH** 95cm | 37.4"

### Packaging

**WIDTH** 102cm | 40.2"

**HEIGHT** 63cm | 24.8"

**CUBAGE** 0.67m<sup>3</sup> | 23.6ft<sup>3</sup>

**LENGTH** 104cm | 40.9"

**WEIGHT** 39kg | 85.98lbs

### Technical

#### MATERIAL

Wooden frame covered in foam and dacron, foam seat.

#### HEIGHT ARMREST

60cm | 23.6"

#### SEAT DEPTH

69cm | 27.2"

#### SEAT HEIGHT

42cm | 16.5"

#### SEAT WIDTH

82cm | 32.3"

## Bart Armchair / Canape

### Dimensions

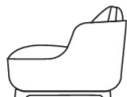
95cm | 37.4"



95cm | 37.4"



47cm | 18.5"



65cm | 25.6"

### Product

**WIDTH** 95cm | 37.4"

**HEIGHT** 65cm | 25.6"

**DEPTH** 95cm | 37.4"

### Packaging

**WIDTH** 102cm | 40.2"

**HEIGHT** 63cm | 24.8"

**CUBAGE** 0.67m<sup>3</sup> | 23.6ft<sup>3</sup>

**LENGTH** 104cm | 40.9"

**WEIGHT** 39kg | 85.98lbs

### Technical

**MATERIAL**

Wooden frame covered in foam and dacron, foam seat.

**HEIGHT ARMREST**

65cm | 25.6"

**SEAT DEPTH**

74cm | 29.1"

**SEAT HEIGHT**

47cm | 18.5"

**SEAT WIDTH**

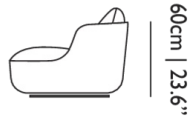
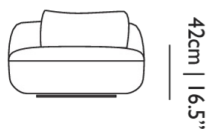
82cm | 32.3"

---

## *Bart Armchair / Swivel*

### *Dimensions*

95cm | 37.4"



### *Product*

**WIDTH** 95cm | 37.4"

**HEIGHT** 60cm | 23.6"

**DEPTH** 95cm | 37.4"

### *Packaging*

**WIDTH** 102cm | 40.2"

**HEIGHT** 63cm | 24.8"

**CUBAGE** 0.67m<sup>3</sup> | 23.6ft<sup>3</sup>

**LENGTH** 104cm | 40.9"

**WEIGHT** 39kg | 85.98lbs

---

### *Technical*

**MATERIAL**

Wooden frame covered in foam and dacron, foam seat.

**HEIGHT ARMREST**

60cm | 23.6"

**SEAT DEPTH**

69cm | 27.2"

**SEAT HEIGHT**

42cm | 16.5"

**SEAT WIDTH**

82cm | 32.3"

---

## *Upholstery*

*CANVAS 2 (available in 45 colours)*



**COMPOSITION**

90% WO, 10% PA

**ABRASION**

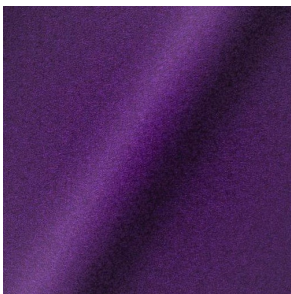
100000 martindale  
lightfastness 6  
pilling 4

**FIRE RESISTANCE**

BS 5852 - Ignition source  
1 (Match flame equivalent)  
BS 5852 - Ignition source  
0 (Cigarette)  
TB 117-2013  
EU Ecolabel

---

*DIVINA 3 (available in 56 colours)*



**COMPOSITION**

100% WO

**ABRASION**

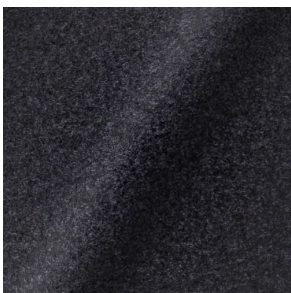
45000 martindale  
lightfastness 7  
pilling 3

**FIRE RESISTANCE**

BS 5852 - Ignition source  
0 (Cigarette)  
BS 5852 - Ignition source  
5 (Crib 5)  
BS 5852 - Ignition source  
1 (Match flame equivalent)  
EN 1021-1 (Cigarette)  
EN 1021-2 (Match)  
TB 117-2013  
EU Ecolabel

---

*DIVINA MD (available in 27 colours)*



**COMPOSITION**

100% WO

**ABRASION**

45000 martindale  
lightfastness 6  
pilling 3

**FIRE RESISTANCE**

BS 5852 - Ignition source  
0 (Cigarette)  
BS 5852 - Ignition source  
5 (Crib 5)  
BS 5852 - Ignition source  
1 (Match flame equivalent)  
EN 1021-1 (Cigarette)  
EN 1021-2 (Match)  
EU Ecolabel

---

*DIVINA MELANGE 3* (available in 60 colours)



**COMPOSITION**

100% WO

**ABRASION**

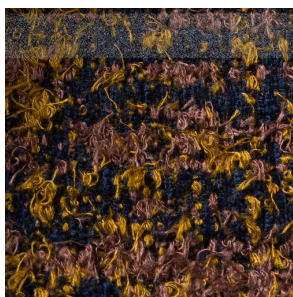
45000 martindale  
lightfastness 6 - 7  
pilling 3

**FIRE RESISTANCE**

BS 5852 - Ignition source  
0 (Cigarette)  
BS 5852 - Ignition source  
5 (Crib 5)  
BS 5852 - Ignition source  
1 (Match flame equivalent)  
EN 1021-1 (Cigarette)  
EN 1021-2 (Match)  
TB 117-2013  
EU Ecolabel

---

*Bearded Leopard* (available in 3 colours)



**COMPOSITION**

77% CV, 15% PES, 7% CO,  
1% PA

**ABRASION**

15000 martindale  
lightfastness 4 - 6  
pilling 4

**FIRE RESISTANCE**

BS5852 part 1 on request  
US. Cal. Bull. 117-2013

---

*Bison* (available in 1 colours)



---

*Dodo Pavone* (available in 3 colours)



**COMPOSITION**

12% CO, 88% PES

**ABRASION**

40000 martindale  
lightfastness 5  
pilling 4 - 5

**FIRE RESISTANCE**

BS5852 part 1 on request  
US. Cal. Bull. 117-2013

---

*Blushing Sloth Melange Mohair (available in 1 colours)*



**COMPOSITION**

85% WV, 15% WM

**ABRASION**

15000 martindale  
lightfastness 4 - 6  
pilling 2 - 3

**FIRE RESISTANCE**

BS5852 part 1 on request  
US. Cal. Bull. 117-2013

---

*Blushing Sloth Woolly Mohair (available in 1 colours)*



**COMPOSITION**

24% PES, 15% PA, 8% CO,  
24% WM, 29% WV

**ABRASION**

40000 martindale  
lightfastness 4 - 6  
pilling 3 - 4

**FIRE RESISTANCE**

BS5852 part 1 on request  
US. Cal. Bull. 117-2013

---

*FIORD (available in 27 colours)*



**COMPOSITION**

92% WV, 8% PA

**ABRASION**

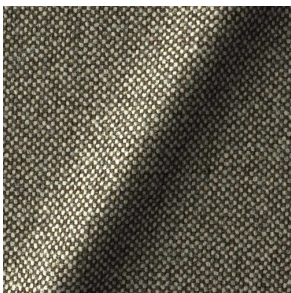
60000 martindale  
lightfastness 6  
pilling 4 - 5

**FIRE RESISTANCE**

EN 1021-1 (Cigarette)  
EN 1021-2 (Match)  
BS 5852 - Ignition source  
0 (Cigarette)  
BS 5852 - Ignition source  
1 (Match flame equivalent)

---

*HALLINGDAL 65 (available in 58 colours)*



**COMPOSITION**

30% CV, 70% WV

**ABRASION**

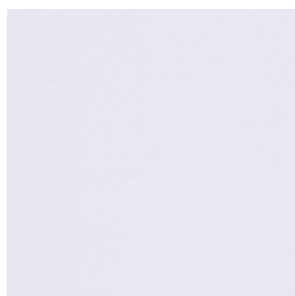
100000 martindale  
lightfastness 7  
pilling 3 - 4

**FIRE RESISTANCE**

BS 5852 - Ignition source  
0 (Cigarette)  
BS 5852 - Ignition source  
5 (Crib 5)  
BS 5852 - Ignition source  
1 (Match flame equivalent)  
EN 1021-1 (Cigarette)  
EN 1021-2 (Match)  
TB 117-2013  
EU Ecolabel

---

*HARALD 3 (available in 30 colours)*



**COMPOSITION**

100% CO

**ABRASION**

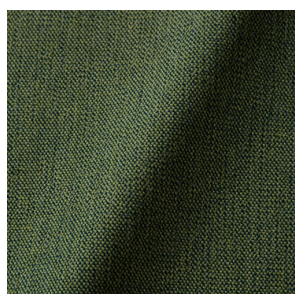
100000 martindale  
lightfastness 5  
pilling 4 - 5

**FIRE RESISTANCE**

EN 1021-1 (Cigarette)

---

*JUSTO (available in 10 colours)*



**COMPOSITION**

15% CO, 35% PC, 10% PA,  
40% CV

**ABRASION**

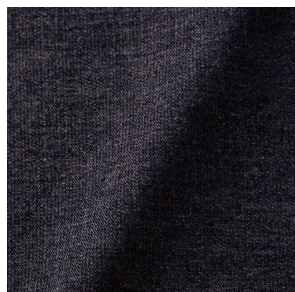
50000 martindale  
lightfastness 5  
pilling 4

**FIRE RESISTANCE**

EN 1021-1 (Cigarette)  
EN 1021-2 (Match)  
TB 117-2013

---

*LISCIO (available in 11 colours)*



**COMPOSITION**

35% WO, 35% CV, 21%  
CO, 9% PA

**ABRASION**

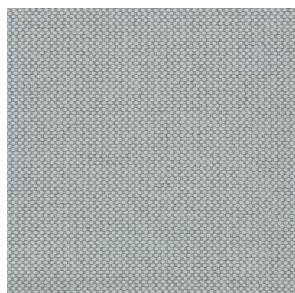
30000 martindale  
lightfastness 4 - 6  
pilling 4

**FIRE RESISTANCE**

TB 117-2013

---

*MERIT (available in 43 colours)*



**COMPOSITION**

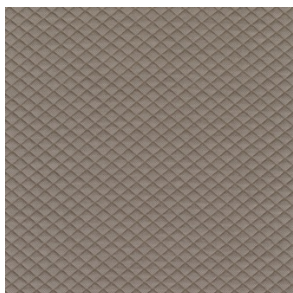
24% PES, 76%

**ABRASION**

85000 martindale  
lightfastness 7  
pilling 4

---

*MOSAIC 2 (available in 15 colours)*



**COMPOSITION**

58% PES, 27% WV, 9% PA,  
6% EA

**ABRASION**

100000 martindale  
lightfastness 6 - 7  
pilling 4 - 5

---

*REMIX 3 (available in 53 colours)*



**COMPOSITION**

10% PA, 90% WV

**ABRASION**

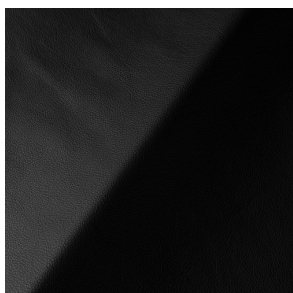
100000 martindale  
lightfastness 5  
pilling 4

**FIRE RESISTANCE**

BS5852 part 1  
US. Cal. Bull. 117-2013

---

*SAVANNE (available in 3 colours)*

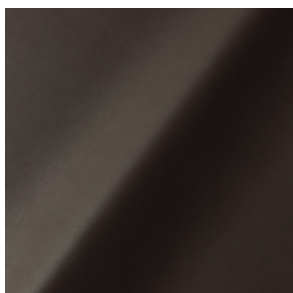


**FIRE RESISTANCE**

EN 1021-1 (Cigarette)  
EN 1021-2 (Match)  
TB 117-2013  
OEKO-TEX

---

*SHADE (available in 6 colours)*



**ABRASION**

lightfastness 3 - 4

**FIRE RESISTANCE**

EN 1021-1 (Cigarette)  
EN 1021-2 (Match)  
TB 117-2013



*SOLIS (available in 9 colours)*



**COMPOSITION**

60% WO, 30% PES, 2%  
PA, 3% PC

**ABRASION**

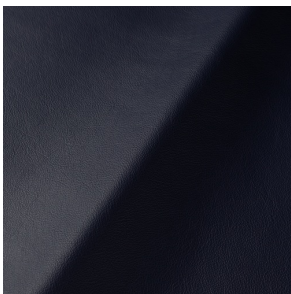
40000 martindale  
lightfastness 5  
pilling 3 - 4

**FIRE RESISTANCE**

EN 1021-1 (Cigarette)  
EN 1021-2 (Match)  
TB 117-2013

---

*SPECTRUM (available in 11 colours)*



**ABRASION**

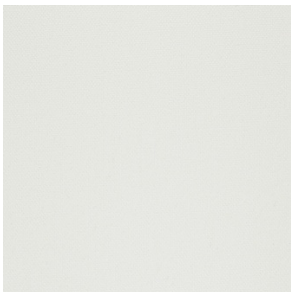
lightfastness 6 - 6

**FIRE RESISTANCE**

EN 1021-1 (Cigarette)  
EN 1021-2 (Match)  
TB 117-2013  
OEKO-TEX

---

*STEELCUT 2 (available in 37 colours)*



**COMPOSITION**

90% WV, 10% PA

**ABRASION**

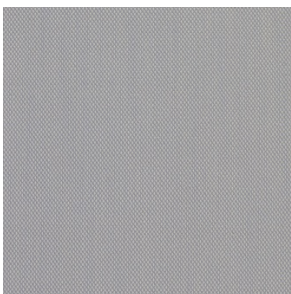
100000 martindale  
lightfastness 6  
pilling 3 - 4

**FIRE RESISTANCE**

BS 5852 - Ignition source  
0 (Cigarette)  
BS 5852 - Ignition source  
1 (Match flame equivalent)  
EN 1021-1 (Cigarette)  
EN 1021-2 (Match)  
TB 117-2013  
EU Ecolabel

---

*STEELCUT TRIO 3 (available in 54 colours)*



**COMPOSITION**

90% WV, 10% PA

**ABRASION**

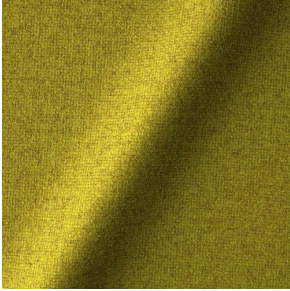
100000 martindale  
lightfastness 5  
pilling 4

**FIRE RESISTANCE**

BS 5852 - Ignition source  
0 (Cigarette)  
BS 5852 - Ignition source  
1 (Match flame equivalent)  
EN 1021-1 (Cigarette)  
EN 1021-2 (Match)  
EU Ecolabel

---

*TONICA 2 (available in 39 colours)*



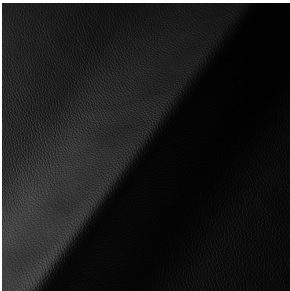
**COMPOSITION**  
100% WV

**ABRASION**  
45000 martindale  
lightfastness 6 - 7  
pilling 4 - 5

**FIRE RESISTANCE**  
EN 1021-1 (Cigarette)  
EN 1021-2 (Match)

---

*ULTRA (available in 6 colours)*



**ABRASION**  
lightfastness 6 - 7

**FIRE RESISTANCE**  
EN 1021-1 (Cigarette)  
EN 1021-2 (Match)  
TB 117-2013  
ANSI/BIFMA M7.1 (Total  
Volatile Organic  
Compounds)

---

*VESPER (available in 8 colours)*



**COMPOSITION**  
10% CO, 40% LI, 10% PA,  
10% PES, 30% CV

**ABRASION**  
40000 martindale  
lightfastness 5  
pilling 4

**FIRE RESISTANCE**  
EN 1021-1 (Cigarette)  
EN 1021-2 (Match)  
TB 117-2013

---