

m o o o i

## BFF Footstool

MARCEL WANDERS STUDIO

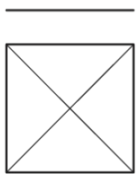


The award-winning BFF Sofa by Marcel Wanders is everyone's new best friend! A high quality, soft yet firm modular sofa system, consisting of a wide variety of modules for endless configurations.

### *BFF Footstool / Footstool*

#### *Dimensions*

66cm | 24"



66cm | 24"



36cm | 14.2"

#### *Product*

**WIDTH** 66cm | 26"

**HEIGHT** 36cm | 14.2"

**DEPTH** 66cm | 26"

#### *Packaging*

**WIDTH** 70cm | 27.6"

**HEIGHT** 40cm | 15.7"

**CUBAGE** 0.29m<sup>3</sup> | 10.28ft<sup>3</sup>

**LENGTH** 104cm | 40.9"

**WEIGHT** 16kg | 35.27lbs

#### *Technical*

**MATERIAL**

Wooden frame, steel springs, foam.

# Upholstery

## *BOUCLE* (available in 4 colours)

**COMPOSITION**

43% CO, 14% PA, 12% CV,  
3% PES, 28% PAN

**ABRASION**

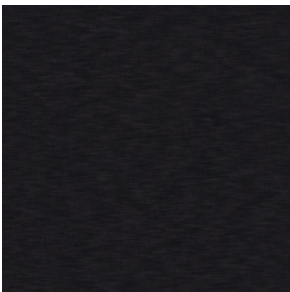
20000 martindale  
lightfastness 4 - 6  
pilling 4 - 5

**FIRE RESISTANCE**

EN 1021-1 (Cigarette)  
EN 1021-2 (Match)

---

## *DENIM* (available in 3 colours)

**COMPOSITION**

100% CO

**ABRASION**

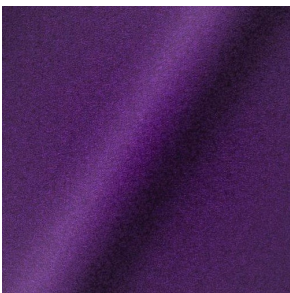
70000 martindale  
lightfastness 4  
pilling 3 - 4

**FIRE RESISTANCE**

BS5852 part 1 on request  
US. Cal. Bull. 117-2013

---

## *DIVINA 3* (available in 56 colours)

**COMPOSITION**

100% WO

**ABRASION**

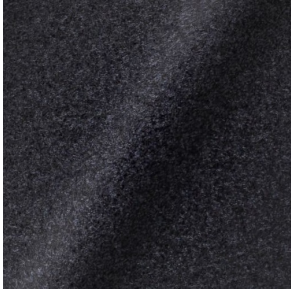
45000 martindale  
lightfastness 7  
pilling 3

**FIRE RESISTANCE**

BS 5852 - Ignition source  
0 (Cigarette)  
BS 5852 - Ignition source  
5 (Crib 5)  
BS 5852 - Ignition source  
1 (Match flame equivalent)  
EN 1021-1 (Cigarette)  
EN 1021-2 (Match)  
TB 117-2013  
EU Ecolabel

---

*DIVINA MD (available in 27 colours)*



**COMPOSITION**  
100% WO

**ABRASION**  
45000 martindale  
lightfastness 6  
pilling 3

**FIRE RESISTANCE**  
BS 5852 - Ignition source  
0 (Cigarette)  
BS 5852 - Ignition source  
5 (Crib 5)  
BS 5852 - Ignition source  
1 (Match flame equivalent)  
EN 1021-1 (Cigarette)  
EN 1021-2 (Match)  
EU Ecolabel

---

*DIVINA MELANGE 3 (available in 60 colours)*



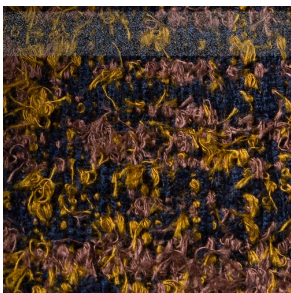
**COMPOSITION**  
100% WO

**ABRASION**  
45000 martindale  
lightfastness 6 - 7  
pilling 3

**FIRE RESISTANCE**  
BS 5852 - Ignition source  
0 (Cigarette)  
BS 5852 - Ignition source  
5 (Crib 5)  
BS 5852 - Ignition source  
1 (Match flame equivalent)  
EN 1021-1 (Cigarette)  
EN 1021-2 (Match)  
TB 117-2013  
EU Ecolabel

---

*Bearded Leopard (available in 3 colours)*



**COMPOSITION**  
77% CV, 15% PES, 7% CO,  
1% PA

**ABRASION**  
15000 martindale  
lightfastness 4 - 6  
pilling 4

**FIRE RESISTANCE**  
BS5852 part 1 on request  
US. Cal. Bull. 117-2013

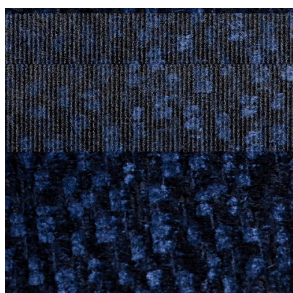
*Bison* (available in 1 colours)



*Armoured Boar, Crackle* (available in 1 colours)



*Calligraphy Bird* (available in 4 colours)



**COMPOSITION**

64% CV, 21% PES, 15%  
CO

**ABRASION**

50000 martindale  
lightfastness 4 - 6  
pilling 5

**FIRE RESISTANCE**

BS5852 part 1 on request  
US. Cal. Bull. 117-2013

*Dodo Pavone* (available in 3 colours)



**COMPOSITION**

12% CO, 88% PES

**ABRASION**

40000 martindale  
lightfastness 5  
pilling 4 - 5

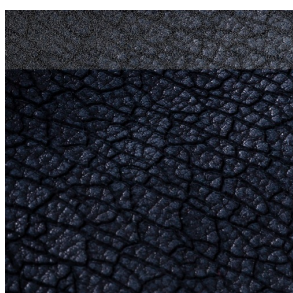
**FIRE RESISTANCE**

BS5852 part 1 on request  
US. Cal. Bull. 117-2013

*Dwarf Rhino Buffed (available in 1 colours)*



*Dwarf Rhino, Crackle (available in 1 colours)*



*Blushing Sloth Melange Mohair (available in 1 colours)*



**COMPOSITION**

85% WV, 15% WM

**ABRASION**

15000 martindale  
lightfastness 4 - 6  
pilling 2 - 3

**FIRE RESISTANCE**

BS5852 part 1 on request  
US. Cal. Bull. 117-2013

*Blushing Sloth Woolly Mohair (available in 1 colours)*



**COMPOSITION**

24% PES, 15% PA, 8% CO,  
24% WM, 29% WV

**ABRASION**

40000 martindale  
lightfastness 4 - 6  
pilling 3 - 4

**FIRE RESISTANCE**

BS5852 part 1 on request  
US. Cal. Bull. 117-2013



*JACQUARD, ANDAZ (available in 1 colours)*



**COMPOSITION**

34% CO, 30% CV, 24%  
LI, 12% PA

**ABRASION**

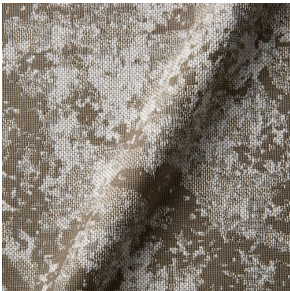
25000 martindale  
lightfastness 4 - 6  
pilling 4 - 5

**FIRE RESISTANCE**

BS 5852 - Ignition source  
0 (Cigarette)  
BS 5852 - Ignition source  
1 (Match flame equivalent)  
EN 1021-1 (Cigarette)  
EN 1021-2 (Match)

---

*JACQUARD, FRESC (available in 1 colours)*



**COMPOSITION**

52% CV, 38% CO, 10% LI

**ABRASION**

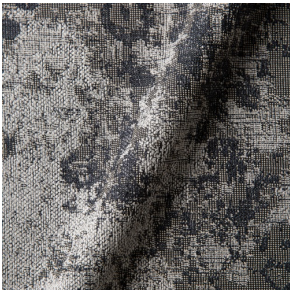
15000 martindale  
lightfastness 3 - 4  
pilling 2 - 3

**FIRE RESISTANCE**

BS 5852 - Ignition source  
0 (Cigarette)  
EN 1021-1 (Cigarette)  
EN 1021-2 (Match)

---

*JACQUARD, OLD (available in 2 colours)*



**COMPOSITION**

52% CV, 38% CO, 10% LI

**ABRASION**

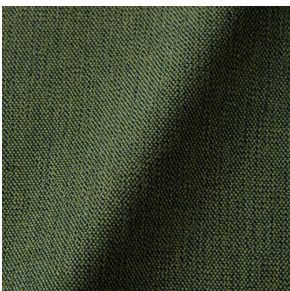
15000 martindale  
lightfastness 3 - 4  
pilling 2 - 3

**FIRE RESISTANCE**

BS 5852 - Ignition source  
0 (Cigarette)  
EN 1021-1 (Cigarette)  
EN 1021-2 (Match)

---

*JUSTO (available in 10 colours)*



**COMPOSITION**

15% CO, 35% PC, 10% PA,  
40% CV

**ABRASION**

50000 martindale  
lightfastness 5  
pilling 4

**FIRE RESISTANCE**

EN 1021-1 (Cigarette)  
EN 1021-2 (Match)  
TB 117-2013

*LISCIO (available in 11 colours)*



**COMPOSITION**

35% WO, 35% CV, 21%  
CO, 9% PA

**ABRASION**

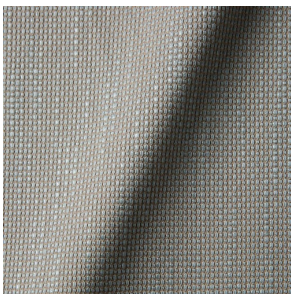
30000 martindale  
lightfastness 4 - 6  
pilling 4

**FIRE RESISTANCE**

TB 117-2013

---

*MACCHEDIL GREZZO (available in 10 colours)*



**COMPOSITION**

47% CO, 20% CV, 18%  
PA, 8% LI, 5% PC

**ABRASION**

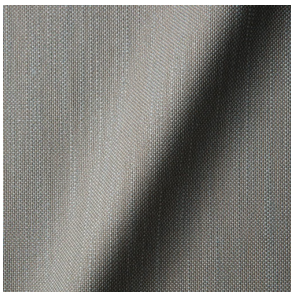
15000 martindale  
lightfastness 3 - 5  
pilling 4 - 5

**FIRE RESISTANCE**

BS5852 part 1 on request

---

*MACCHEDIL SOTTILE (available in 10 colours)*



**COMPOSITION**

49% CV, 24% PES, 21% LI,  
6% CO

**ABRASION**

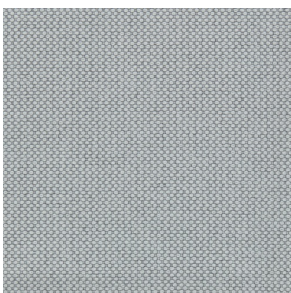
20000 martindale  
lightfastness 3 - 5  
pilling 2 - 3

**FIRE RESISTANCE**

BS5852 part 1 on request

---

*MERIT (available in 43 colours)*



**COMPOSITION**

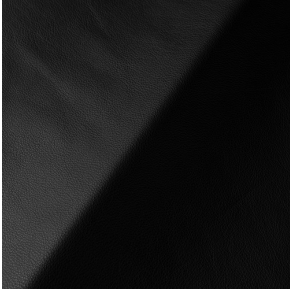
24% PES, 76%

**ABRASION**

85000 martindale  
lightfastness 7  
pilling 4

---

*SAVANNE (available in 3 colours)*

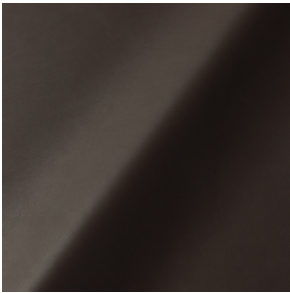


**FIRE RESISTANCE**

EN 1021-1 (Cigarette)  
EN 1021-2 (Match)  
TB 117-2013  
OEKO-TEX

---

*SHADE (available in 6 colours)*



**ABRASION**

lightfastness 3 - 4

**FIRE RESISTANCE**

EN 1021-1 (Cigarette)  
EN 1021-2 (Match)  
TB 117-2013

---

*SOLIS (available in 9 colours)*



**COMPOSITION**

60% WO, 30% PES, 2%  
PA, 3% PC

**ABRASION**

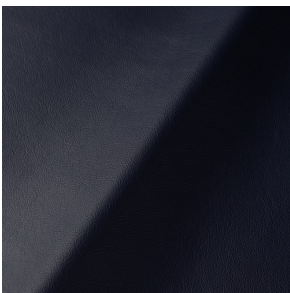
40000 martindale  
lightfastness 5  
pilling 3 - 4

**FIRE RESISTANCE**

EN 1021-1 (Cigarette)  
EN 1021-2 (Match)  
TB 117-2013

---

*SPECTRUM (available in 11 colours)*



**ABRASION**

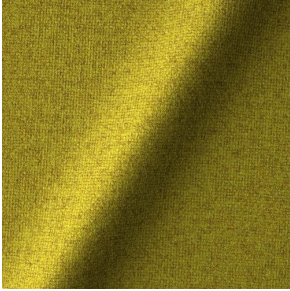
lightfastness 6 - 6

**FIRE RESISTANCE**

EN 1021-1 (Cigarette)  
EN 1021-2 (Match)  
TB 117-2013  
OEKO-TEX



*TONICA 2 (available in 39 colours)*



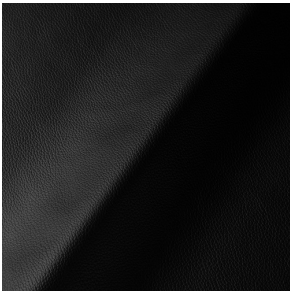
**COMPOSITION**  
100% WV

**ABRASION**  
45000 martindale  
lightfastness 6 - 7  
pilling 4 - 5

**FIRE RESISTANCE**  
EN 1021-1 (Cigarette)  
EN 1021-2 (Match)

---

*ULTRA (available in 6 colours)*



**ABRASION**  
lightfastness 6 - 7

**FIRE RESISTANCE**  
EN 1021-1 (Cigarette)  
EN 1021-2 (Match)  
TB 117-2013  
ANSI/BIFMA M7.1 (Total  
Volatile Organic  
Compounds)

---

*VESPER (available in 8 colours)*



**COMPOSITION**  
10% CO, 40% LI, 10% PA,  
10% PES, 30% CV

**ABRASION**  
40000 martindale  
lightfastness 5  
pilling 4

**FIRE RESISTANCE**  
EN 1021-1 (Cigarette)  
EN 1021-2 (Match)  
TB 117-2013

---