



# Experience Equine Excellence

Elite Equine Group are committed to providing premium quality products, delivery and value that elevates your equine experience.

Supported by the world's most dynamic and highly skilled ecosystem of partners and providers.



# EQUESTRIAN INFRASTRUCTURE

Providing superior turnkey equine solutions through custom design, manufacturing, installation and support.



## STABLE

Our Elite Equine Group horse stables are ideal for all requirements, for private use, horse livery stables and riding stables, equestrian recreation or sport, ponies and derby winners.

Our customised stables will enhance any facility – not only now, but in the long term. This is guaranteed by their high quality, durability, and outstanding function.



## STABLE – DESIGN AND BUILD

When working with us, you can rely on a full service, competent consulting and on safe, horse-oriented products. Our expertise is based on long-term experience in working on various projects with the best experts worldwide.

EliteBuild Solutions our sister construction company can offer you the complete equine design and build packages and look after the complete project from design, council planning approval stage right through to equine fit-out.



## STABLE ACCESSORIES

Our stable original accessories round off our range of products and were developed for you using all our know-how. As always our focus is on durability, safety and everyday convenience. It goes without saying that all accessories are also designed exclusively with horses in mind.

# WINDOWS AND DOORS

Crafting windows and doors specifically engineered to meet the demands of the equine industry.



## WINDOWS

Our window frames are made of hot-dip galvanised steel that may be powder-coated in a choice of colours. There are also hinged protection grilles available for all our stable windows. Our barn windows are also available with insulated glass.



## DOORS

Our hinged or sliding barn doors are a timeless design masterpiece for any horse barn. All barn doors are manufactured of high-quality material to make a statement in design and functionality to your horse barn. Our sophisticated doors are easy to handle, and the customised design is available in the size required. Our bespoke doors offer the highest comfort and make a statement.

# RUBBER MATTING AND JUMPS

Through our extensive rubber mat range, you can make your stable a fresh, clean, and comfortable environment for both you and your horses. Our rubber matting has excellent grip, ensuring your horses comfort and safety.

## EasyFix – Walkway Rubber Matting Solutions



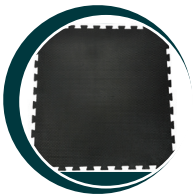
### MG EVO Matting – 1.700m x 1.150m x 25mm

The hexagonal diamond grip provides an excellent grip in walkway floor areas. The high grip and cushion surface design ensures horses and handlers walk with confidence.



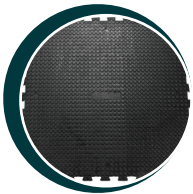
### MG Motion Matting – 1.800m x 1.030m x 28mm

Designed with honeycomb on the underside, this provides excellent comfort and deflection when your horses and handlers are walking through your breezeway areas.



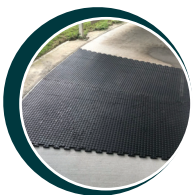
### Versa Matting – 1.000m x 1.000m x 17mm

These mats provide a safe non slip matting solution for walkways, tie ups and equine floor areas. The Penny underside grip and drainage design ensures horses have a comfortable stable floor surface that keeps them safe when stabled.



### MG Max 4 Matting – 1.000m x 1.000m x 22mm

Designed to provide an excellent grip in walkway floor areas. The Penny high grip surface design ensures horses walk with confidence and handlers are also provided grip floor surface for their safety.



### Walker Matting – 2.200m x 1.000m x 18mm

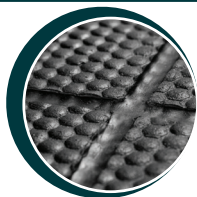
Designed to provide an excellent grip, comfort and shock absorption floor surface for your horses when walking on your walker. The Penny underside grip and drainage design ensures horses comfort and safety. Custom waterjet cut to exact size required for your walker making the fitting DIY system.



### Hurdles and Steeplechases

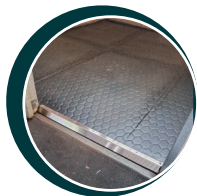
The racing hurdles are designed in 1.2m/4ft interlocking sections and constructed from artificial components which are strong, weatherproof and long lasting. The 3D moulded birch recreates the typical look and feel of natural birch and prevents splinter cuts and injuries. They are easy to install and maintenance free.

## EasyFix – Stable Rubber Matting Solution



### Deluxe Stable Matting – 1.800m x 1.200m x 17mm

EasyFix Deluxe Stable Mat is the ultimate flooring solution for your horse. A glue & sealed rubber matting system that provides a biosecure, hygienic, seamless and extremely comfortable stable flooring solution. The insulated stable 100% natural rubber flooring system creates a warm, safe and durable environment for horses.



### Diamond Deluxe Comfort Matting – 1.800m x 1.200m x 18mm

The high grip and cushion surface design ensures horses to be safe from casting and leg injuries when stabled. Shock Mat Underlay is 1m x 1m and is available in the thickness of 15mm, 20mm, 25mm, 30mm and 35mm.

## EasyFix - Washbay Rubber Matting Solution



### Soft Wall Matting – 1.800m x 1.200m x 25mm

These mats provide a safe cushioned wall surface to keep your horses safe from leg injuries when getting washed.



### MG4 Washbay Matting – 1.000m x 1.000m x 22mm

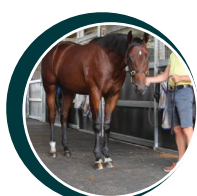
The MG Max 4 walkway mats are designed to provide an excellent grip on all walking surfaces. Suitable for DIY installation in a variety of applications including walkways, roadways, courtyards, parade rings and wash areas.

## EasyFix – Parade Ring Rubber Matting Solution



### Cobble Soft Pavers – 200mm x 160mm x 45mm

EasyFix Cobble Soft is a high-quality dog-bone shaped rubber tile, which creates an attractive walking surface. Our rubber pavers interlock and create an anti-slip surface. They are an ideal choice for high traffic areas such as parade rings, trot up areas and courtyards. The rubber paving creates a safe and confident walking surface for horses and is maintenance free.



### MG MAX 4 – 1.000m x 1.000m x 22mm

Designed to provide an excellent grip in parade ring walkway floor areas. The Penny high grip surface design ensures horses walk with confidence and handlers are also provided grip floor surface for their safety.

# DIAMOND GRID

DiamondGrid™ is 100% recycled polypropylene, engineered for load of up to 1000 Tonnes per square meter, with up to 96% permeability, Diamond Grid is ecologically friendly and highly durable.

## DIAMOND GRID

DiamondGrid™ delivers a high-quality product that will remain an equine industry leader in the drainage and soil erosion, using recycled plastic. After materials and load testing, plus time in the market, more applications for the product became apparent, with adoption in the following equine sectors

### Applications suitable for Diamond Grid include:

- Stable Breezeways
- Stable Floors Areas
- Horse Walker Floors
- Wash-bay Floor Areas
- Heavy Vehicle Haul/Access Roads
- Paddock Walkways
- Driveways and sloped walkways



UV STABILIZED



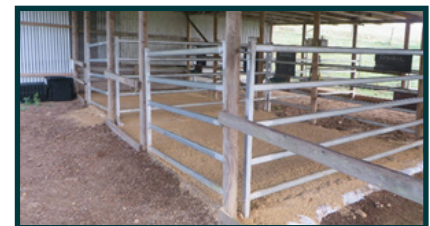
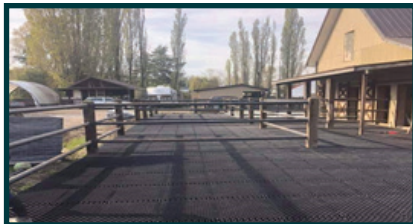
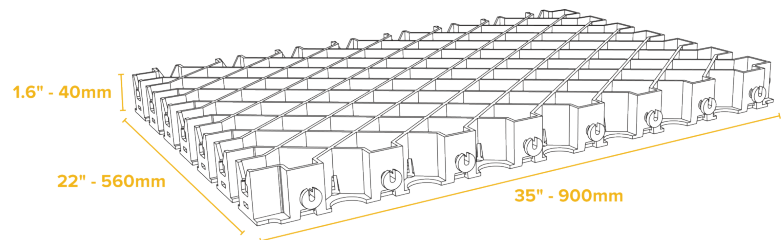
RELOCATABLE



DO-IT YOURSELF



INTERLOCKING SYSTEM



# HORSE FENCING

Providing a safe durable and economical equine fencing solution. Protect your horses and keep them safe and contained. All our fences are highly visible that will resist any impact.



## BUCKLEY FENCING

Our Steel Board Fence is the only post and rail board fence made of steel. It has the aesthetic appeal of traditional wood fencing but is much stronger and more durable. The lifetime expectancy of the Steel Board Fence is decades and the lifetime maintenance costs are virtually zero.



## LEGACY RAIL

Legacy Bold is a premium rail that closely resembles traditional board fence. It carries a Limited Lifetime Manufacturing Warranty, that is transferable one time.



Creating modern horse keeping conditions that are in line with the needs and nature of the horses.



## EQUIROPE

EquiRope is a premium, reliable electric fencing option, designed for safety. With 8 pure coated copper conductors, it always maintains excellent conductivity over long distances.

It is a highly visible, pure copper electric fence rope.



## BORDER LINE

This fence is a high quality nylon sighter wire for any horse property. Containing a nylon boundary line that is soft and pliable, so no special tools are needed for straining and installing. It is perfectly suited for all 'sighter wire' applications.

It's forgiving and flexible, making it horse-safe and a breeze to install. As it is a steel-free wire, it won't cause lacerations like steel or unforgiving wires.



**Bringing value-adding skills, expertise and experience to our clients.**

**Our experienced and highly qualified team are focused on protecting your interests and achieving your best outcomes.**



# HORSERAIL FENCING

Elite Equine Group is proud to be a distributor of Horserail® Fencing and accessories in Australia where we offer the genuine Horserail® Fencing system imported from the USA.



Ideal for arenas, roundyards, day yards, paddocks, pastures, tracks, and gallops with its patented spooler and buckle system, Horserail is easy to install, significantly reducing installation costs and time and it can be moved with no trouble if needed making it an ideal permanent or moveable horse fencing solution. Horserail fencing is impact resistant and won't break, splinter or warp. With its genuine 20 – 30 year limited manufacturer's warranty, Horserail is maintenance free with NO painting required and is available in black, and white.

Because we know that owners are concerned with the health and safety of their animals, we are committed to producing and distributing the safest products possible. Our fence rail products and their attachment mechanisms are designed and time tested for safety. We provide specially designed hardware for inside mounting of the fence rail, and use new bracing techniques to keep animals and people safe. Our attachment brackets fit virtually flush with the post, so there is less chance for injury. The smooth edged, rounded design of the tensioning spooler, coupled with the flexible surface of the rail ensure a safer atmosphere.



Due to Horserail's® design and strength characteristics the fence posts can be placed further apart resulting in less money spent on posts and less time installing those posts. One of the most significant features with our product is the reduced maintenance cost, with no broken boards, no splintering, no painting or mold treatment required. Additionally, Horserail® is easy to clean.



# FENCING PLASTIC POSTS

100% Recycled ♦ Aussie Made ♦ Tough as ♦ Looks great.

Our fencing products have been designed, tested, and developed in conjunction with materials science expertise from the University of Queensland, ensuring fit for purpose strength and durability.

Product longevity, and zero maintenance is a key design feature for fencing products. UV radiation, humidity, and sharp temperature change can shorten the lifespan of fencing products, and horse chewing further damages the integrity of a timber post, shortening the lifespan of the timber fence.



100% Aussie Made



100% Recycled



Termite & Rot Resistant



Chewproof



Construction Compatible



Chemical Free



Won't Crack or Splinter



Weatherproof



Built strong like a Red Buck



Self Insulating

## 100mm Star Picket Post Kit - (8mm wall)

100mm Star Picket Post Kit (8mm wall) Length: 1350mm  
Our star picket post kit features a strong 8mm internal wall. This kit is designed to dress up your star picket posts and to ready them for a variety of commercially available accessories. You can ram, cut, drill and screw into this post just as you would with timber. Product benefits include: 100% recyclable, weatherproof, chewproof and durable. 16mm wall available upon request.



## 120mm Fence Post - (8mm wall and 16mm wall)

120mm Fence Post (8mm wall) Length: 2100mm and 2400mm. Our 120mm diameter fence posts feature a durable 8mm internal wall. You can ram, cut, drill and screw into this post just as you would with timber, and can be used with any commercially available accessories.

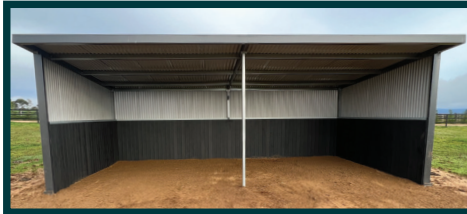
As per all of our plastic products, benefits include: 100% recyclable, weatherproof, chewproof and durable.



# EQUIBOARDS

Beauty, performance and practicality lie at the heart of our **Equiboards**.

Our durable boards are made from **85%** recyclable materials. The material boasts outstanding properties including **scratch resistant, splinter free, low maintenance, water-proof, weather resistance, environmental friendly** and **impact resistance**.



**Equiboards** are designed to outlast **natural timber**.

The durable and low maintenance equine boards are a seamless fit for equine-oriented developments.

**Equiboards** are crafted using environmentally friendly and recycled materials, making it a sustainable choice for your equine infrastructure needs.

## Colour Variants



LIGHT GREY ART



RED BROWN ART



COFFEE



BLUE GRAY

**Dimensions and Finish Options:** 138 mm X 31 mm. 3 Finishes – Modern, Classical and Fashion.  
**Made to specified lengths for bulk orders only.**

## Exclusive Qualities

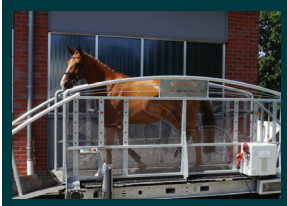
- Environmentally Sustainable
- Hassle Free Installation
- Easy To Upkeep
- Waterproof, Termite and Decay Resistant

## The Versatile Board For Equestrian Infrastructure

**Equiboards** are suitable for the following equestrian applications;

- Stable Wall Panelling
- Stable Internal & External Doors
- Arena Walls
- Horse Shelters
- Round Yard Wall Panelling
- Horse Walkers

# TREADMILLS AND AQUATRAINER



## SASCOTEC HORSE TREADMILL ELITE X 45

The longest horse treadmill for maximum safety.

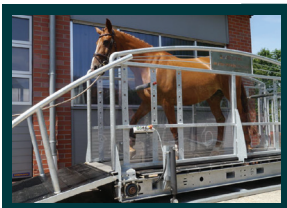
The Turbo X 45 is the fastest horse treadmill from Sascotec and is designed for canter training. The inwardly shaped railing ensures that the horse stays on track whilst training.



## SASCOTEC HORSE TREADMILL ELITE X 25

For advanced treadmill training in commercial and private stables.

The Elite X 25 is Sascotec's trotting treadmill. This sturdy horse treadmill is the ideal partner for strength and endurance training, even at trot. Optionally available control panels with training and analysis programmes allow for optimally adapted training concepts for your horse.



## SASCOTEC HORSE TREADMILL ELITE X 10

For the entry into treadmill training in commercial and private stables.

The Elite X 10 is Sascotec's walking treadmill. This device allows for the controlled exercise of your horse, whether for rehabilitation after injury or an addition in normal everyday training. With various available extras such as an integrated scale or a coin system to make routine work easier.



## SASCOTEC HORSE POWER AQUATRAINER

It has a **5-year warranty**, 5x longer life through the use of stainless steel. It is specially encapsulated external electric drive to prevent risk of electric shock.

It has optional incline technology for the treadmill. The water systems will meet the needs of your stable, from direct filling from well, cistern, plumbing, or full filtration. It is compatible with salt water

# STABLE ACCESSORIES

All our accessories are designed exclusively with horses in mind.



## TIE-UP AND WASH-DOWN AREA

The washing and cleaning areas can be designed individually with various equipment options. In this way, on-site conditions can be used optimally.

Tie-up posts and rings in various designs enable safe cleaning and washing of the horse. Separating bows are available in free-standing execution or with welded-on tie-up posts. They can be supplied with half-height or floor-to-ceiling hardwood panels if required.

All products are available in galvanised finish, with powder coating or in stainless steel and can be variable combined with each other.



## STABLE FEEDERS

Our stable feeders offer the greatest possible safety for horse and human and guarantee the fast feeding of even large horse populations. Using one of our feeding options, the internal horse stable doesn't have to be entered to feed the concentrated feed.

The feeding systems can of course be combined with any of our internal stable front.

Our stable feeders are available in a semicircular shape made of stainless steel or galvanised as rectangular mangers. The rotating mangers device is always equipped with a semicircular manger; for the feeding flap and feeding slot the shape of the manger is irrelevant.



## DRINKING BOWL

The drinking bowls are available in different models and designs. They can be mounted with or without a safety guard and the water quantity can be infinitely adjusted.

In addition to the normal watering systems, we can also offer you heated watering technology that reliably supplies your horses with fresh water even at sub-zero temperatures. The different heating systems can also be used without heated drinking bowls and convince with their reliable water circulation.



**ELITE**  **EQUINE**  
G R O U P



**E**lite Equine Group are a performance driven and innovative equestrian products provider. Our focus is providing the Australian equine industry with the best premium quality products and services from around the world.

Supported by the world's most dynamic and highly skilled ecosystem of partners and providers, we provide products and services that make your equestrian experience more functional and pleasant.

The Elite Equine Group is committed to providing the equine industry with the highest possible quality, customer service and care.

Our entire equine range undergoes rigorous quality control testing to ensure it meets the highest internationally recognised quality standards.



### Contact Elite Equine Group

Keith Callanan - Owner

Phone: 0406 917 991

Address: 2C - 82 Redland Bay Rd, Capalaba, Brisbane, QLD 4157, Australia

Email: [keith@eliteequinegroup.com.au](mailto:keith@eliteequinegroup.com.au)

Website: [www.eliteequinegroup.com.au](http://www.eliteequinegroup.com.au)