

## Birds to look out for:



Buzzard



Kestrel



Green Woodpecker



Great Spotted Woodpecker



Common gull



Mallard Duck



Chiff chaff



Pied Wagtail



Little Egret



Cuckoo

## Marvelous Mammals



Grey Squirrel



Water vole



Rabbit



Badger

## Wildlife Checklist

All these animals have been spotted in and around Sussex. How many can you find? Special finds are marked with a star!

## Amphibians and Reptiles



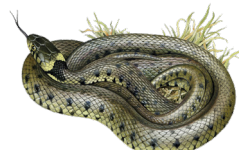
Common Frog



Common Toad



Great Crested Newt



Grass Snake

## Beetles, Bugs and Butterflies



Damselfly



Dragonfly



Brimstone Butterfly



Comma Butterfly



Bumble bee



Small Heath Butterfly



Green Shield bug



Ladybird



Earwig



Lesser Stag Beetle

## Not sure which bird?

Don't worry, you can write down what it looks like here and then you can look it up later!

### How big was it?

Was it smaller, larger or roughly the same size as:

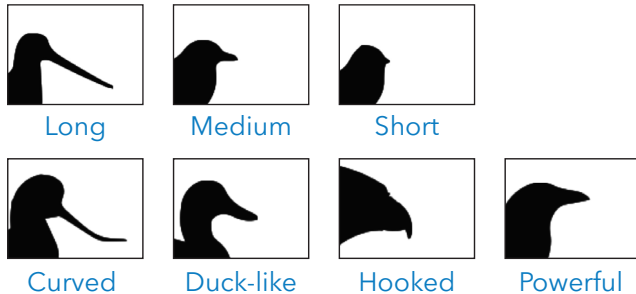


A Robin   A Blackbird   A Pigeon   A Mallard

### What colour were its feathers?

Black   Blue   Brown   Cream   Yellow  
Green   Grey   Orange   Red   White

### How long and what shape was the beak?



### What colour were its legs?

Black   Blue   Brown   Pink   Yellow  
Green   Grey   Orange   Red   White

**You can visit:** [www.rspb.org.uk/birds-and-wildlife](http://www.rspb.org.uk/birds-and-wildlife) and use the "Identify a Bird" tool to find out which bird you saw.

## About Epic Life

At Epic Life, we want to share our love for the outdoors through paddling, walking and other outdoor adventure activities to as many people as possible. We offer a wide variety of paddle classes and social sessions across our three sites in Tonbridge, Bodiam and Hastings for all ages and abilities. The main aim is to get people out on the water to have fun and feel safe in a social, friendly environment.

We believe that in order to fully enjoy the outdoors we need to look after it. This is why we organise and get involved with regular litter picks to care for the local environment and make sure that it will be there for us to share and enjoy in the future. Every bit helps, even picking up just one piece of litter each time you go out adds up and helps keep our outdoor spaces clean.

Why not explore Sussex on the water?

If you're interested in hiring a paddleboard or kayak to explore the Rother, please get in touch!

### Contact Us

Epic Life  
74 Tower Road West  
St Leonards on Sea  
East Sussex  
TN38 0RL

[teamepic@epiclifeco.uk](mailto:teamepic@epiclifeco.uk)  
07377 184505

 @teamepiclife

 Epic Life



## River Rother Wildlife Checklist

Your guide for identifying the local birds, bugs and other animals living in and around Sussex

