

AGO MOSQUITO TRAP



REPLACEMENT GLUE BOARDS

Specially formulated adhesive is designed to catch female mosquitoes during the breeding cycle. Proven successful in testing by Centers for Disease Control and Prevention, the CDC actively uses Catchmaster® AGO Trap Replacement Glue Boards in numerous mosquito monitoring and population reduction programs.

Item
#32AGO
Packed
192 replacements per case (48 replacements per inner box)
Trap Size
20.25 x 6.1875"

FEATURES

- Maximized glue surface
- Tested, proven adhesive
- Pesticide free
- UV resistant adhesive formulation
- Moisture resistant substrate
- Economical



Replacement Glue Board designed to fit AGO traps



Adhesive designed to catch mosquitoes



FOR MORE INFORMATION CONTACT YOUR REGIONAL SALES REPRESENTATIVE
catchmasterpro.com | info@catchmasterpro.com | 1.800.458.7454

AGO MOSQUITO TRAP

A Surveillance Tool Designed To Catch Female Mosquitoes During The Breeding Cycle

Item
#OVI-1
Packed
2 traps per case
Trap Size
12.5 x 17.25"

Item
#32AGO
Packed
192 boards per case (4, 48-count inner boxes)
Trap Size
20.25 x 6.1875"

OVI-CATCH™

NON-TOXIC

Environmentally Safe | Contains No Pesticides

ECONOMICAL

Reduced Labor and Equipment Costs
No Batteries or Electricity Required

EFFECTIVE

Key Component for Integrated Mosquito Management
Traps and Kills Adult Mosquitoes, Especially *Aedes aegypti*

Prevents Hatching of Up to 150 Eggs Per Female

EASY TO USE

Rugged, Durable Molded Design
Easy to Assemble, Service and Maintain

#OVI-1

MADE IN THE USA

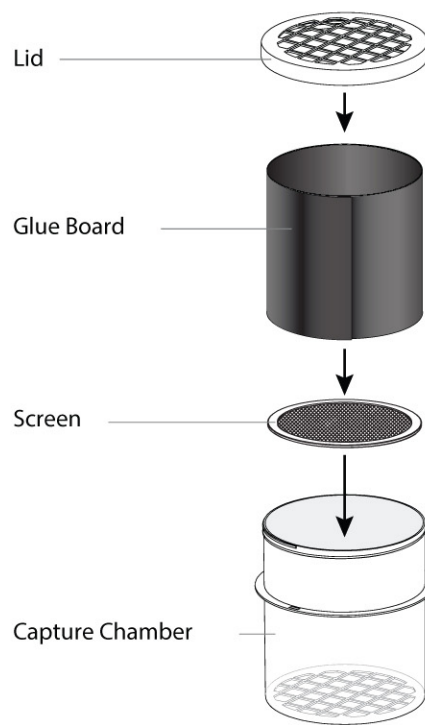
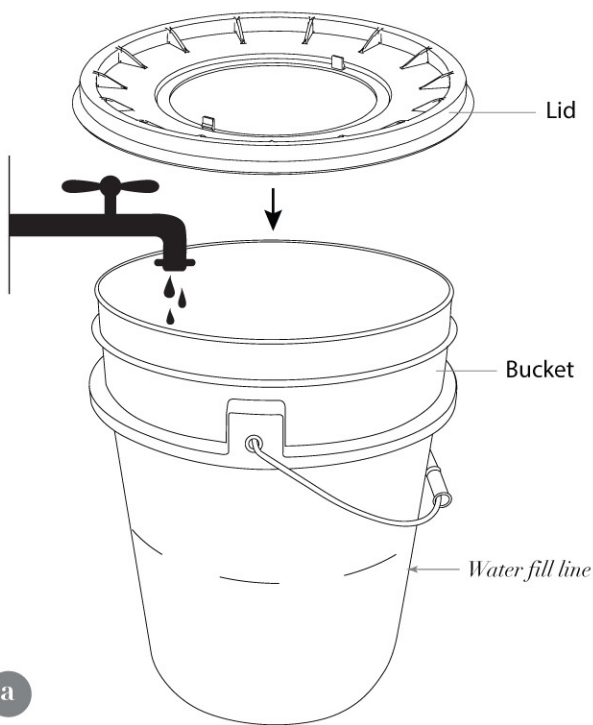


#32AGO - REPLACEMENT GLUE BOARD

Maximized glue surface | Tested, specially formulated adhesive for mosquito applications | Environmentally safe, non-toxic | Pesticide-free economical moisture resistant boards | Made in the USA

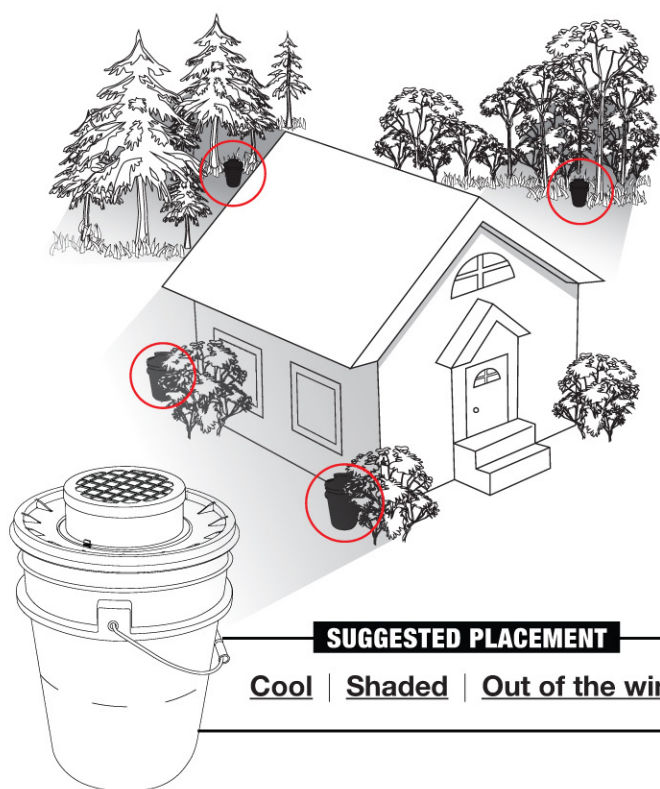
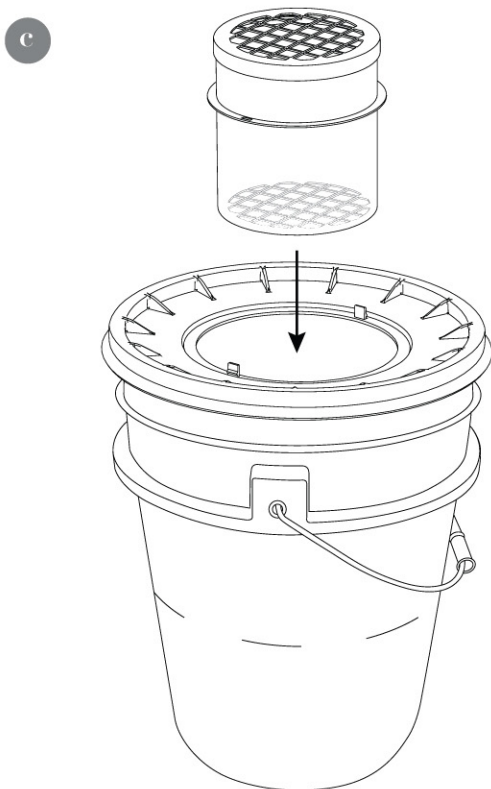


FOR MORE INFORMATION CONTACT YOUR REGIONAL SALES REPRESENTATIVE
catchmasterpro.com | info@catchmasterpro.com | 1.800.458.7454



INSTRUCTIONS

- 1 Fill the 5-gallon container with 2.5 gallons of tap water, just below the drainage slits. [**Figure a**]
- 2 Add about a handful of organic matter, preferably hay, to the water.
- 3 Put the lid on the 5-gallon container. [**Figure a**]
- 4 Place the screen on the bottom of the capture chamber. [**Figure b**]
- 5 Separate the glue board pair. Install the glue board to the capture chamber's interior, sticky side facing inward.
- 6 Screw on the chamber lid. [**Figure b**]
- 7 Position the capture chamber with screw-on lid on top, by snapping into the lid. [**Figure c**]
- 8 Set the trap in the backyard of the property in an area cool, shaded, moist, and out of the wind. Aim to place the black trap in a contrasting environment. [**Figure d**]



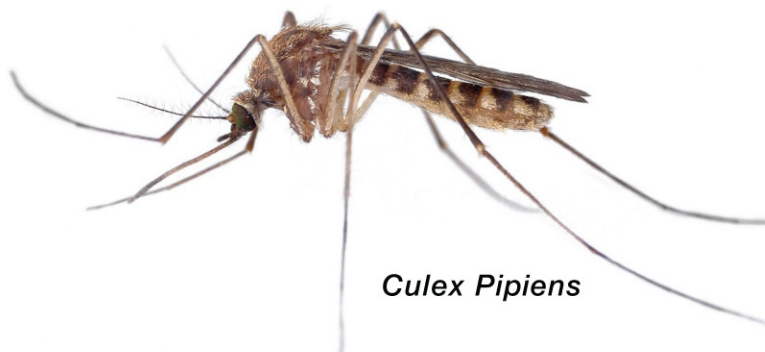
The Yellow Fever Mosquito, ***Aedes aegypti***: How It Lives and Why It is So Difficult to Control

The scientific name of the primary mosquito that spreads Zika virus is Aedes aegypti. Its common name is the Yellow Fever mosquito, or YFM. It is unique and difficult to control for the following reasons:

- 1** All mosquitoes require water to complete their life cycle. The YFM prefers to breed in any type of artificial container that will hold fairly clean water, such as tires, birdbaths, discarded rubbish, plant drainage saucers, clogged gutters, tarps, etc.
- 2** Only a small amount of water is required – even a bottle cap can produce over 100 mosquitoes. Multiple containers in one yard will be infested. The life cycle can be completed in as little as 5-7 days.
- 3** The YFM glues her eggs individually along the waterline inside the container. When the eggs are flooded, they hatch. If they are not flooded, they can remain viable for a year or more, even if the container dries out.
- 4** Only the female YFM bites because she requires the protein found in blood to produce her eggs. After one bite, the female can produce 125-150 eggs. Most kinds of mosquitoes don't bite humans but the YFM bites humans about 95% of the time.
- 5** Adult YFM mosquitoes only fly about 150 yards or so from the breeding site. So, if an adult is caught in a trap, it indicates that there is mosquito breeding close by.
- 6** Most types of mosquitoes feed at dusk and in the evening. The YFM feeds mostly during daylight hours, but will also feed in the evening.
- 7** The adult YFM prefers to live and often breed indoors, in close association with humans. They tend to bite from the knees down, are easily interrupted during feeding, and are often not even noticed.
- 8** The YFM is highly resistant to almost all of the pesticides that we use today so other methods such as trapping and removal of breeding sites are necessary.



Aedes aegypti



Culex Pipiens

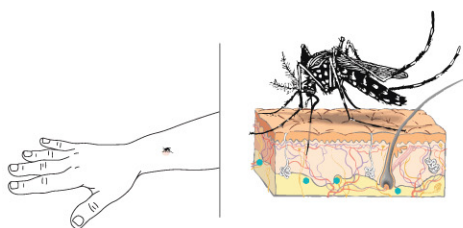
Aedes aegypti + OVI-CATCH™

The Yellow Fever Mosquito

AGO Mosquito Trap

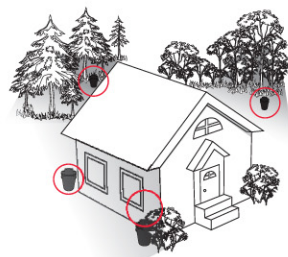


1 Female needs blood for egg production



- Only female mosquitoes bite
- Require protein in **blood to produce eggs**
- Prefer to bite during daytime but will bite in evening
- Tend to bite from knees down – not obvious

2 Mosquito explores for ideal egg-laying environment



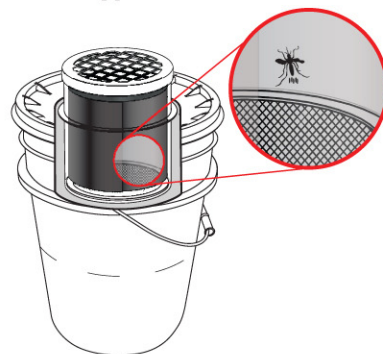
- Eggs develop in about 4 days
- One blood meal produces about **125-150** eggs
- Female seeks place that is **cool, shaded, moist** and **out of the wind**
- Prefers artificial containers – tires, cans, birdbaths, children's toys, etc.

3 AGO Trap | NO PESTICIDES



- The female mosquito is attracted to the trap by its appearance and odor from hay infusion (**d**.)
- Mosquito enters the trap through the capture chamber lid (**a**.) and gets stuck on the glueboard (**b**.)
- Female is then prevented from reaching water, unable to pass through the screen (**c**.)

4 Mosquito is trapped



- Mosquito is trapped, and dies after being stuck on the glueboard
- Majority of eggs will not hatch

TRAP MAINTENANCE

Trap is easy to assemble, service and maintain | Service every 1-2 months or as needed



FOR MORE INFORMATION CONTACT YOUR REGIONAL SALES REPRESENTATIVE
www.catchmasterPRO.com | info@catchmasterPRO.com | 1-800-458-7454