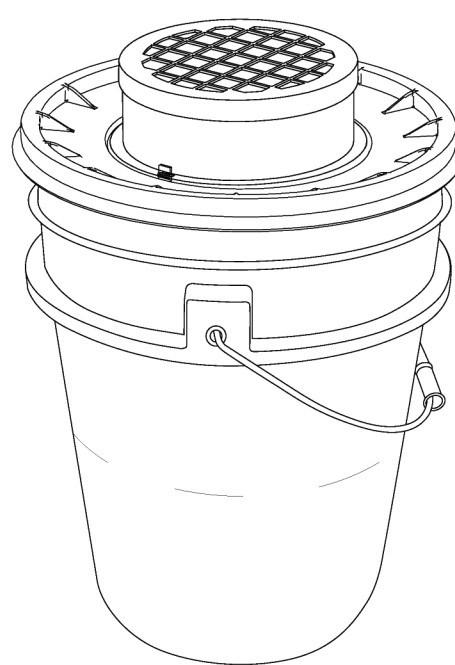


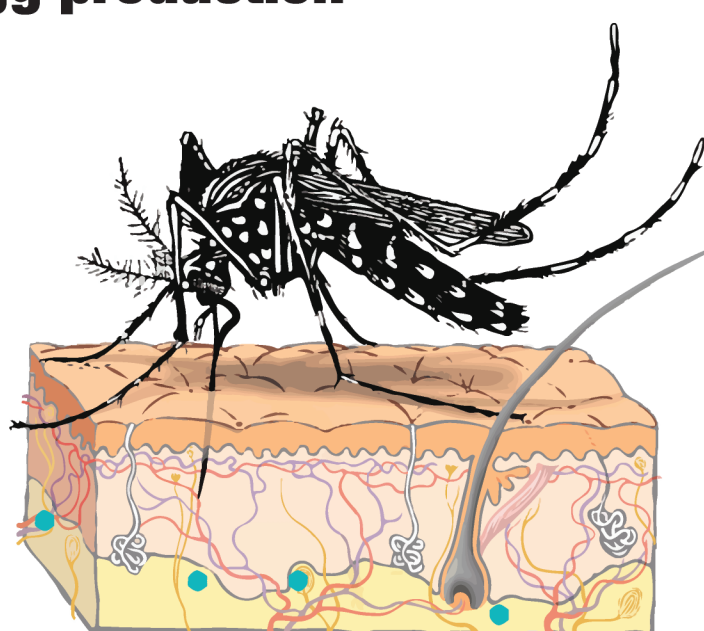
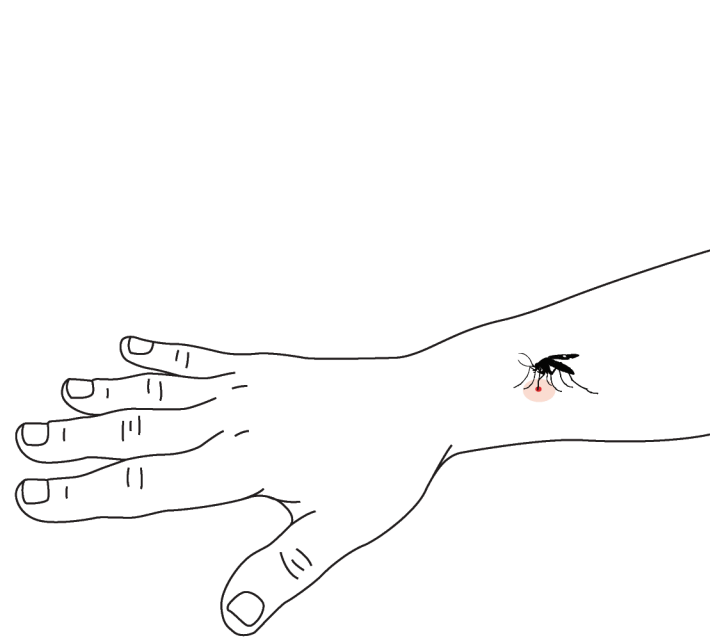
Aedes aegypti + OVI-CATCH™

The Yellow Fever Mosquito

AGO Mosquito Trap

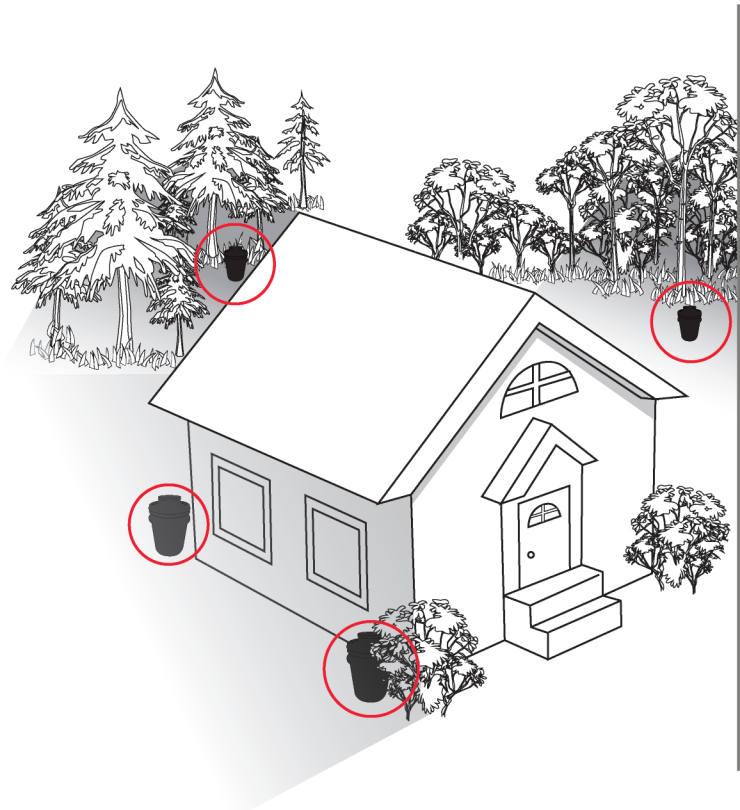


1 Female needs blood for egg production



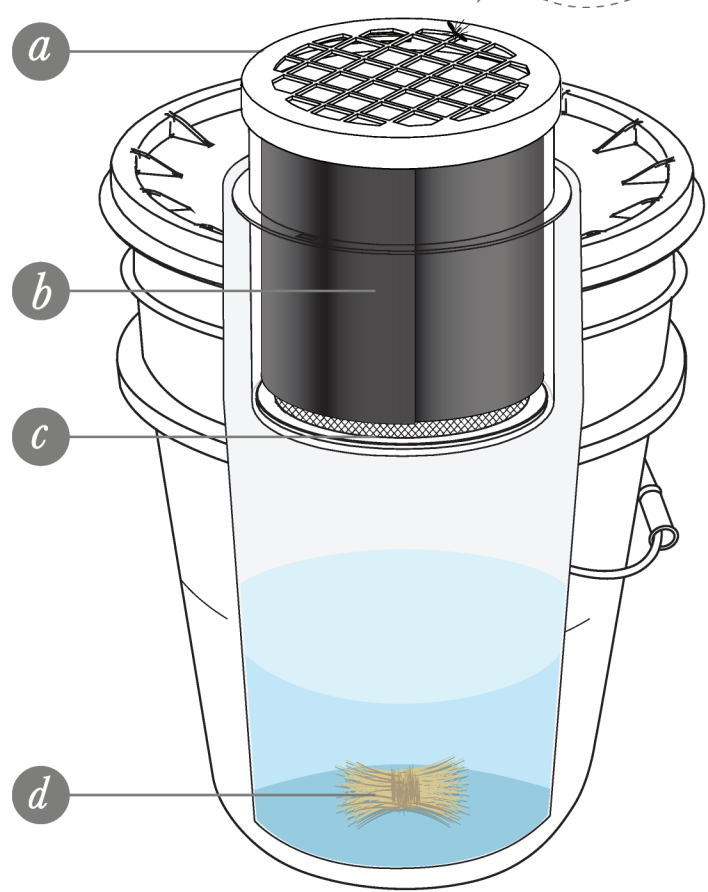
- Only female mosquitoes bite
- Require protein in **blood to produce eggs**
- Prefer to bite during daytime but will bite in evening
- Tend to bite from knees down – not obvious

2 Mosquito explores for ideal egg-laying environment



- Eggs develop in about 4 days
- One blood meal produces about **125-150** eggs
- Female seeks place that is **cool, shaded, moist** and **out of the wind**
- Prefers artificial containers – tires, cans, birdbaths, children's toys, etc.

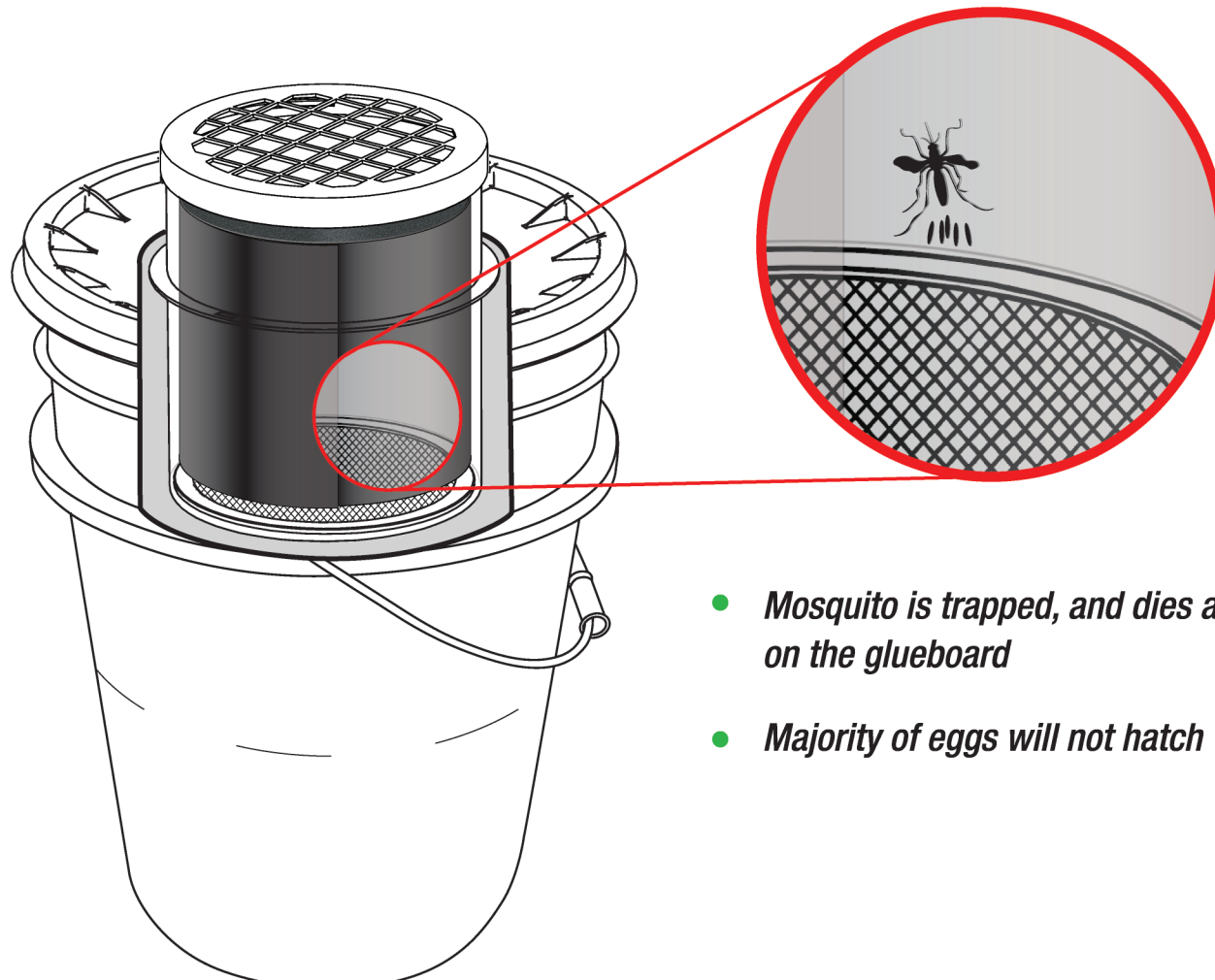
3 AGO Trap



NO PESTICIDES

- The female mosquito is attracted to the trap by its appearance and odor from hay infusion (**d.**)
- Mosquito enters the trap through the capture chamber lid (**a.**) and gets stuck on the glueboard (**b.**)
- Female is then prevented from reaching water, unable to pass through the screen (**c.**)

4 Mosquito is trapped



- Mosquito is trapped, and dies after being stuck on the glueboard
- Majority of eggs will not hatch

TRAP MAINTENANCE

Trap easy to assemble, service and maintain | Service every 1-2 months or as needed