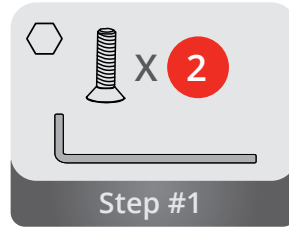
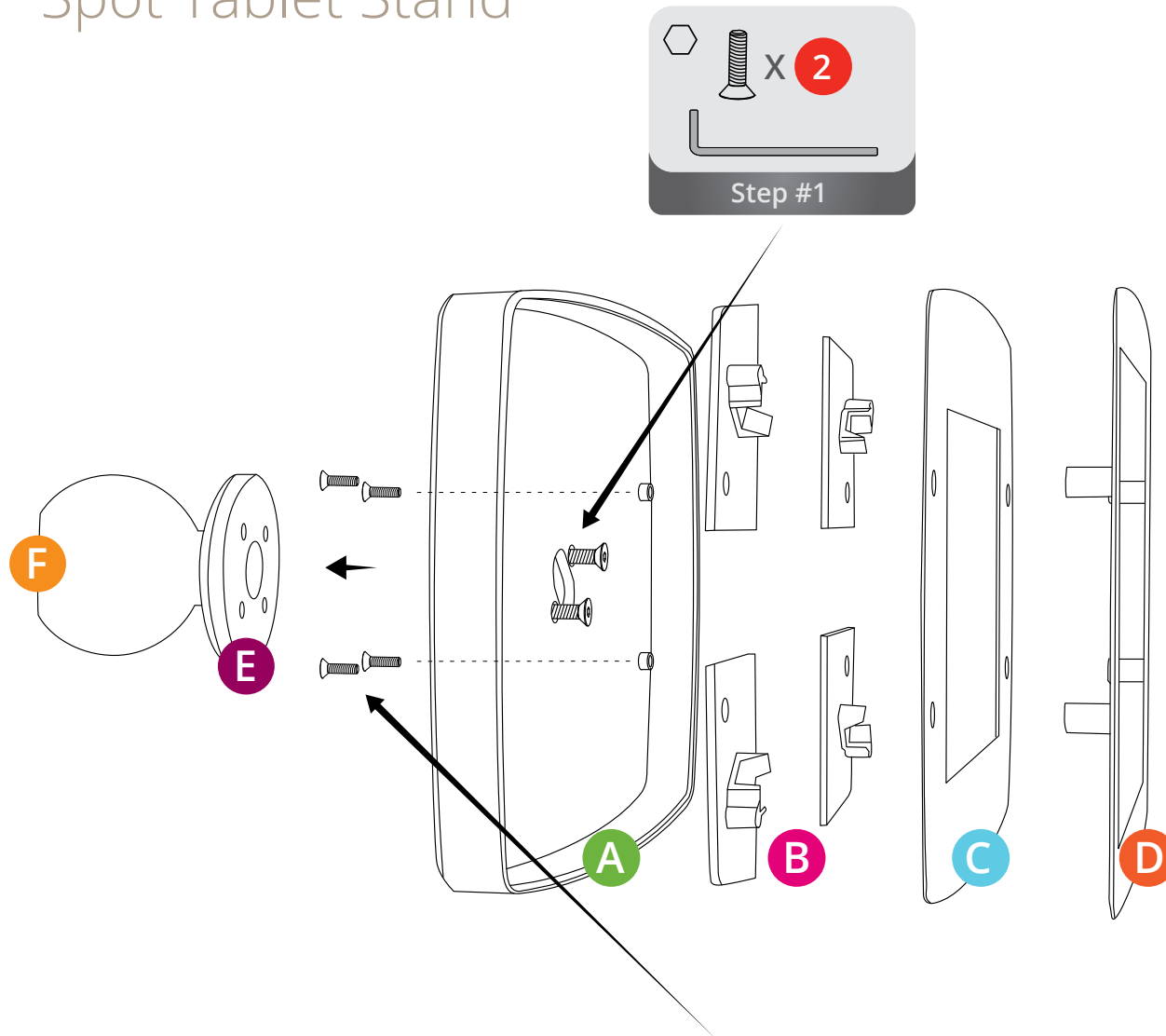


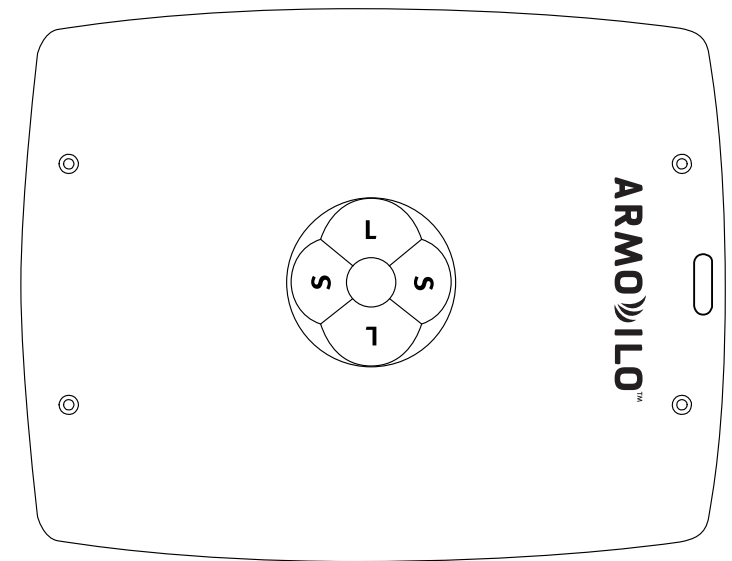
# ARMODILO™

## Spot Tablet Stand



## Spot Assembly

- 01 Connect **A** to **E** in either landscape or portrait orientation using two screws\*
- 02 Insert 4 x **B** into **A**
- 03 Insert your tablet
- 04 Cover Tablet with **C**  
*Remove protective plastic on first use*
- 05 Cover **C** with **D**
- 06 Secure **D** by putting 4 security screws in through the back of **A**



**\*ORIENTATION:** Ensure Spot is oriented properly by following the above mounting pattern.

- The “L” Surfaces align to the long edge of the enclosure
- The “S” Surfaces align to the short edge of the enclosure

*Back of tablet enclosure shown*

For full Assembly Instructions and Warranty Information visit: [armodilo.com](http://armodilo.com)