

AMBRANE



*Be Your
Own Hair Stylist*

HAIR DRYER



Cool Air
Button



Foldable
Handle



Multiple
Speed Settings



1600W
Power Input

WELCOME

Thank You For Purchasing Ambrane AHD-21 Hair Dryer. To ensure smooth operation, please read this user manual carefully before operation.

PACKAGE CONTENTS

- 1 U AHD-21 Hair Dryer
- 1 U Detachable Concentration Nozzle
- 1 U User Manual with Warranty Card

PRODUCT OVERVIEW



PRODUCT SPECIFICATIONS

- Equipped with DC Motor
- Rated Power Input: 1600W
- Rated voltage: AC 220-240 V
- Rated frequency: 50/60 Hz
- 2 speed heater settings (0-1-2)
- Cool Air function for gentle hair drying
- Independent cool air spring button
- Concentrator nozzle for precise use
- Foldable handle for storage ease
- 1.8 Meters long cord for effortless use
- Hanging-up hoop for convenience
- Compact and lightweight
- Honeycomb inlet at the back prevents tangling of hair

OPERATING INSTRUCTIONS

- Insert the power cord's plug into a socket.
- Clip the concentrator nozzle at the front of the hair dryer if required.
- Switch on the power supply.
- Set the On/Off switch to the required settings to start operation.
- Push the power switch to position 1 to start the warm airflow.
- For better speed, push it further to speed 2 and use as desired.
- Keep dryer's air intake vents unobstructed and free from hair while drying the hair.

STEPS FOR COOL AIR FUNCTION

- Initiate the airflow by switching the power button to speed 1 or speed 2 setting (as required).
- Press the cool air spring button to use cool airflow for drying and styling your hair.
- Keep the button pressed till the time you wish to use the cool airflow.

HOW TO USE THE DEVICE FOR HAIR STYLING

HAIR DRYING BASICS

- Shampoo and condition your hair, rinse the hair thoroughly.
- Towel dry hair to remove excess moisture.
- Divide your hair into sections.
- Dry hair by directing hot or cool air through the hair strands.

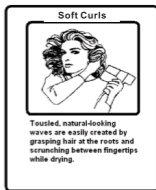
STYLING GUIDE

- For styling, divide the hair into small sections.
- Use the dryer along with a styling brush.
- Direct hot air through a section of hair at a time.
- Move dryer steadily across each section so that hot air passes through the hair strands.
- Direct the flow of air towards the hair, not scalp.
- To avoid over-drying, do not concentrate heat on any one section for long. Keep the dryer moving as you style.
- For quick styling, dampen hair with a mist of water before styling with the dryer.

FOR SOFT CURLING

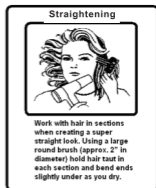
- When using the dryer to create curls and waves, dry hair almost completely using the warmest setting.

- Style using the lower speed setting and styling comb. This will set the style in your hair.
- Use the concentrator when you need to focus on a small area (such as a curl or a wave) or when you want to set curly hair.



FOR BASIC HAIR STRAIGHTENING

- Work with hair divided into small sections.
- Use a large round brush (approx. 2-inches in diameter) to hold hair firmly in each section.
- Bend ends slightly while drying.
- Repeat on all hair sections to create a neat look.



HOW TO CLEAN

- Do not use liquid or aerosol cleaners.
- Clean your appliance externally with a soft, damp (not wet) cloth.

WHAT TO DO WHEN THE HAIR DRYER IS NOT WORKING

- Make sure the power cord of the hair dryer is plugged into the main supply and switched on
- Make sure the ON/OFF button is on.
- Check the fuse in the plug, if damaged get it repaired
- For any other assistance, contact the service center support team at care@ambraneindia.com

SAFETY INSTRUCTIONS:

- Avoid proximity with water, do not use near bathtubs, showers, basins or other vessels containing water.
- Always unplug the hair dryer after use.
- If the appliance falls into water, unplug it immediately. Do not reach into the water until the power has been disconnected.
- The hair dryer should never be left unattended when plugged in.
- Do not pull or wrap power cord around the hairdryer.
- Close supervision is necessary when this appliance is used by, on, or near

children.

- Do not use attachments not recommended by the manufacturer.
- Never operate the hair dryer if it has a damaged cord or plug or if it has been dropped into the water. Return the appliance to the service centre for examination and repair.
- Keep the cord away from heated surfaces.
- Never block the air vents at the rear of the hair dryer. Do not insert any objects into the air vents.
- Do not use outdoors, or where aerosol products are being used.
- Do not direct hot air towards eyes.
- Attachments may get hot during use. Use with care when handling them.
- Do not put the hair dryer down while it is operating.
- Check that the voltage rating of this appliance matches your supply voltage.

WARRANTY CARD AND TERM & CONDITIONS

- **NOTE:** To Claim the warranty, all information on the warranty certificate should be completed along with original invoice.
- All warranty information, product features and specifications are subject to change without prior notice.
- All matters are subject to Delhi Jurisdiction.

Customer's Name		Contact Number	
Customer's Address			
Model No.			
Purchase Date		Invoice Number	
Dealer's Stamp			

- AHD-21 comes with 365 days warranty from the date of purchase.
- Warranty can not be claimed if the product is damaged by wrong operation or force majeure.

CUSTOMER CARE:

AMBRANE INDIA PVT. LTD.

220, Second Floor, D-Mall, Netaji Subhash Place, Pitampura, Delhi,
India - 110034

Contact No.: +91-8929700222, **E-mail:** care@ambraneindia.com,

Web: www.ambraneindia.com

#StayConnected

GET SOCIAL WITH US/[AmbraneIndia](#)



www.ambraneindia.com