



# AAA PRESETS

FIND YOUR UNIQUE STYLE

# HOW TO ADD LUTS IN PREMIERE PRO

Using LUTs can be helpful when color grading footage in Premiere Pro. you are able to get a good color base and can build from that point to grade your entire project. I usually like to edit clip by clip to account for light/color inconsistencies.

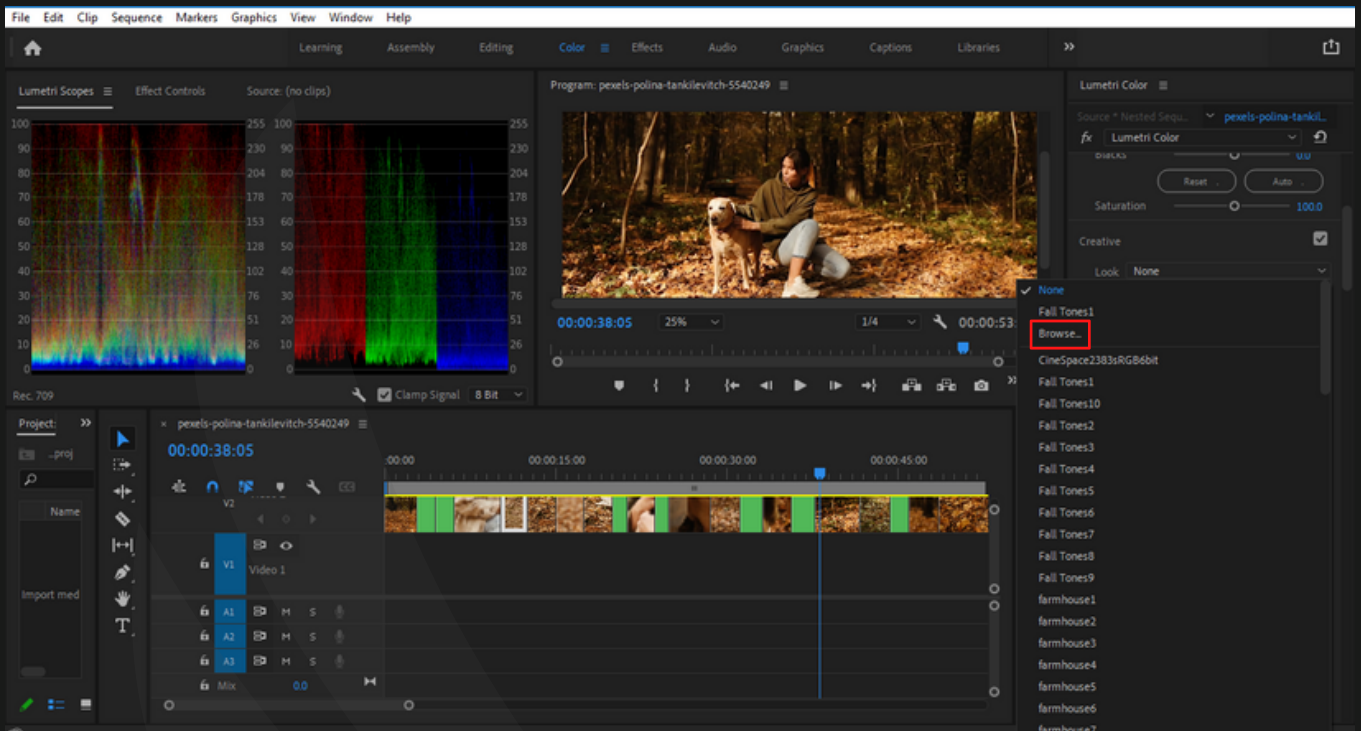
## First Method

- **Import Footage**

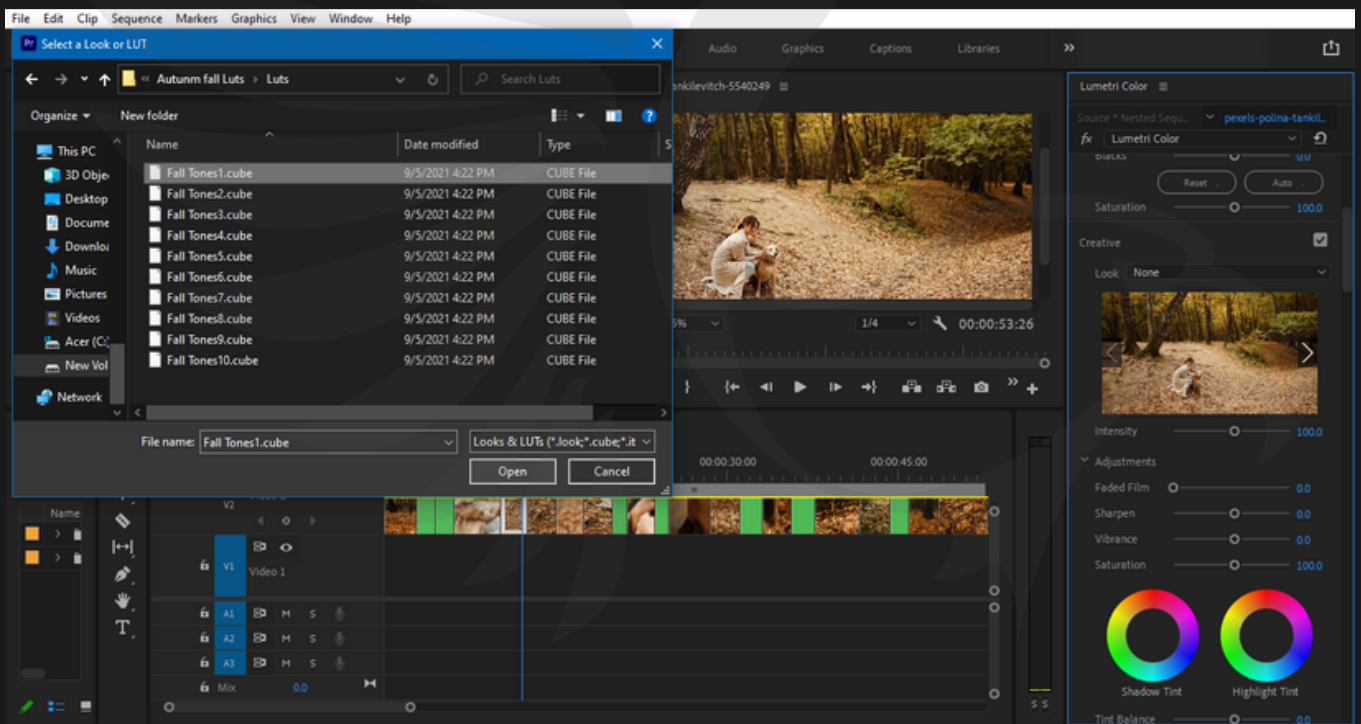
Start by importing your videos or open a recent project. Once you have your clips ready to go, navigate to the Color Tab and look for Basic Correction.

- **Input Custom LUTs**

In the Basic Correction section, you'll see a button titled 'Input LUT' with the clickable word 'None' next to it. Click this button and then click Browse.

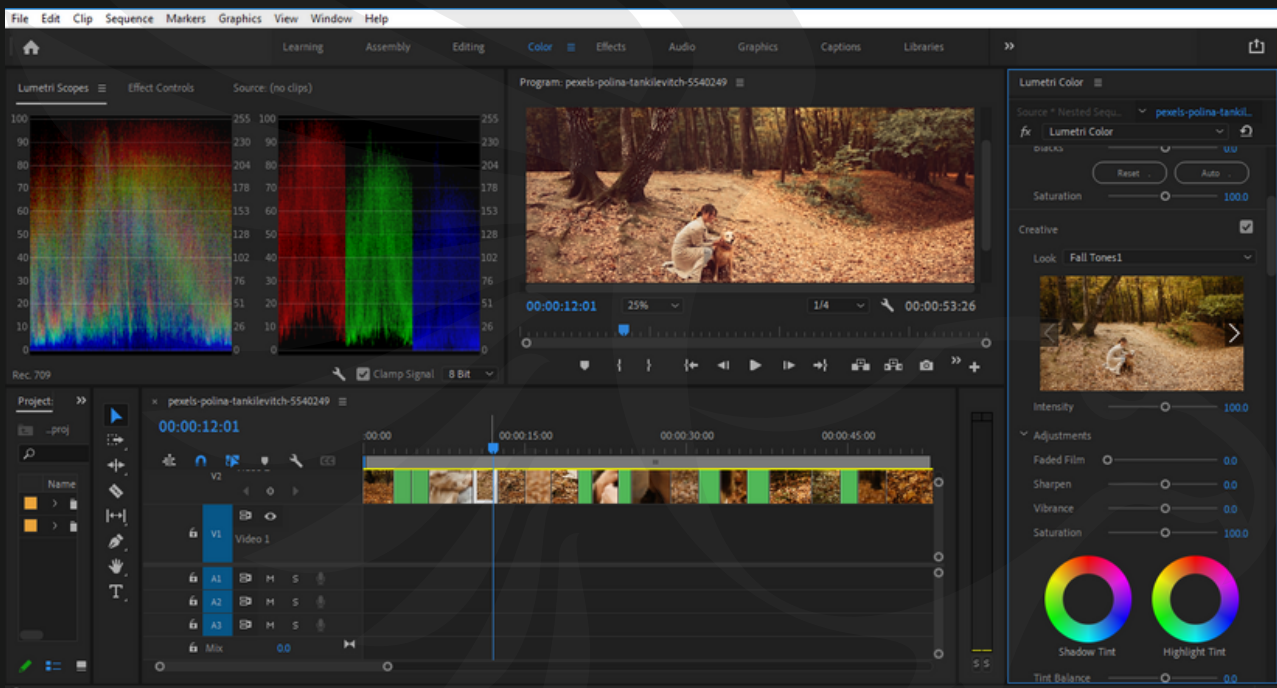


Clicking 'Browse' will open up your folders. Navigate to the desired LUT you downloaded to apply it to your clip.



Once applied, you can see the effects of the LUT on your footage. You'll also see the color waveforms change in your Lumetri Scopes tab to give you an idea of how the LUT affects your clip.

From here you can adjust the White Balance, Tone, Highlights/Shadows, and more to get your clip just right.



## Second Method

### 1. Place LUTs in Correct Folders

To install multiple LUTs, first create one or more of the folders listed below if they are not already created. Then copy your LUT files to the correct folder.

- **MAC INSTALL**

**/Library/Application Support/Adobe/Common/LUTs/Creative**

**/Library/Application Support/Adobe/Common/LUTs/Technical**

- **WINDOWS INSTALL**

**C:\Program Files\Adobe\Common\LUTs\Creative**

**C:\Program Files\Adobe\Common\LUTs\Technical**

### 2. Open Premiere and Select Clip

Open Adobe Premiere and Select your Clip or Adjustment Layer in the Sequence where you want to add the LUT.

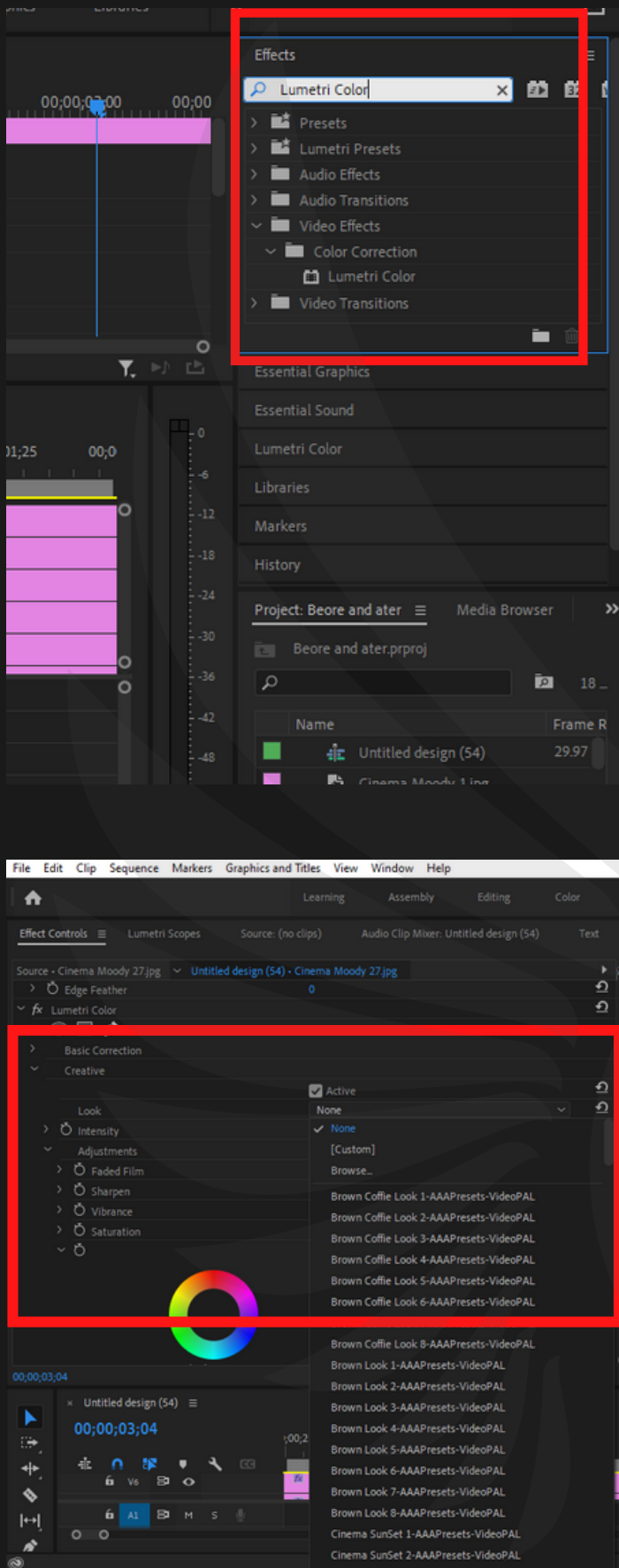
### 3. Add Lumetri Color Effect

Open the Color Workspace by clicking on the Color Tab. Or navigate to your Effects browser and select “**Lumetri Color**” and drag it onto your footage.

## 4. Open the Creative Tab to Load the LUT

In the Lumetri Panel, Open the Creative Tab and select the “Look” dropdown list to navigate to your LUTs we previously added to the Creative Folder. The LUT you select will now be loaded and you should see the look applied to your footage.

\*Conversion LUTs in the Technical Folder appear in the Basic Correction “Input LUT” dropdown list.

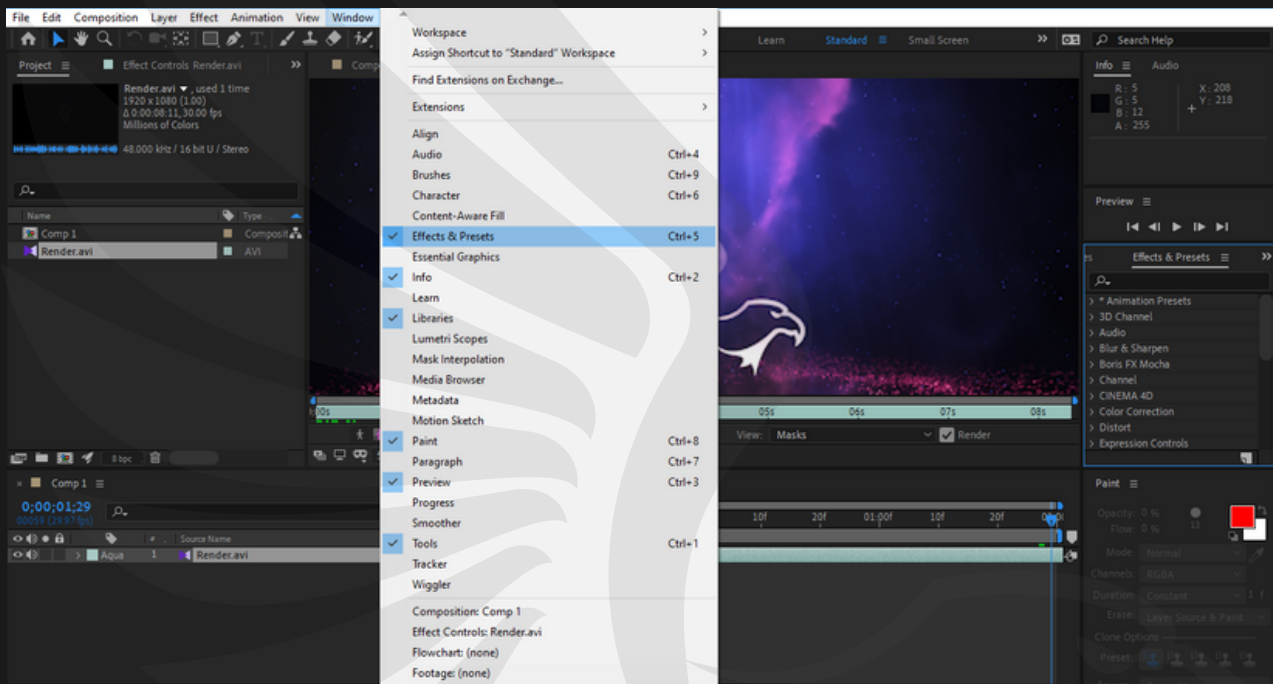


# HOW TO IMPORT LUTS IN AFTER EFFECTS

- Import Your Footage

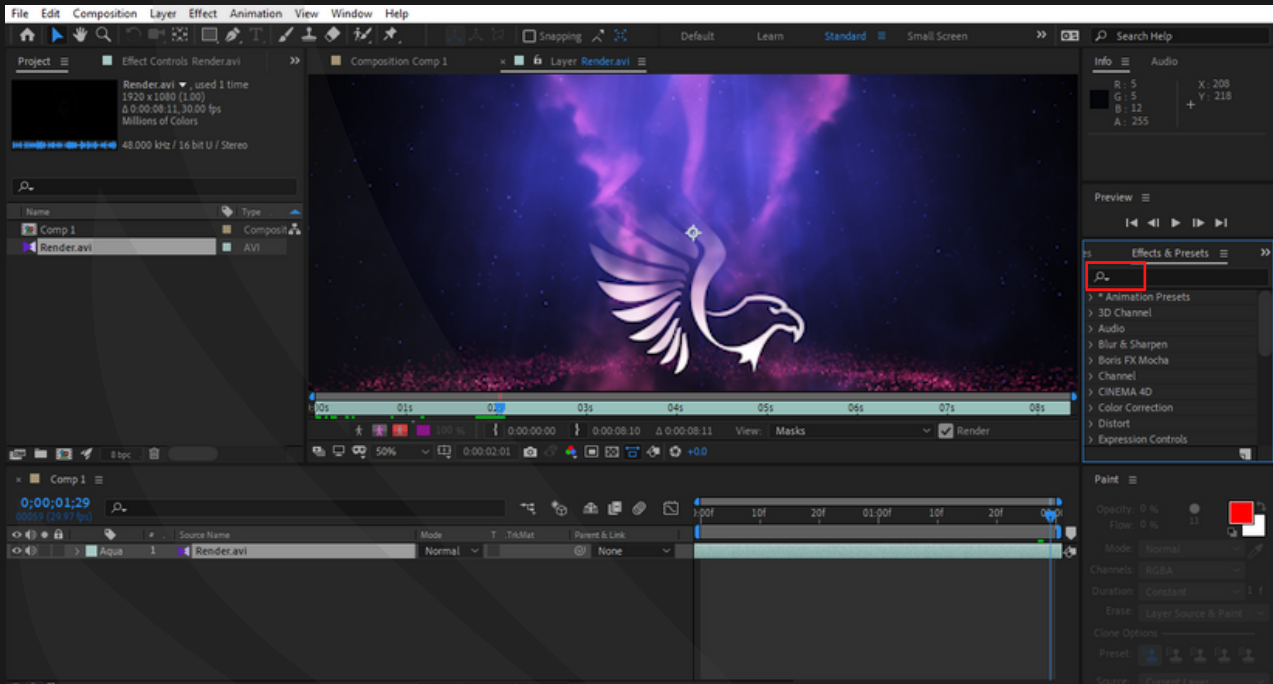
To import a lut in After Effects you'll need some footage that you can apply it to. Start by importing your clips and organizing your composition.

- Find the Effects & Presets Panel

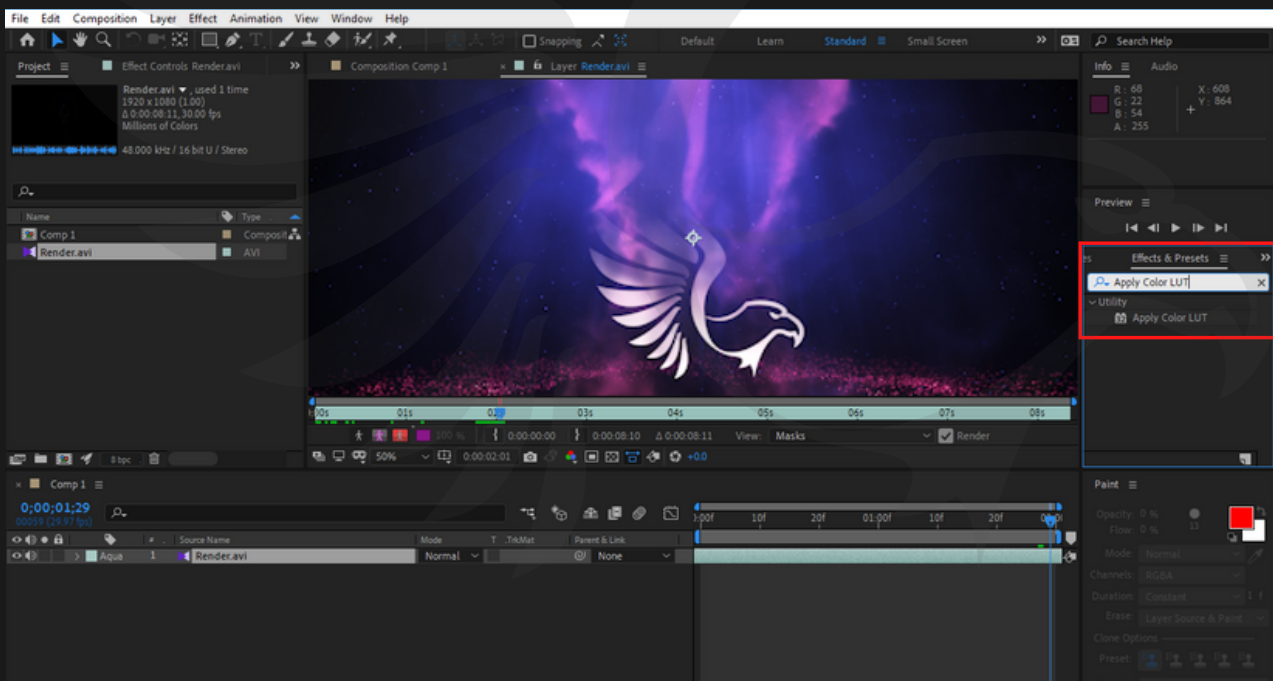


Once you have your clips in the composition, you'll need to find the Effects & Presets Panel. If you don't see it within your workspace you can find it by clicking **Window > Effects & Presets.**

The panel will then show up in your workspace allowing you to search for specific effects/presets that you can apply to your layers.

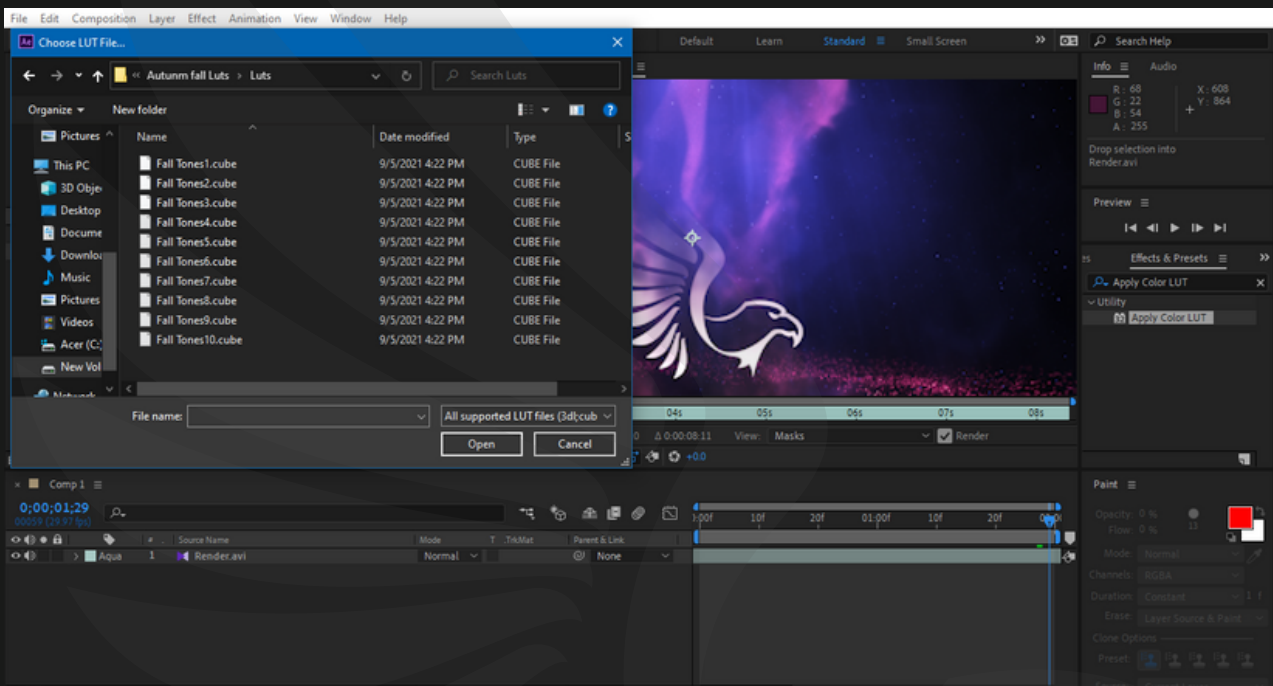


- Search for the 'Apply Color LUT' Utility





- Now that you have the Effects & Presets panel open, all you have to do is search for 'lut' or 'apply color lut' specifically to find the utility you'll use to apply LUTs in After Effects.
- Click and drag the utility onto your clip and it will open your documents where you can search for the specific LUT you'd like to apply to your footage.



- After you select a LUT, it will be applied to the clip that you added the Utility preset to. You can view the Effect Controls in the top left of your workspace where you can reset the LUT and/or choose a different LUT for your clip if you're going for a different look.

# HOW TO IMPORT LUTS IN FINAL CUT PRO X

- Import Your Clips Start by importing the clips you'd like to use for your project. You can create a project to organize all of the footage into one end video.
- Open the Effects Browser Once you have your clips ready, navigate to the right side of your screen and click the two overlaid boxes icon to show the Effects Browser. The Effects Browser is home to hundreds of effects you can apply to both video and audio components of your project.
- Add the 'Custom LUT' Effect to Your Clip After you open the Effects Browser, click 'Color' in the left tab and look for the Custom LUT effect on the right side once there. Click and select 'Custom LUT' and drag it over to apply on your clip.
- Choose a Custom LUT to Apply to Your Clip Now for the next part, you need to make sure the Inspector is showing. You can show/hide the inspector by clicking the button in the top right of the screenshot below with the three lines and sliders on it. Once you have that showing, you'll see the Custom LUT effect applied to your clip. Click the drop-down bar next to LUT and select
- 'Choose Custom LUT...' This will open up your files allowing you to find the LUT of your choice to
- apply to your clip. Find the .cube file and click 'Open' to apply the effect to your clip.
- Adjust the Intensity of the LUT
- Import Folder of LUTs , If you're working with more than one LUT at a time, you can import an entire folder at once. This way, the folder title will show up when you click the LUT drop-down allowing you to choose from each set.

# HOW TO IMPORT LUTS IN DAVINCI RESOLVE

- Open Davinci Resolve Project Settings The first step is to open your Davinci Resolve project. Then navigate to the bottom right corner to click the Project Settings cog wheel.
- Click Open LUT Folder in the Color Management Section When the Project Setting pop-up menu shows up, select the Color Management tab. Next scroll down to the Lookup Tables section and click Open LUT Folder.
- Drag and Drop LUTs Open another finder window or download folder that contains your LUTs. Drag and drop the LUT **.CUBE** files into the Davinci Resolve LUT Folder. You can drag single **.CUBE** files or an entire folder of **.CUBE** files.
- Click Update Lists Close the folders and select Update Lists in Davinci Resolve. This will refresh the dropdown menu in Davinci Resolve.
- Add LUTs to Footage from the 3D Input Lookup Table The LUTs are now available under the 3D Input Lookup Table dropdown menu. The dropdown menu will have each individual **.CUBE** file you added to the Davinci Resolve LUTs folder.
- Pick a LUT and Click Save , Select the LUT of your choice from the dropdown menu, then click Save to apply it.

# FAQ

## Why Choose Us?

- Takes only a single click.
- High-quality result.
- Easily editable effects.
- Non-destructive Workflow.
- Completely experimented with & tested.

## Compatibility:

- Final Cut Pro X
- Davinci Resolve
- Premiere Pro
- After Effects

## If you have any questions?

- Don't worry about it you can contact us any time.
- Our email address – [info@aaapresets.com](mailto:info@aaapresets.com)

**Follow us on social media for more details and new updates**



[aaapresets.com](http://aaapresets.com) / [aaluts.com](http://aaluts.com)