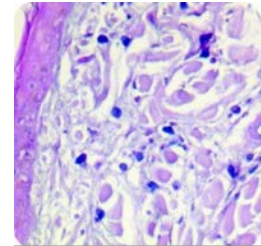


## Astra Blue Solution

**Description** Astra Blue Solution is designed to stain mast cells bright blue. This reagent can be used in combination with various counterstains to provide contrast.

**Tissue Component** Mast Cells  
**Staining Color/Pattern** Blue



**Uses/Limitations** Not to be taken internally.  
For in vitro diagnostic use only. Histological applications.  
Do not use if reagents become cloudy. Do not use past expiration date.  
Use caution when handling reagents. Non-Sterile.

**Storage Conditions** 18-25°Centigrade

**Positive Control Tissue** Any well fixed paraffin embedded or frozen tissue section cut 3-6 microns.

**Precautions** Avoid contact with skin and eyes.  
Harmful if swallowed.  
Follow all Federal, State, and local regulations regarding disposal.

**Procedure**

1. Deparaffinize sections if necessary and hydrate to distilled water.
2. Stain tissue section with Astra Blue Solution for 30 minutes with frequent agitation.
3. Rinse quickly in 2 changes of distilled water.
4. Dehydrate quickly through 3 changes of absolute alcohol.
5. clear, and mount in synthetic resin.