

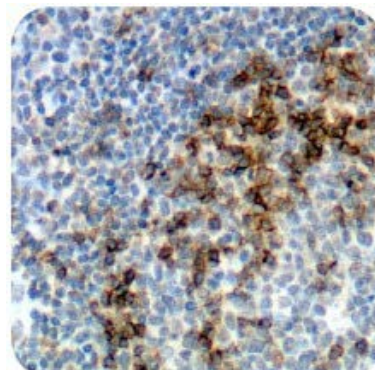
CD45RO, T-Cell: Clone UCHL1 (Ready-To-Use)

Description

Species:	Mouse
Immunogen:	BALB/C mice were immunized with IL-2 dependent
T cell line, CA1. Clone:	UCHL1
Isotype:	IgG2a, Kappa
Format:	This antibody has been pretitered and quality controlled to work on formalin-fixed paraffin- embedded as well as acetone fixed cryostat tissue sections. No further titration is required.
Specificity:	This antibody reacts with a 180 kD glycoprotein of CD45 family, occurring on most thymocytes and activated T cells but only on the portion of the resting T cells. It reacts with most thymocytes, a subpopulation of resting cells within both the CD4 and CD8 subsets and mature activated T cells. This antibody shows no reactivity with normal B or natural killer cells, but reacts with granulocytes and monocytes. Though this antibody is useful to identify T-cell lymphomas and leukemia, rare staining with B cell lymphomas reported.
Background:	The CD45RA and CD45RO isoforms of the leukocyte common antigen identify functionally distinct naive and memory T cell subsets. In vitro, CD45RA+ / CD45RO - peripheral blood lymphocytes (PBL) can be converted to CD45RA- / CD45RO + phenotype upon activation in the presence of IL-2. Both CD3+ and CD3-/CD56+ lymphocyte subsets can be converted to CD45RO + lymphocytes. Expression of CD45RO was observed only in response to IL-2 and was not observed during long-term culture in IL-4, IL-6, or IL-7.
Species Reactivity:	Human, Rhesus Monkey. Does not react with Rat. Others not tested.
Positive Control:	Tonsil or Lymph Node.
Cellular Localization:	Cell Membrane.
Titer/Working Dilution:	No further dilution is required.
Microbiological State:	This product is not sterile.

Uses/Limitations

Not to be taken internally.
For Research Use Only.
This product is intended for qualitative immunohistochemistry with normal and neoplastic formalin-fixed, paraffin-embedded tissue sections, to be viewed by light microscopy. Do not use if reagent becomes cloudy.
Do not use past expiration date.
Use caution when handling reagents.
Non-Sterile.





Instructions for Use AA00024-IFU

Rev. Date: Sep-16

Revision: 1

Page 2 of 2

Procedure

Staining of formalin fixed, paraffin embedded tissue sections is significantly enhanced by pretreatment with citrate-based antigen retrieval. We suggest an incubation period of 30 minutes at room temperature. However, depending upon the fixation conditions and the staining system employed, optimal incubation should be determined by the user. For maximum staining intensity, we recommend using AviBond Ultra for detection and DAB Clarity Ultra products for visualization.

Precautions

Contains Sodium Azide as a preservative (0.09% w/v).

Do not pipette by mouth.

Avoid contact of reagents and specimens with skin and mucous membranes.

Avoid microbial contamination of reagents or increased nonspecific staining may occur.

This product contains no hazardous material at a reportable concentration according to U.S. 29 CFR 1910.1200, OSHA Hazardous Communication Standard and EC Directive 91/155/EC.