

# JOIN, ASSEMBLE, HOLD

*London Design Festival  
Cromwell Place  
September 15-24*

A photograph of two people standing side-by-side against a plain, light-colored wall. Their heads are completely obscured by large, dense, and bushy structures made of dried, brown, fibrous plant material, resembling large, textured topiaries or sculptures. The person on the left is wearing a dark blue sweater with a patterned yoke and a green ribbed cuff. The person on the right is wearing a dark blue crewneck sweater and blue jeans. The overall aesthetic is minimalist and artistic.

THE NEW CRAFTSMEN



# JOIN, ASSEMBLE, HOLD

*The New Craftsmens' show for London Design Festival 2023, as part of Brompton Design District, presents two adjoining crafted interiors, rich with beautiful and tactile works that invite the makers' worlds and hands into our homes. In each room, a statement cabinet centrepiece provides a focal point, expressing both the physicality of the works and a feeling of connectivity evoked by the space. The installations will also include an abundance of turned wood vessels and contemporary examples of rare regional basketry.*

*For further information about any of the works shown or to find out more about bespoke commissions please contact [amy.fletcher@thenewcraftsmen.com](mailto:amy.fletcher@thenewcraftsmen.com)*





**JOIN,** *The Modern Kitchen*  
**ASSEMBLE,**  
**HOLD**

*The Modern Kitchen features crafted pieces that are connected or joined and conjure a sense of conviviality and togetherness. The Nailed Pantry overflows with an abundance of turned wood vessels and a hand-carved installation by Max Bainbridge playing homage to the humble spoon will adorn the walls.*





# Bibbings & Hensby

*The Nailed Pantry by Bibbings & Hensby is an exceptional example of vernacular furniture for the modern kitchen that evokes a sense of abundance and togetherness. A seemingly simple but highly skilled construction of pared-back joinery peppered with hand-forged nails and combined with textured riven handles invites you into the busy heart of the home. These highly original cabinets are designed to become modern heirlooms and imbue a sense of place and spirit of the makers.*



*The  
Nailed  
Pantry*





The Nailed Pantry  
Oak, riven ash handle,  
wrought iron nails,  
clear matte oil  
204 h x 140 w x 60 d cm

*The Woven Oak storage baskets at the base of the Pantry are made by Lorna Singleton. Lorna is of the UK's last remaining 'swillers', a specialist in weaving baskets using coppiced Oak. In 2017 Oak Swill Basketry was listed as a Critically Endangered Craft in the Radcliffe Red List of Endangered Crafts. To craft Swill baskets the Oak is Felled, cleft, boiled up and then riven into strips, the butt end of the Oak tree and the upper stem separated to make a rigid base and more flexible weavers.*



Lorna Singleton  
Woven oak Storage Baskets  
oak bark  
23 h x 62 w x 58 D cm



# Ash & Plumb

*The pendants draw inspiration from ancient British and European vessels, their fractured and eroded rims pushing green woodworking to its limits, while the decorative stitch detailing acts as a compelling material contrast. The result is a group of highly characterful and versatile lights which draw on and celebrate the natural beauty of the wood, bringing the outside into our homes.*



# Anticuous Ceiling Lights





Anticuous Ceiling Light I (scorched)  
English oak from Bayam Abbey in  
Kent & waxed black cotton cord  
30 h x 46 w x 41 d cm



Anticuous Ceiling Light III (leathered)  
English oak from Bayam Abbey in Kent & waxed  
dark brown cotton cord  
25 h x 52 w x 44 d cm

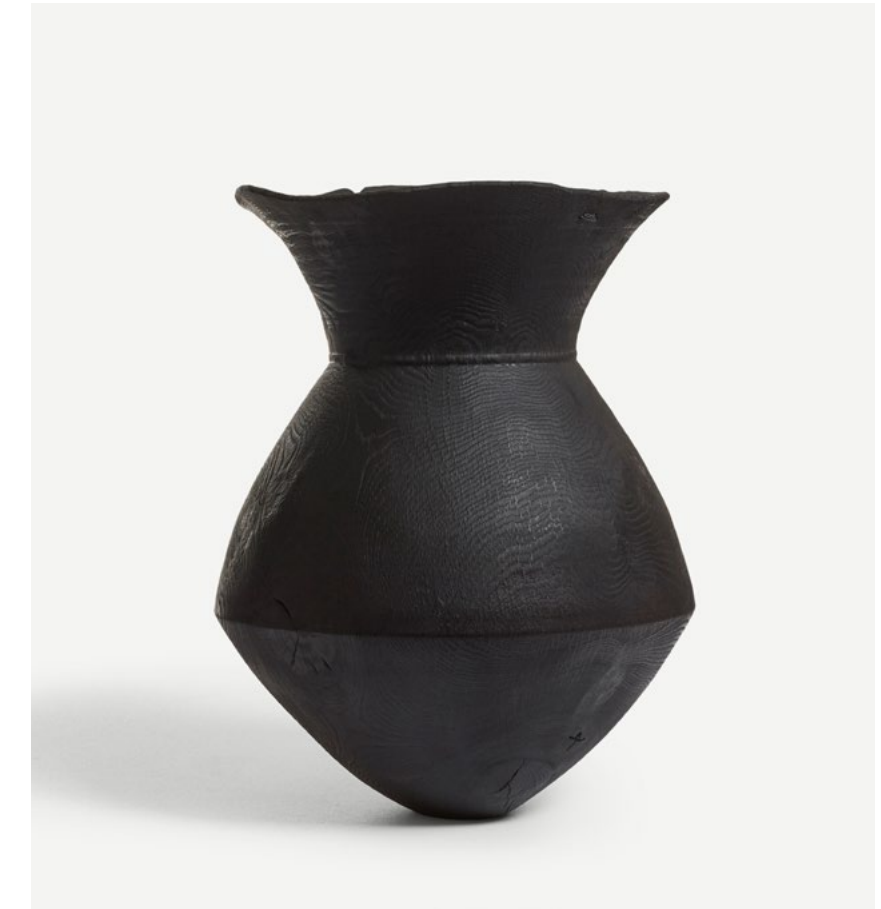




Anticuous Ceiling Light II (fade)  
English oak from Bayam Abbey in Kent & waxed  
dark brown cotton cord  
28 h x 57 w x 53 d cm







Charred Water Vessel with Mending  
Burnished oak  
40 h x 27dia cm



Leathered Cauldron  
Burnished oak  
30 h x 30 dia cm



Etruscan Vessel (large)  
Burnished oak  
19 h x 20 dia cm

Etruscan Vessel (small)  
Burnished oak  
16 h x 15 dia cm



Tall Etruscan Vessel  
Burnished oak  
45 h x 20 dia cm



Bell Vessel  
Burnished oak  
32 h x 24 dia cm





# Max Bainbridge

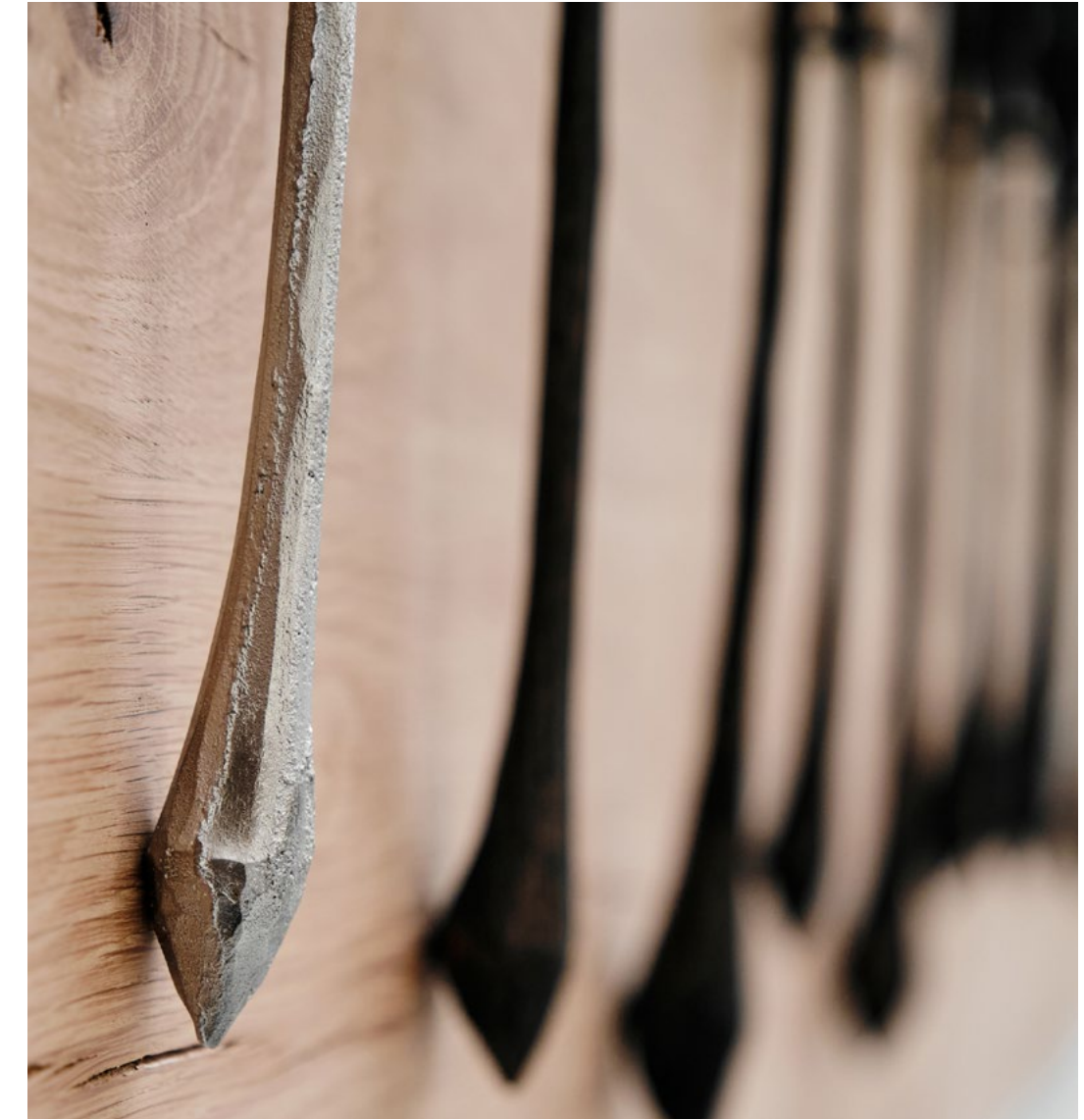
*“One cannot get away from the fact that these objects are inherently domestic; that we identify with them on a human level; something to cook with, to eat from and to feed our children with. This creates a unique connection that we all have with the spoon, that allows them to act as vessels for our own narratives and histories.” -  
Max Bainbridge*



## *The Last Supper*







The Last Supper, 2023  
Ebonised sweet chestnut, linseed oil  
and pewter on oak and blued steel nails  
60 h x 208 w x 10 d cm





Apostle Spoon I, 2023  
Spalted beech and linseed oil on  
rough sawn ash and blued steel nails  
37 h x 14.5 w x 4 d cm

Apostle Spoon II  
Burnt walnut and linseed oil on  
rough sawn sycamore and  
blued steel nails  
30.5 h x 17 w x 4 d cm

Apostle III  
Ebonised sweet chestnut and  
linseed oil on cleft beech and  
blued steel nails  
24 h x 12 w x 5 d cm





*Max Bainbridge's Cannikins - named after a term for a drinking vessel - reference the domestic, nodding to historical functional vessels through their form and size. Crafted to nestle within a person's hands, these small scale sculptural works have moved beyond the functional, though they embody reverence for their domestic origins.*

*This collection is produced from a single section of a Beech tree that came down near Max's studio. The cannikins were excavated from close to the heart of the tree, which had rotted, and in doing so bestowed the surrounding remaining wood with veins of beautiful spalting. The form of these vessels references the shape of the tree itself and the ringed cross sections from whence they came.*



Cannikins  
Spalted beech wood  
From 14.5 h to 28 h cm  
Sold individually





Ascension, Ash on Ash, 2022

Ash

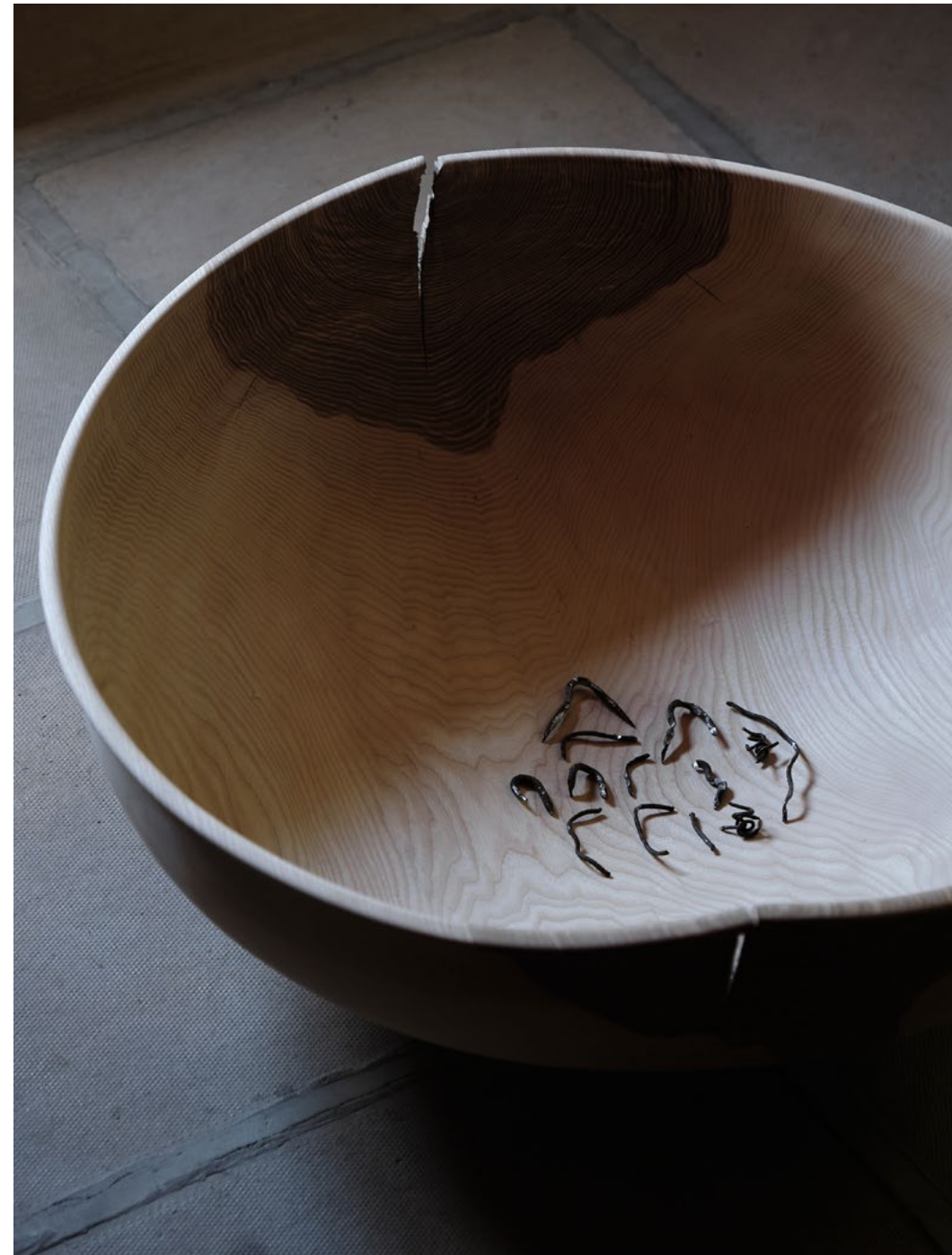
70 h x 140 d x 40 w cm







Offering Bowl I, 2022  
Olive ash  
24 h x 77 w cm  
sold individually



Offering Bowl II, 2022  
Olive ash, barbed wire  
25 h x 72 w cm



# Studio AMOS

*The New Craftsmen has been working with Annemarie & Tom of Studio AMOS for many years and have developed a varied and exclusive collection of lights and furniture which draws upon their exceptional skills and passion for locally-sourced natural materials. Each piece of the Studio AMOS collection is an example of specialisms honed over many years and collaborations between master craftspeople.*



## *Shim Ceiling Lights*







Shim Ceiling Light  
Stripped white willow with brass  
fittings and round pale linen flex  
26 h x 70 dia cm



# JOIN, ASSEMBLE, HOLD

*The Drawing Room*

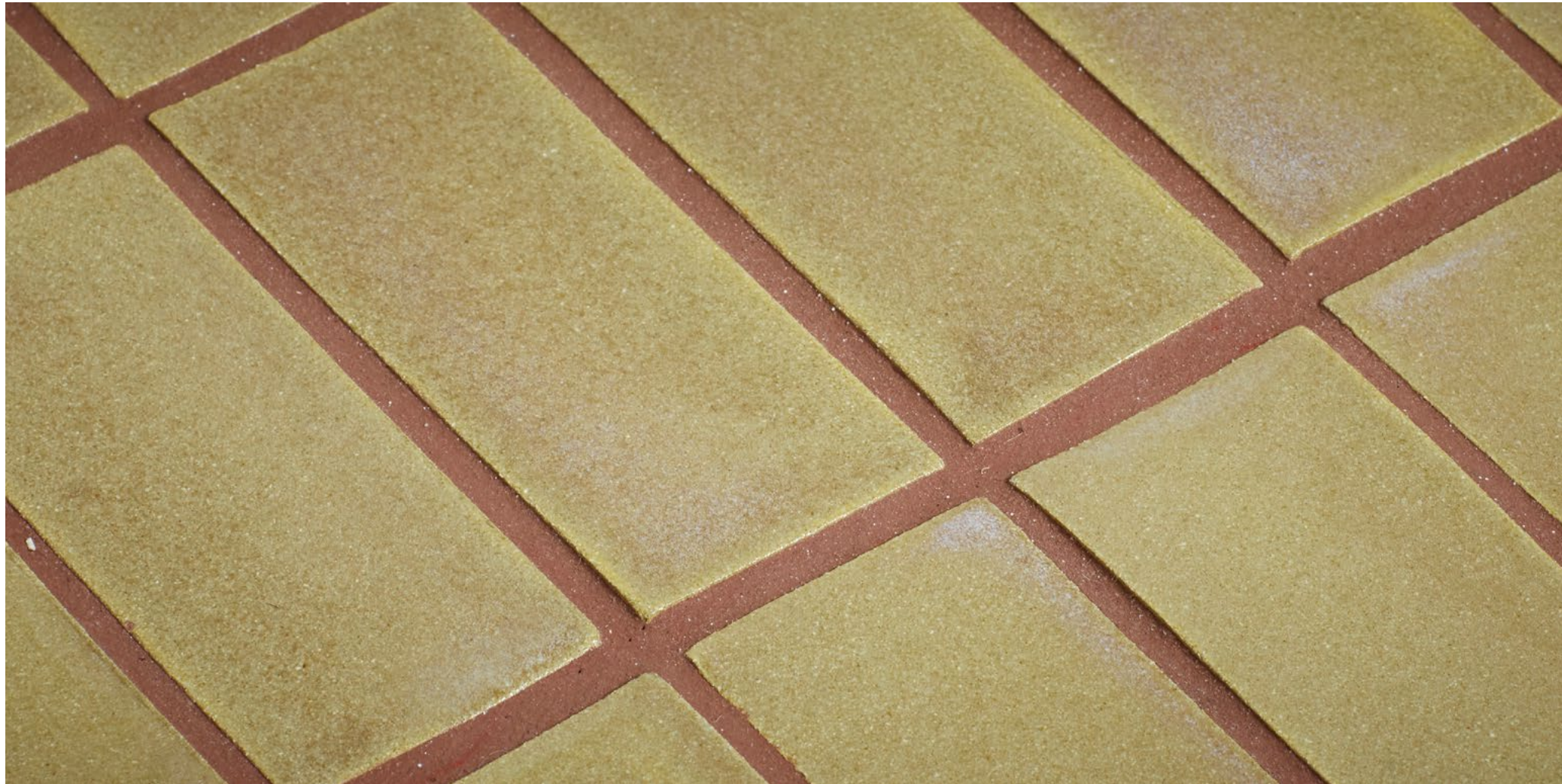
*In The Drawing Room are works that are assembled, plentiful in components and which spark interactivity and joy. The rich hues of Matthew Raw's Welcome Drinks Cabinet - a drawing room show-piece - are complemented by the iridescent glass objects of Jochen Holz, Lulu Harrison and Edmund Byrne. These innovative and unique pieces draw us into a world of the playful and sublime. The room will be illuminated by a new sculptural lighting collection also by Edmond.*





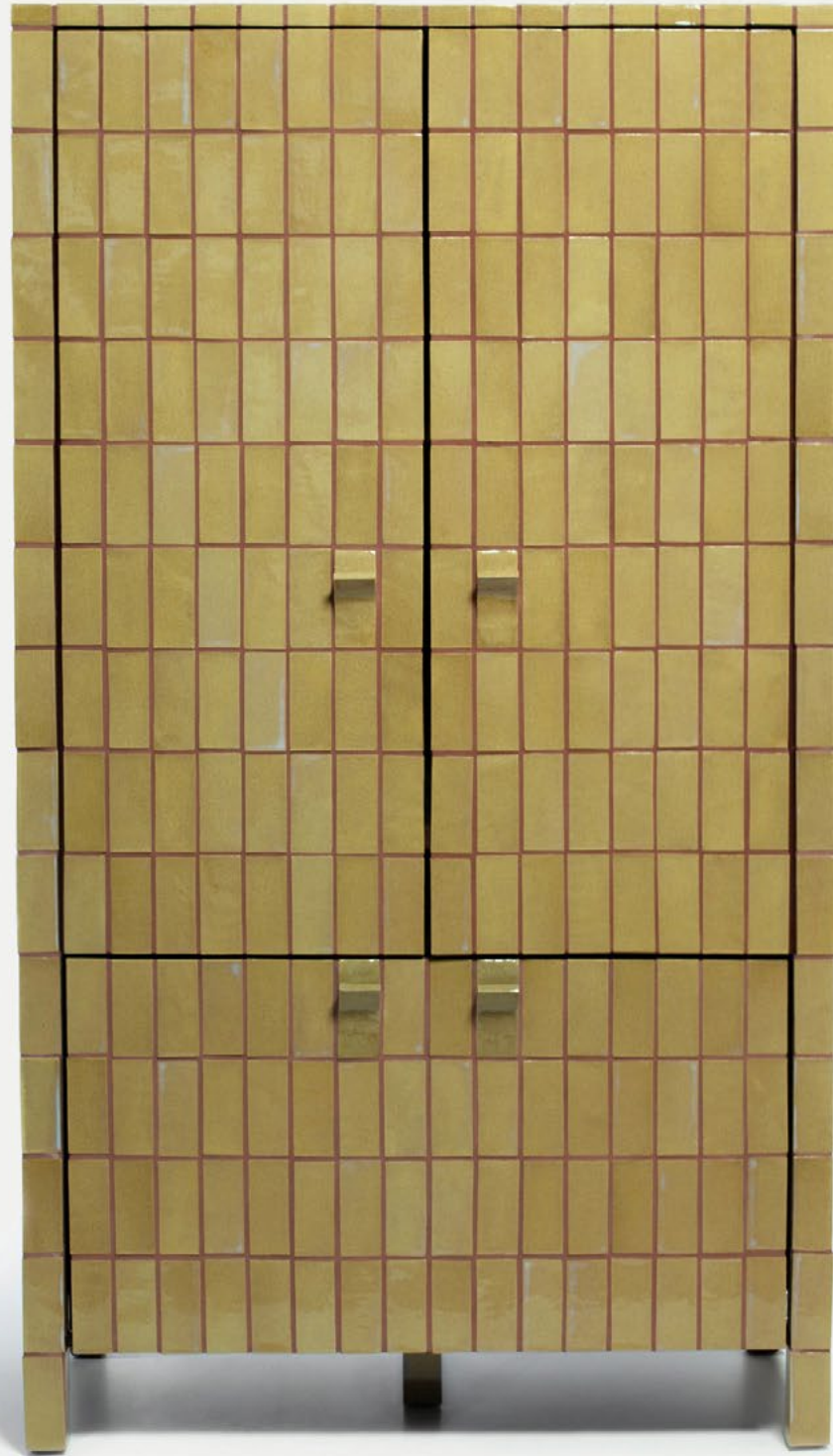
# Matthew Raw

*Matthew Raw created a spectacular addition to his Welcome Collection, further developing the series of hand-crafted tile clad furniture. The detail of the cabinet's design is a product of Matthew's love and commitment to the versatility of the tile, with each one individually hand-made and glazed by Matthew to cover and wrap around the surface and interior of the cabinet. Featuring bottle shelves, a large open drawer, glass hanging rails and a mirrored rear panel, this product is available in bespoke variations and can be customised to suit any space.*

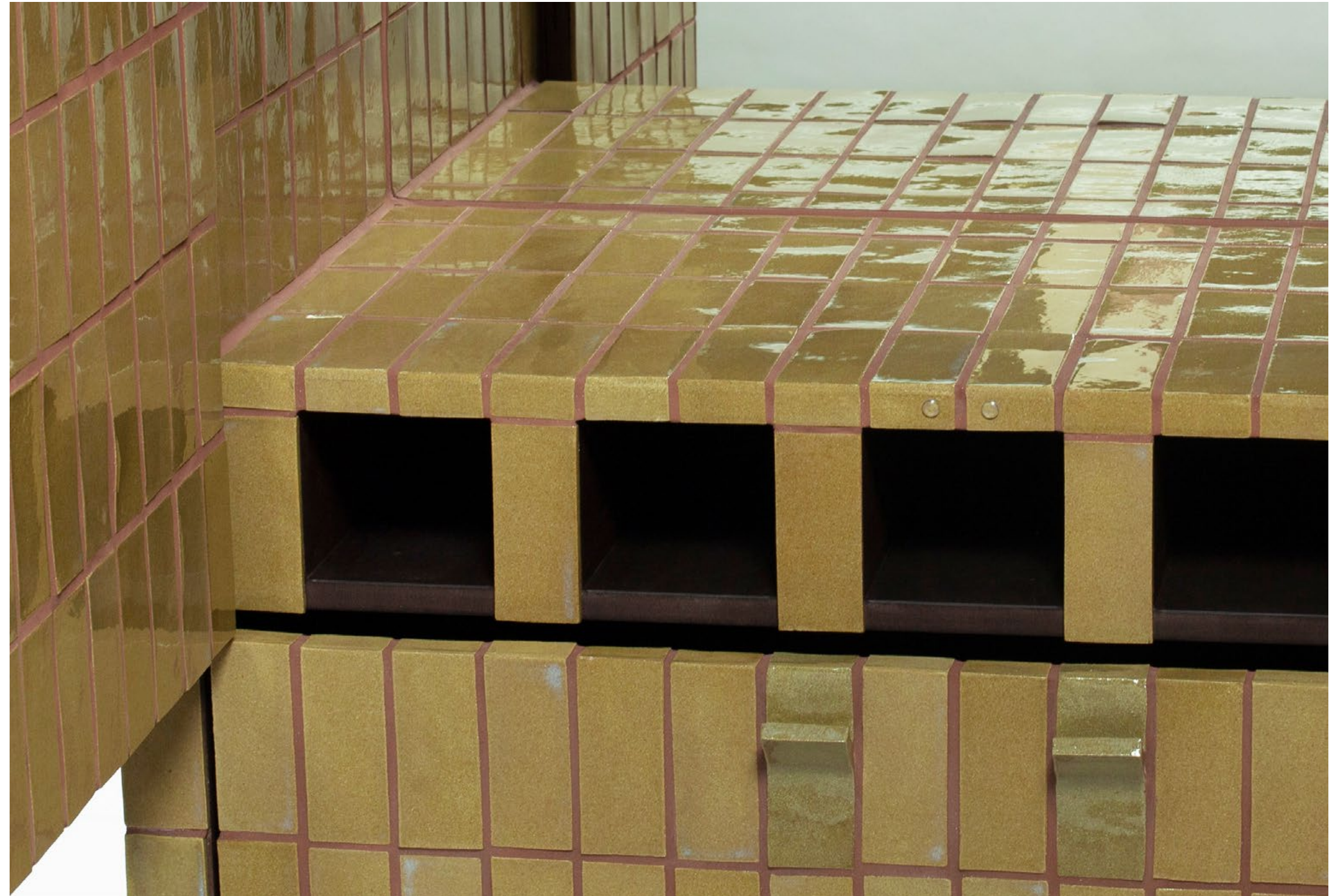


*The  
Welcome  
Drinks  
Cabinet*





The Welcome Drinks Cabinet  
Glazed earthenware with timber  
base and terracotta grout  
178 h x 99.5 w x 50 d cm





# Jochen Holz

*This new body of work from Jochen was inspired by the theme of our Drawing Room, a celebratory place which sparks interactivity and joy. The iridescent glass 'drinking' objects of Jochen Holz are innovative and unique pieces which draw us into his world of the playful and sublime.*



## *Drinking Objects*





Left to right:  
Martini Glass I, Flutes I & II, Liquor Glass I,  
Cognac Glass I, Liquor Glass I, Flute III,  
Liquor Glass III, Flute IV, Martini Glass II, 2023  
Hand blown glass  
From 14.5 h to 28 h cm



Left to right:  
Liquor Glass IV, Flute V, Spirit Bottle,  
Wine Bottle, Beer Bottle, Flute VI,  
Stoppered Bottle, Cognac Glass II, Scrumpy Bottle  
Hand blown glass  
From 13 h to 36.5 h cm





# Lulu Harrison

*Lulu is a researcher, artist, and maker in sustainable material development, she creates glass artefacts inspired by primitive glass making and work with materials sourced from the River Thames, waste and local resources, with as little impact on the environment as possible. By combining crafts, design, and science, her work seeks to redefine the meaning of 'luxury.'*



## *Thames Glass Collection*





Left to right:  
Thames Glass Goblet, Wine Glass, Pearl Vase  
(large), Pearl Jug, Pearl Vase (medium)  
Hand blown  
Colour Source: Local sand  
From 16 h to 26 h cm



Thames Glass Carafe & tumbler set  
Mould blown  
Colour Source: Mussel shells  
Tumblers from 7 - 9.5 h cm  
Carafe from 24.5 to 25 h cm



# Edmund Byrne

*Edmond Byrne creates each mould using materials like clay, fabric and plaster that introduce unpredictable, unique elements to each piece. Edmond's approach to craft is experimental. The themes of assembly, stacking and play run consistently throughout his practice.*



## *Metameric Glass*





Metameric Vessels

Left to right:

Small Cylinder I, Short Cylinder I, Small Cylinder II, Small Cylinder III, Short Cylinder II, Small Cylinder IV, Small Cylinder V

Glass with china clay finish

Short Cylinders 14.5 h 14 d to 15 h 14 d cm

Small Cylinders from 18.5 h 8 d to 30.5 h 8 d cm



*Metameric Table Lamp by Edmond Byrne continues to explore the Metameric phenomenon; when two individual colours appear indistinguishable to the human eye, their difference is revealed with a change in ambient light.*

*Composed by stacking 3 individual glass vessels, light passes through multiple layers of glass in this sculptural lamp, creating an ambient and ethereal light.*

Metameric Table Lamp  
Glass with china clay finish  
40 h 26 l x 26 w cm



JOIN,  
ASSEMBLE,  
HOLD *Vessels and baskets*

*Clusters of hand-wrought natural objects from Ash & Plumb, Darren Appiagyei, Alex Walshaw, Takahashi McGil, Studio AMOS and a suspended installation of regional baskets invite us to gather with them in their warmth and tactility, to have and to hold in our domestic lives.*





# Darren Appiagyei

*“My process is very much a collaboration with the material, it’s about allowing the wood to speak for itself rather than refining or polishing it into something that it may not be. When I turn on my lathe, using gouges and chisels carving into wood; the key is to honour the wood, it’s a patient process as I carve gradually as the innate qualities reveal themselves to me.”*

*- Darren Appiagyei*





Left to right:  
Banksia Vessel 4, Banksia Vessel 3,  
Banksia Vessel 9, Banksia Vessel 5  
Oak Burr  
from 12 - 14 h x 8 w cm  
sold individually



Pyrographic vessel 8  
Maple Wood  
8 h x 12 w cm

Pyrographic vessel 9  
Maple Wood  
12 h x 12 w cm

Pyrographic 7  
Chestnut wood  
42 h x 18 w cm





# Takahashi McGil

*Mark McGilvray and Kaori Takahashin, the makers behind Takahashi McGil, combine time-honoured Japanese traditions honed in Tokyo with western techniques. Together they plane, chisel, turn, wax and lacquer with great precision and attention to detail. Each considered piece celebrates the natural beauty of the material.*







Musubi I  
Vessel – Ash (finished with hard wax oil),  
Cordage – Rush, cotton  
15.7 h x 32 w cm

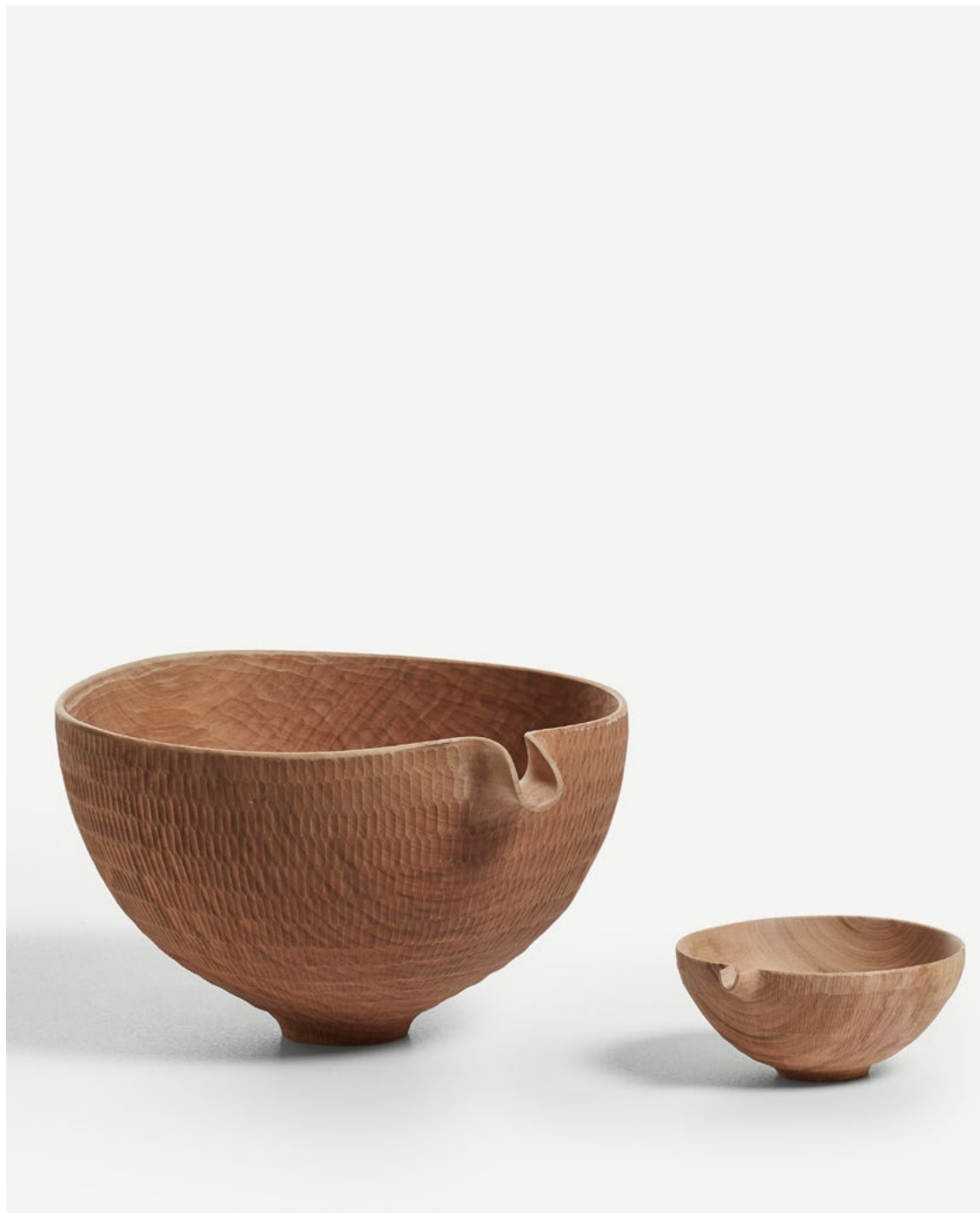


Musubi II  
Vessel – Ash (finished with hard wax oil),  
Cordage – Rush, cotton  
15.4 h x 21 w cm





Sen III  
Ash (finished with hard wax oil)  
29 h x 36 dia cm



Katakuchi I  
Cherry  
13.1 h x 22.2 w x 25.3 d cm

Katakuchi II  
Cherry  
50 h x 11 w cm







Utsuwa & Saji  
Horn beam  
Spoon – 2.5 w x 27.3 l cm  
Bowl – 12 h x 17.6 dia cm



Hachi  
Horn beam  
11.7 h x 15.7 dia cm



# Alex Walshaw

*Alex Walshaw creates furniture and functional objects from storm fallen and reclaimed wood, and wood grown through coppicing, an ancient and sustainable method of woodland management. Walshaw combines fresh green wood and relic oak in his furniture designs, forming hybrids of the modern and ancient. He shapes wood with simple hand tools which have long been used for carving, such as axes, knives and adze's.*







Elm, Hazel and Oak Stool  
Hand carved elm seat with scorched  
coppiced and riven hazel and oak legs  
46 h x 42 w x 58 d cm



Elm and Hazel Side Table  
Hand carved and flamed elm  
seat with scorched coppiced  
Hazel legs  
61 h x 30.5 w x 36 d cm



*Alex leaves traces of his woodworking practice on his works, enjoying the addition of his stories to those already present in the wood. Walshaw's practice is totally embedded within nature. His natural surroundings are the source of his materials, his inspiration, and also act as his workplace, throughout every season.*



Sycamore Bowl  
(small, medium and large)  
Sycamore  
S 6.5 h x 17.5 w x 12 d cm  
M 8 h x 21.5 w x 16 d cm  
L 10 h x 25.5 w x 19.5 d cm



Sycamore Pouring Bowls  
(small, medium and large)  
Sycamore  
S 6 h x 11.5 w x 9.5 d cm  
M 5 h x 12.5 w x 10 w cm  
L 6 h x 19 w x 13 d cm



Handled Lime Bowl (large) and  
Lime  
8 h x 39.5 w x 17 d cm

Handled Sycamore Bowl (small)  
Sycamore  
8 h x 22.5 w x 12 d cm



Apple Wood Bowl (left)  
Apple  
10 h x 17.5 w x 15 d cm

Coppiced Lime Bowl (right)  
Lime  
6 h x 16 w x 12.5 d cm





Pole Lathe Turned bowl  
& Sycamore Plate  
Sycamore  
Bowl 4.5 h 9.5 w 9.5 d cm  
plate 2 h x 18.5 l x 17 w cm





# Endangered Basketry

*Clare Revera  
Rachel Frost  
Michelle Mateo*

*Dominic Parrette  
Hilary Burns  
Nick McMillen*

*Joe Hogan  
Lorna Singleton  
Tim Johnson*

*The installation draws attention to and celebrates rare and endangered basketry techniques, offering insight into heritage skills unique to the British Isles, revived for the contemporary world. Many of the baskets displayed rely on British woods which have been driven to the edge of extinction in the UK. The display highlights the loss as cultural, as well as environmental, through the inclusion of these endangered materials, though the makers use only foraged, storm-felled or sustainable varieties.*









Clare Revera  
Large White Willow Oval Cyntell  
White willow  
27 h x 93 l x 66 w cm



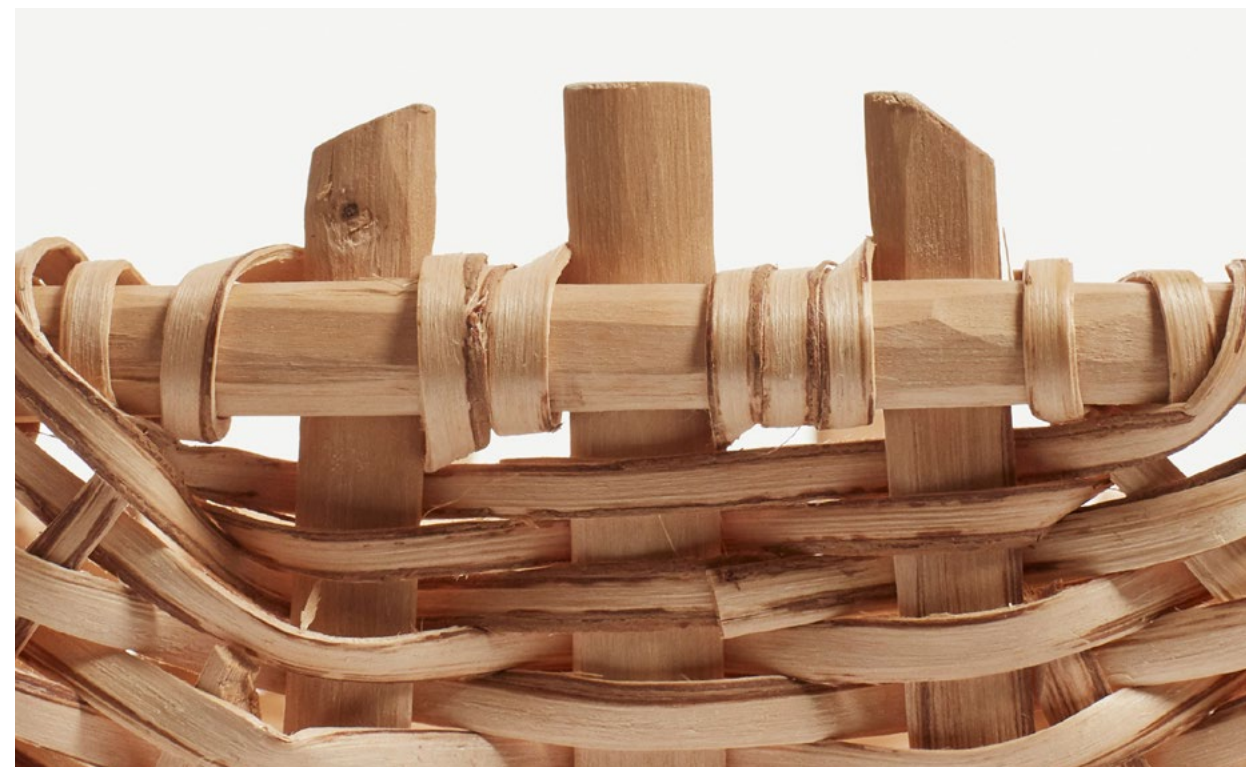
Clare Revera  
Penclawdd Cockle Selling Basket  
Split hazel  
40 h x 28 l x 15 w cm



Dominic Parette  
No5 oval Trug with strapped base  
Sweet chestnut, white willow  
24 h x 47 l x 28 w cm



Clare Revera  
Hazel Whisket  
Split hazel  
26 h x 24 l x 9 w cm



Dominic Parette  
Artichoke Basket  
Split willow  
30 h x 46.5 l x 34 w cm







Rachel Frost  
Heather Cassie  
Heather coir string  
36 h x 40 l x 40 h cm (without handle)



Rachel Frost  
Rush shoulder bag  
Common field rush, willow, coir string, linen  
string, antique linen lining, linen rope  
51 h x 31 l x 21 w cm (not including handle)





Tim Johnson  
The Caithness Hayve  
Soft Rush,  
Spanish hemp rope handle  
15 h 40 l 34 w (not including handle)





Lorna Singleton  
Laal Yak  
Boiled and riven oak woven basket,  
with oak bark tanned leather lid and strap.  
19 h x 24 l x 16 w cm(not including handle)



Lorna Singleton  
16" oak spelk basket  
Coppiced oak, hazel  
34 h x 44 l x 32 w cm (not including handle)





Michelle Mateo,  
Swing top handle  
Hand pounded ash, with steam bent ash handle  
20.3cm diameter x 17cm height (without handle)

Michelle Mateo,  
Belly basket  
Hand pounded ash  
51cm diameter x 30.5 height cm





Nick McMillen  
Chestnut Bark Frame Basket  
Ash timber hoops,  
ribs and weaving sweet chestnut bark  
20 h x 23 l x 21.5 w cm (not including handle)



Nick McMillen  
Western Red Cedar Bark Basket  
Inner bark of cedar (*Thuja plicata*),  
iron vinegar  
21 h x 29 l x 30 w cm







Joe Hogan  
Pouch on Weathered  
Gorse Wood  
Gorse wood, willow varieties  
70 h x 100 l x 93 w cm



Joe Hogan  
Skib  
Willow varieties  
5 h x 68.5 d cm



Hilary Burns  
Small Scuttle Basket  
Cleft chestnut, white and brown  
willow, handmade willow bast cord.  
21 h x 54 l x 49 w cm



Hilary Burns  
Large Scuttle Basket  
Cleft chestnut, white and brown  
willow, handmade elm bast cord.  
10 h x 34.5 l x 34.5 w cm



Hilary Burns  
Scuttle-work Garden Basket  
Cleft chestnut, white willow  
35 h x 45 l x 38 w cm





# THE NEW CRAFTSMEN

