



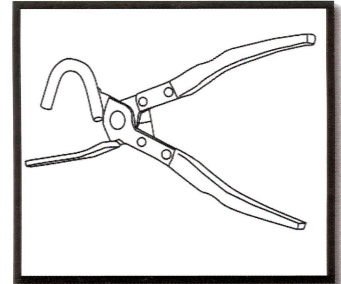
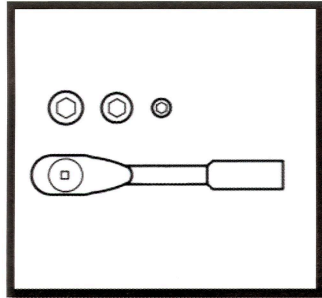
INSTALLATION INSTRUCTIONS
PART #: 00VP-88-CX30-TH
2020+ CX30 ACCESSORY HITCH

PARTS LIST

#1	2	Wire Handle Plate	#2	2	Flat Handle Plate
#3	4	M10*1.5Threaded Stud	#4	4	M10 Flange Nuts
#5	1	1/2 Pin & Pin lock	#6	1	1 1/4 Receiver Cover
	1	Hitch			E/F Installation Instructions

PROCEDURE:

1. THIS INSTALLATION REQUIRES TWO PEOPLE.
2. REMOVE CONTENTS FROM THE BOX AND VERIFY ALL PARTS ARE PRESENT. READ INSTRUCTIONS CAREFULLY BEFORE STARTING INSTALLATION.
3. PREPARE THE FOLLOWING TOOLS:
 - SAFETY GLASSES
 - 17MM AND WRENCH/SOCKET
 - MUFFLER GROMMET REMOVAL TOOL

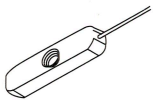
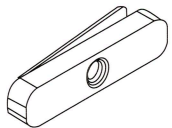
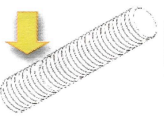
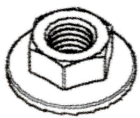
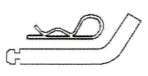
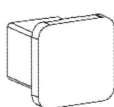


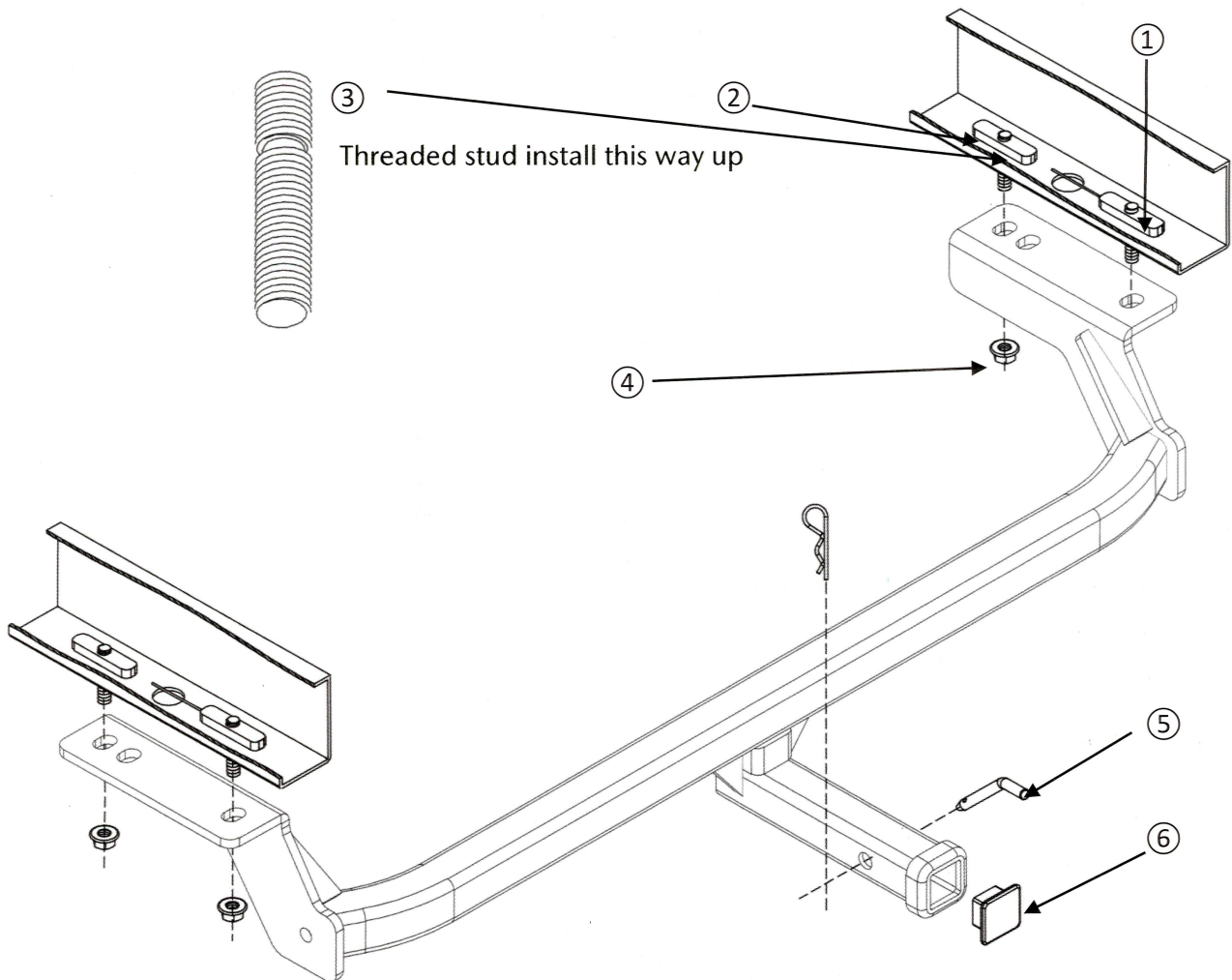
READ AND FOLLOW ALL WARNINGS AND INSTALLATION INSTRUCTIONS BEFORE BEGINNING THE INSTALLATION. WEAR SAFETY GLASSES AND USE ALL SAFETY PRECAUTIONS DURING THE INSTALLATION.

THIS VEHICLE DOES NOT HAVE A TOWING CAPACITY THEREFORE THIS ACCESSORY HITCH IS NOT DESIGNED OR INTENDED TO BE USED FOR TOWING

MAXIMUM CARRYING WEIGHT IS 200 LBS OR 90 KGS

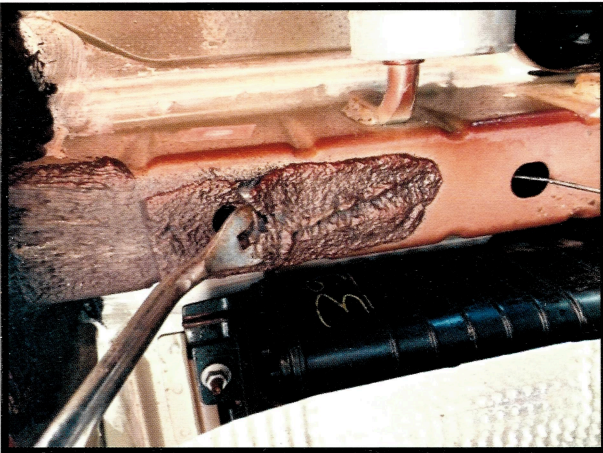
HARDWARE LIST

#	Picture	QTY	Desc	Tool Size	#	Picture	QTY	Desc	Tool Size
#1		2	Wire handle plate		#2		2	Flat handle plate	
#3		4	M10*1.5 Threaded Stud		#4		4	M10 flange nuts	
#5		1	1/2 Pin & Pin lock		#6		1	1 1/4 Receiver Cover	

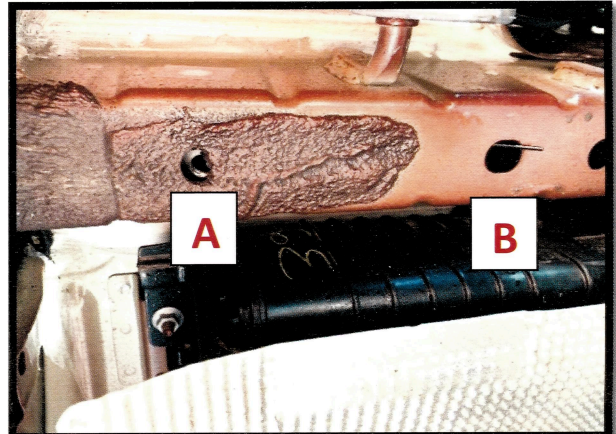




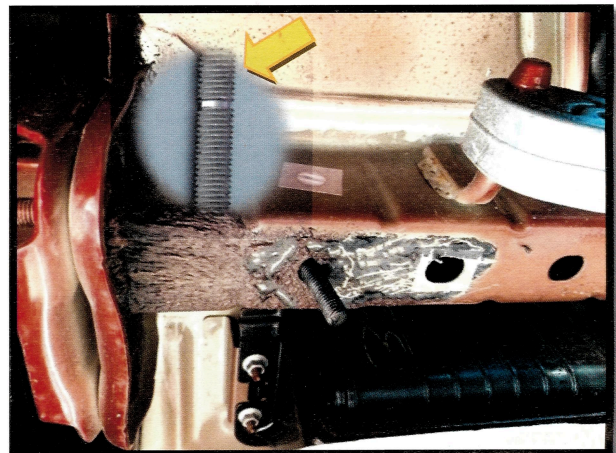
1) Use a grommet removal tool to remove the rubber muffler grommets on driver and passenger side.



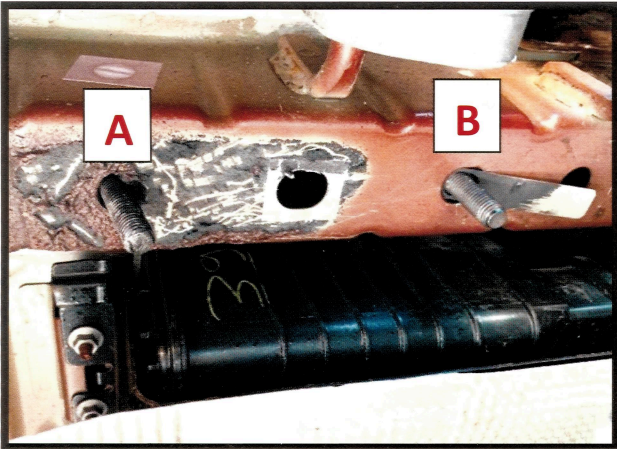
3) Clean up the mounting surface if needed being careful not to scratch painted surface



2) Insert #1 wire handle plate from B hole to A hole on both sides. Passenger side shown.



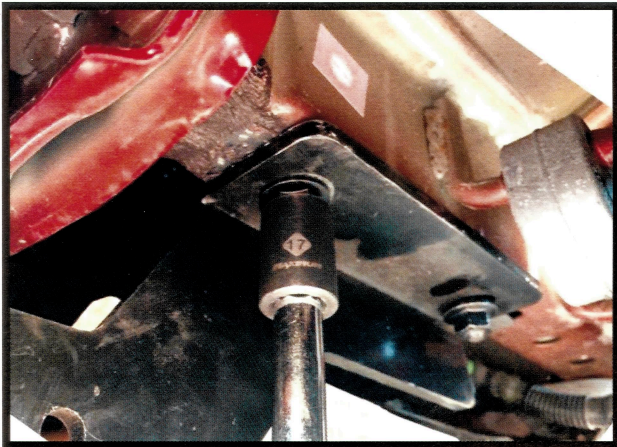
4) Hand tighten the #3 M10 threaded stud into the plate oriented up as shown.



5) Insert the #2 flat handle plate in hole B, leave flat handle outside then hand tighten the #3 M10 thread stud into the plate.



6) Hand tighten all the #4 M10 flange nuts to the #3 M10 thread tube. (do not fully tighten in this time).



7) Confirm the hitch is in the right position then use a 17mm socket to final tighten all 4 nuts to 40 ft/lbs



8) Re-install the rubber muffler hanger grommets. Installation complete.