





For Spring Summer 2024, we are excited to reveal our Quiet Luxury Collection – built from the impact that subtle uniqueness has on formal accessorising and personal style.

Quiet Luxury has become quite the buzz phrase in the design world, seen across fashion, interiors and beyond in the past few years. This notion is something that truly resonates with the Elizabeth Parker brand and the storytelling behind our designs. We like to think of ourselves as the champions of subtle (quiet) masculinity in a world of bold and brazen metals, we counteract these with thoughtfully subtle detailing that will enhance and elevate sharp tailoring and classic colour palettes.

Quiet Luxury by Elizabeth Parker, brings together subtle tones and details that whisper class and sophistication to form *high end staples for celebration, work and play.*

Q U I E T
Luxury

Stealth Wealth



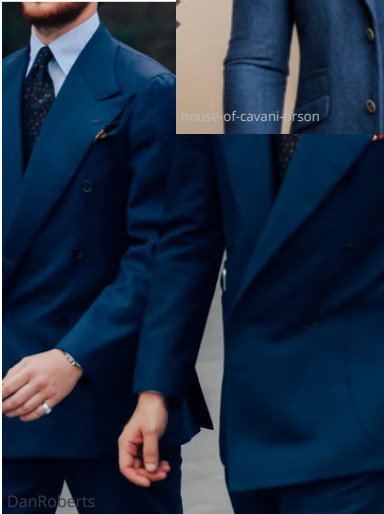
AEPL5341 (SS)



house-of-cavanaharson



Charles



DanRoberts



AEPCB396 (A)



quiet luxury
quiet luxury
quiet

QUIET LUXURY
STEALTH WEALTH

—
*Money talks,
wealth whispers*

Dorinda Medley



DanRoberts



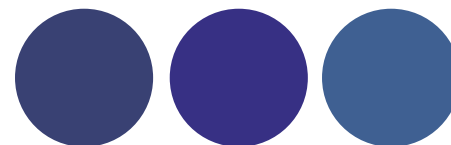
AEPCL1378(D)



AEPCL1377 (E)

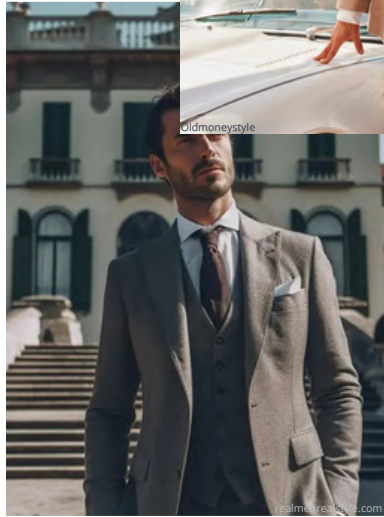
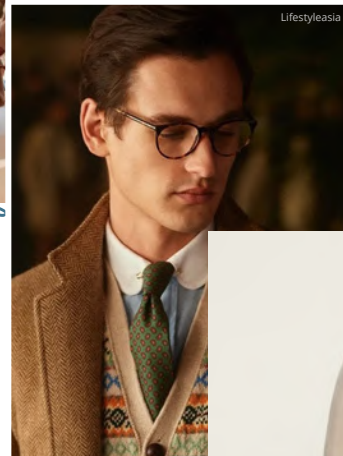


AEPCL2622 (D)



L-R: AEPCL1326 (E), AEPCL1377 (E) & AEPCL1465 (E)

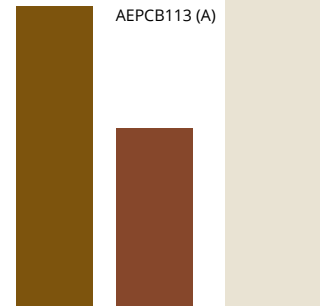
Old Money Aesthetic



AEPL2852 (D)



AEPCB113 (A)



quiet luxury
quiet luxury
quiet

QUIET LUXURY
OLD MONEY AESTHETIC

*I work hard so I
can play harder*

Dean Winters



menswearstyle



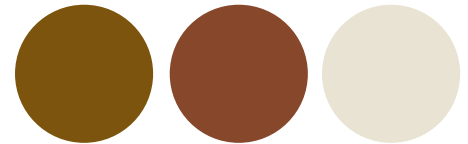
AEPCB036 (D)



AEPL1466 (E)

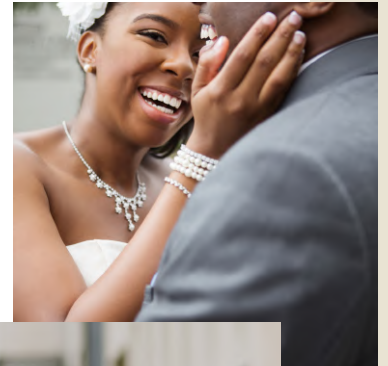


AEPL1056 (D)



L - R: AEPL2030 (D) AEPL2080 (D) AEPL2100 (D)

Quiet Accompaniment



AEPL2902 (E)

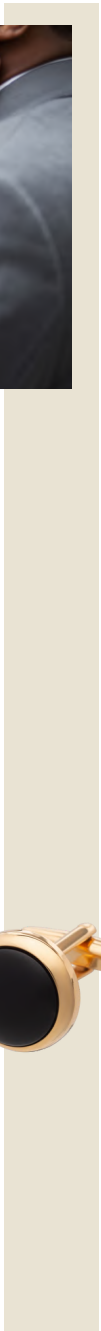


HBO

quiet luxury
quiet luxury
quiet



AEPL2903 (E)



QUIET LUXURY
QUIET ACCOMPANIMENT

*If you have it,
hide it*

Sidney Sheldon



AEPCL2862 (D)



AEPCL2620 (D)



AEPCL2742 (D)

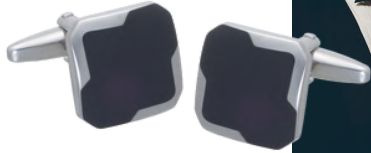


AEPCL1375 (E)

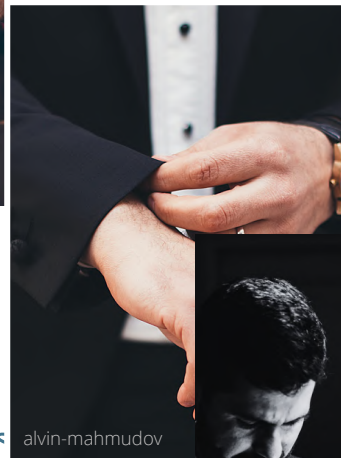
Subtle Success



emilypost



AEPCB455 (C)



alvin-mahmudov



jonathan-borba



AEPL1130 (D)

quiet luxury
quiet luxury
quiet

QUIET LUXURY

SUBTLE SUCCESS

*Success usually comes
to those who are too
busy to be looking for it.*

Henry David Thoreau



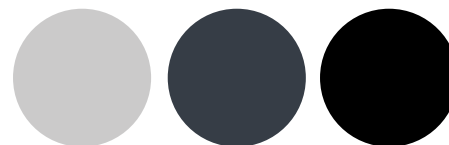
AEPCB132 (C)



AEPCB141 (C)



DS-2907SET (K)



DS-2906SET (K)