



Perfection is our Tradition™

## Farmhouse Kitchen Sink Installation Guide

### General Recommendations:

Please read installation and maintenance instructions thoroughly.  
Inspect your sink for any noticeable damage before installation.  
Check all local applicable plumbing and building codes.

These instructions are based on application to composite material or solid surface countertop installation only; countertop application to stone, marble, granite or butcher-block should be referred to an experienced countertop fabricator for custom installation.

Because Farmhouse sinks are individually handmade, we suggest using experienced and professional installers only. For custom cutting of countertop and installation of the actual sink, on-site installation is also recommended. Acceptable variances are approximately 1/8 of an inch. Alignment to the cut-out and precise application and trimming of any adhesive sealant are critical to a superior fit and finished look. Please take extra care in this regard.

Farmhouse sinks require custom order cabinets. Consult your cabinet dealer.

**We do not accept any liability for damage to countertop, sink fixture, faucets or personal injury during installation. Warranty is void if installation instructions are not followed.**

### Tools and Materials needed:

Tape Measure  
Hacksaw / Jigsaw  
Rags  
Pencil (NOT ink)

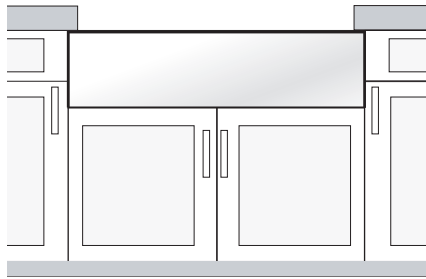
Framing Square  
Ear Protection  
Shims  
Denatured Alcohol

Eye Protection  
Silicone Adhesive Sealant  
Wood Braces

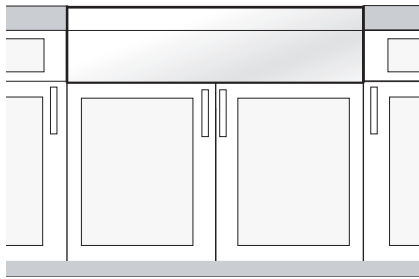
Be sure to use proper tools and always wear personal safety devices for your protection.

## Installation Options:

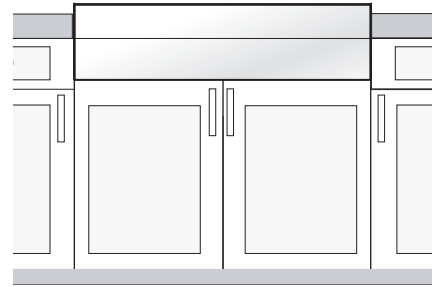
Farmhouse sinks offer installation options depending on your design.



Undermount Installation



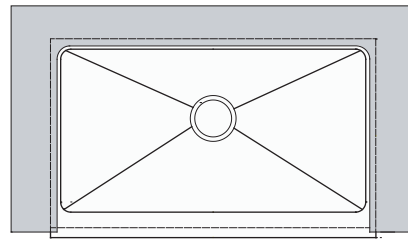
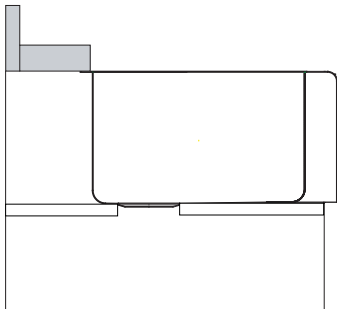
Flush mount Installation



Built-up Installation

**!** **Caution:** All installation types need to allow room for faucet installation. Ensure adequate clearance behind the sink for any faucet and backsplash, as well as full range of motion for faucet spouts and handles.

Typical undermount installation with 1/4" reveal recommended.



Typical flush mount and built-up installation

Built-up installation may expose sink sides to be raised up to 1" above the countertop.

## 1. Prepare the Sink Base Cabinet:

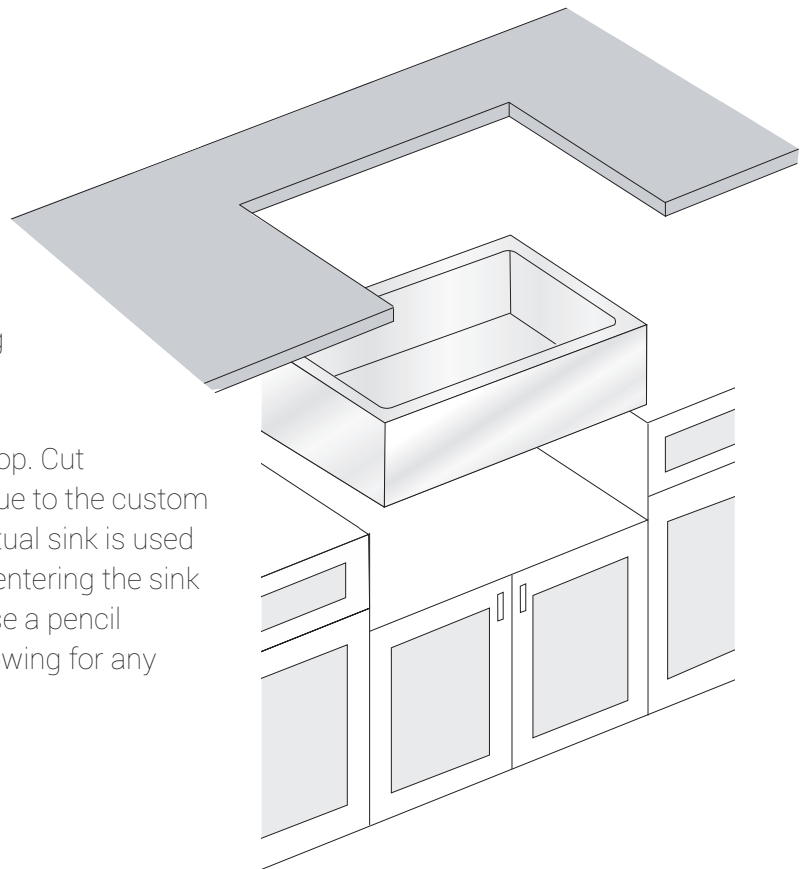
Farmhouse sinks offer installation options depending on your design.

Farmhouse sinks require custom order sink base cabinets with a front cutout to accommodate a 10" deep sink. Build a plywood platform on a support frame inside of the sink base cabinet. Platform must support the weight of the sink and any attachments such as garbage disposals. When the sink is placed onto a platform, make sure the top of the sink is evenly flush against the bottom of the countertop. Allow clearance for water supply line and drains or garbage disposal, as necessary.

## 2. Make a Template and Cutout

Depending on the installation option, make proper cutout of the countertop.

We recommend a 1/4" reveal on 3 sides when installed undermount style. For a flush mount or built up installation, cut countertop along with outside line of the sink profile. Front end of Farmhouse sinks are designed to be installed 3/4" extended out beyond the front end of the countertop. Cut countertop accordingly. No template is provided due to the custom nature of each application and installation. The actual sink is used as the template guide for each installation. After centering the sink and allowing for any faucets and backsplashes, use a pencil to outline the sink as your guide for the cutout, allowing for any reveal before the actual cutting.



## 3. Set the Sink

Set the sink on top of the cabinet or into the cabinet front cutout. Apply sealant if necessary as a gasket between the sink and cabinet.

## 4. Install the Countertop

Carefully clean bottom of countertop and top flange of sink with denatured alcohol. Apply bead of silicone adhesive (not supplied) around the top edge of the sink. Place countertop onto the sink. Remove excess sealant from the lip or any surfaces with a cleaner recommended by manufacturer of adhesive sealant.