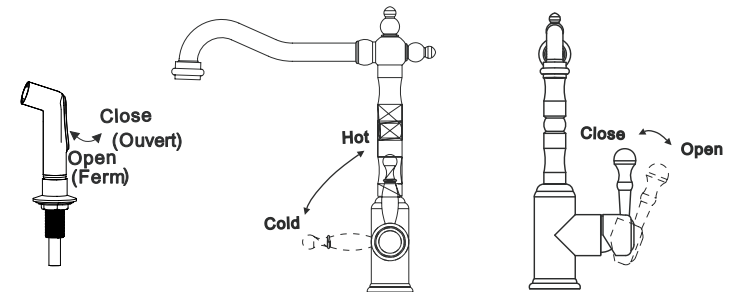


Kitchen Sink Faucet with Handle Sprayer (Single-Handle) Installation

1. Drill a hole \varnothing 1.3 1.38 and a \varnothing 1 hole, put the rubber gasket (2) on the bottom of the faucet body; Put the faucet body with all the hoses through the hole, then through the rubber gasket (3) and metal gasket (4), lock the nut (5), tight it with screw (7).
2. Put the spray through the small hole, put on the gasket (10), and lock the spray with the nut (11).
3. Connect the spray hose with the copper tube (6), finally connect the inlet hoses with supply tube, left (red) for hot water, and right (blue) for cold.
4. If you dont want to install the spray (9), please put the rubber gasket (12) into the stopper (13), then connect the stopper to the copper tube (6).



How to Use

1. Turn on the water supply valve, to check every joint if there is any leakage.
2. Pull the handle rightward in horizontal to turn on the faucet; leftward in horizontal to turn off.
3. Move the handle counterclockwise for cold to hot water
4. Press the bottom on the spray down to open it, release the button to close it.