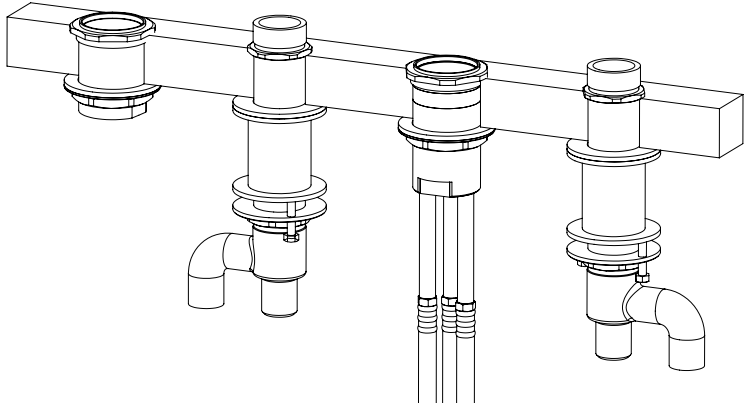


Valve for Deck-Mounted Bath Faucet with Handshower



TB2F

TABLE OF CONTENTS

Thanks for Choosing TOTO®!	2
Before Installation	2
Common Tools Needed	2
Included Parts	3
Warnings	3
Care & Cleaning	3
Installation Procedure	4
Warranty	5
Rough-In Dimensions	17
Spare Parts	18-19

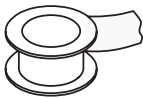
THANKS FOR CHOOSING TOTO!

The mission of TOTO® is to provide the world with healthy, hygienic and more comfortable lifestyles. We design every product with the balance of form and function as a guiding principle. Congratulations on your choice.

BEFORE INSTALLATION

- Observe all local plumbing codes.
- Make sure the water supply is shut off.
- Read these instructions carefully to ensure proper installation.
- This faucet is designed for deck-mounted application only.
 - Rough Deck Thickness.....1-1/4" (32mm) Max.
 - Finished Deck Thickness.....1/2" (12.7mm) Min. to 7/8" (22mm) Max.
- Provide an access panel to the valves and hose connections from the underside of the deck.
- TOTO® reserves the right to update the product design without notice.

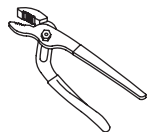
COMMON TOOLS NEEDED



Pipe Tape



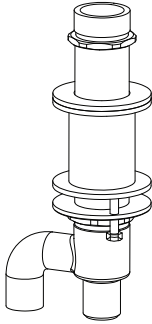
Adjustable Wrench



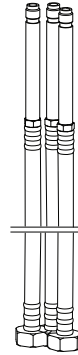
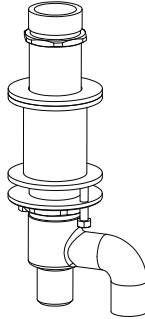
Adjustable Pliers

INCLUDED PARTS

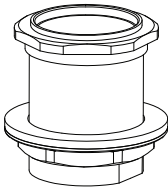
Check to make sure that all these parts were included in your packaging:



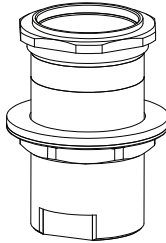
Valve Bodies (1 Hot, 1 Cold)



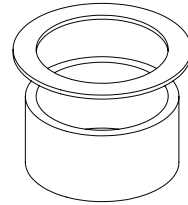
Hoses (3)
Hot, Cold & Handshower



Handshower Base Fitting



Spout Base Fitting



Thin Tub Installation Kit
(4 sets)

WARNINGS

For safe operation of the valve, please observe the following:

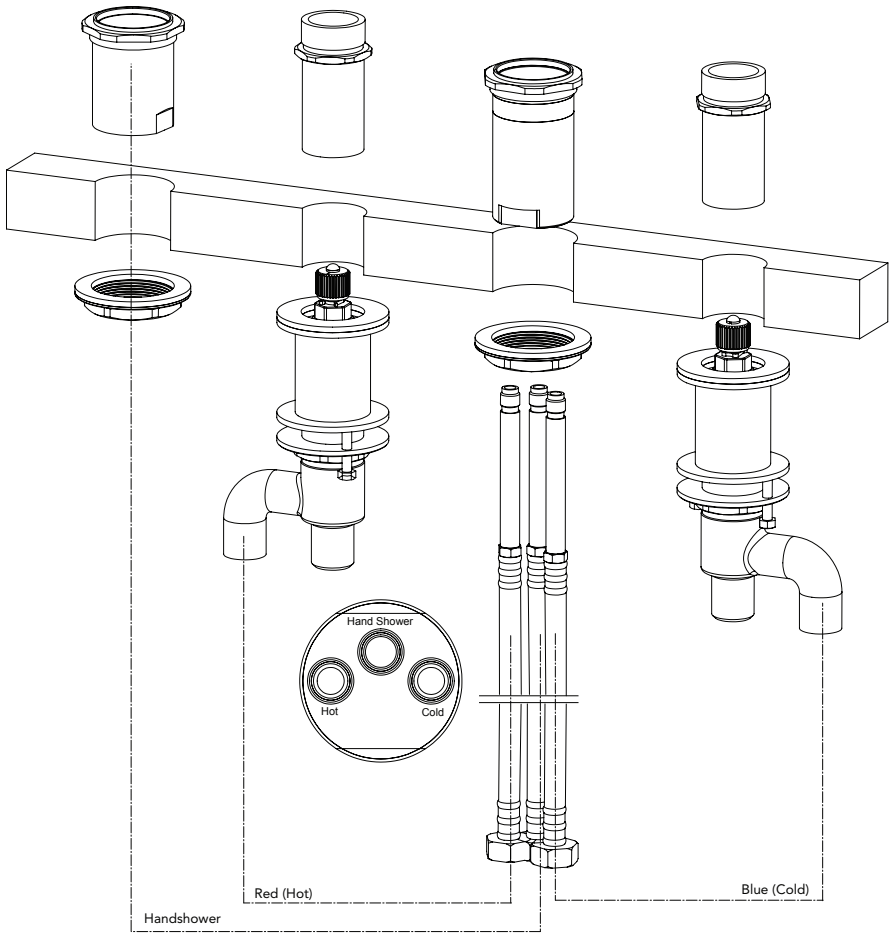
- Recommended Operating pressure:
 - Minimum Pressure.....20 psi (0.14 MPa), dynamic
 - Maximum Pressure.....80 psi (0.55 MPa), static
- The hot water supply pressure should not exceed 185°F (85°C).
- Do not use steam for the hot water supply.
- Do not use the product at an ambient temperature below 32°F (0°C).

CARE & CLEANING

Your new valve is designed for years of trouble-free performance. Keep it looking new by cleaning it periodically with mild soap, rinsing thoroughly with warm water and drying with a clean, soft cloth. Do not use abrasive cleaners, steel wool or harsh chemicals, as these will dull the finish. Failure to follow these instructions may void your warranty.

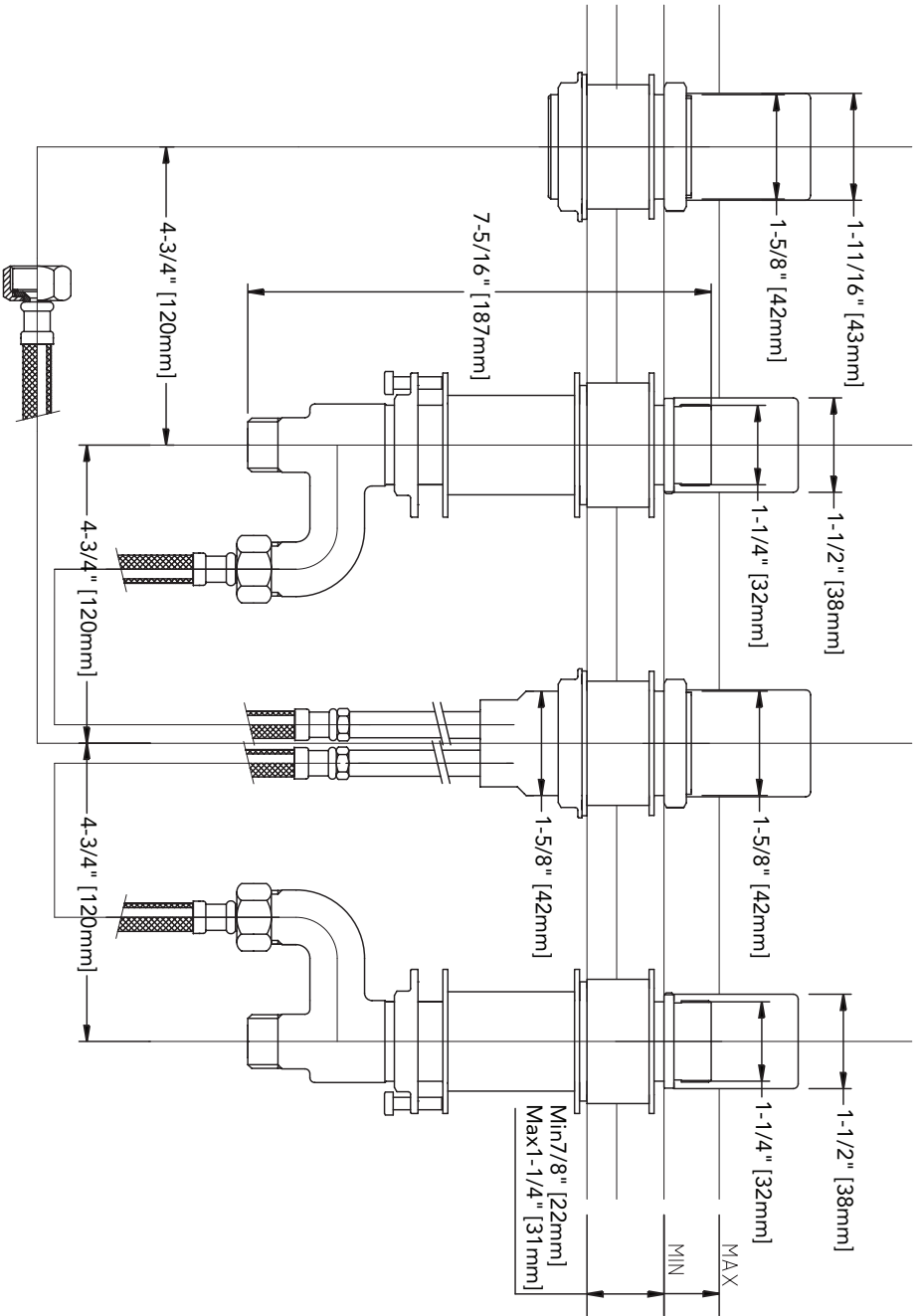
INSTALLATION PROCEDURE

Build Up Installation

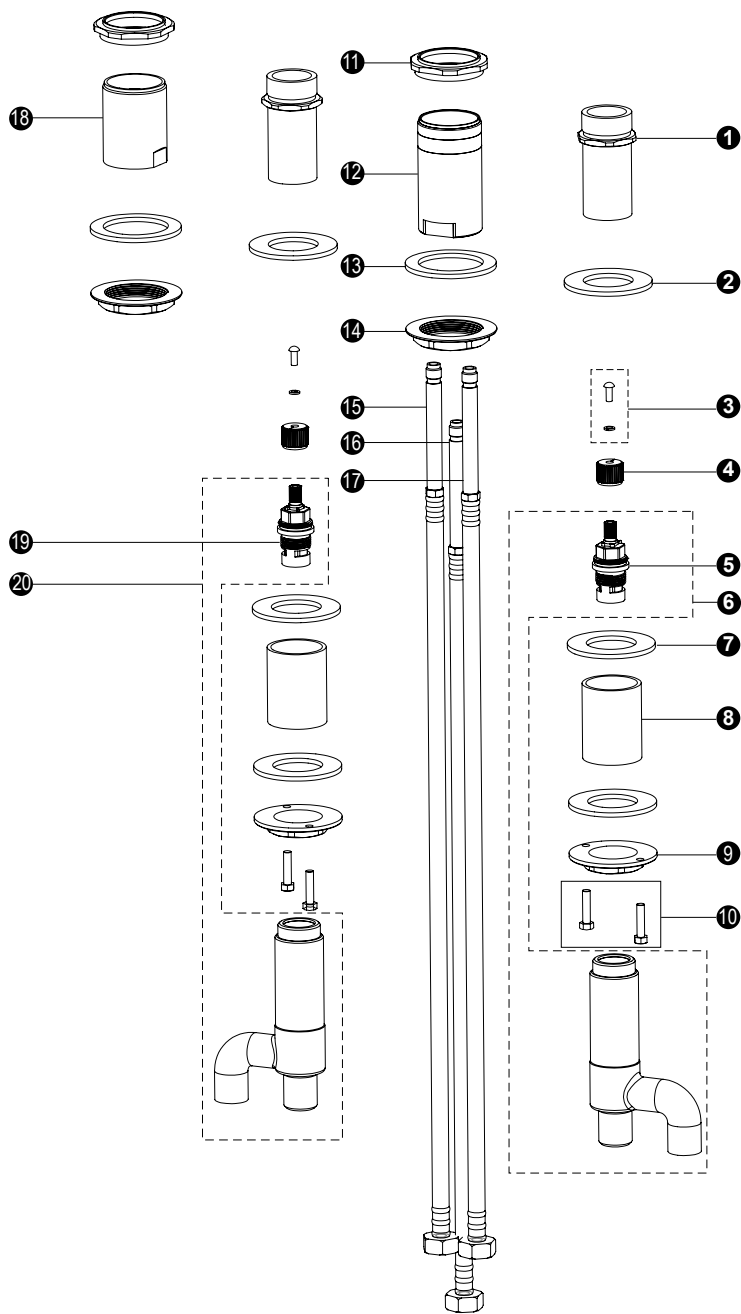


- 1) Remove the lock rings from the spout base assembly and handshower base assembly (TB2F).
- 2) Install the base fittings.

ROUGH-IN DIMENSIONS



SPARE PARTS



SPARE PARTS

No.	Description
1	Deck Adapter
2	Gasket Joint
3	Screw and Washer
4	Stem
5	Cartridge (Cold)
6	Valve (Cold)
7	Washer
8	Metal Tube
9	Nut
10	Tightening Screws
11	Adapter
12	Spout Adapter

No.	Description
13	Gasket Joint
14	Nut
15	Hose (Hot)
16	Hose (Handshower)
17	Hose (Cold)
18	Handshower Housing
19	Cartridge (Hot)
20	Valve (Hot)