

RADIANT HEAT | A COMFORTABLE ENVIRONMENT NO MATTER THE WEATHER OUTSIDE

MEET THE **SunStar** GLASS

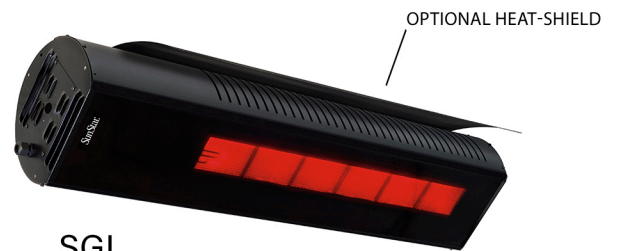
The SunStar *GLASS* infrared gas heater is a two-stage heater, with featured tinted *high-temperature glass*, which provides protection on windy days and enhances the aesthetic appeal of any design.



FEATURED MODEL: MGL - 316 MARINE GRADE STAINLESS



FEATURED MODEL: SGL - 3MIL BLACK POWDER COAT



SGL



MGL



WIND RESISTANT UP TO 40MPH



RAIN RESISTANT



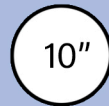
SNOW RESISTANT



UP TO 60-DEG. HORIZONTAL MOUNTING



24,000 OR 35,000 BTU (2-STAGE)



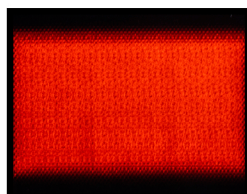
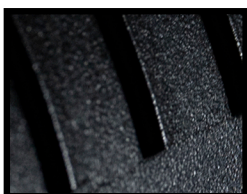
REDUCED CLEARANCES UP TO 10" *

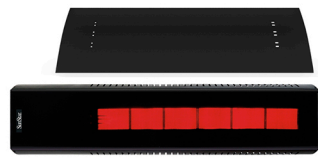
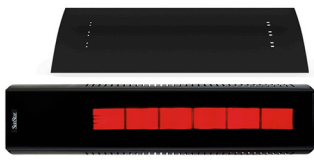


WIRELESS REMOTE OPERATION *



CSA DESIGN CERTIFIED - Z83.19 & Z83.26





N7SGL0*
L7SGL0*



N10SGL0*
L10SGL0*



N7MGL0*
L7MGL0*



N10MGL0*
L10MGL0*



N7SGL1560
L7SGL1560



N10SGL1560*
L10SGL1560*



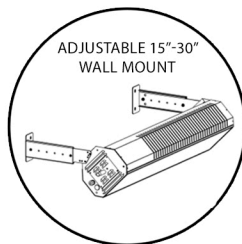
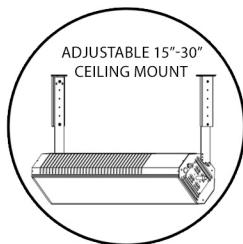
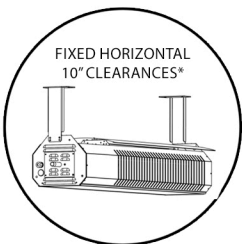
N7MGL1560
L7MGL1560



N10MGL1560*
L10MGL1560*

MODEL	GAS TYPE	BTUS 2-STAGE	MOUNTING HEIGHT	HEATER SPACING	MOUNTING ANGLE	HEATER DIMENSIONS	2-STAGE SWITCH INCLUDED	WIRELESS REMOTE OPERATION*	TIMER CONTROL	HEAT-SHIELD INCLUDED*
N7SGL0	NATURAL	24,000 LOW 35,000 HIGH	8-11 FT.	8-16 FT.	0-DEG.	48" X 11.5" X 9.5"	YES	NO	OPTIONAL	YES
L7SGL0	PROPANE	24,000 LOW 35,000 HIGH	8-11 FT.	8-16 FT.	0-DEG.	48" X 11.5" X 9.5"	YES	NO	OPTIONAL	YES
N10SGL0	NATURAL	24,000 LOW 35,000 HIGH	8-11 FT.	8-16 FT.	0-DEG.	48" X 11.5" X 9.5"	YES	YES	OPTIONAL	YES
L10SGL0	PROPANE	24,000 LOW 35,000 HIGH	8-11 FT.	8-16 FT.	0-DEG.	48" X 11.5" X 9.5"	YES	YES	OPTIONAL	YES
N7MGL0	NATURAL	24,000 LOW 35,000 HIGH	8-11 FT.	8-16 FT.	0-DEG.	48" X 11.5" X 9.5"	YES	NO	OPTIONAL	YES
L7MGL0	PROPANE	24,000 LOW 35,000 HIGH	8-11 FT.	8-16 FT.	0-DEG.	48" X 11.5" X 9.5"	YES	NO	OPTIONAL	YES
N10MGL0	NATURAL	24,000 LOW 35,000 HIGH	8-11 FT.	8-16 FT.	0-DEG.	48" X 11.5" X 9.5"	YES	YES	OPTIONAL	YES
L10MGL0	PROPANE	24,000 LOW 35,000 HIGH	8-11 FT.	8-16 FT.	0-DEG.	48" X 11.5" X 9.5"	YES	YES	OPTIONAL	YES
N7SGL1560	NATURAL	24,000 LOW 35,000 HIGH	7-9 FT.	6-14 FT.	15-60 DEG.	48" X 11.5" X 9.5"	YES	NO	OPTIONAL	NO
L7SGL1560	PROPANE	24,000 LOW 35,000 HIGH	7-9 FT.	6-14 FT.	15-60 DEG.	48" X 11.5" X 9.5"	YES	NO	OPTIONAL	NO
N10SGL1560	NATURAL	24,000 LOW 35,000 HIGH	7-9 FT.	6-14 FT.	15-60 DEG.	48" X 11.5" X 9.5"	YES	YES	OPTIONAL	NO
L10SGL1560	PROPANE	24,000 LOW 35,000 HIGH	7-9 FT.	6-14 FT.	15-60 DEG.	48" X 11.5" X 9.5"	YES	YES	OPTIONAL	NO
N7MGL1560	NATURAL	24,000 LOW 35,000 HIGH	7-9 FT.	6-14 FT.	15-60 DEG.	48" X 11.5" X 9.5"	YES	NO	OPTIONAL	NO
L7MGL1560	PROPANE	24,000 LOW 35,000 HIGH	7-9 FT.	6-14 FT.	15-60 DEG.	48" X 11.5" X 9.5"	YES	NO	OPTIONAL	NO
N10MGL1560	NATURAL	24,000 LOW 35,000 HIGH	7-9 FT.	6-14 FT.	15-60 DEG.	48" X 11.5" X 9.5"	YES	YES	OPTIONAL	NO
L10MGL1560	PROPANE	24,000 LOW 35,000 HIGH	7-9 FT.	6-14 FT.	15-60 DEG.	48" X 11.5" X 9.5"	YES	YES	OPTIONAL	NO

* HEAT-SHIELD REQUIRED TO MEET MINIMUM CLEARANCE OF 10"
* WIRELESS REMOTE OPERATION INCLUDED ON N10 & L10 MODELS ONLY



3MIL BLACK
POWDER COAT
ALL SGL MODELS

316 MARINE
GRADE STAINLESS
ALL MGL MODELS

MANUFACTURED BY:



DISTRIBUTED BY:



DEFINING THE OUTDOOR GRILLING
& COMFORT HEAT EXPERIENCE SINCE 1966

AEICORPORATION.COM 949-474-3070

