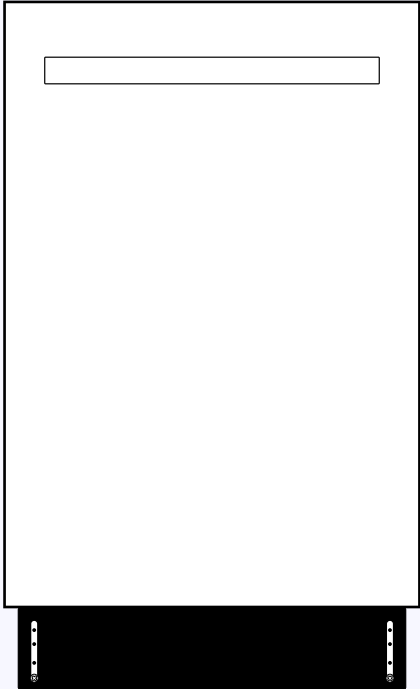


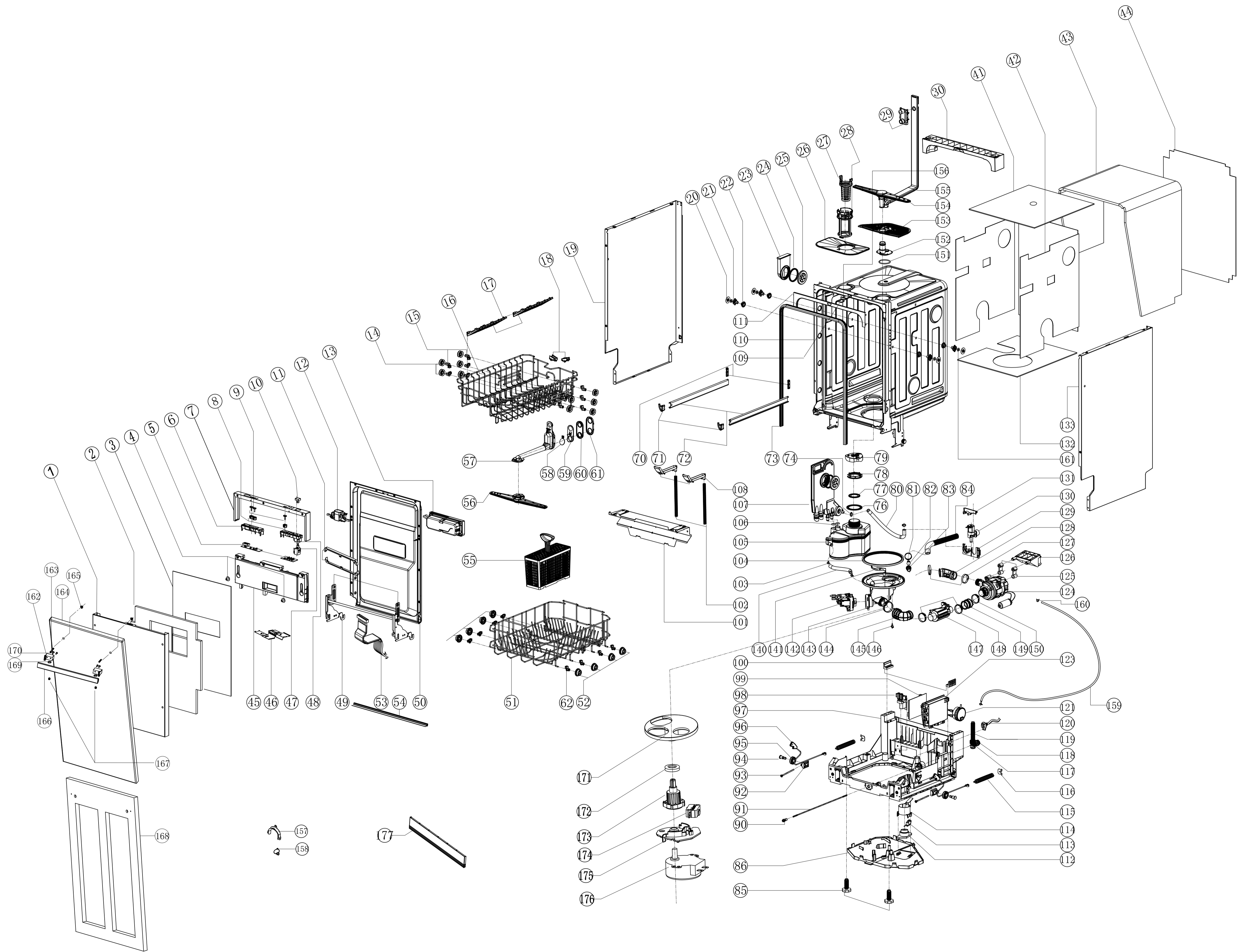
F18DWS250SS

250 Series 18 Inch Stainless Steel Dishwasher

FORTÉ

Parts List





F18DWS250SS Parts List

No.	Description of Spare Part	SKU	QTY
1	External Door	F90001529	1
2	Inner door deadening	F90001530	1
3	Inner door bitument	F90001531	1
4	T form Connector	F90001532	2
5	Display PCBA	F90001533	1
6	Control Board holder	F90001534	1
7	Panel stainless sheet	F90001535	1
8	Rubber Button	F90001536	1
9	Program button	F90001537	3
10	Power button	F90001538	1
11	Dispenser holder	F90001539	2
12	Door lock assembly	F90001540	1
13	Detergent dispenser	F90001541	1
14	Wheels of upper basket	F90001542	10
15	Basket wheel holder	F90001543	10
16	Upper basket	F90001544	1
17	Cup rack	F90001545	2
18	Basket rack regulator	F90001546	2
19	Left side panel	F90001547	1
20	Guide reinforce	F90001548	4
21	Guide holder	F90001549	4
22	Guide wheels	F90001550	4
23	Air inlet	F90001551	1
24	Seal for air breaker	F90001552	2
25	Air breaker nut	F90001553	2
26	Flat filter	F90001554	1
27	Extractable cup filter	F90001555	1
28	Nice filter	F90001556	1
29	Pipe casing	F90001557	1
30	Upper rear crosspiece	F90001558	1
41	Tub too bitument	F90001559	1
42	Tub band bitment	F90001560	1
43	Tub deadening	F90001561	1
44	Back panel	F90001562	1
45	Control panel	F90001563	1
46	Casing for wiring	F90001564	1
47	Power switch	F90001565	1
48	LED board holder	F90001566	1
49	Hinge assembly	F90001567	1
50	Inner door	F90001568	1
51	Lower basket	F90001569	1
52	Wheels of lower basket	F90001570	8
53	Wiring	F90001571	1
54	Lower seal of inner door	F90001572	1
55	Cutlery basket	F90001573	1
56	Upper sprayer assembly	F90001574	1
57	Upper sprayer pipe	F90001575	1
58	Matching seal	F90001576	1
59	Matching Piece	F90001577	1

60	Block for upper sprayer	F90001578	1
61	Upper sprayer pipe holder	F90001579	1
62	Basket wheel holder	F90001580	8
70	Basket guide rear block	F90001581	2
71	Basket guide front block	F90001582	2
72	Upper basket guide	F90001583	2
73	Tub gasket	F90001584	1
74	OTK175	F90001585	2
76	Seal for softener	F90001586	1
77	Gasket for softener cap	F90001587	1
78	Softener nut	F90001588	1
79	Softener outer cap	F90001589	1
80	Inlet hose for air breaker	F90001590	1
81	OTK286	F90001591	1
82	Block for draining pump	F90001592	1
83	Draining outlet	F90001593	1
84	draining hose	F90001594	1
85	Adjustable foot	F90001595	2
86	Plastic cover	F90001596	1
90	Driving pole cap	F90001597	1
91	Adjusting level	F90001598	1
92	Adjusting nut of door	F90001599	2
93	Adjusting bolt of door	F90001600	2
94	Hinge axis	F90001601	2
95	Hinge wheel	F90001602	2
96	Hinge line	F90001603	1
97	Plastic base	F90001604	1
98	Power filter	F90001605	1
99	Main PCBA	F90001606	1
100	Damping tray for inner tub	F90001607	2
101	Middle front crosspiece	F90001608	1
102	Overflow hose	F90001609	2
103	Clamp	F90001610	2
104	Sump seal	F90001611	1
105	Softener	F90001612	1
106	O-ring	F90001613	2
107	Air breaker	F90001614	1
108	Overflow launder	F90001615	1
109	Door lock hook	F90001616	1
110	Tub assembly	F90001617	1
111	Square	F90001618	1
112	Overflow float	F90001619	1
113	Overflow microswitch	F90001620	1
114	Overflow holder	F90001621	1
115	Door spring	F90001622	2
116	Spring stator	F90001623	2
117	Height gear	F90001624	1
118	Driving gear	F90001625	1
119	Adjustable foot	F90001626	1
120	Power cord	F90001627	1
121	Pressure switch	F90001628	1
123	PCB box	F90001629	1

124	Washing pump assembly	F90001630	1
125	Motor damping rubber	F90001631	2
126	Washing pump bracket	F90001632	1
127	OTK361	F90001633	2
128	Outlet rubber duct for washing pump	F90001634	1
129	Holder for water pipe	F90001635	1
130	Water inlet valve	F90001636	1
131	Pipe holder	F90001637	1
132	Tub bottom bitument	F90001638	1
133	Right side panel	F90001639	4
140	Outlet hose for softener	F90001640	1
141	sump deflector	F90001641	1
142	Draining pump	F90001642	1
143	Sump welded components	F90001643	1
144	OTK455	F90001644	1
145	Ruber tubbe for heater	F90001645	1
146	Temperature Sensor	F90001646	1
147	Heating	F90001647	1
148	OTK381	F90001648	2
149	Inlet rubber duct for washing pump	F90001649	1
150	OTK396	F90001650	1
151	Seal for watershed	F90001651	1
152	Watershed	F90001652	1
153	Filter support	F90001653	1
154	Lower sprayer assembly	F90001654	1
155	linner pipe	F90001655	1
156	clasp holder	F90001656	1
157	draining hose hanger	F90001657	1
158	salt funnel	F90001658	1
159	pressure hose	F90001659	1
160	clamp	F90001660	2
161	guide holder seal	F90001661	4
162	Left and right handle	F90001662	1
163	Fastening stud	F90001663	2
164	Decorative exterior door	F90001664	1
165	M5 hexagonal lock nut	F90001665	2
166	Outer door handle	F90001666	1
167	Hexagon Socket taper screw	F90001667	2
168	Outer Door supporting plank	F90001668	1
169	M6 Nut	F90001669	2
170	Handle Screw	F90001670	4
171	Alternative Dispensor Block	F90001671	1
172	Bearing rubber seal	F90001672	1
173	Spindle	F90001673	1
174	Microswitch	F90001674	1
175	Motor Holder	F90001675	1
176	Synchronous motor	F90001676	1
177	Baseboard	F90001677	1