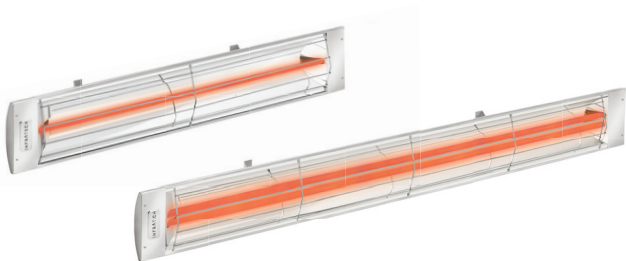
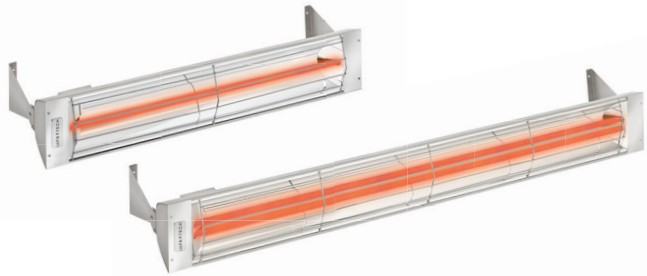


Heater Comparison:

C/CD-Series and W/WD-Series



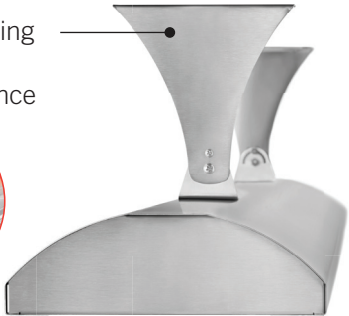
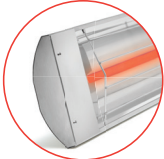
C/CD-Series



W/WD-Series

C-shaped body with 2.5" depth

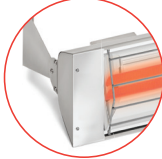
Two inset mounting brackets for a floating appearance



2.5"

W-shaped body with 3" depth

Two mounting brackets at each heater body end



3"

Ideal for wall or ceiling mount applications



Ideal for flush-mount applications



All heaters include:

304 stainless steel construction



Eight standard colors with unlimited custom color options

American made 3-year warranty