



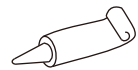
For easy installation of your faucet please do the following

- Thoroughly read all instruction before installing the faucet.
- Read and understand all warnings, care and maintenance information.

Cleaning and Care

Care should be exercised when cleaning this product. Although its finish is extremely durable, it can be damaged by harsh abrasives and cleaning pads. Please use few and non-abrasive cleaning solution to clean and care.

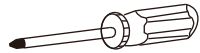
TOOLS YOU WILL NEED:



Plumber' s putty



Pipe tape



Philips screwdriver



Pliers



Adjustable wrench

PACKAGE CONTENTS

- 1- Tub Filler
- 1- Installation Accessories
- 1- Hand Shower and Shower Hose

FEATURES

- Elegant Brass Hand Shower
- Solid Brass Construction
- Ceramic Disc Cartridge

Installation Instruction

Freestanding Tub Filler Faucet Manual

Note: This Instructions Book Is Written For General Use
And Subject To Specification Variance Of Actual Parts

The product is cUPC certified.
Original certification model code:DF-05007



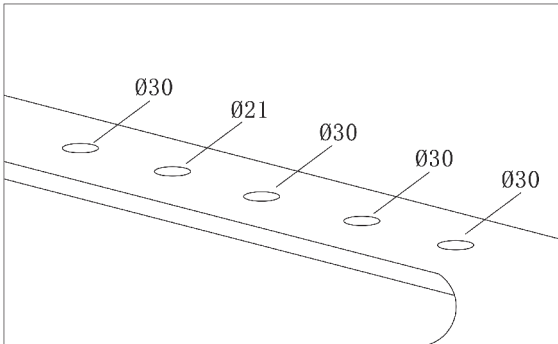
Faucet Installation Steps

1

Turn off the hot and cold water angel valve.

2

Drill the holes on finished desk per diagram.(Unit:MM)



3

Detach the accessories from the faucet.

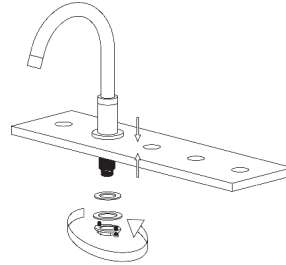
Faucet Installation Steps

4

Put the bathtub faucet onto the reserved holes of the bathtub and lock the washer and the nut.

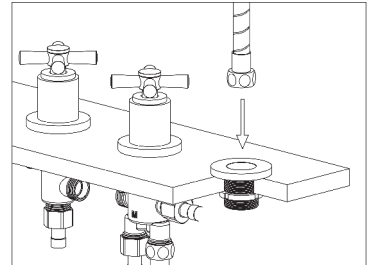
5

Detach the shower holder, put the shower holder onto the reserved hole and install with washer and screw nut.



6

Put the shower hose through the shower holder.



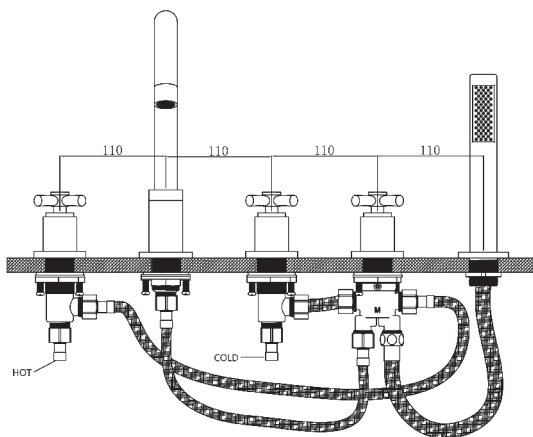
Faucet Installation Steps

7

Assemble and tighten the hand shower and the washer to the shower hose.

8

Connect the inlet pipes to the valves,
Hot G1/2 and Cold G1/2 refer to the pipes with red and blue,
Red pipes connect to Hot G1/2 and blue pipes connect to Cold G1/2.



9

When the faucet is completely installed, please remove the aerator from the spout. (Please ignore this step if the model is without the aerator.)

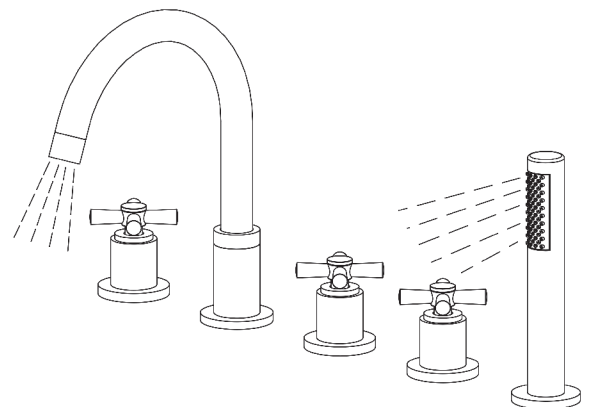
Faucet Installation Steps

10

Turn on the hot and cold angel valve.

11

Water Testing-Turn on the spout and hand shower.



12

Turn off the spout and hand shower, and re-install the aerator.(Please ignore the step of re-install, if the model is without the aerator.)