

**Actual Size:** 72" x 32" x 21" • (182.88cm x 81.28cm x 53.34cm)

**Shipping Size:** 83" x 36" x 31" • (210.82cm x 91.44cm x 78.74cm)

**Net Weight:** 205lbs • (92.99Kg)

**Shipping Weight:** 225lbs • (102.05Kg)

**Floor Dimensions:** 54" x 22" • (137.16cm x 55.88cm)

**Unoccupied Water Capacity:** 75gal • (283.92L)

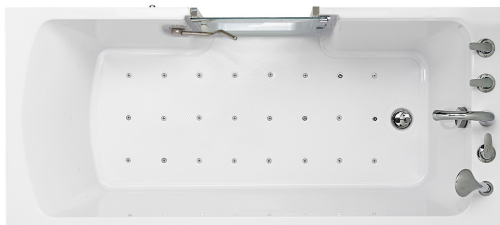
**Occupied Water Capacity:** 35-55gal • (132.49 - 208.2L)

## Included Features (Soaking)

1. Acrylic Tub Shell
  - Gloss white finish
  - Fiberglass gelcoat reinforced
2. Stainless steel frame with adjustable leveling Legs.
3. Unique tempered glass inward swing door with a brushed finish aluminum frame.
4. 2" Brass Drain with overflow.

## Jetting & Therapy Options

1. Air Massage
2. Hydro Massage
3. Microbubble Therapy
4. Soaking Option (No Jets)



Air Massage Package Option Shown

## Jetting & Therapy Systems

### Air Massage

- Air Massage Pump 3.6A
- 3 Speed Pump
- Auto-purge (Activates 20 minutes after pump shutdown)
- 24 jets
- On/Off push control

### Hydro Massage

- Hydro Massage Pump 5A
- Hydro Massage Intensity Dial Control
- In-line Water Heater 5.5A
- Ozone Sterilization
- 11 jets
- On/Off Push Control

### Microbubble Therapy

- Hydro Pressure Pump
- Pressure Tank
- On/Off push control

### Warranty

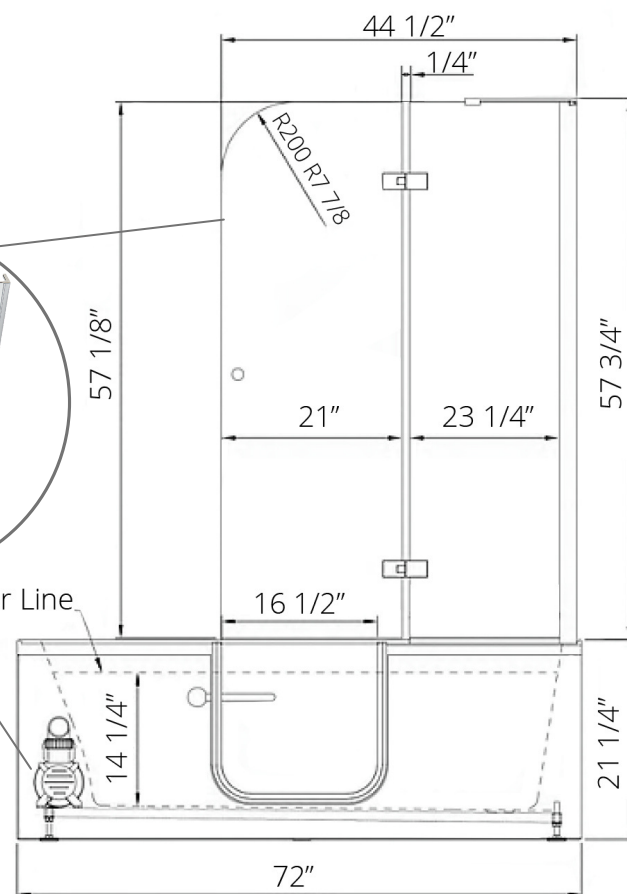
- Lifetime limited\* warranty on shell, frame, door, and parts to original purchaser/Address
- Non Ella brand faucets covered under manufacturers original warranty

### Optional Feature

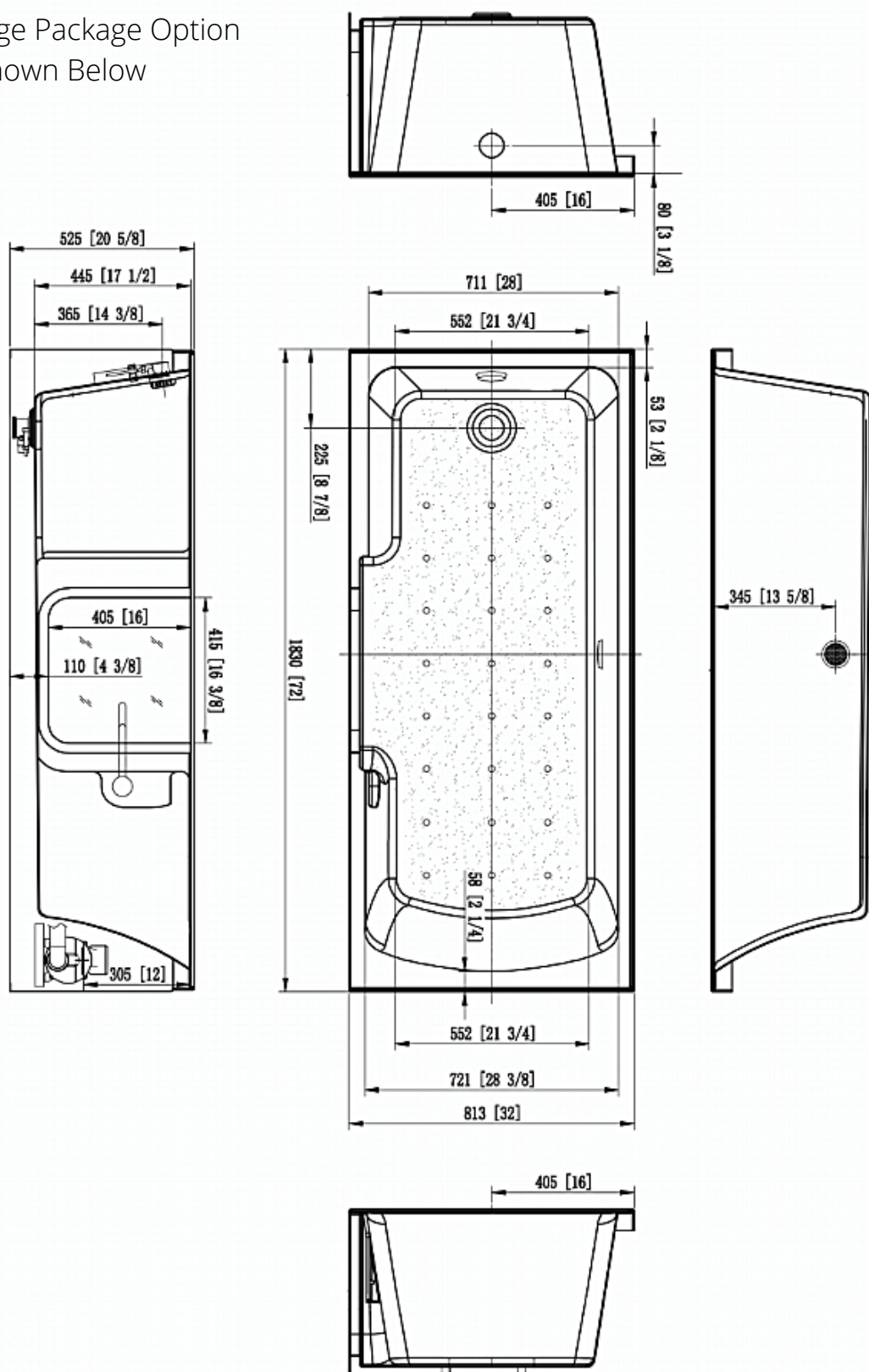
- Glass Shower Screen
- Size 41 1/2" x 37 3/4"



Water Line



Air Massage Package Option  
Shown Below





# Ella 5 Piece Single Lever Fast-Fill Faucet

## Description

Solid brass spout in a chrome finish with a 5-setting pull out hand shower mixer including a 5' braided hose. Two 3/4" 5' braided stainless-steel supply lines are included along with Cold/Hot levers with a diverter for the hand mixer.

## Flow

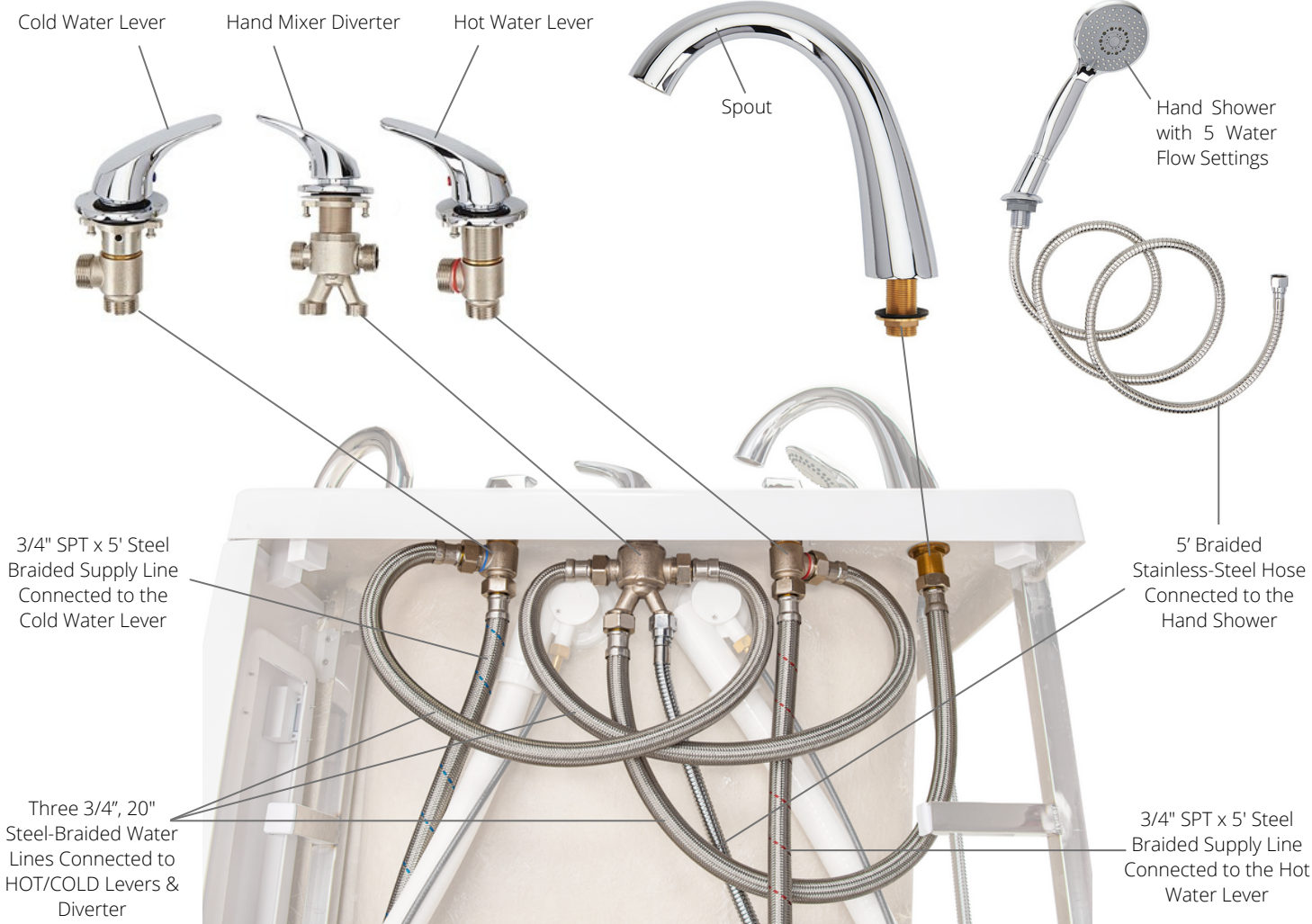
- Hand shower is limited to 1.9 GPM (7.5L/min)
- Faucet fill rate designed for 18 GPM (68.1L/min)

## Cartridge

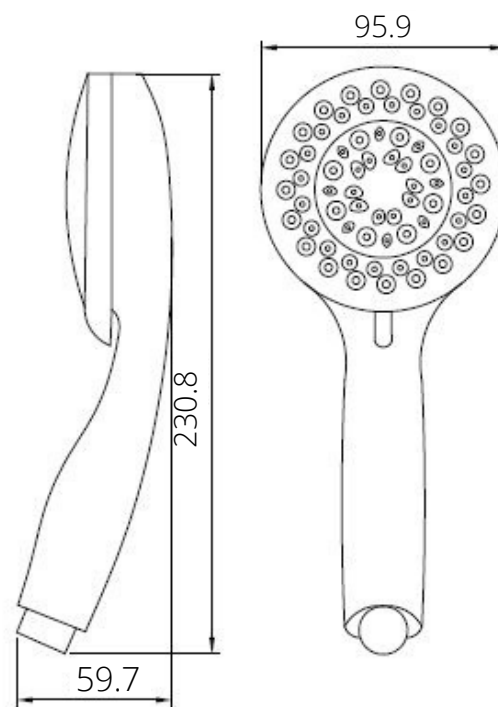
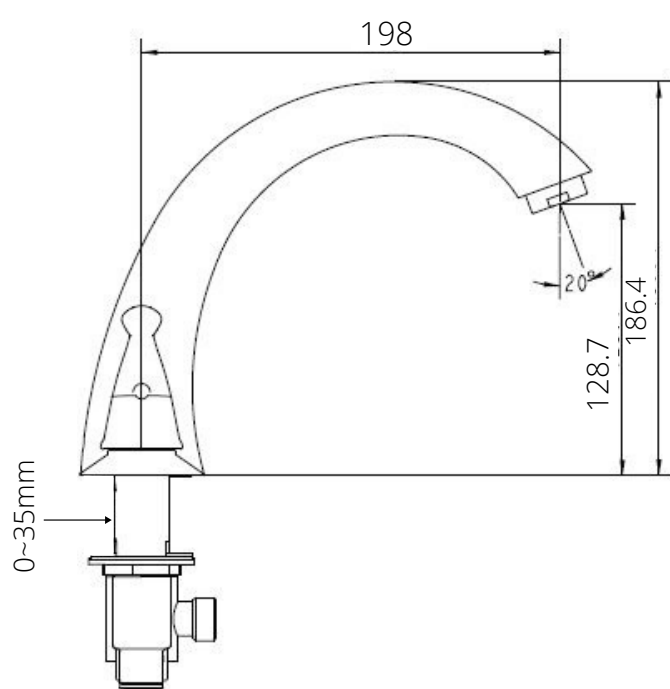
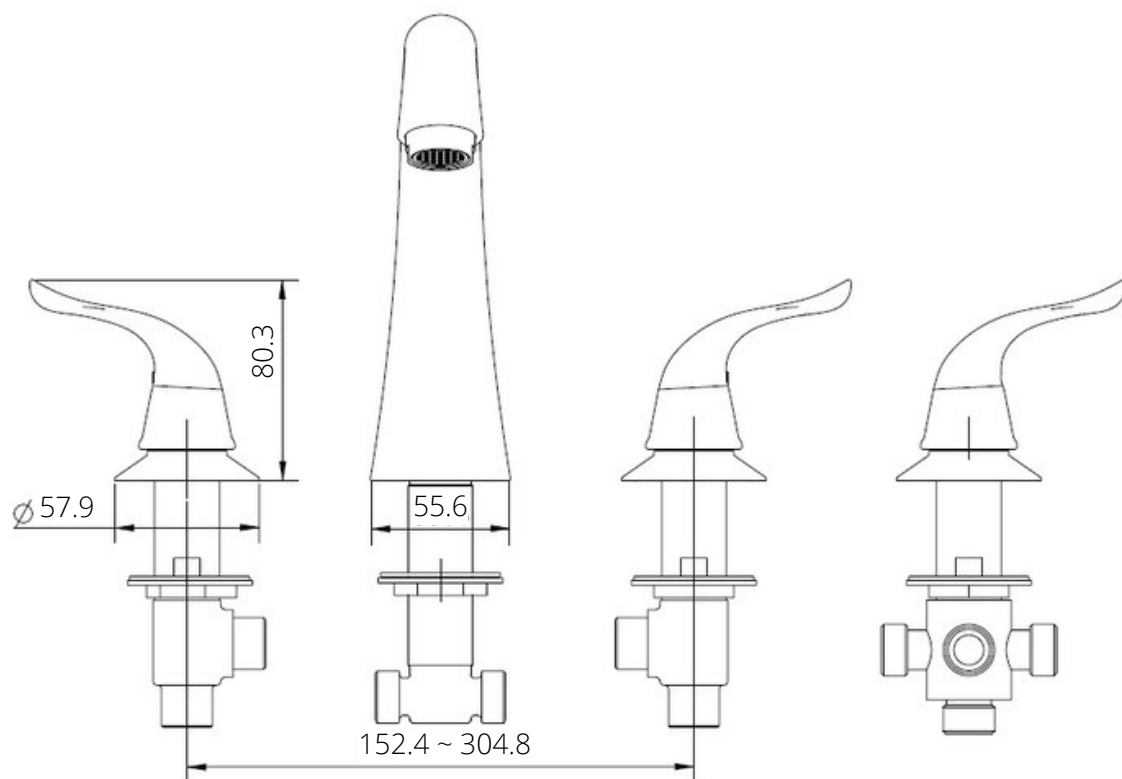
- 40mm high flow cartridge design
- Nonmetallic/nonferrous and stainless-steel material



## Ella 5 Piece Fast-Fill Faucet Contents



# Ella 5 Piece Single Lever Fast-Fill Faucet





# Ella 2 Piece Single Lever Fast-Fill Faucet

## Description

Solid brass spout chrome finish single lever high flow bathtub faucet with diverter button Two (2) 3/4" 5' braided stainless-steel supply lines Pull out hand shower mixer with 5 settings and 5' braided hose in a Chrome or Brushed Nickel finish.

## Flow

- Hand shower is limited to 1.9 GPM (7.5L/min)
- Faucet fill rate designed for 16 GPM (68.1L/min)

## Cartridge

- 40mm high flow cartridge design

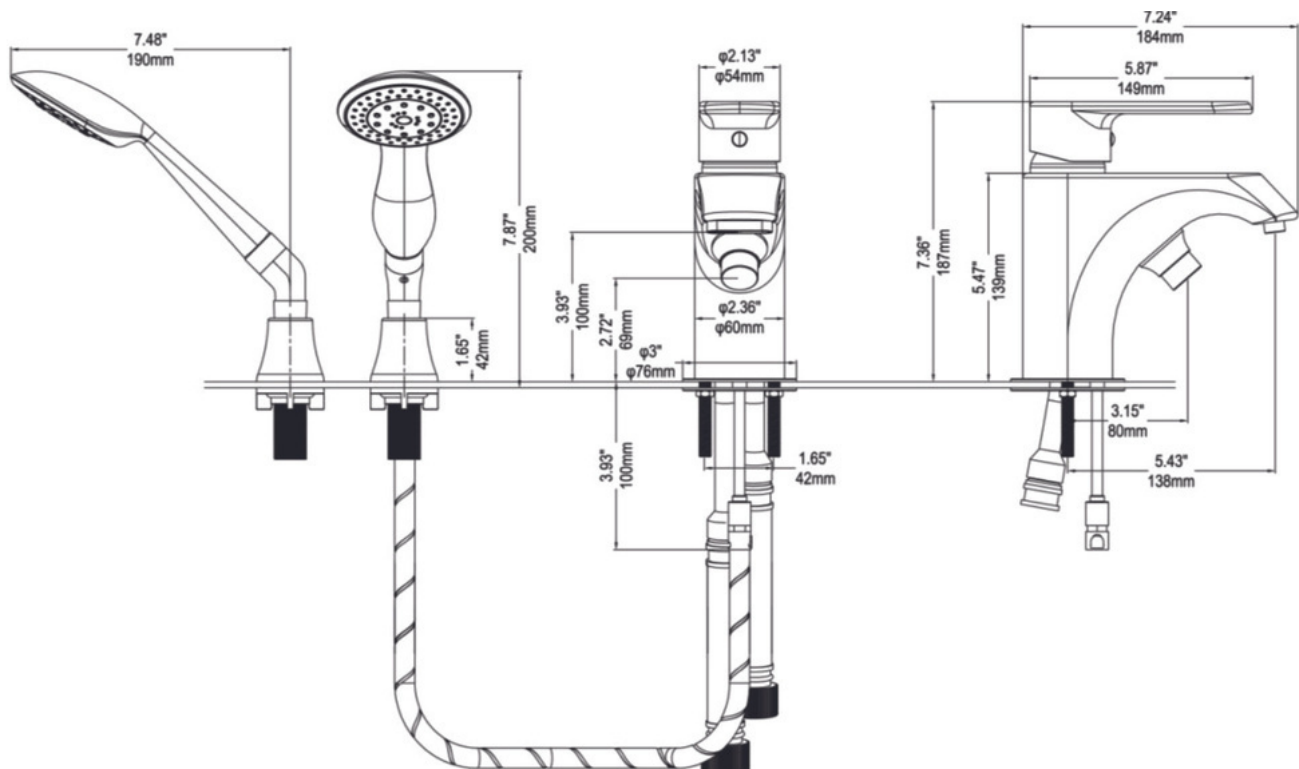
## Standards

Certified to meet:

- CSA B-125.1, ASME A112.18.1, ICC 117.1
- Certified to ANSI/NSF 61/9
- ADA for lever handle
- IAPMO R&T UPC certified



**NOTE:** This faucet is designed to be installed through: G.W: 7.75 kg/ 17 lbs., 2-1/2" diameter hole for faucet, 1/3" diameter hole for mounting rods, 7/8" diagonal hole for hand shower



## Laydown Tub Shower Screen Install



The gasket needs to point inward towards the tub

