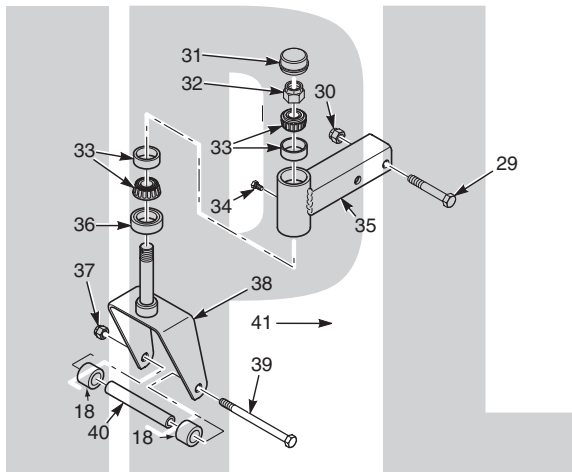


SCAG[®]

POWER EQUIPMENT



ILLUSTRATED PARTS MANUAL



Model SFZ Freedom Z

THIS MANUAL CONTAINS THE ILLUSTRATED PARTS LIST FOR MODELS:

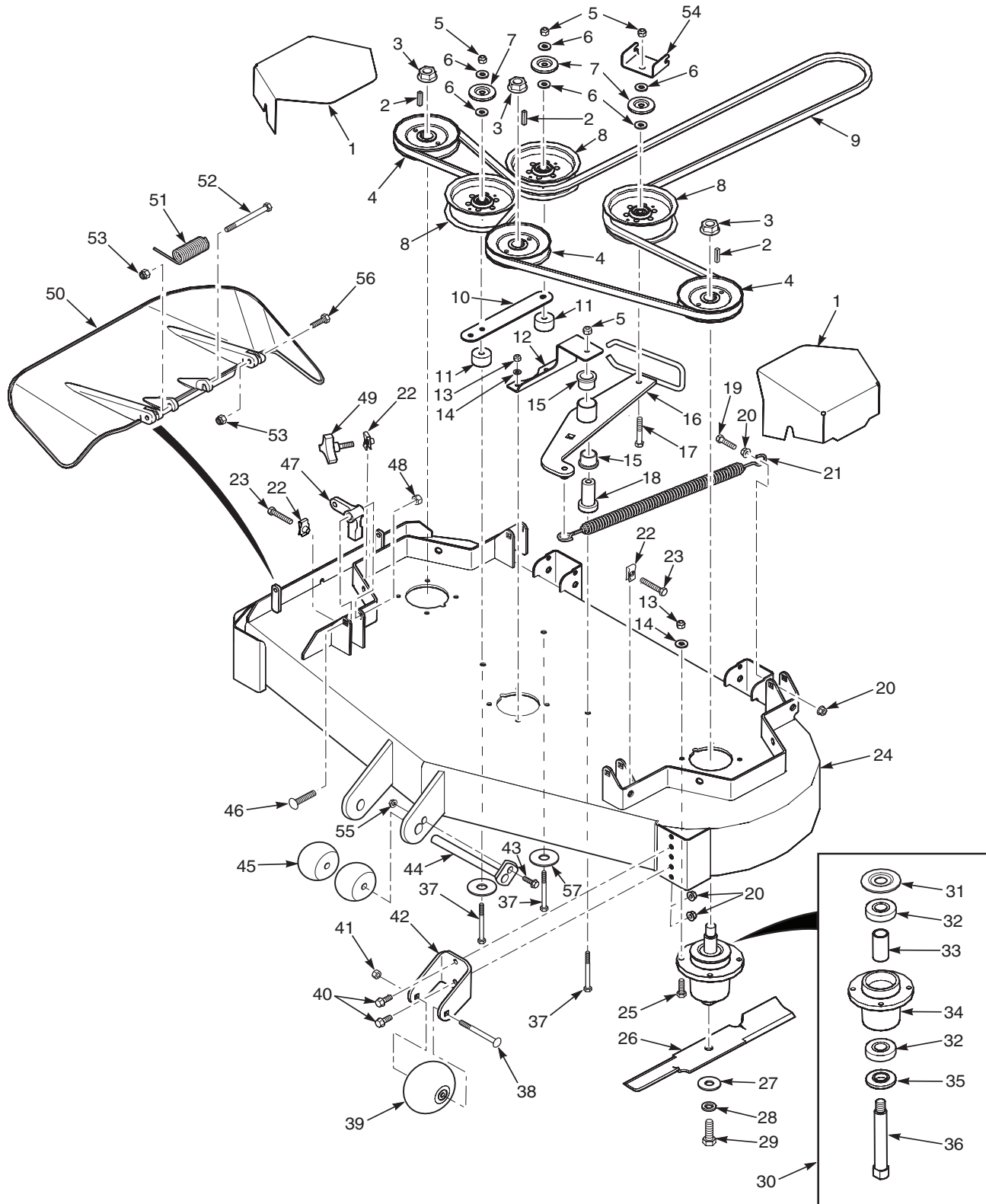
SFZ-48H-24KT
SFZ-48H-24SR
SFZ-52H-26KT
SFZ-52H-27SR

with a serial number of S6600001 to S6699999
with a serial number of T5300001 to T5399999
with a serial number of S6700001 to S6799999
with a serial number of T5400001 to T5499999

Table of Contents

| | |
|---|----|
| 48H & 52H CUTTER DECKS | 2 |
| CUTTER DECK CONTROLS - SFZ48H / 52H | 4 |
| SHEET METAL COMPONENTS | 6 |
| SFZ ROLL-OVER PROTECTION SYSTEM | 8 |
| DRIVE SYSTEM COMPONENTS - SFZ48H / 52H | 10 |
| EXHAUST AND ELECTRICAL SYSTEM - SFZ48H / 52H..... | 12 |
| FUEL SYSTEM - SFZ48H / 52H..... | 14 |
| FREEDOM TRANSAXLE | 16 |
| REPLACEMENT DECALS AND INFORMATION PLATES | 18 |
| ELECTRICAL SCHEMATIC | 20 |

48H & 52H CUTTER DECKS



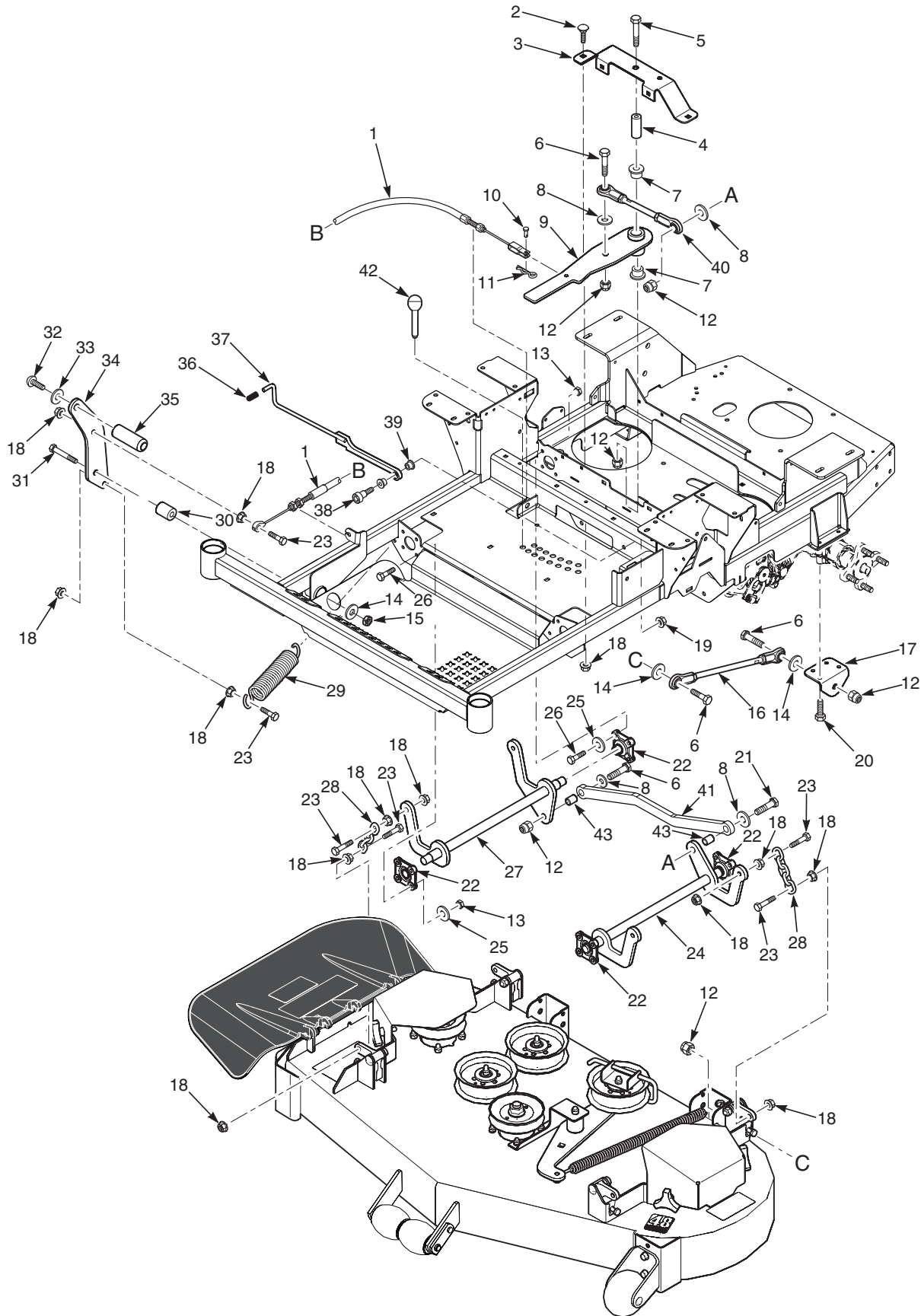
ILLUSTRATED PARTS LIST

48H & 52H CUTTER DECKS

| | Part No. | Description | 48 | 52 |
|----|-----------|--|----|----|
| 1 | 424528 | Belt Cover | x | x |
| 2 | 04063-01 | Key, 1/4 x 1/4 x 1-1/4" | x | x |
| 3 | 04112-06 | Nut, 3/4-16 Spiral Lock | x | x |
| 4 | 483323 | Pulley, 5.13" OD - 25mm Bore | x | |
| | 483324 | Pulley, 5.73" OD - 25mm Bore | | x |
| 5 | 04021-09 | Nut, Elastic Stop 3/8-16 | x | x |
| 6 | 04043-04 | Flatwasher, 3/8-.391 x .938 x .105 | x | x |
| 7 | 424367 | Dust Shield | x | x |
| 8 | 483422 | Pulley, 5" Idler | x | x |
| 9 | 483325 | Belt, Cutter Deck | x | |
| | 483326 | Belt, Cutter Deck | | x |
| 10 | 424479 | Brace, Pulley | x | x |
| 11 | 43711 | Spacer | x | x |
| 12 | 424548 | Support, Idler Pivot | x | |
| | 424547 | Support, Idler Pivot | | x |
| 13 | 04021-22 | Nut, Elastic Stop | x | x |
| 14 | 04030-03 | Lockwasher, 5/16 Spring | x | x |
| 15 | 483453-03 | Bearing | x | x |
| 16 | 462037 | Idler Arm (incl. item #15) | x | x |
| 17 | 04001-31 | Bolt, Hex Head 3/8-16 x 2-1/2" | x | x |
| 18 | 43708 | Pivot, Idler | x | x |
| 19 | 04001-136 | Bolt, Hex Head 3/8-16 x 1-1/2 Gr.8 | x | x |
| 20 | 04019-04 | Nut, Serrated Flange 3/8-16 | x | x |
| 21 | 483375 | Spring, Idler | x | x |
| 22 | 04110-03 | U-Nut, 3/8-16 | x | x |
| 23 | 04107-04 | Bolt, Hex Head 3/8-16 x 2" Special Lock | x | x |
| 24 | 463307 | Cutter Deck w/Decals, SFZ48 | x | |
| | 463308 | Cutter Deck w/Decals, SFZ52 | | x |
| 25 | 4001-11 | Bolt, Hex Head 5/16-18 x 1-1/2" | x | x |
| 26 | 482877 | Cutter Blade, 16-1/2" | x | |
| | 482878 | Cutter Blade, 18" | | x |

| | Part No. | Description | 48 | 52 |
|----|-----------|--|----|----|
| 27 | 04043-06 | Flatwasher, 5/8-.688 x 1.75 x .134 HD | x | x |
| 28 | 04030-07 | Lockwasher, 1/2 Spring | x | x |
| 29 | 04001-121 | Bolt, Hex Head 5/8-11 x 1-1/2" | x | x |
| 30 | 461950 | Spindle Assembly | x | x |
| 31 | 483304 | Debris Shield | x | x |
| 32 | 483303 | Bearing | x | x |
| 33 | 43693 | Spacer | x | x |
| 34 | 462014 | Spindle Housing Assembly (Incl. item #32, 33) | x | x |
| 35 | 43694 | Protector, Bearing | x | x |
| 36 | 43695 | Shaft, Spindle | x | x |
| 37 | 04001-77 | Bolt, Hex Head 3/8-16 x 3-1/2" | x | x |
| 38 | 04003-26 | Bolt, Carriage 3/8-16 x 4" | x | x |
| 39 | 481632 | Wheel, Anti-Scalp | x | x |
| 40 | 04017-27 | Bolt, Hex Head 3/8-16 x 1" Ser. Flg. | x | x |
| 41 | 04021-05 | Nut, Center Lock 3/8-16 | x | x |
| 42 | 427865 | Bracket, Anti-Scalp | x | x |
| 43 | 04001-09 | Bolt, Hex Head 5/16-18 x 1" | x | x |
| 44 | 451926 | Shaft Weldment | x | x |
| 45 | 482295 | Wheel, Anti-Scalp | x | x |
| 46 | 04003-42 | Bolt, Carriage 7/16-14 x 2-1/4" | x | x |
| 47 | 483361 | Lever, Deck Level | x | x |
| 48 | 04021-11 | Nut, Elastic Stop 7/16-14 | x | x |
| 49 | 481625-01 | Knob w/Stud | x | x |
| 50 | 462031 | Discharge Chute Assy. SFZ48 | x | |
| | 462032 | Discharge Chute Assy. SFZ52 | | x |
| 51 | 482245 | Spring, Discharge Chute | x | x |
| 52 | 04001-154 | Bolt, Hex Head 5/16-18 x 4-3/4" | x | x |
| 53 | 04021-10 | Nut, Elastic Stop 5/16-18 | x | x |
| 54 | 424615 | Bracket, Belt Guide | x | x |
| 55 | 04019-03 | Nut, Serrated Flange 5/16-18 | x | x |
| 56 | 04001-12 | Bolt, Hex Head 5/16-18 x 1-3/4" | x | x |
| 57 | 04041-38 | Flatwasher, 3/8-.406 x 2.25 x .1875 | x | x |

CUTTER DECK CONTROLS - SFZ48H / 52H

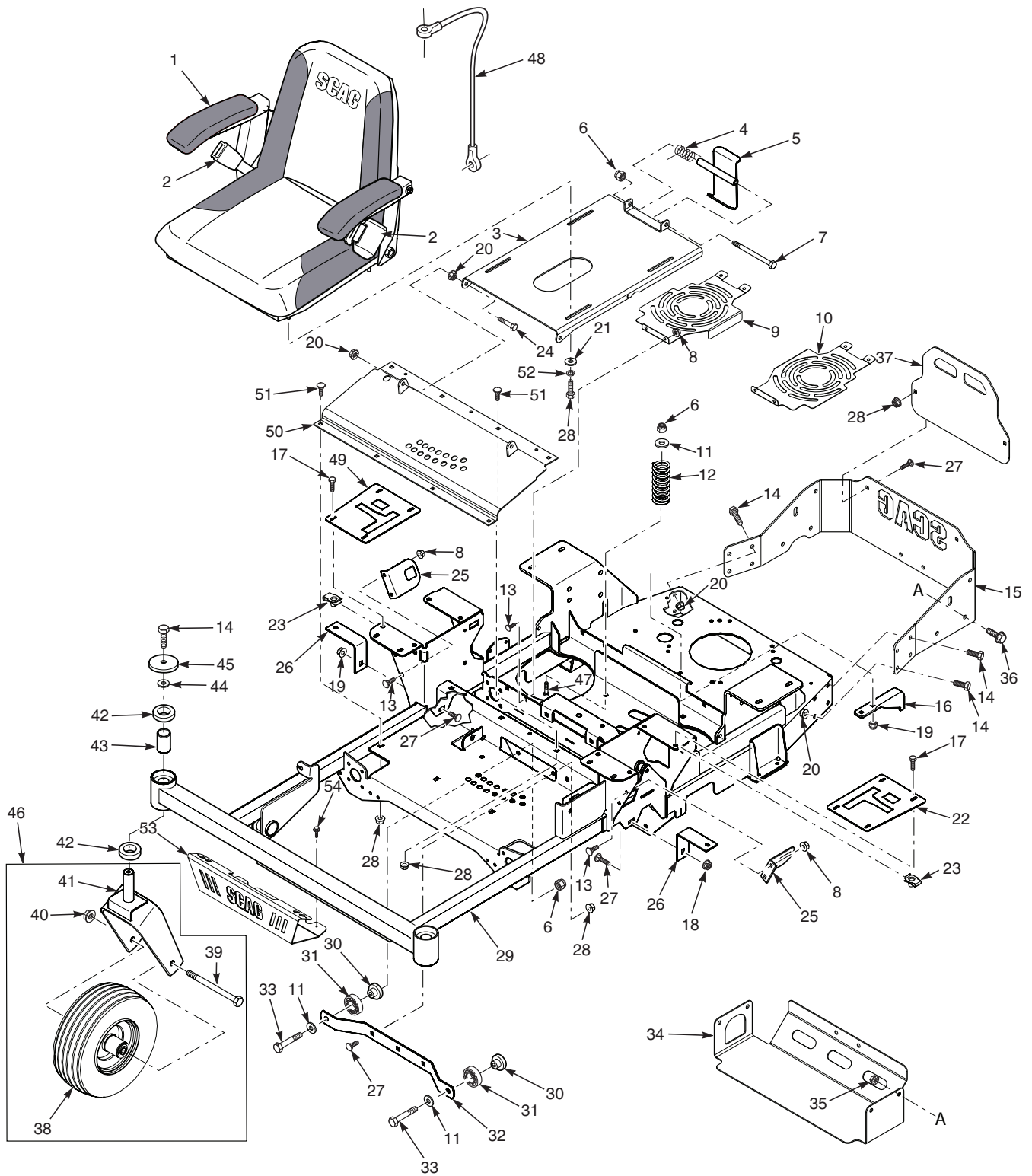


ILLUSTRATED PARTS LIST

CUTTER DECK CONTROLS - SFZ48H / 52H

| Ref. No. | Part No. | Description |
|----------|-----------|-------------------------------------|
| 1 | 483341 | Cable, Deck Lift |
| 2 | 04003-31 | Bolt, Carriage 3/8-16 x 3/4" |
| 3 | 424476 | Support, Idler Arm |
| 4 | 43710 | Spacer, Deck Lift Pivot |
| 5 | 04001-90 | Bolt, Hex Head 1/2-13 x 3-3/4" |
| 6 | 04001-72 | Bolt, Hex Head 1/2-13 x 2" |
| 7 | 483453-03 | Bearing |
| 8 | 04040-07 | Flatwasher, 1/2-.531 x 1.06 x .095 |
| 9 | 462215 | Deck Lift Bellcrank Assembly |
| 10 | 04064-17 | Clevis Pin, 5/16 x 3/4" |
| 11 | 04062-01 | Hair Pin, .094 x 1.62" |
| 12 | 04021-07 | Nut, Elastic Stop 1/2-13 |
| 13 | 04117-01 | Nut, Flange, Elastic Stop 5/16-18 |
| 14 | 04040-13 | Flatwasher, 1/2-.562 x 1.375 x .109 |
| 15 | 04021-09 | Nut, Center Lock 1/2-13 |
| 16 | 483332 | Linkage, Push Arm |
| 17 | 424489 | Bracket, Push Arm Link |
| 18 | 04019-04 | Nut, Serrated Flange 3/8-16 |
| 19 | 04021-09 | Nut, Elastic Stop 3/8-16 |
| 20 | 04001-49 | Bolt, Hex Head 5/16-18 x 3" |
| 21 | 04001-74 | Bolt, Hex Head 1/2-13 x 3" |
| 22 | 483334 | Bearing, Deck Lift |
| 23 | 04001-20 | Bolt, Hex Head 3/8-16 x 1-1/2" |
| 24 | 451868 | Weldment, Deck Lift LH |
| 25 | 04040-14 | Flatwasher, 1/4-.312 x .750 x .065 |
| 26 | 04001-09 | Bolt, Hex Head 5/16-18 x 1" |
| 27 | 451867 | Weldment, Deck Lift RH |
| 28 | 482628 | Chain, Deck lift |
| 29 | 483374 | Spring, Deck Lift |
| 30 | 43710 | Sleeve, Deck Lift Pivot |
| 31 | 04001-74 | Bolt, Hex Head 1/2-13 x 3" |
| 32 | 04105-01 | Bolt, Head Socket 5/8-11 x 1-1/2" |
| 33 | 04030-07 | Lockwasher, 5/8 Spring |
| 34 | 424535 | Pedal, Foot Bracket |
| 35 | 424504 | Foot Pedal |
| 36 | 483492 | Grip, Deck Latch |
| 37 | 491254 | Weldment, Deck Latch |
| 38 | 04009-06 | Bolt, Shoulder 1/2 x 1/2 |
| 39 | 483453-10 | Bearing |
| 40 | 483328 | Linkage Assembly, Deck Lift |
| 41 | 426579 | Link, Deck Lift |
| 42 | 483498 | Pin, Height Adjuster |
| 43 | 43957 | Sleeve |

SHEET METAL COMPONENTS



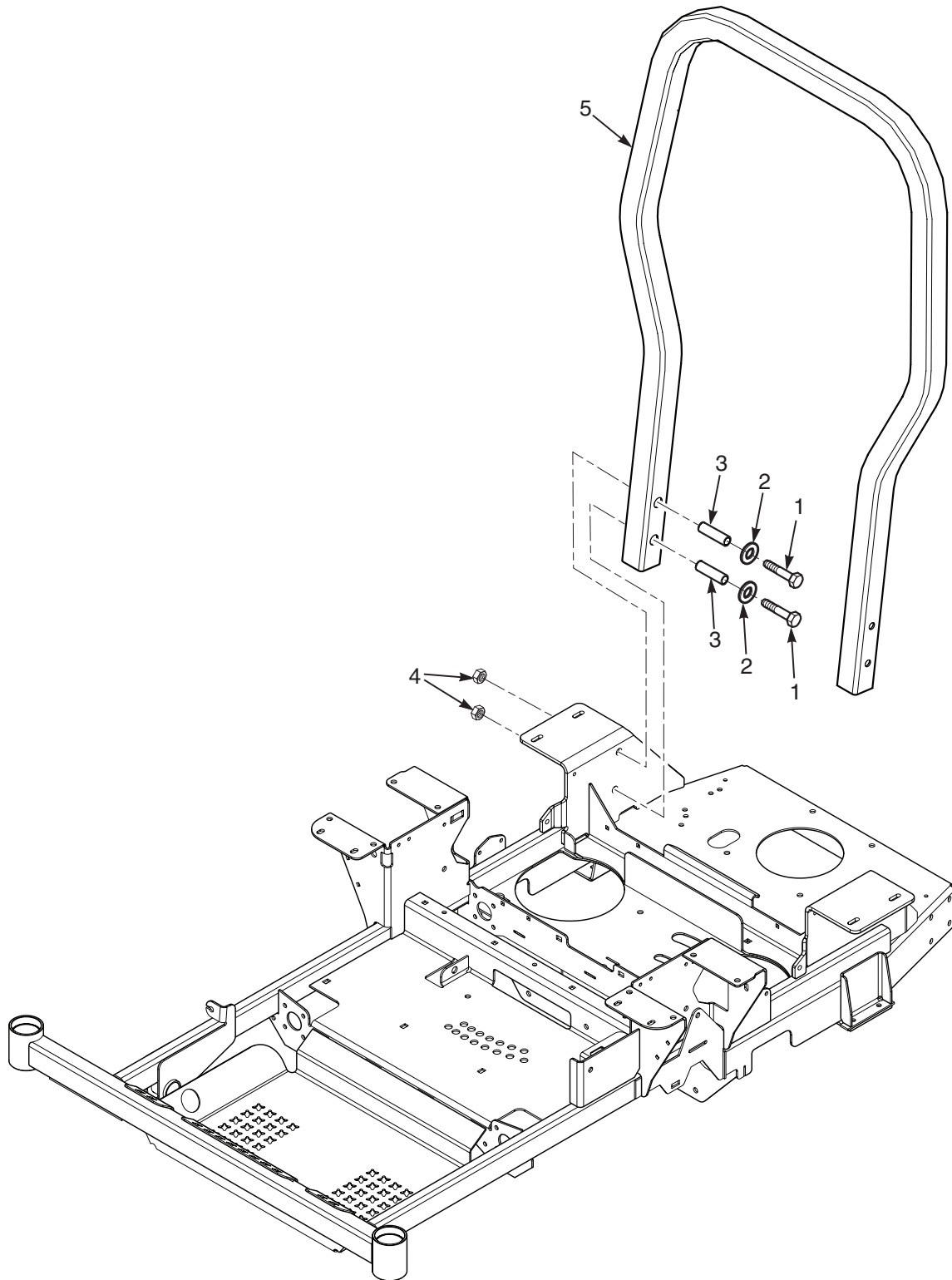
SHEET METAL COMPONENTS

| | Part No. | Description |
|----|---------------|---|
| 1 | 486713 | Seat Assembly |
| | 486773 | Back Cushion |
| | 486774 | Cover, Bottom Cushion |
| | 486776 | Arm Rest Kit |
| | 486775 | Cap, Actuator Switch |
| | 483473 | Switch |
| 2 | 485164 | Seat Belt Assembly, Retractable |
| | 461990 | Hardware Package, Mounting |
| 3 | 463296 | Seat Base w/Decal |
| 4 | 483371 | Spring, Seat Latch |
| 5 | 451883 | Seat Latch |
| 6 | 04021-09 | Nut, Elastic Stop 3/8-16 |
| 7 | 04001-100 | Bolt, Hex Head 3/8-16 x 6" |
| 8 | 04019-02 | Nut, Serrated Flange 1/4-20 |
| 9 | 425698 | Cover, Fan RH |
| 10 | 425697 | Cover, Fan LH |
| 11 | 04041-07 | Flatwasher, 3/8-.391 x .938 x .105 |
| 12 | 483372 | Spring, Seat |
| 13 | 04003-07 | Bolt, Carriage 1/4-20 x 1" |
| 14 | 04017-27 | Bolt, Hex Head Flange 3/8-16 x 1" |
| 15 | 427870 | Rear Bumper |
| 16 | 424523 | Bracket, Anti-Rotation |
| | 425328 | Bracket, Anti-Rotation (see below) (used on Scag LC2P82F) |
| | *** | (used on Kohler 26KT - 1.125" see below) |
| 17 | 04017-06 | Bolt, Hex Head 1/4-20 x 1" |
| 18 | 04117-01 | Nut, Elastic Stop Flange 5/16-18 |
| 19 | 04021-10 | Nut, Elastic Stop 5/16-18 |
| 20 | 04019-04 | Nut, Serrated Flange 3/8-16 |
| 21 | 04040-15 | Flatwasher, 5/16-.375 x .875 x .083 |
| 22 | 463170 | Control Plate LH (Black) |
| 23 | 04110-01 | U-Nut 1/4-20 |
| 24 | 04001-20 | Bolt, Hex Head 3/8-16 x 1-1/2" |
| 25 | 424511 | Bracket, Switch Mount |
| 26 | 424516 | Bracket, Tank Mount |

| Ref. No. | Part No. | Description |
|----------|-----------|--|
| 27 | 04003-12 | Bolt, Carriage 5/16-18 x 3/4" |
| 28 | 04001-08 | Bolt, Hex Head 5/16-18 x 3/4" |
| 29 | 463434 | Main Frame w/Decals |
| 30 | 43703 | Spacer, Bearing |
| 31 | 483379 | Bearing |
| 32 | 424480 | Support, Deck Guide |
| 33 | 04001-21 | Bolt, Hex Head 3/8-16 x 1-3/4" |
| 34 | 427871 | Heatshield |
| | 428937 | Heatshield - Scag LC2P77F/82F Engine |
| 35 | 04019-04 | Nut, Serrated Flange 3/8-16 |
| 36 | 04017-27 | Bolt, Hex Head Serrated Flange 3/8-16 x 1" |
| 37 | 427862 | Engine Guard |
| 38 | 486310 | Caster Wheel Assembly (INCL. Rim - 486311) |
| | 485941 | Tire, 11 x 6.00-5 |
| 39 | 04001-134 | Bolt, Hex Head 1/2-13 x 7-1/2" |
| 40 | 04021-07 | Nut, Elastic Stop 1/2-13 |
| 41 | 453010 | Yoke, Caster Wheel |
| 42 | 483466 | Bearing |
| | 424636 | Spacer, Yoke (not shown) |
| 43 | 43736 | Spacer, Caster Bearing |
| 44 | 04040-11 | Flatwasher, 7/16-.50 x 1.250 x .083 |
| 45 | 04041-38 | Flatwasher, 3/8-.406 x 2.25 x .188 |
| 46 | 463114 | Caster Wheel Assembly w/Yoke |
| 47 | 04003-11 | Bolt, Carriage 3/8-16 x 1-1/4" |
| 48 | 483559 | Cable, Seat Stop |
| 49 | 463171 | Control Plate RH (Black) |
| 50 | 463136 | Weldment, Deck Lift Cover w/Decal |
| 51 | 04003-14 | Bolt, Carriage 5/16-18 x 1/2" |
| 52 | 04030-03 | Lockwasher, 5/16" Spring |
| 53 | 427868 | Bumper, Front |
| 54 | 04011-29 | Screw, 1/4-20 x 3/4" Shakeproof |

*** Used on a limited production build of model SFZ52H-26KT in the following serial number range.
R7700001 - R7700289

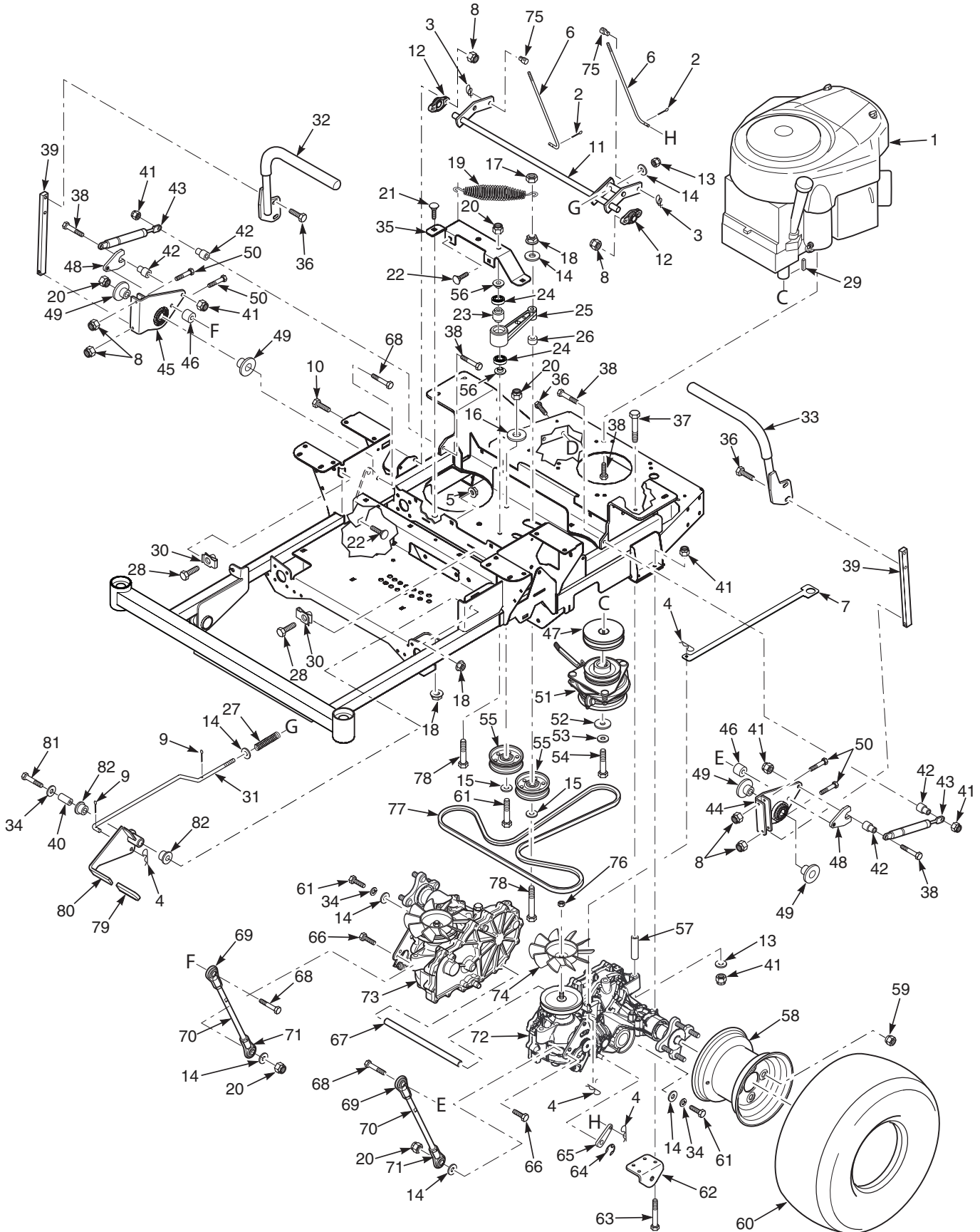
SFZ ROLL-OVER PROTECTION SYSTEM



SFZ ROLL-OVER PROTECTION SYSTEM

| Ref. No. | Part No. | Description |
|-----------------|-----------------|---------------------------------------|
| 1 | 04001-184 | Bolt, Hex Head 1/213 x 3-1/4" Gr. 8 |
| 2 | 04040-07 | Flatwasher, 1/2 - .531 x 1.062 x .095 |
| 3 | 43743 | Bushing, SFZ ROPS |
| 4 | 04117-04 | Nut, Flanged Elastic Stop, 1/2-13 |
| 5 | 463113 | ROPS, SFZ48H, SFZ52H |

DRIVE SYSTEM COMPONENTS - SFZ48H / 52H



ILLUSTRATED PARTS LIST

DRIVE SYSTEM COMPONENTS - SFZ48H / 52H

| Ref. No. | Part No. | Description |
|----------|------------------|--|
| 1 | **485972 | Engine, Kohler 24KT - 1" Crankshaft |
| | 487171 | Engine, Scag LC2P77F - 1" Crankshaft |
| | **486903 | Engine, Kohler 26KT - 1" Crankshaft |
| | ***486021 | Engine, Kohler 26KT - 1.125" (see below) |
| | 487173 | Engine, Scag LC2P82F - 1.125" Crankshaft |
| * | 482510 | Oil Drain (not shown) |
| 2 | 04061-01 | Cotter Pin, 3/32 x 1" |
| 3 | 04069-01 | Pin, Rue Cotter 3/8" Dia. |
| 4 | 04062-02 | Hair Pin, .080 x 1.19" |
| 5 | 04019-03 | Nut, Serrated Flange 5/16-18 |
| 6 | 44165 | Rod, Brake Adjustment |
| 7 | 426591 | Lever, Dump Valve |
| 8 | 04117-03 | Nut, Elastic Stop Flange 1/4-20 |
| 9 | 04062-01 | Hairpin, Cotter |
| 10 | 04017-06 | Bolt, Serrated Flange 1/4-20 x 1" |
| 11 | 451884 | Weldment, Brake Lever |
| 12 | 483504 | Bearing |
| 13 | 04040-15 | Flatwasher, 5/16-.375 x .875 x .083 |
| 14 | 04041-07 | Flatwasher, 3/8-.391 x .938 x .105 |
| 15 | 04043-04 | Flatwasher, 3/8-.391 x .938 x .105 HD |
| 16 | 04041-11 | Flatwasher, 3/8-.406 x 1.5 x 7 GA. |
| 17 | 04021-05 | Nut, Center Lock 3/8-16 |
| 18 | 04019-04 | Nut, Serrated Flange 3/8-16 |
| 19 | 483087 | Spring, Transmission Idler |
| 20 | 04021-09 | Nut, Elastic Stop 3/8-16 |
| 21 | 04003-31 | Bolt, Carriage 3/8-16 x 3/4" |
| 22 | 04003-12 | Bolt, Carriage 5/16-18 x 3/4" |
| 23 | 431073 | Spacer, Bearing |
| 24 | 48224 | Bearing |
| 25 | 463017 | Transmission Idler Arm Assy (Incl. #23 & 24) |
| 26 | 43674 | Spacer, Idler Pulley |
| 27 | 483538 | Spring, Brake |
| 28 | 04107-01 | Bolt, Hex Head 3/8-16 x 1-1/4" Special Lock |
| 29 | 04063-19 | Key, 1/4 x 1/4 x 3/4" |
| 30 | 04110-03 | U-Nut, 3/8-16 |
| 31 | 44157 | Rod, Brake Linkage |
| 32 | 462434 | Handle Bar Assembly RH, w/Grip |
| | 484376 | Grip |
| 33 | 462433 | Handle Bar Assembly LH, w/Grip |
| | 484376 | Grip |
| 34 | 04041-07 | Flatwasher, 3/8-.391 x .938 x .105 |
| 35 | 424476 | Support, Idler Arm |
| 36 | 04017-27 | Bolt, Hex Head Flange 3/8-16 x 1" |
| 37 | 04001-95 | Bolt, Hex Head 5/16-18 x 5" |
| 38 | 04001-11 | Bolt, Hex Head 5/16-18 x 1-1/2" |
| | 04011-29 | Bolt, Self Tapping 1/4-20 x 3/8" (ground) |
| 39 | 424498 | Bar, Control Lever |
| 40 | 43969 | Pivot, Brake Lever |
| 41 | 04021-10 | Nut, Elastic Stop 5/16-18 |
| 42 | 43602 | Spacer, Pump Dampener |
| 43 | 484193 | Dampener |
| 44 | 462127 | Control Link, LH |
| 45 | 462128 | Control Link, RH |
| 46 | 43674 | Spacer |
| 47 | 486010 | Pulley, 4-1/2" Dia. 1" Bore |
| | 484071 | Pulley, 4-1/2" Dia. 1.125" Bore (used on Scag LC2P82F) |
| | *** | (used on Kohler 26KT - 1.125" see below) |
| 48 | 424687 | Nut, Control Linkage |

| Ref. No. | Part No. | Description |
|----------|--------------------|--|
| 49 | 43719 | Spacer, Linkage |
| 50 | 04001-04 | Bolt, Hex Head 1/4-20 x 1-1/2" |
| 51 | 462715 | Electric Clutch Assembly |
| | 462228 | Electric Clutch Assembly (used on Scag LC2P82F) |
| | *** | (used on Kohler 26KT - 1.125" see below) |
| | 04063-19 | Key, 1/4 x 1/4 x 3/4" |
| | 04063-08 | Key, 1/4 x 1/4 x 2-1/2" (used on Scag LC2P82F) |
| | ***04063-03 | Key, 1/4 x 1/4 x 2-1/2" (see below) |
| 52 | 04041-28 | Flatwasher, 7/16-.469 x 1.75 x .25 |
| | 43832 | Spacer, Crankshaft (see below) (used on Scag LC2P82F) |
| | *** | (used on Kohler 26KT - 1.125" see below) |
| 53 | 04030-05 | Lockwasher, 7/16" spring |
| 54 | 04102-03 | Bolt, Hex Head 7/16-20 x 2-1/4" Patch |
| | 04102-08 | Bolt, Hex Head 7/16-20 x 1-1/2" Patch (used on Scag LC2P82F) |
| | *** | (used on Kohler 26KT - 1.125" see below) |
| 55 | 486045 | Pulley, 3-1/2" Dia. |
| 56 | 431049 | Spacer, Idler Arm |
| 57 | 43700 | Spacer, Axle |
| 58 | 486316 | Rim w/Valve Stem |
| 59 | 04028-02 | Wheel Nut, 1/2-20 |
| 60 | 486315 | Wheel Assembly (INCL.58) |
| | 485950 | Tire, 20 x 10-10 4-Ply |
| 61 | 04001-31 | Bolt, Hex Head 3/8-16 x 2-1/2" |
| 62 | 424489 | Bracket, Pusharm Link |
| 63 | 04001-49 | Bolt, Hex Head 5/16-18 x 3" |
| 64 | HG53019 | Clip, Brake Lever (order through Hydro-Gear) |
| 65 | HG52639 | Lever, Brake (order through Hydro-Gear) |
| 66 | 04001-20 | Bolt, Hex Head 3/8-16 x 1-1/2" |
| 67 | 43701 | Spacer, Axle |
| 68 | 04001-45 | Bolt, Hex Head 3/8-16 x 2" |
| 69 | 483340 | Rod End, 3/8-24 LH |
| 70 | 483337 | Linkage, Pump (incl. #69, 71) |
| 71 | 483339 | Rod End, 3/8-24 RH |
| 72 | 486817 | Transaxle Assy., LH (ZK-KCBC-SLKG-3NTX) |
| 73 | 486818 | Transaxle Assy., RH (ZK-GCBC-SLKF-2NTX) |
| 74 | HG53823 | Fan (order through Hydro-Gear) |
| 75 | 43726 | Joint, Swivel |
| 76 | HG44133 | Fan Nut (order through Hydro-Gear) |
| 77 | 483314 | Belt, Transmission Drive |
| 78 | 04001-62 | Bolt, Hex Head 3/8-16 x 3-1/4" |
| 79 | 482102 | Grip, Brake Handle |
| 80 | 462010 | Brake Handle Assembly |
| 81 | 04001-31 | Bolt, Hex Head 3/8-16 x 2-1/2" |
| 82 | 483453-05 | Bearing |

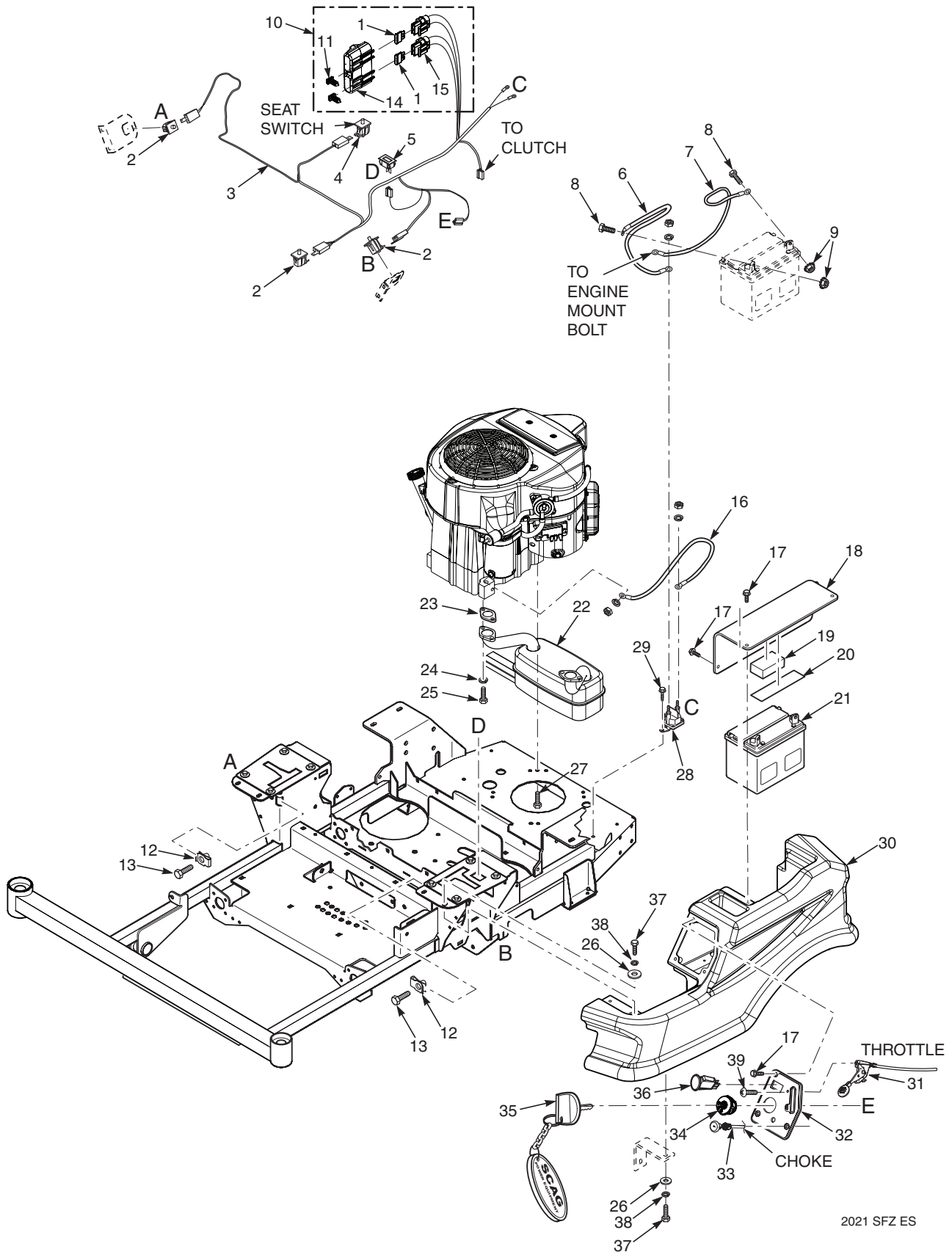
* Not shown

** Available through engine manufacturer.

*** Used on a limited production build of model SFZ52H-26KT in the following serial number range.

S6700001 - S6700100

EXHAUST AND ELECTRICAL SYSTEM - SFZ48H / 52H



2021 SFZ ES

ILLUSTRATED PARTS LIST

EXHAUST AND ELECTRICAL SYSTEM - SFZ48H / 52H

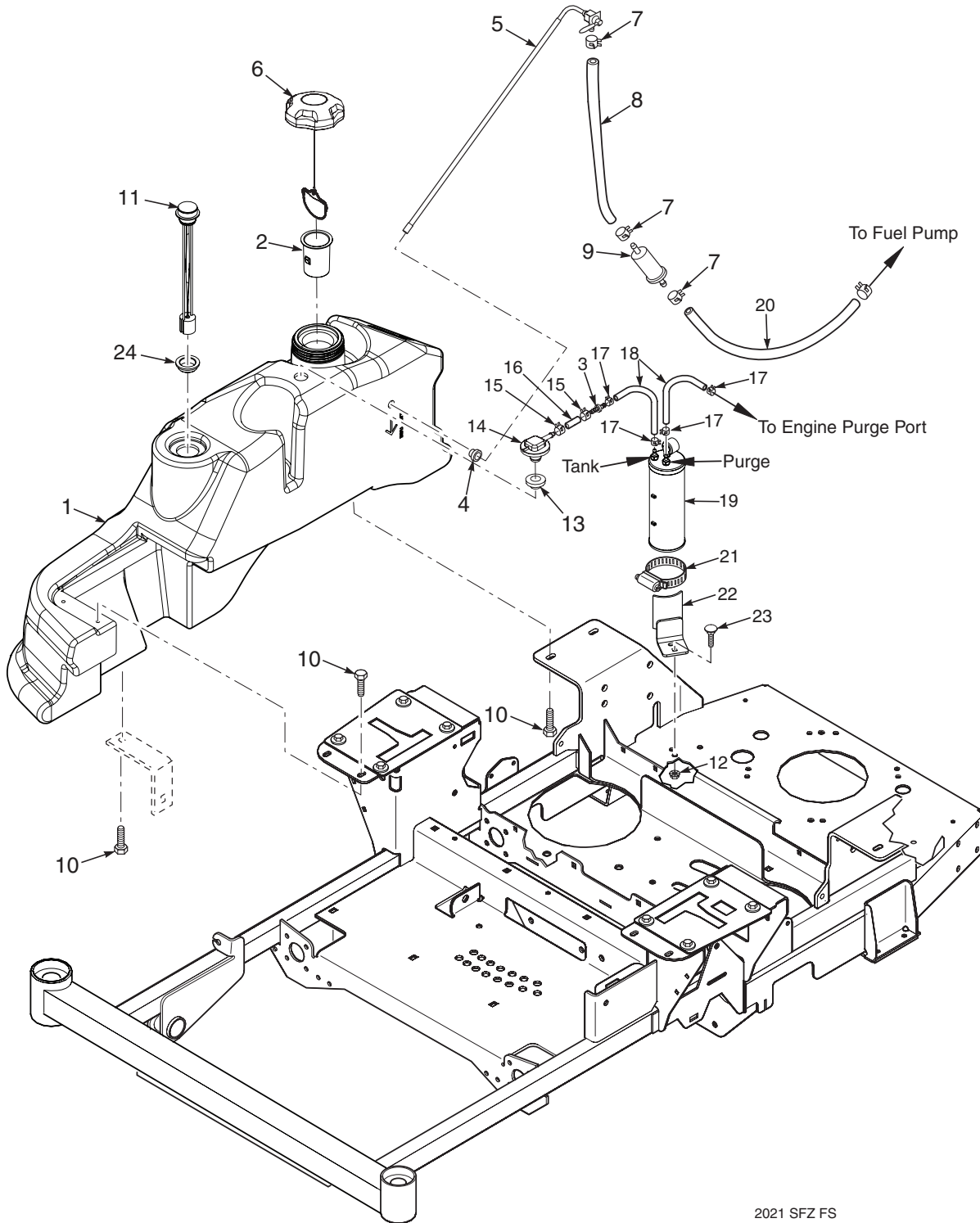
| Ref. No. | Part No. | Description |
|----------|----------|---|
| 1 | 48298 | Fuse, 20 amp |
| 2 | 483473 | Switch |
| 3 | 486015 | Wire Harness, Main |
| 4 | 483473 | Switch, Seat |
| 5 | 484565 | Hourmeter, Inductive |
| 6 | 48029-13 | Battery Cable, Red 25" |
| 7 | 48029-11 | Battery Cable, Black 27" |
| 8 | 04001-44 | Bolt, Hex Head 1/4-20 x 1/2" |
| 9 | 04020-02 | Nut, 1/4-20 |
| 10 | 483642 | Double Fuse Assy. (incl. items 1, 14, 15, 46) |
| 11 | 482588 | Clip, Wire |
| 12 | 04110-03 | U-Nut, 3/8-16 |
| 13 | 04107-03 | Bolt, Hex Head 3/8-16 x 1-1/4" Special Lock |
| 14 | 483571 | Cover, Sealed Double |
| 15 | 483629 | Fuse Holder |
| 16 | 48029-09 | Battery Cable, Red 9" |
| 17 | 04017-04 | Bolt, Hex Head 1/4-20 x 1/2" Serr. Flange |
| 18 | 463319 | Battery Cover (incl. items 19 & 20) |
| 19 | 485506 | Pad, Battery Hold Down |
| 20 | 483508 | Rubber Pad |
| 21 | *483665 | Battery (not avail. through Scag) |
| 22 | 485336 | Muffler, Kohler KT |
| 23 | ** | Exhaust Gasket |
| 24 | 04040-15 | Lockwasher |
| 25 | 04001-32 | Bolt |
| 26 | 04030-04 | Flatwasher, 5/16-.375 x .875 x .083 |
| 27 | 04011-07 | Bolt, Hex Head 3/8-16 x 1-1/4" |

| Ref. No. | Part No. | Description |
|----------|----------|---|
| 28 | 483278 | Solenoid |
| 29 | 04011-29 | Bolt, Self Tapping 1/4-20 x 3/8" Shakeproof |
| 30 | 463301 | Tank Console 48 |
| 31 | 483645 | Throttle Cable - Kohler |
| | | Throttle Cable - Scag LC2P77F/82P |
| 32 | 462322 | Instrument Panel w/Decal |
| 33 | 483646 | Choke Cable - Kohler |
| | 483435 | Choke Cable - Scag LC2P77F/82P |
| 34 | 483472 | Ignition Switch |
| 35 | 462069 | Key Assembly w/Fob |
| 36 | 485833 | PTO Switch |
| 37 | 04001-08 | Bolt, Hex Head 5/16-18 x 3/4" |
| 38 | 04030-03 | Lockwasher, 5/16" Spring |
| 39 | 04003-43 | Bolt, Carriage, 10-24 x .5 |

* Not available through Scag Power Equipment. Purchase locally.

** Available through individual engine manufacturer.

FUEL SYSTEM - SFZ48H / 52H



2021 SFZ FS

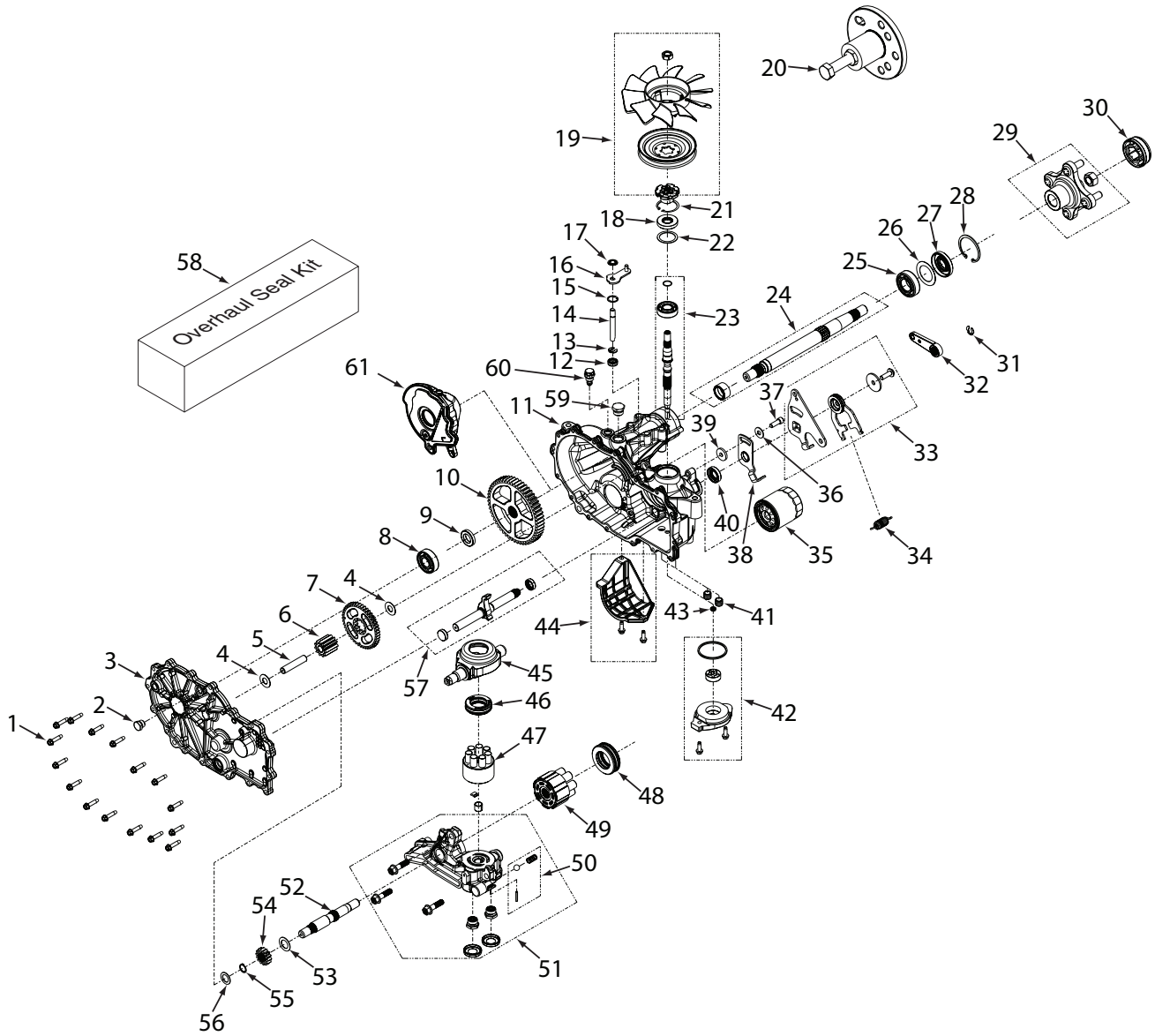
ILLUSTRATED PARTS LIST

FUEL SYSTEM - SFZ48H / 52H

| Ref. No. | Part No. | Description |
|----------|-----------|--|
| 1 | 463382 | Fuel Tank Assembly |
| 2 | 484279-01 | Tube, Fuel Tank Insert |
| 3 | 484343-01 | Mender, 1/4 x 3/16 w/0.02 Hole |
| 4 | 482571 | Bushing, .56 Dia. Viton |
| 5 | 483555 | Fuel Tube Assembly |
| 6 | 484286 | Fuel Cap, Tethered |
| | 484297 | Fuel Cap w/Tethered - California Models Only (not shown) |
| 7 | 48059-01 | Clamp, Fuel Hose 1/4" |
| 8 | 483617 | Fuel Hose, 1/4" Non-Perm (order by inch) |
| 9 | * | Fuel Filter |
| 10 | 04017-16 | Bolt, Hex Head 5/16-18 x 3/4" |
| 11 | 484243 | Fuel Gauge Assy. (incl. #24) |
| 12 | 04019-03 | Nut, Serrated Flange 5/16-18 |
| 13 | 484285 | Grommet, Viton |
| 14 | 484333 | Remote Vent |
| 15 | 48059-02 | Clamp, Fuel Hose 7/32" |
| 16 | 484347 | Hose, 1/4" Vapor Recovery (order by inch) |
| 17 | 48059-05 | Clamp, Vapor Recovery Hose |
| 18 | 484345 | Hose, 3/16" (order by inch) |
| 19 | 484342 | Carbon Canister |
| | 484366 | Dust Filter, Carbon Canister |
| 20 | * | Fuel Hose |
| 21 | 48136-17 | Clamp, Hose |
| 22 | 452233 | Bracket Weldment, Kohler Models |
| 23 | 04003-12 | Bolt, Carriage 5/16-18 x 3/4" |
| 24 | 484242 | Grommet, Fuel Gauge |

* = Available through engine manufacturer only.

FREEDOM TRANSAXLE



ILLUSTRATED PARTS LIST

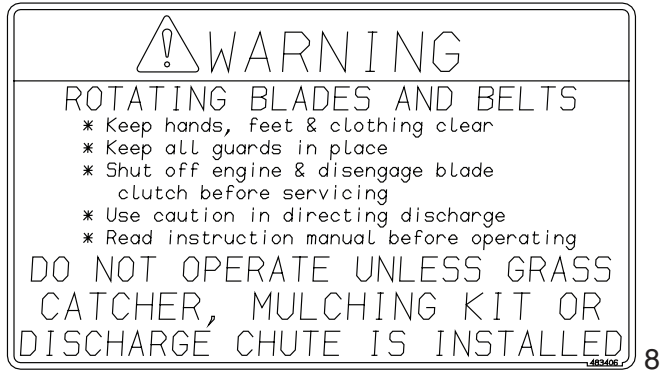
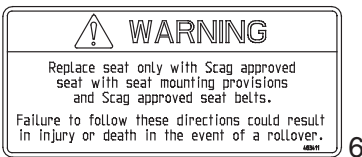
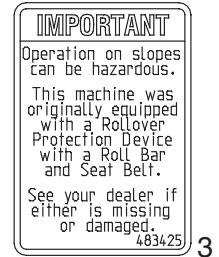
FREEDOM TRANSAXLE

| Ref. No. | Part No. | Description |
|----------|----------|---------------------------------------|
| 1 | HG53246 | Screw, Hex Washer |
| 2 | HG54730 | Plug, External Hex Vent 9/16-18 |
| 3 | HG73096 | Kit, Side Cover LH |
| | HG73095 | Kit, Side Cover RH |
| 4 | HG50132 | Washer, Flat, .51 x 1 x .03 |
| 5 | HG51083 | Pin, Jackshaft |
| 6 | HG52583 | Gear, 11T |
| 7 | HG52110 | Gear, 45T |
| 8 | HG72749 | Kit, Bearing |
| 9 | HG53336 | Spacer, .75 x 1.320 x .257 |
| 10 | HG52108 | Gear, 54T |
| 11 | HG73073 | Kit, Main Housing LH, Charge, Control |
| | HG73069 | Kit, Main Housing RH Charge, Control |
| 12 | HG55232 | Seal, Lip, .375 x .75 x .25 |
| 13 | HG51628 | Ring, Retaining External .375 |
| 14 | HG52136 | Rod, Bypass .375 x 2.88 |
| 15 | HG51627 | Ring, Retaining, .750, Internal |
| 16 | HG52370 | Arm, Bypass (LH) |
| | HG51910 | Arm, Bypass (RH) |
| 17 | HG51630 | Ring, Retaining, .375 External |
| 18 | HG51161 | Seal, Lip, 17 x 40 x 7 |
| 19 | HG72973 | Kit, Fan/Pulley |
| 20 | HG72320 | Kit, Hub Puller |
| 21 | HG50329 | Ring, Retaining Internal |
| 22 | HG50951 | Washer, Flat, 1.23 x 1.57 x .04 |
| 23 | HG73047 | Kit, Input Shaft |
| 24 | HG71569 | Kit, Shaft Axle |
| 25 | HG53656 | Bearing 25.4 x 52 x 15 Ball (6205R) |
| 26 | HG53514 | Washer, Flat, 1.355 x 2.035 x .021 |
| 27 | HG53699 | Seal, Lip, TC4, 1 x 2.06 x .38 |
| 28 | HG50859 | Ring, Retaining 2.25 Internal |
| 29 | HG71405 | Kit, Hub, 4 Bolt |
| 30 | HG53088 | Cap, Axle |
| 31 | HG53019 | Ring, Retaining External .438 |
| 32 | HG53973 | Handle, Actuating |
| 33 | HG71598 | Kit, RTN Bidirectional (LH) |
| | HG71595 | Kit, RTN Bidirectional (RH) |
| 34 | HG51605 | Spring, Extension |
| 35 | HG52114 | Filter, Spin-on 2.6 x 3 |
| 36 | HG44130 | Washer, Flat, .34 x .88 x .06 |
| 37 | HG51616 | Bolt, 5/16-24 x 7/8" (w/patch) |
| 38 | HG51946 | Arm, Return Left |
| | HG51945 | Arm, Neutral Right |
| 39 | HG54315 | Spacer, .32 ID x 1.005 OD x .1495 Thk |
| 40 | HG51140 | Seal, Lip, 18 x 32 x 7 |
| 41 | HG54501 | Tube, Charge Triple O-ring |

| Ref. No. | Part No. | Description |
|----------|----------|---|
| 42 | HG72274 | Kit, Charge |
| 43 | HG72291 | Kit, Gerotor Seal |
| 44 | HG71854 | Kit, Filter Guard (LH) |
| | HG73041 | Kit, Filter Guard (RH) |
| 45 | HG51048 | Swashplate, Trunnion |
| 46 | HG50551 | Bearing, Thrust 30 x 52 x 13 |
| 47 | HG70723 | Kit,Block 7 Piston |
| 48 | HG51462 | Bearing, Thrust 35 x 62 x 18 |
| 49 | HG72882 | Kit, 16cc Cylinder Block Assembly (steam treated) |
| 50 | HG71436 | Kit, Charge Relief |
| 51 | HG72515 | Kit, Center Section, LH Charge |
| | HG72516 | Kit, Center Section, RH Charge |
| 52 | HG52150 | Shaft, Motor |
| 53 | HG51069 | Washer, Flat, .71 x 1.16 x .04 |
| 54 | HG52109 | Gear, 14T |
| 55 | HG44145 | Retaining Ring, Motor Shaft |
| 56 | HG44371 | Washer, Flat, .63 x 1 x .05 |
| 57 | HG73119 | Kit, Outboard, RH Rot B / LH Rot A (LH) |
| | HG73118 | Kit, Outboard, RH Rot A / LH Rot B (RH) |
| 58 | HG73107 | Kit, Seal (ZT-2800) |
| 59 | HG54974 | Plug, 3/4-16 |
| 60 | HG55380 | Fitting 9/16 - 18, Breather |
| 61 | HG55072 | Expansion Tank, Internal LH |
| | HG55071 | Expansion Tank, Internal RH |
| * | HG50928 | Tube, Sealant |

* Item not shown

REPLACEMENT DECALS AND INFORMATION PLATES



IMPORTANT ADJUSTMENT PROCEDURES
READ OPERATORS MANUAL FOR MORE DETAILS

Check tire pressure - Drive tires-8 psi -
- Caster tires-25 psi

FREE WHEEL OPERATION
To move machine without running engine, pull both dump valve rods up and back (located at rear of machine) and latch. Pull rods forward and latch into front slot to operate mower.

NEUTRAL ADJUSTMENT

Control Lever
Linkage Capscrew

To re-set neutral, have engine off and control levers in neutral. Loosen upper linkage capscrew. Allow transmission to position linkage rod and tighten upper capscrew. Repeat for opposite side. If wheels still creep after adjustment, see an authorized Scag dealer.

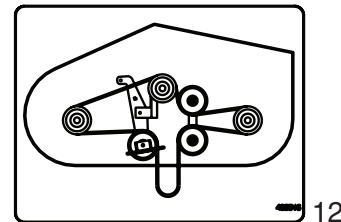
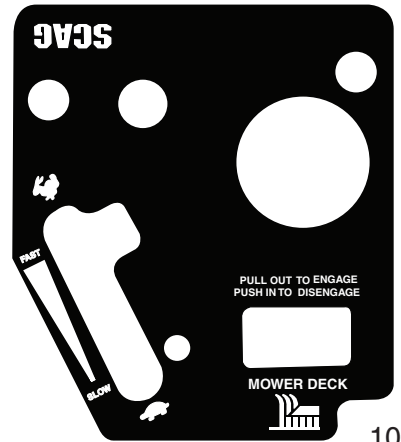
HYDRAULIC FLUID LEVEL
Check hydraulic fluid level while fluid is cool. Fluid level should be in sight window. Fill with 20W50 motor oil only.

IMPORTANT
Do not overfill. Room for hot fluid expansion must be allowed or resulting expansion may cause leaks in the system

TRACKING ADJUSTMENT

Control Lever
Stop Bolt

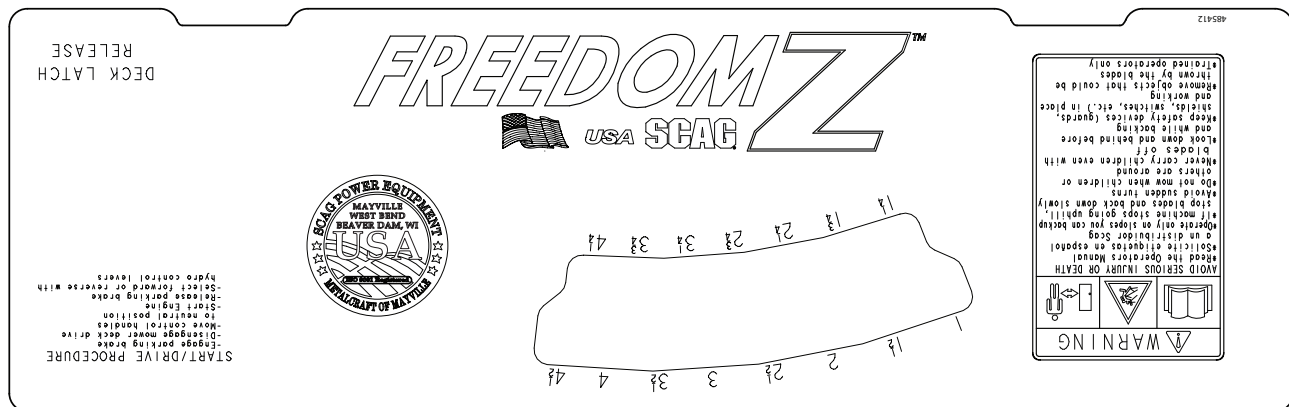
If machine pulls to right, adjust LH control stop bolt CW (inward) to slow left wheel down. Adjust RH control stop bolt CW (inward) to slow right wheel down.



ILLUSTRATED PARTS LIST

REPLACEMENT DECALS AND INFORMATION PLATES

| Ref. No. | Part No. | Description |
|----------|----------|---|
| 1 | 483402 | Decal, Belt Cover |
| 2 | 483405 | Decal, Warning |
| 3 | 486304 | Decal, ROPS |
| 4 | 483505 | Decal, Spinning Blades |
| 5 | 481568 | Decal, Traction Control |
| 6 | 483633 | Decal, Seat Replacement |
| 7 | 486794 | Decal, 48H Commercial |
| | 486795 | Decal, 52H Commercial |
| 8 | 483406 | Decal, Knives |
| 9 | 486846 | Decal, Adjustment SFZ |
| 10 | 483499 | Decal, Instrument Panel - SFZ48H & SFZ 52H |
| 11 | 486831 | Decal, Scag RH Fuel Tank |
| | 486830 | Decal, Scag LH Fuel Tank |
| 12 | 485516 | Decal, Belt Routing |
| 13 | 486313 | Decal, Cutting Height |
| 14 | 486308 | Decal, Freedom Z (Fuel Tank) |
| 15 | 486309 | Decal, Scag Freedom Z (Fuel Tank) |
| * | 483900 | Decal, Warning Spark Arrestor (California only) |
| * | 462155 | Spanish Decal Kit - SFZ (not shown) |
| * | 01411 | DVD Video, Tips for Safe Operation of Your Scag Zero-Turn Mower (not shown) |



13

14

15

ELECTRICAL SCHEMATIC

