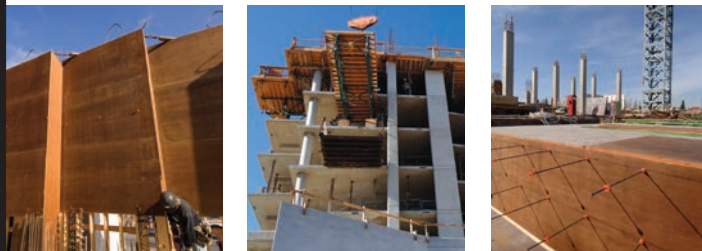


POURFORM-107®

Pourform-107—REPEAT POURFORMance



Pourform-107 concrete-forming panels have earned a 40-year reputation as the world's most dependable and popular high-quality MDO panel. Engineered for exceptional strength and reusability. Manufactured under quality assurance by APA — The Engineered Wood Association to meet PS 1 requirements, the Struc 1 panel outlasts all competitive MDO products reuse after reuse. When the job demands quality and cost-efficient performance, Pourform-107 delivers. Anything less costs you more.



Superior Overlay for Durability and Finish

Pourform-107 is overlaid on the panel face with a unique, olive green-colored phenolic resin-impregnated overlay (with the highest percentage of free-flow resins of any MDO panel available). The overlay is bonded to the panel face under high heat and pressure. This forms a hard, durable surface that resists abrasion and moisture and makes the panel easy to strip from concrete surfaces. This overlay also protects the wood substrate from the rigors of site construction, including exposure to water and alkali solutions. Pourform-107 panels produce a non-architectural matte concrete finish uniform in color, with moderate grain/patch transfer.

Engineered For Long Serviceability

Pourform-107 should give from 10–15 reuses. This will vary according to application, service conditions, form maintenance and handling, and form release quality (N.B. see Form-Release Agent on other side of this sheet).

Pourform Plus Series available with dense hardwood faces:

- Exceptionally smooth concrete surfaces
- No patch and Minimal Grain Transfer
- Improved resistance to alkalinity, water, abrasion and wear
- Dramatically increased reuse performance with consistent results
- Pourform-107 Plus 20–25 or even more reuses
- Lower lifetime panel costs

Constructed and Edge-sealed for Extra Strength

Exceptionally strong, rigid and dimensionally stable. Pourform-107 is manufactured to meet or exceed the design characteristics of a Struc 1 Panel. This ensures that the panels meet or exceed the engineering properties listed on back. The panels are bonded with a fully waterproof phenolic resin system to meet the bond requirements of PS 1.

Pourform-107 Plus is an APA Certified Custom Product manufactured with a dense hardwood face. The structural properties of the dense hardwood faces meet or exceed the requirements of PS 1 Table 1, Group 1 species. These panels meet or exceed the structural requirements of PS 1-09, Table 1, group 1 species.

Edges are sealed with Savona's distinctive Orange edge seal, (Nox-Crete Edge Flex 645) designed to work in a highly alkaline, wet environment. Cut or exposed edges should be resealed to prevent moisture absorption and panel swelling.

POURFORM-107®

Pourform—More pours per panel

Form Maintenance

Use wood wedges, tapping gradually when stripping forms. Metal pry bars should not be used as they will damage the panel surface and edges. Forms should be cleaned immediately after stripping. Concrete buildup should be removed using a wooden or plastic scraper, stiff fiber brush or burlap sack. Projecting nails should be withdrawn to prevent scarring of the panels when stacked. Panels should be stacked flat, face to face and out of the sun to prevent surface checking and cupping.

For further details, ask your dealer for a copy of the Pourform Care and Handling pamphlet or go to our website www.savonapourform.com and click **Products**.

Form-Release Agent

Pourform-107 panels are factory treated with a chemically active release agent. It is recommended that each panel also be coated lightly with a quality chemically active release

agent (Nox Crete® or equivalent) prior to the first and with each subsequent use. **Do not** use form-release agents that contain diesel fuel, mineral spirits or motor oil as these may soften and eventually degrade both the overlay and the panel itself. Using such agents will reduce or void the warranty.



Formwork Design

Pourform-107 is constructed with the grain direction of the face and back veneers running parallel to the long edges of the panel. Panels should therefore always be applied perpendicular to supports to minimize deflection.

Engineering Data

Pourform-107 concrete-forming panels are manufactured under quality assurance by APA—The Engineered Wood Association to meet or exceed PS 1 requirements. Engineering data are provided in the following tables.

STRESS TABLE

NOMINAL THICKNESS: (in)	ALLOWABLE OR WORKING STRESS DESIGN CAPACITIES					
	FACE GRAIN ACROSS SUPPORTS			FACE GRAIN ALONG SUPPORTS		
	5/8"	11/16"	3/4"	5/8"	11/16"	3/4"
BENDING RESISTANCE: M or F _b S (lb-in/ft)	974	1,266	1,444	597	859	868
BENDING STIFFNESS: EI* (lb-in ² /ft)	263,966	391,327	478,780	90,278	168,009	172,185
PLANAR SHEAR CAPACITY: V or F _v lb/Q (lb/ft)	586	577	605	316	468	470

* Increases EI 10% when bending and shear deflection are calculated separately (see Plywood Design Specification, APA Form Y510) | Wet stresses | 1.25 DOL for M and V included.

LOAD TABLE: (LBS PSF)

SPAN (INCHES)	FACE GRAIN ACROSS SUPPORTS						FACE GRAIN ALONG SUPPORTS					
	5/8"		11/16"		3/4"		5/8"		11/16"		3/4"	
	L/270	L/360	L/270	L/360	L/270	L/360	L/270	L/360	L/270	L/360	L/270	L/360
4	4,685	4,685	4,616	4,616	4,843	4,843	2,531	2,531	3,746	3,746	3,760	3,760
6	2,603	2,603	2,565	2,565	2,691	2,691	1,406	1,406	2,081	2,081	2,089	2,089
8	1,802	1,802	1,776	1,776	1,863	1,863	974	974	1,441	1,441	1,446	1,446
12	812	797	1,055	1,055	1,153	1,153	446	334	716	594	723	580
16	457	362	594	510	677	593	187	140	339	254	337	253
19.2	286	214	408	306	470	361	133	100	224	181	226	181
24	148	111	214	161	255	192	67	51	123	93	124	93
28	93	70	136	102	163	122						
32	62	47	91	68	110	83						

Assumes three spans, wet stresses and 1.25 DOL for strength. | Net support width = 1-1/2 in

Panel Specifications

Standard sizes are 4' x 8'9" or 10' x 5/8", 11/16", 3/4" thick. Other thicknesses and dimensions are available on special order.

NOMINAL THICKNESS (IN.)	# OF PLYS	THICKNESS TOLERANCES	LBS PER SQ FT	PANELS PER PKG
5/8"	5	± 1/32"	1.7	55
11/16"	7	± 1/32"	1.9	50
3/4"	7	± 1/32"	2.1	46



For more information, please contact:

Savona Specialty Plywood
 7273 Kamloops Lake Drive, PO Box 127
 Savona, BC V0K 2J0
 Phone: 250-373-5600
 Fax: 250-373-5665
 Email: pourform@apgroup.ca
 Web: www.savonapourform.com

Pourform® Pourform MDO® Pourform-101® Pourform-107® Pourform HDO® Pourform pH® and the color Orange® are registered trademarks of Savona Specialty Plywood Co. Ltd. Nox-Crete is a registered trademark of Nox-Crete Nebraska Ltd.