



# READ BEFORE USE

If you have any questions,  
email us or give us a call!

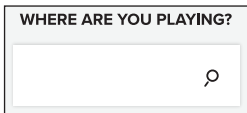
☎ (888) 568-6770

✉ [help@precisionprogolf.com](mailto:help@precisionprogolf.com)

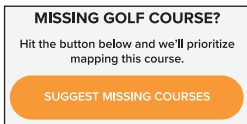
## COURSE ISSUES

In Precision Pro App

1. Tap the course search bar

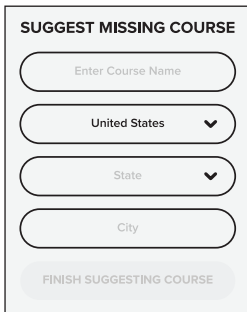


2. Scroll to the bottom and tap  
“Suggest Missing Courses”



Is your course **missing**, or having **mapping issues**? Let us know, courses are typically added/fixed in 2 weeks or less.

3. Enter missing course information

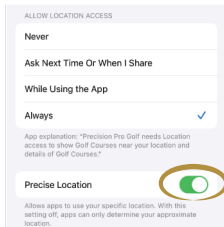
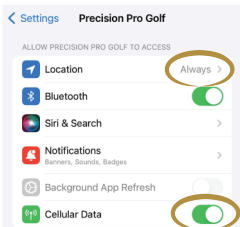


\*Courses can also be added via the “SUPPORT” tab on [precisionprogolf.com](http://precisionprogolf.com)\*

## CHECK YOUR PHONE SETTINGS

### iPhone

1. Settings > Precision Pro Golf > Set “Location” to “Always” and turn “Precise Location” on.
2. Settings > Precision Pro Golf > Turn “Background App Refresh” on.
3. Settings > Precision Pro Golf > Turn “Cellular Data” on.

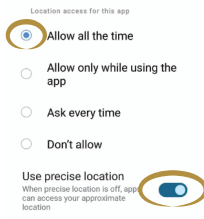


For best use of Find My Precision Pro - Settings > Precision Pro Golf > Turn “Notificaitons” on.

# Android

- Settings > Apps > Precision Pro Golf > Permissions > Set “Location” to “Allow all the time” and turn “Precise Location” on.

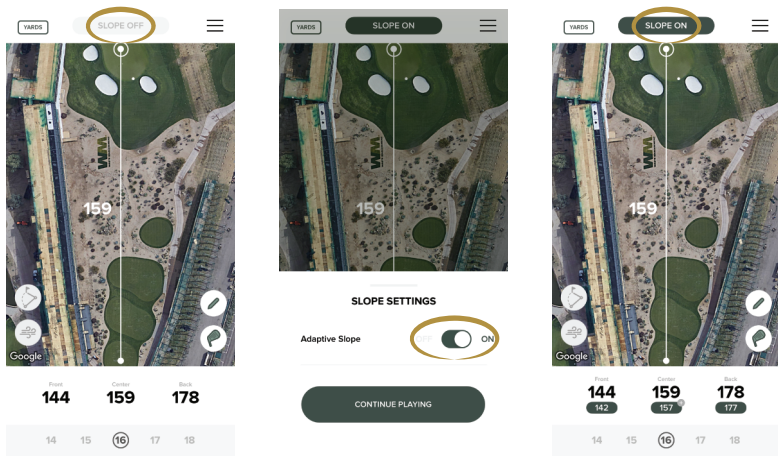
For best use of Find My Precision Pro - Settings > Apps > Precision Pro Golf > Turn “Notificaitons” on.



## AUDIBLE YARDAGE READOUTS

Audible yardages can be given in either slope or non slope distances.

Toggle slope on/off by tapping the slope button at the top of the app once you have started your round.



**SCAN TO ACCESS  
KNOWLEDGE BASE  
[USE PHONE CAMERA]**



☎ (888) 568-6770  
🌐 [precisionprogolf.com/help](https://precisionprogolf.com/help)  
✉ [help@precisionprogolf.com](mailto:help@precisionprogolf.com)

## CONNECTING YOUR DUO

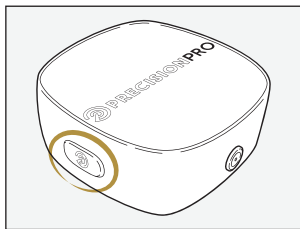
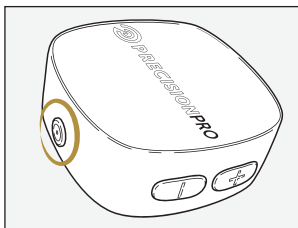
- Download the Precision Pro Golf App from the Apple App Store or Google Play.
- Press the power button to turn on your Duo.
- Open the Precision Pro Golf app, click on Duo, and follow the pairing instructions.



## DUO BUTTON FUNCTIONS

### Power Button

- Hold for 2 seconds to turn on.
- Click to play/pause your music.
- Hold for 3 seconds to power off.

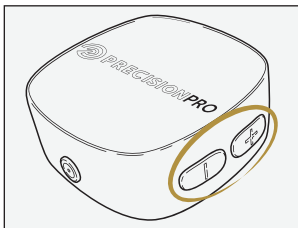


### Golf Button

- Single press = Front, center, & back yardages
- Double press = Slope adjustment
- 3 second hold = Personal layouts

### Volume Buttons

- Single press of + = Volume up
- Single press of - = Volume down
- 3 second hold of + = Skip track
- 3 second hold of - = Previous track



# LIGHT INDICATORS

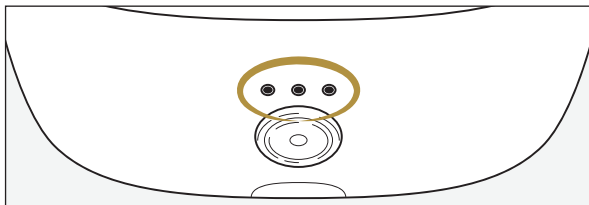
- All lights flash while searching for a Bluetooth connection.
- When a connection has been established, lights will remain solid for 2 seconds.

## Once connected:

- 3 lights = battery over 75%
- 2 lights = battery between 40%-75%
- 1 light = battery between 10%-40%
- 1 light flashing = battery under 10%

## When charging:

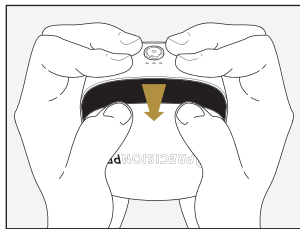
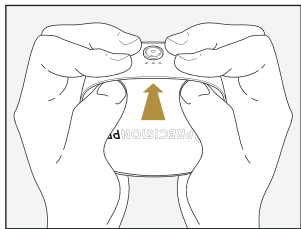
- 3 lights flashing = battery below 10%
- 1 solid 2 flashing = battery between 10%-50%
- 2 solid 1 flashing = battery between 50%-95%
- 3 lights solid = battery fully charged



# CUSTOMIZATION

## Changing your DUO grill

- Press your thumbs into the bottom edge of the grill until the top of it pops up.
- Slide the grill off the speaker & place new grill on the same way.



## Snap on case

- Press the case onto the DUO until the front rim snaps over the edge.
- This case comes with an integrated carabiner loop to attach to your golf bag.

