

# FCC STATEMENT



This device complies with Part 15 of the FCC Rules. Operation is subject to the following two criteria: (1) This device may not cause harmful interference, and (2) This device must accept any interference received, including interference that may cause undesired operation.

Warning: Changes or modifications to this unit not expressly approved by the party responsible for compliance could void the user's authority to operate the equipment.

Note: This equipment has been tested and found to comply with the limits for a Class B digital device, pursuant to Part 15 of the FCC Rules. These limits are designed to provide reasonable protection against harmful interference in a residential installation. This equipment generates, uses and can radiate radio frequency energy and, if not installed and used in accordance with the instructions, may cause harmful interference to radio communications.

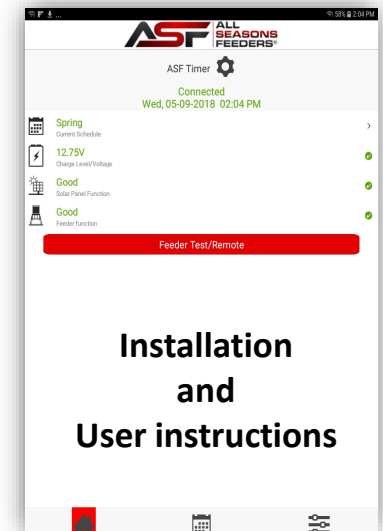
However, there is no guarantee that interference will not occur in a particular installation. If this equipment does cause harmful interference to radio or television reception, which can be determined by turning the equipment off and on, the user is encouraged to try to correct the interference by one or more of the following measures:

- Reorient or relocate the receiving antenna.
- Increase the separation between the equipment and receiver.
- Connect the equipment into an outlet on a circuit different from that to which the receiver is connected.
- Consult the dealer or an experienced radio/TV technician for help.

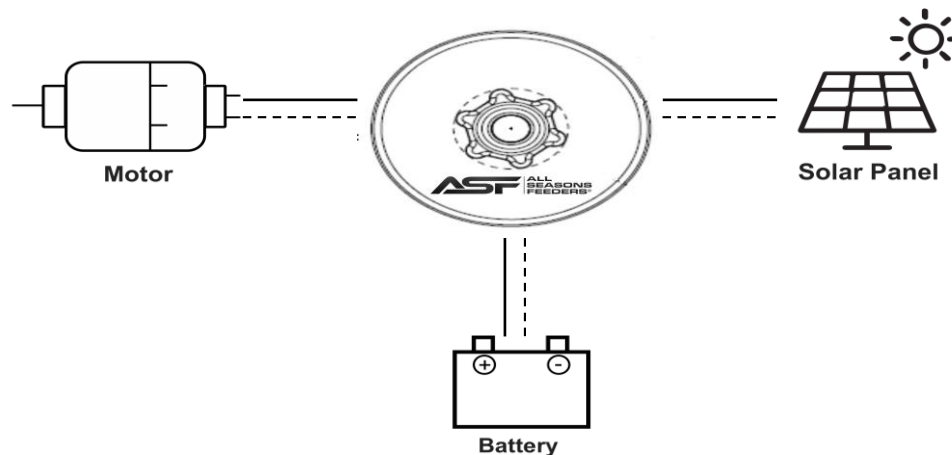
## FeedSync Timer



## FeedSync Timer



## Wiring Diagram



# TIMER INSTALLATION INSTRUCTIONS



## Start

- **If using the All Seasons Feeders brand control box:** Using a screw driver and hammer, knock out the plug located on the bottom center of the motor control box
- **For all other control boxes and custom installations:**
  1. Identify the install location (make sure you have good visibility to the antenna from your hunting blind / stand for best results)
  2. Using a 9/16" drill bit, drill a hole into the control box.
  3. Follow steps 2 – 10 below



## Connect Antenna

1. Remove the LARGE nut on the antenna side of the FeedSync Timer and insert it through the hole from inside the control box.
2. Re-install the LARGE nut to secure the FeedSync Timer to the inside bottom of the control box.
3. Install the antenna onto the FeedSync Timer



## Connect Wires

1. Connect the FeedSync Timer + - wires (red / black) to the battery
2. Connect your solar panel + - wires to the FeedSync Timer lead wires (labeled solar panel + -)
3. Connect your motor + - to the FeedSync Timer lead wires (labeled motor + -)



## Test

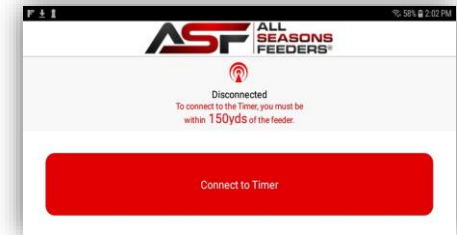
- **To set up your FeedSync Timer and test, refer to the Set-up Instructions**

# APP INSTALL INSTRUCTIONS

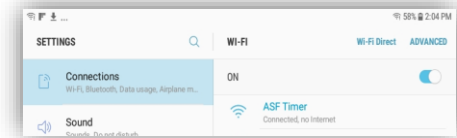
**ATTENTION!** Download the FeedSync Timer app prior to installation in the field / while you have access to the internet.



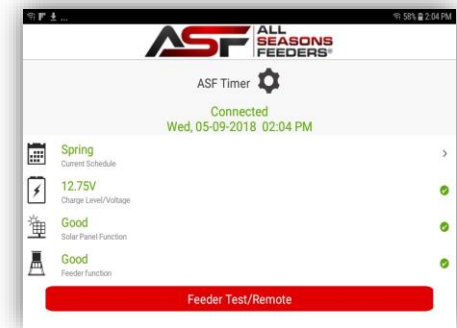
1. Open the app and click **Connect to Timer**



2. Select the **FeedSync Timer** and connect

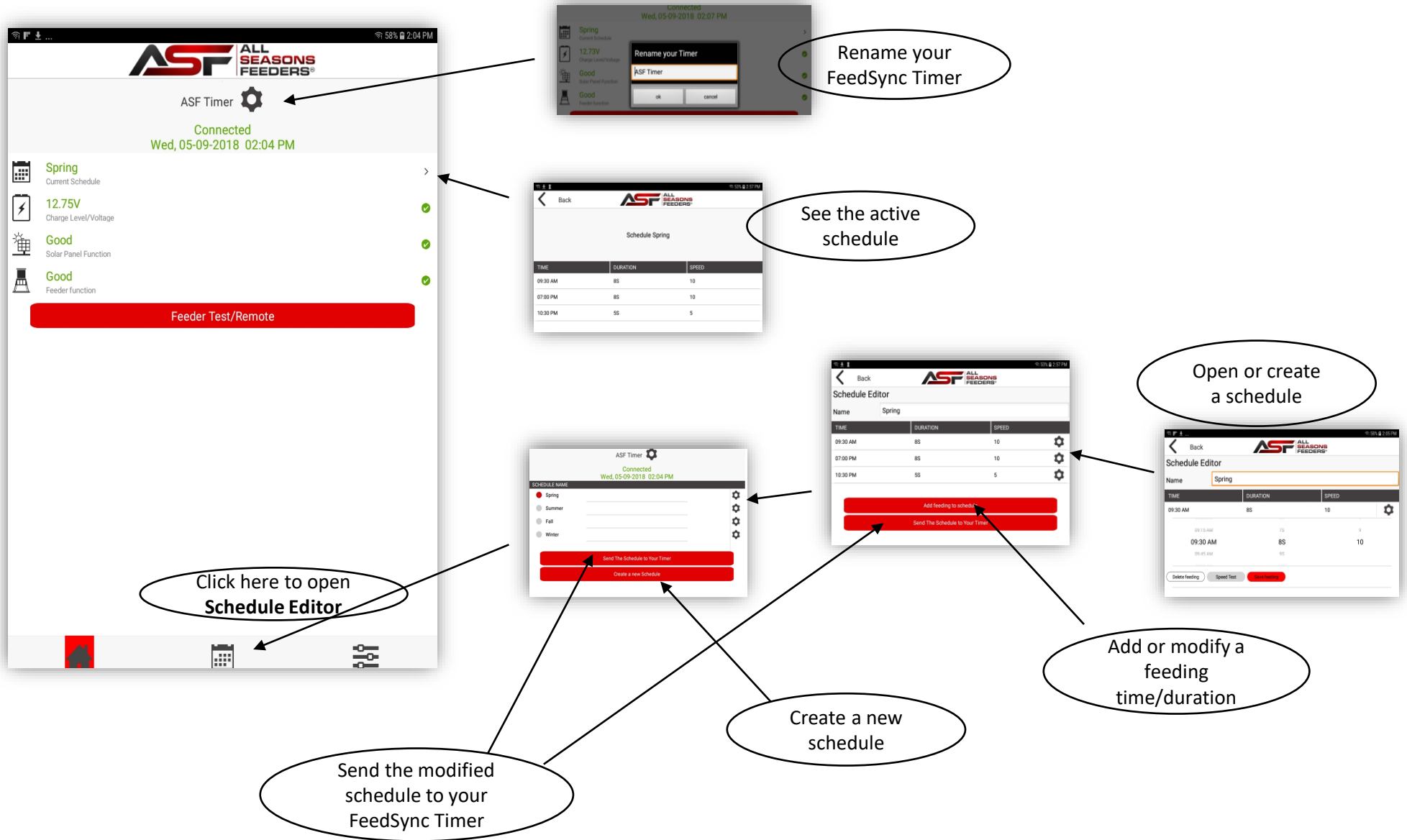


3. You're Connected!  
Click **TEST** button to activate the FeedSync Timer



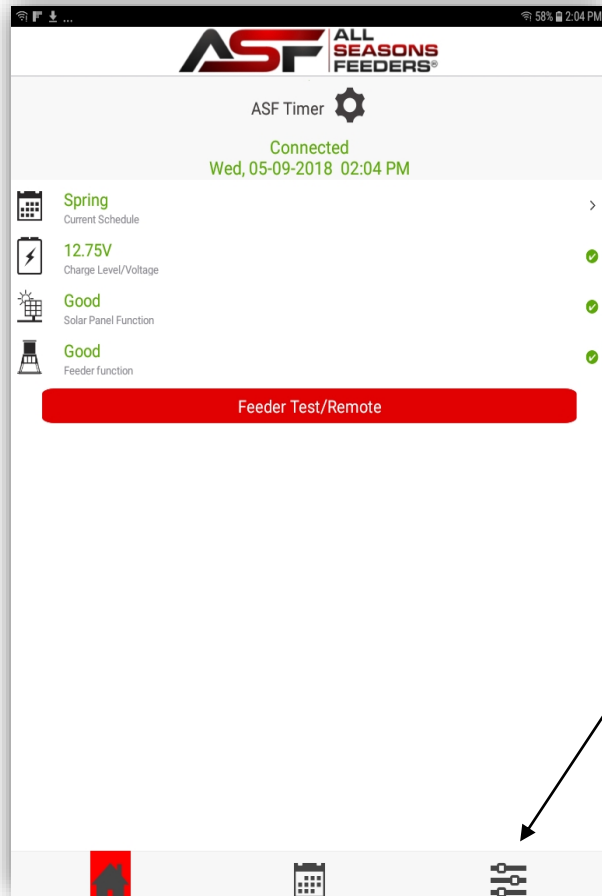
# APP USER GUIDE

## Schedule Editor / Changing FeedSync Timer Name

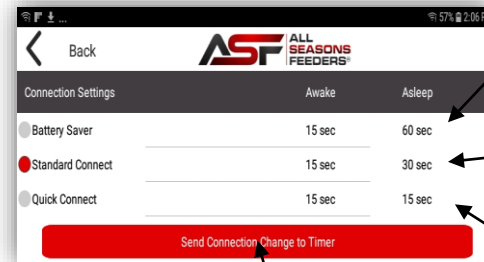
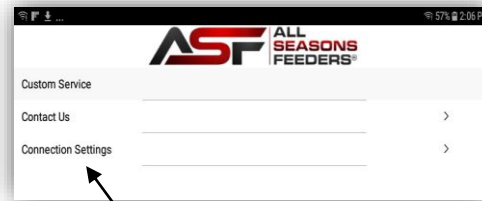


# APP USER GUIDE

## Connection Editor



Click here to open  
**Connection  
Settings**



Send the modified  
connection setting to  
your FeedSync Timer

**Battery Saver** – Your FeedSync Timer will automatically switch to this setting if your battery voltage drops below 12v

**Default Connect**– Your FeedSync Timer is preset to this default for optimum battery consumption / charging efficiency

**Quick Connect**– This setting will provide for quicker connection to the FeedSync Timer however, this may also affect battery charging.